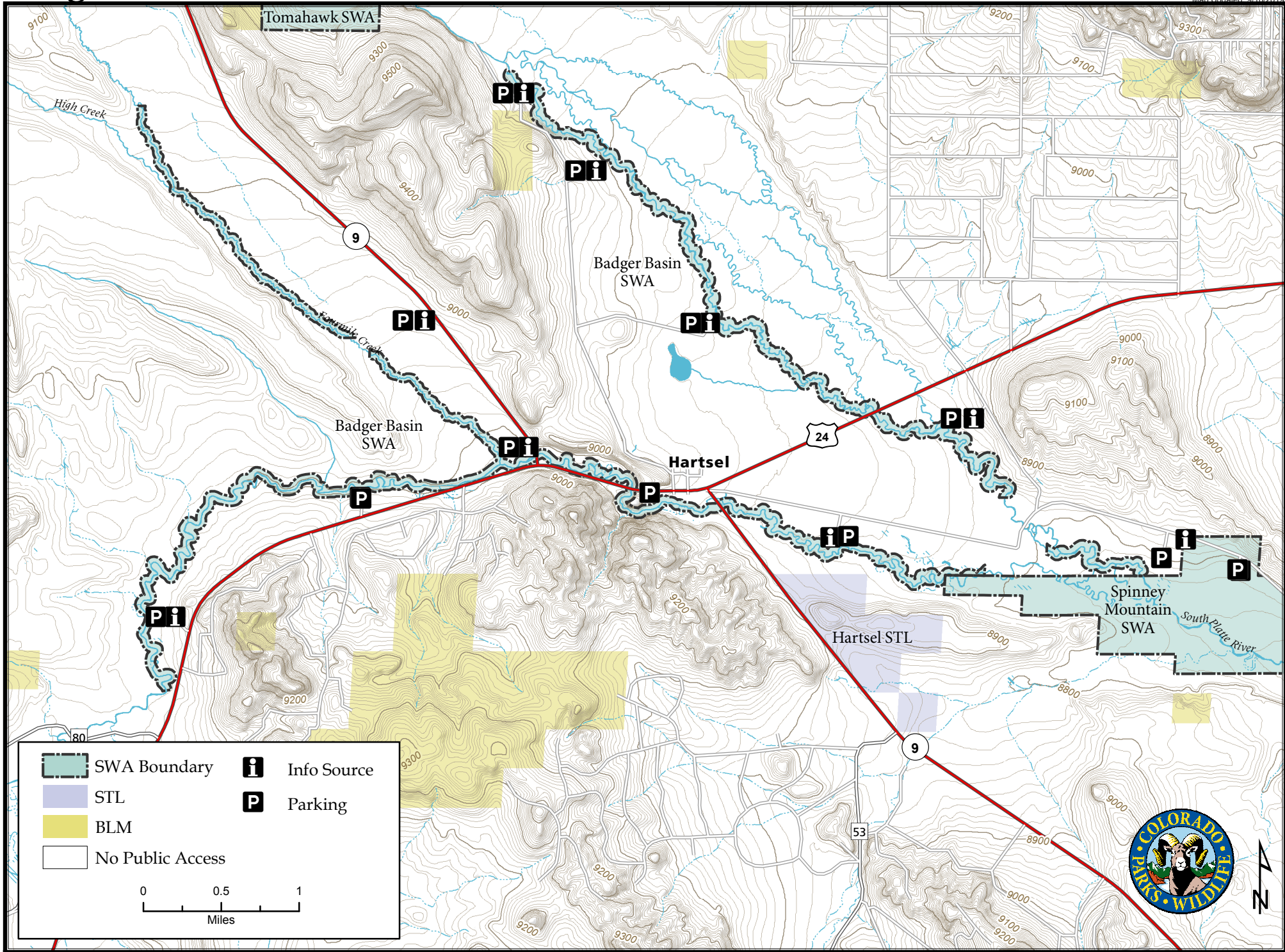
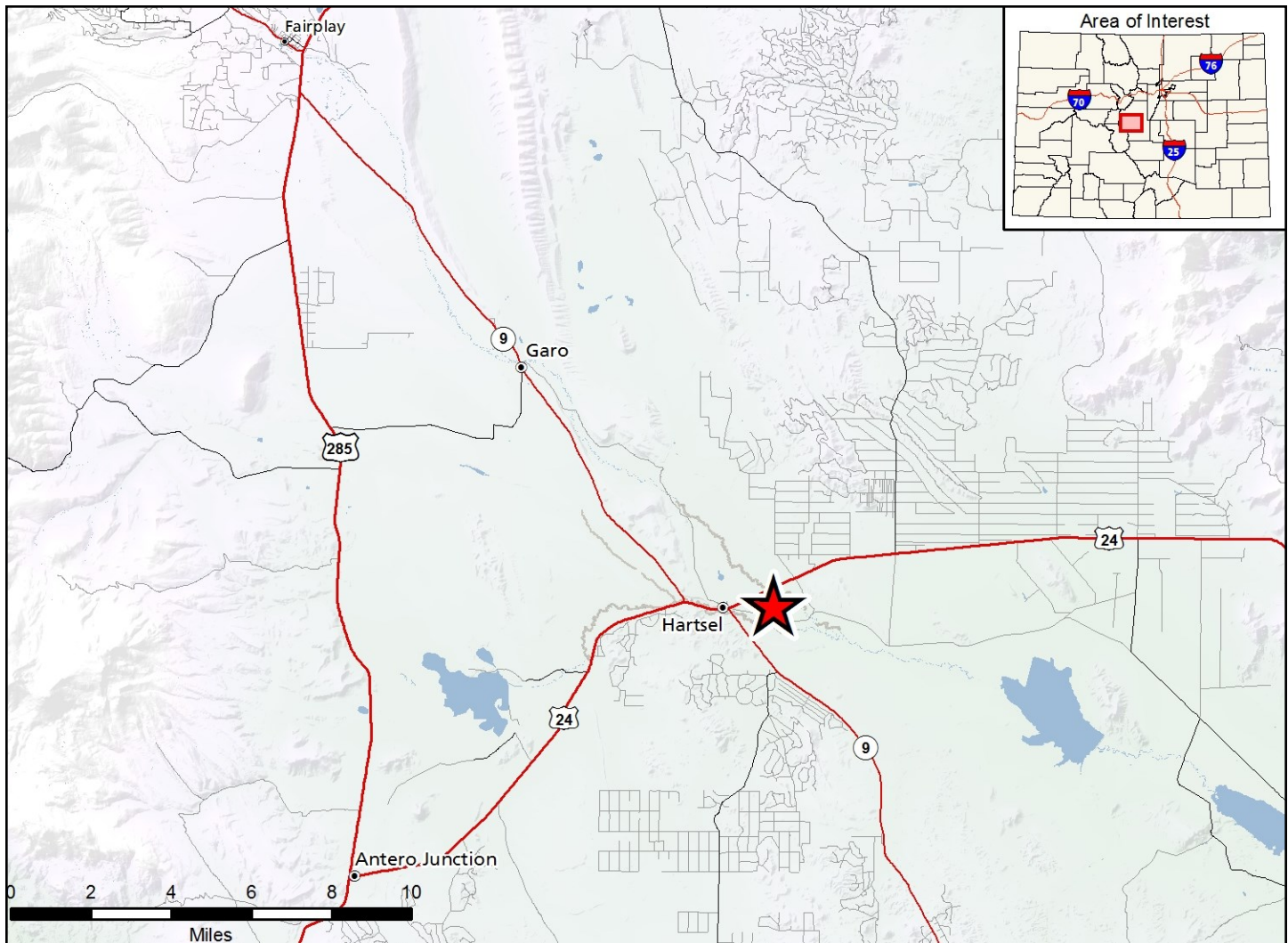


# Badger Basin State Wildlife Area

Map Updated: 9/10/2019







### Badger Basin SWA - Park County

From Hartsel go East and West along Hwy. 24. Land is directly North of Hartsel and North and South along Hwy. 9

#### Wildlife Area Offers:

Fishing: Coldwater Stream  
Recreation: Wildlife Viewing

#### Regulations:

In addition to or in place of those restrictions listed in regulation #900 the below listed provisions or restrictions apply (see Ch. 9, <http://cpw.state.co.us/aboutus/Pages/Regulations.aspx>).

- A. Public access is prohibited, except while fishing.
- B. Public access is allowed within the fenced and posted easement only.
- C. Parking and access is allowed from designated parking areas only.
- D. Hunting is prohibited

#### More Information:

CPW NE Regional Office (Denver): (303) 291- 7227

Website: <https://cpw.state.co.us/>