

# **Staunton State Park Draft Park Management Plan Commission Meeting - June 2025**



LIVE LIFE  
OUTSIDE



01

Overview of Management Plan and Process

02

Key Elements of the Management Plan

03

Public Input Process

04

Questions



LIVE LIFE  
OUTSIDE

# Park Management Plans

- 10-year plan that serves as an overarching management guide for the park
- Outlines short- and long-term visions for the park related to:
  - visitor experiences
  - recreation
  - natural and cultural resources
  - interpretation and education
  - infrastructure and facilities

## EXECUTIVE SUMMARY

The Executive Summary provides a brief overview of the park's issues, metrics deemed important (Location pages).

**About**  
Briefly manage park-level implementation documents.

**Park**  
Provide essential information of goals.

**Manag**  
Broadly describe the overall vision.

**At**  
of...

**Summ**  
Please provide a brief overview of the park's management plan.

## Park Description

Provide a brief description of the park, including its location, size, and natural and cultural resources.

## Purpose of Plan

Discuss the purpose of the plan and its relationship to the park's management plan.

**Sample text:** This plan serves as a guiding document for the park's management and provides a framework for the park's future development.

**Manag**  
Broadly describe the overall vision.

**Manag**  
Broadly describe the overall vision.

**At**  
of...

**Summ**  
Please provide a brief overview of the park's management plan.

## 1.0 INTRODUCTION

The intent of this section is to provide some brief background/context on the regional setting in which the park is located.

**Sample Text:** This section provides detailed information on the existing conditions within the park.

## 2.0 REGIONAL PLANNING CONTEXT

This section provides detailed information on the existing conditions within the park.

**Methodology for Determining Management Zones**  
After a thorough description of existing conditions has been completed, the necessary information management zones are identified and referred to in Section 4.0.

**Sample Text:** This and various ongoing trends that affect the park's management and development.

**Physical Setting**  
Provide some information on the park's physical characteristics.

**Eco-Region**  
Feel free to provide information on the park's ecological region.

**Adjacent Land**  
Provide a brief description of the land adjacent to the park.

**Regional Resources**  
Provide a brief description of the regional resources.

## 3.0 PARK SETTING & RESOURCES

This section provides detailed information on the existing conditions within the park.

**4.0 MANAGEMENT ZONES**  
**Methodology for Determining Management Zones**  
After a thorough description of existing conditions has been completed, the necessary information management zones are identified and referred to in Section 4.0.

## 5.0 PARK ENHANCEMENT OPPORTUNITIES & INITIATIVES

This section provides an opportunity for the park management planning team to highlight specific park enhancement opportunities as well as any management initiatives that will help meet park goals.

**6.0 IMPLEMENTATION PRIORITIES**  
This section is another one of the more important sections in the document. Keep in mind the park goals, Strategic Plan Goals & Objectives, and issues identified in Sections 1, 2, 3, and 4 develop park-specific management actions that serve as "implementation priorities." Various management actions should correspond to the resource headings outlined and discussed in Section 3. Park enhancement opportunities are included in this section, along with all other suggested management actions.

**Sample Text:** This section highlights management actions that have been established by the Planning Team to help identify management needs and priorities, effectively plan future park development, and help protect and maintain the park's unique resources.

**Table X**, provided on the following page, is intended to serve as a quick reference for the park manager and staff responsible for implementing this plan. Included in Table X is a breakdown of each management action, the "category," or type of management action, applicable management zone, and priority level. Criteria for determining priority levels are as follows:

**High priority recommendations** are considered extremely important to maintaining the quality of recreation and protecting natural resources in the park. These actions are central to the preserving, maintaining, and enhancing the resources at the park.

**Medium priority recommendations** are considered important, but not urgent, and meet a combination of other resource goals and objectives.

**Low priority recommendations** are considered important, but not critical. Low priority recommendations do not have to be completed in the immediate future.

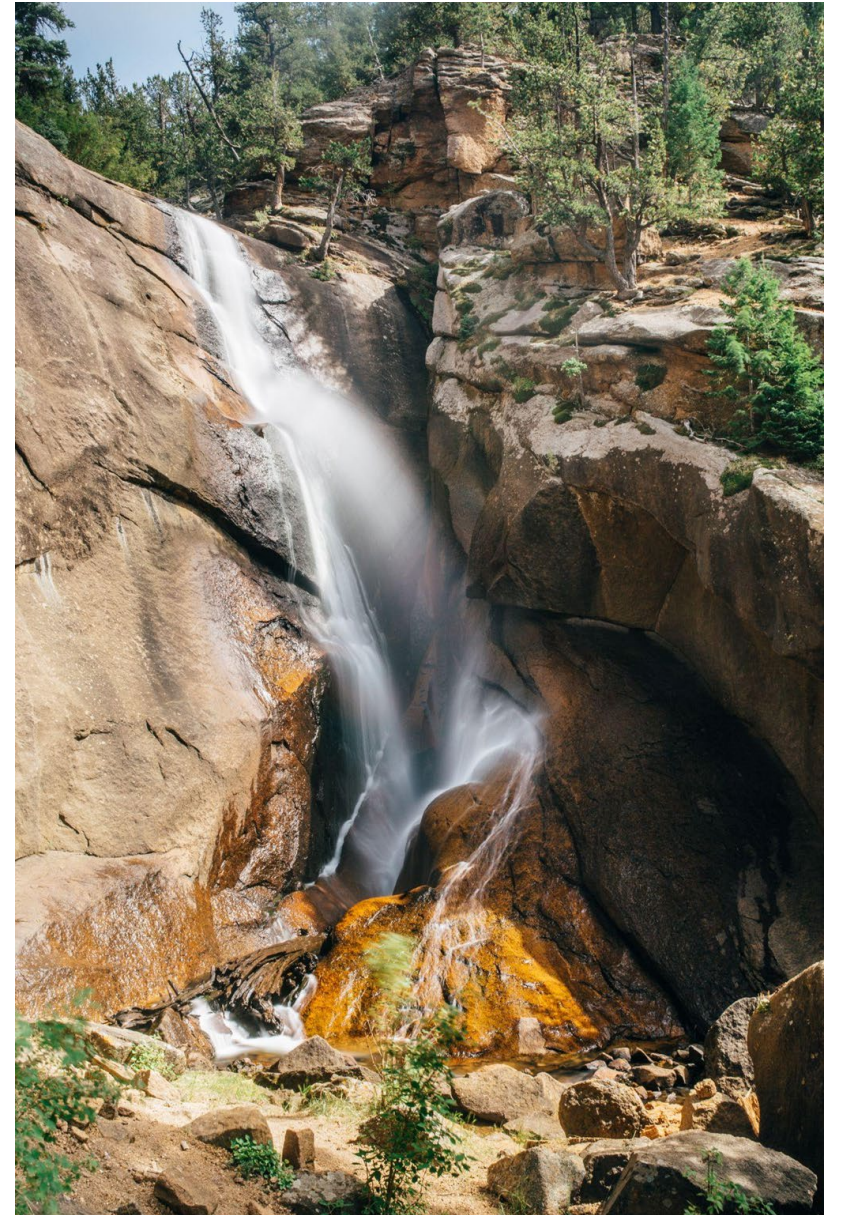
**Implementation Considerations**  
Mention, among other things, that effective implementation is contingent on the maintaining adequate financial and human resources necessary to initiate and follow through with recommendations outlined in this section. Identify any other implementation considerations.



# Park Management Plans

Inputs include:

- Park Master Plan - Park Development
- Resource Stewardship Plan
- Park Forestry Plan
- Public Scoping Feedback
- Volunteer Open House
- Internal CPW Discussions and Feedback
- Public Feedback on the Draft Plan





01

Overview of Management Plan and Process

02

Key Elements of the Management Plan

03

Public Input Process

04

Questions



LIVE LIFE  
OUTSIDE

# Staunton State Park

Staunton State Park offers diverse landscapes, ranging from grassy meadows at 8,100 feet to granite cliffs over 10,000 feet, supporting unique plant communities and a wide array of wildlife.



# Park Purpose

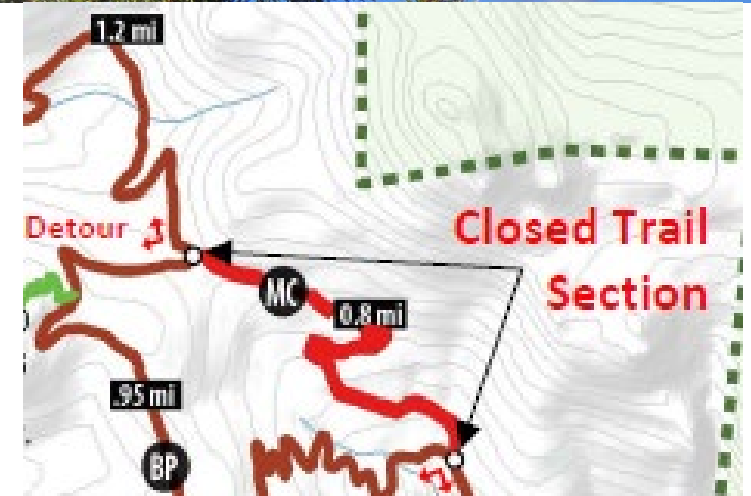
Staunton State Park was established to:

- Preserve the rich natural and cultural resources of the original Staunton family lands, Staunton family homestead, and additional lands for the enjoyment and education of current and future generations;
- Provide a backcountry / wilderness style recreation opportunity with additional, limited modern amenities to facilitate visitation; and
- Protect wildlife habitats and migratory corridors.

## SEASONAL TRAIL CLOSURE



This section of the Mason Creek trail is temporarily closed to protect a pair of nesting goshawks. The presence of people or pets can cause the adults to abandon the nest and eggs or disrupt feeding of nestlings by their parents, decreasing the nestlings' chances of survival.



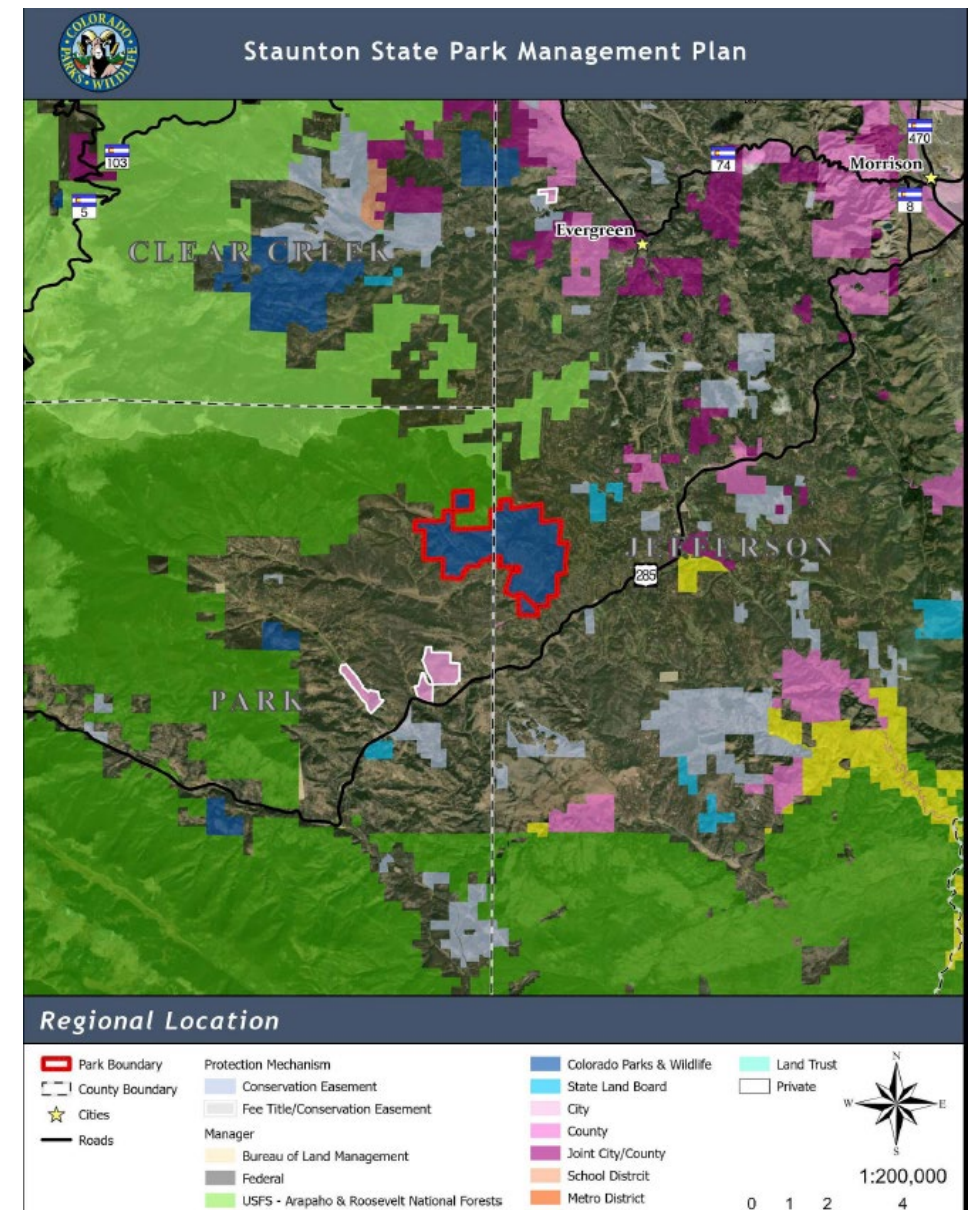
# Park Goals

- Protect and maintain the park's natural and scenic resources to support natural habitat integrity and connectivity and to provide opportunities for nature based recreation.
- Honor, protect, and preserve the park's cultural and historical resources and their interpretation.
- Provide a variety of outdoor recreation opportunities that fit the park's setting while minimizing impacts to natural and cultural resources
- Maintain partnerships with other land management agencies and community groups.
- Provide volunteer opportunities and environmental education and interpretive programming.



# Regional Planning Context

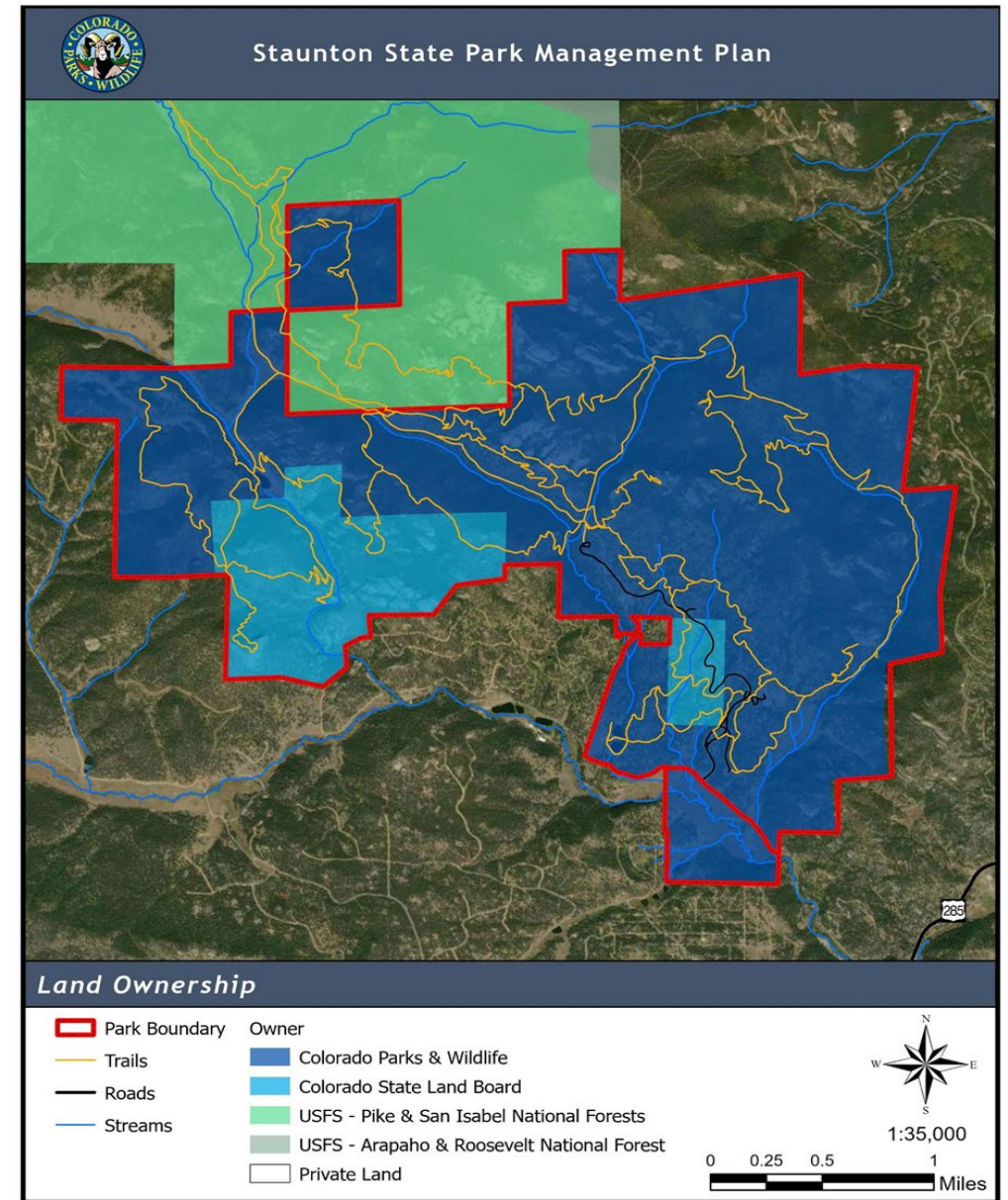
- Physical Setting
- Eco-Regional Setting
- Climate
- Adjacent Land Use and Land Ownership
- Colorado and Regional Population Trends
- Regional Recreation and Tourism Trends, Needs, and Opportunities



# Adjacent Land Use and Ownership

Staunton State Park is bordered by:

- NW - USFS - Pike/San Isabel National Forest
- NE - Conifer Mountain Subdivision
- S - Elk Falls, Woodside and Mountain View Lakes subdivision
- W - Hidden Valley Ranchettes



# Colorado & Regional Population Trends

- Jefferson County - growing population - estimated to increase to approximately nearly 600K by 2030.
- 59% of Jefferson County's population is aged 44 and younger
- The increasing population of Jefferson county and the young age group drives an increase in outdoor recreation activities along the front range.



# Regional Recreation & Tourism Trends, Needs & Opportunities.

- There are numerous outdoor recreational opportunities for residents and visitors within the region and immediate area.
- In 2023, the front range region contributed the largest amount of outdoor recreation spending at \$29.6 billion.

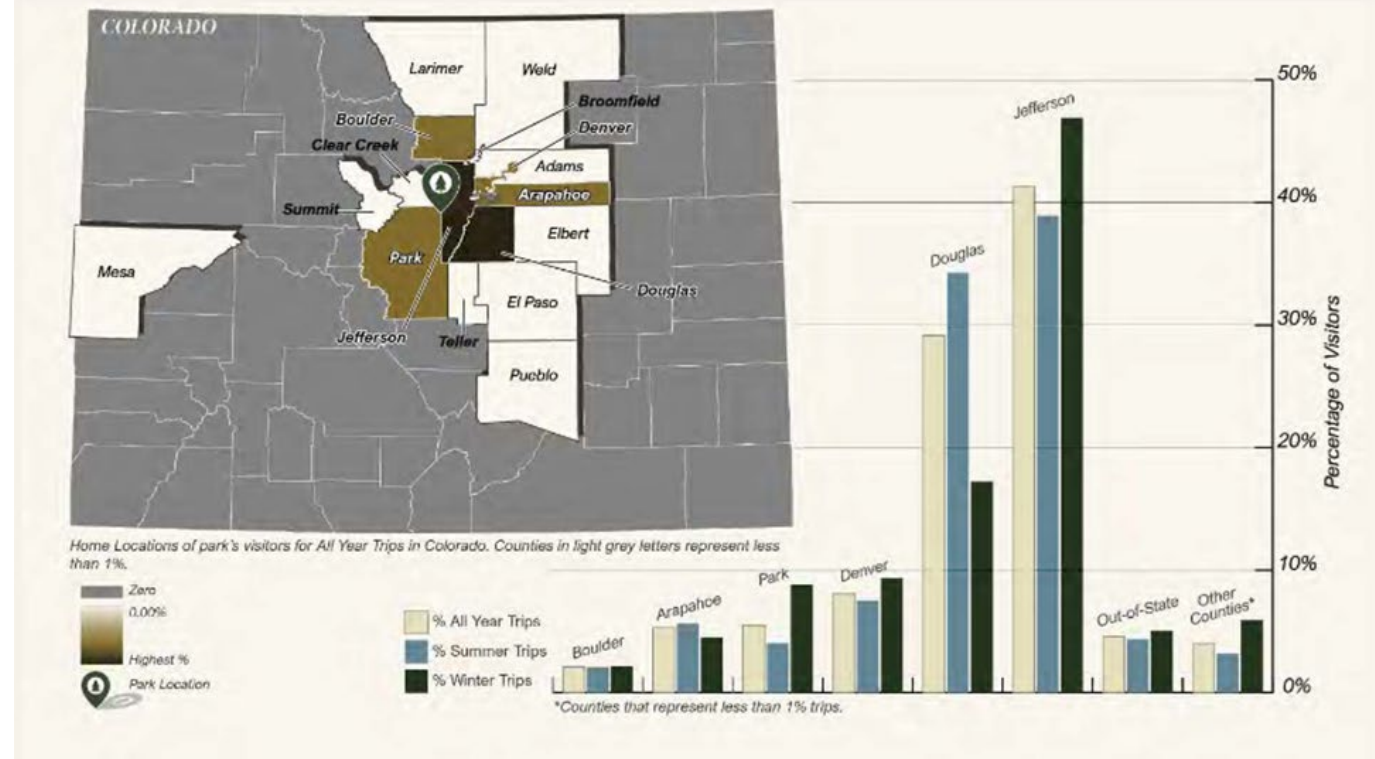


# Park Setting and Resources

## Visitation

- Annual visitation is approximately 300,000.
- The park sees its busiest months from May through October.
- Most park visitors are residents of Jefferson and Douglas counties.

Staunton State Park Visitor Residency



# Park Setting and Resources

## Recreational Resources

Recreational opportunities include:

- Hiking, including Track chairs
- Biking
- Horseback riding
- Picnicking
- Sightseeing
- Photography
- Ranger / nature programs
- Rock climbing
- Wildlife and bird viewing



# Park Setting and Resources

## Education and Interpretation

Interpretation, education are high priorities to the park to help connect visitors and help them have a greater understanding of the park. A few opportunities include:

- Marmot Fest
- Living History Days
- Adaptive Rec day
- Halloween - Hike or Treat



# Park Setting and Resources

## Cultural Resources

A portion of the park was officially included on the National Register of Historic Places as a Rural Historic Landscape in 2012, containing 31 contributing resources. There are also eight structures listed on the National Historic Registry which include:

- The Staunton Cabin
- The Brola Cabin
- The Old Mill Bunkhouse

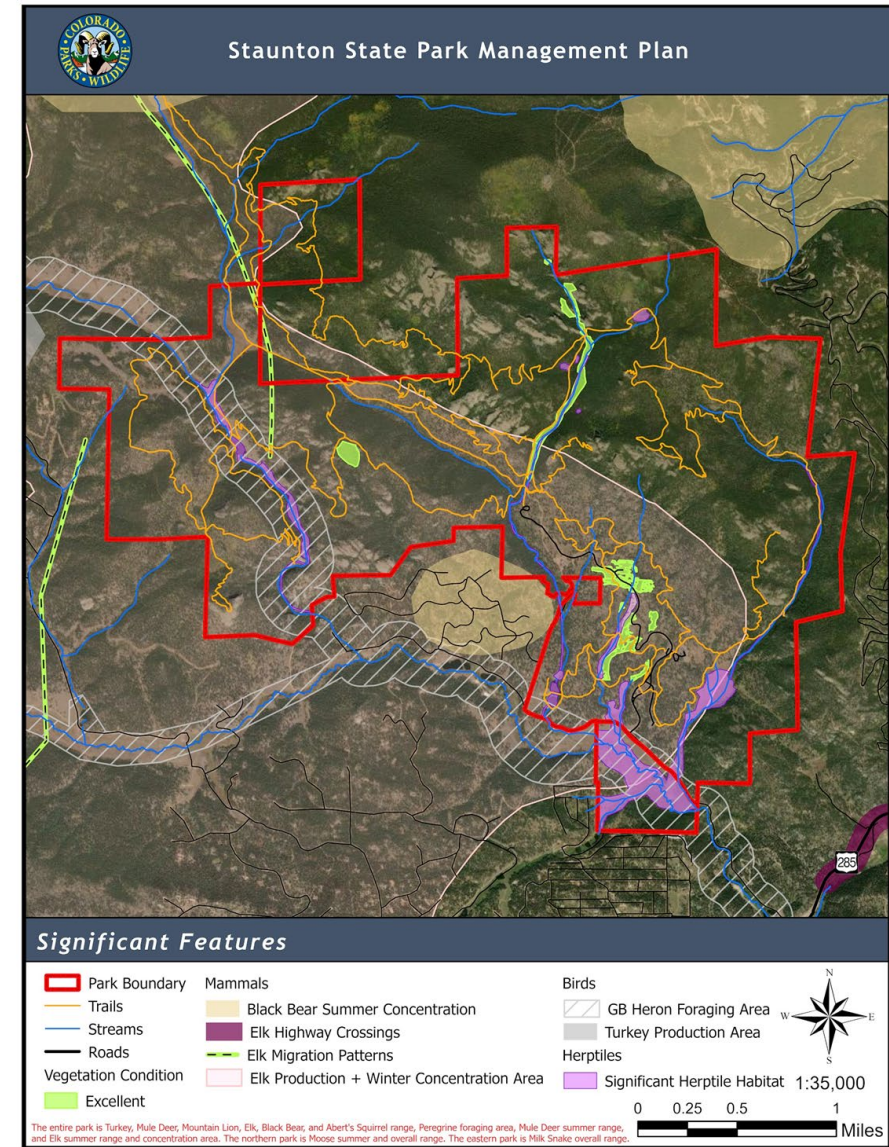


# Park Setting and Resources

## Natural Resources

Highlights within the plan for natural resources include the following:

- 2 globally imperiled rare plant species; 2 rare vulnerable ecosystems
- Large mammals
- Wildlife
- Vegetation
- Water resources
- Geohazards
- Rock outcrops



# Management Zones

Management zones establish the long-term vision for resource protection, visitor experience, and park operations.

Key considerations for Staunton State Park:

- Current park historic structures, facilities and recreation opportunities
- Natural and cultural resource locations
- Park topography
- Locations designated as a Colorado Natural Areas
- Frances Staunton's will - 90% of Staunton parcel should not be developed
- State Trust Lands





## Development Zone - 281 acres (7%)

- Visitor Center  
Campgrounds
- Maintenance facility
- Archery Range

## Passive Recreation Zone - 488 acres (12%)

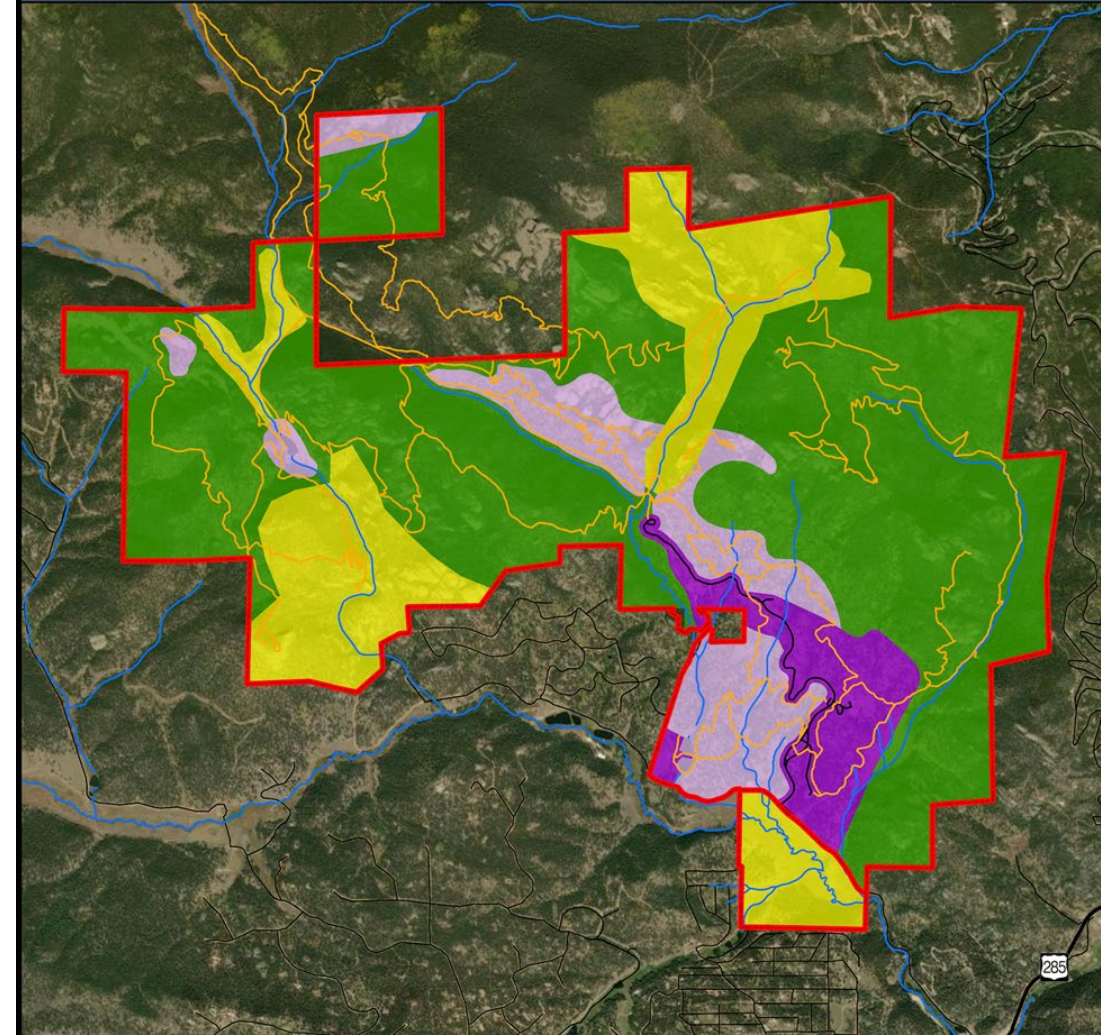
- Main roads and parking areas, heavily used trail corridors.
- Potential areas for future camping opportunities

## Natural Zone - 2,462 acres (60%)

- Minimal trail corridors

## Protection Zone - 850 acres (21%)

- CNAP designations, areas closed to public

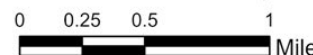


Management Zones

- |               |                         |
|---------------|-------------------------|
| Park Boundary | Developed Zone          |
| Trails        | Passive Recreation Zone |
| Roads         | Natural Zone            |
| Streams       | Protection Zone         |



1:35,000



# Enhancement Opportunities and Management Initiatives

Enhancement opportunity and management initiatives support the park's purpose and goals.

**Enhancement Opportunities** - location specific and often consist of park improvements that are significant in terms of spatial-scale and effort needed to implement them; may warrant considerable financial resources

**Management Initiatives** - generally not specific to a particular management zone and may need additional planning efforts to implement.



# Enhancement Opportunities - Existing Facilities and Infrastructure

## Developed Zone

- Increase availability of Electric Vehicle charging stations
  - Public options and Employee fleet
- Increase Accessibility options for Archery and trail access
- Repave and repair park roads
- Expand water treatment to support future development

## Passive Zone

- Support Dark Skies initiatives
- Continue Historic cabin restoration efforts



# Enhancement Opportunities - New Facilities and Infrastructure

## Developed Zone

- Explore development of the track chair program - connect additional trails beyond current access
- Expand the Davis Ponds recreation area for accessibility
- Additional group picnic areas
- New vault toilet to support Equestrian parking area
- Phase 3 campsites and camper services facility

## Passive Recreation Zone

- Install additional orienteering, geocaching, wayfinding and informational signage
- Improve and update benches, picnic areas, and shade structures



# Enhancement Opportunities - Natural Resources Rehabilitation / Restoration

## Developed Zone

- Improve and upgrade native garden at Visitor Center
- Increase revegetation efforts along developed areas
  - Facility grounds, roadways, campsites, dam rehabilitation areas

## Passive Recreation Zone

- Continue to manage seasonal closures for nesting raptors
- Install signage to increase awareness of weed free hay use by equestrians

## Protection Zone

- Install signage
- Conduct property surveys and repair fencing along western boundaries
- Support DWM management of elk herd



# Management Initiatives and Strategies

## Initiative #1 - Augment Operational and Personnel Resources

- Increase park resources and capacity
- Sustain volunteer capacity

## Initiative #2 - Improve Communication and Outreach

- Park visitors need consistent and reliable park information prior to and during their visit to support trip planning and a positive visitor experience
- Park volunteers, community members, and partners need consistent and reliable communication related to work they support in and related to the park
- Maintain robust volunteer base and communication support channels



# Management Initiatives and Strategies

## Initiative #3 - Trail Management

- Improvement in day-to-day conditions of established trails
- Long-term strategic approach to the park's trail system that supports visitation for the next 50 years and beyond
- Consistent enforcement of current regulations related to off leash dogs and off trail use

## Initiatives #4 & #5 - Manage and Protect Natural & Cultural Resources

- Implement existing resource management plans
- Continue to build a comprehensive knowledge base and an understanding of the nature, extent and condition of the park's natural and cultural resources
- Manage habitat American Goshawk (~16 fledged past 6 years)



# Management Initiatives and Strategies

## Initiative #6 - Visitor Experience and Visitor Use Management

- Improve understanding of park visitation and visitor experiences
- Expand recreational opportunities without expanding the developed park footprint
- Develop an emergency plan for the park

## Initiative #7 - Expansion of Park Lands

- Identify, evaluate, and pursue opportunities to expand park lands via new property acquisitions or land swaps.





01

Overview of Management Plan and Process

02

Key Elements of the Management Plan

03

Public Input Process

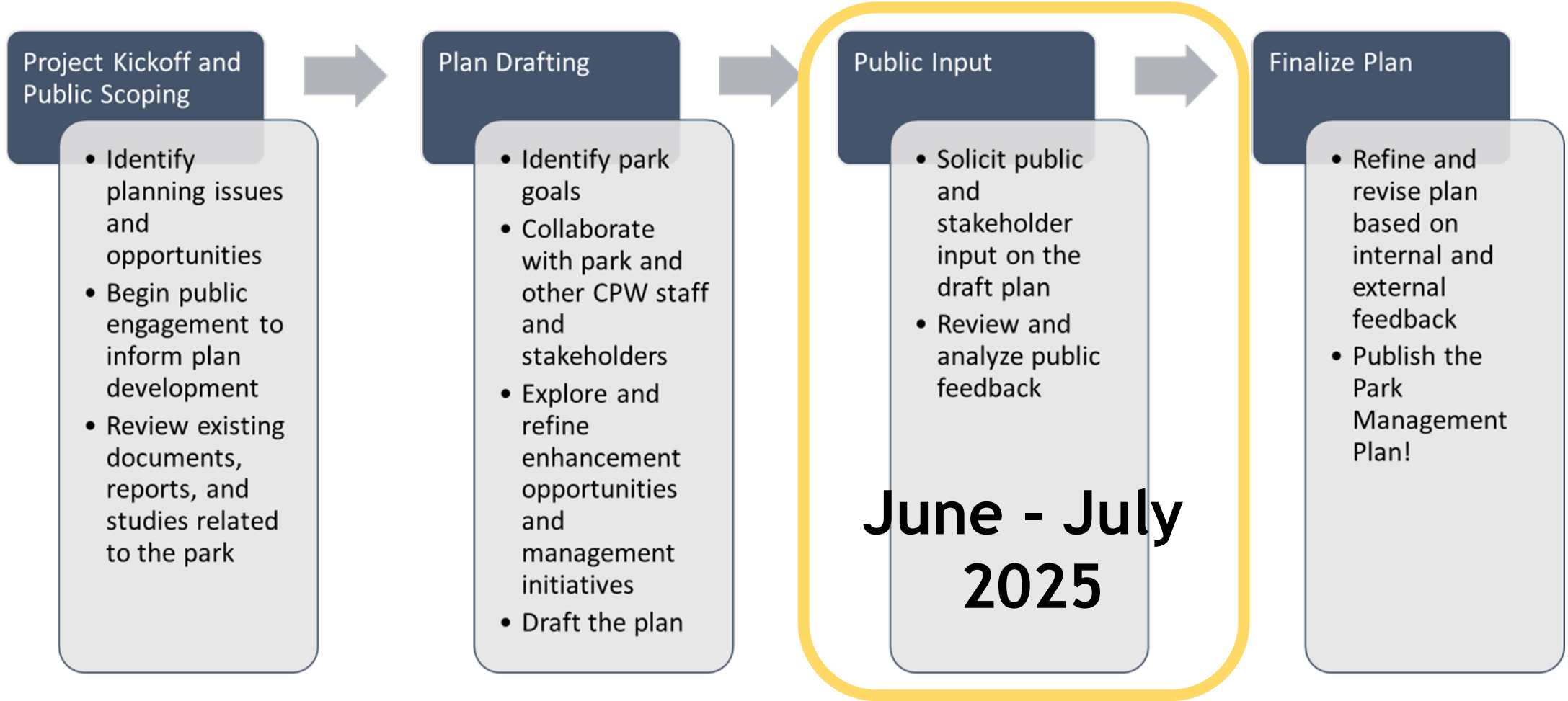
04

Questions



LIVE LIFE  
OUTSIDE

# Planning Process



LIVE LIFE  
OUTSIDE

# CPW is Seeking Public Feedback

Now through July 18th, provide input at

<http://engagecpw.org/staunton-state-park-management-plan>.

## Virtual Public Meeting

- July 1st, 6:00PM
- Register at EngageCPW

## In-Person Public Meeting

- July 8th, 6:00 PM
- Staunton Visitor Center





01

Overview of Management Plan and Process

02

Key Elements of the Management Plan

03

Public Input Process

04

Questions



LIVE LIFE  
OUTSIDE

# Questions?



LIVE LIFE  
OUTSIDE