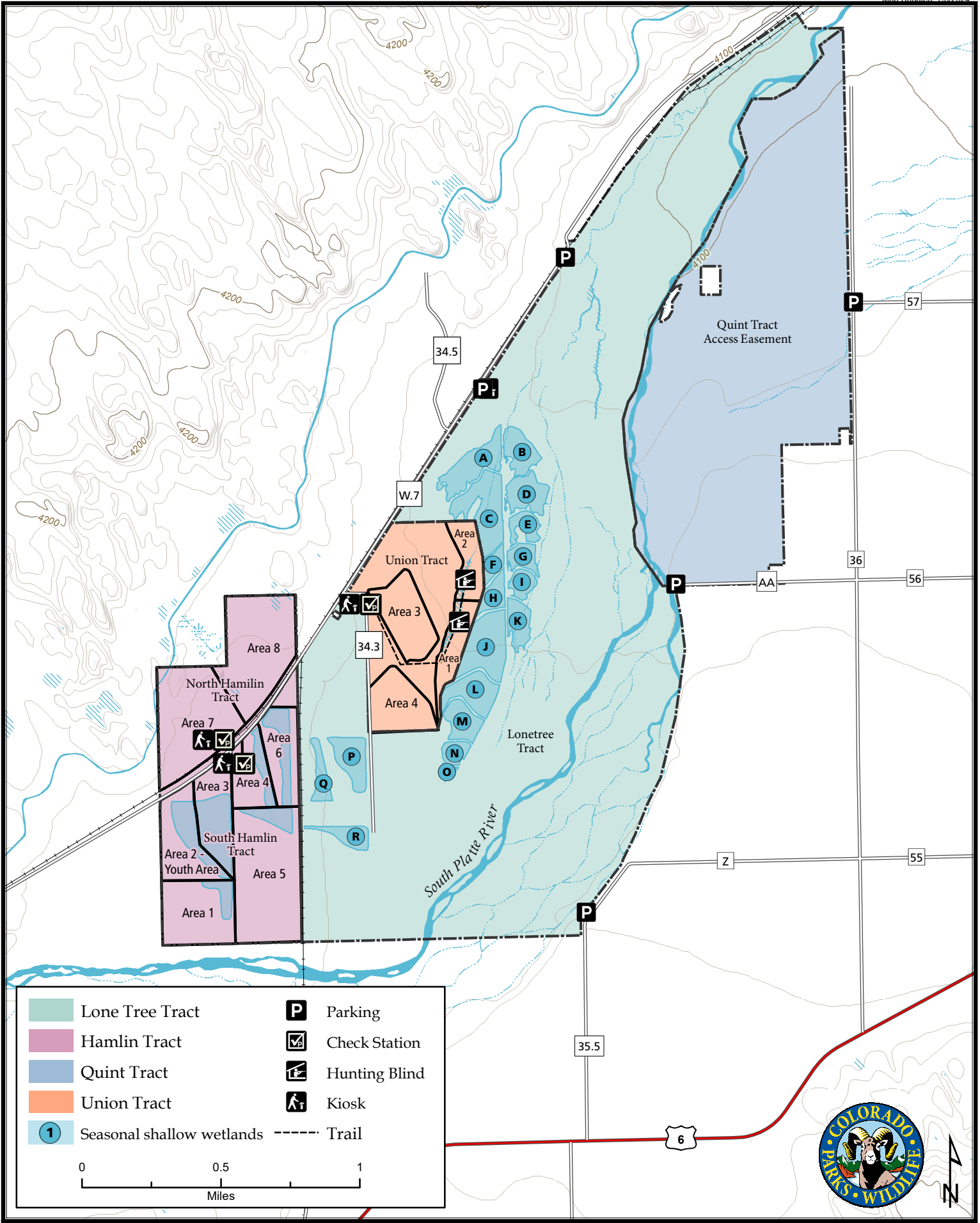


Elliott State Wildlife Area

Map Updated: 7/6/2024

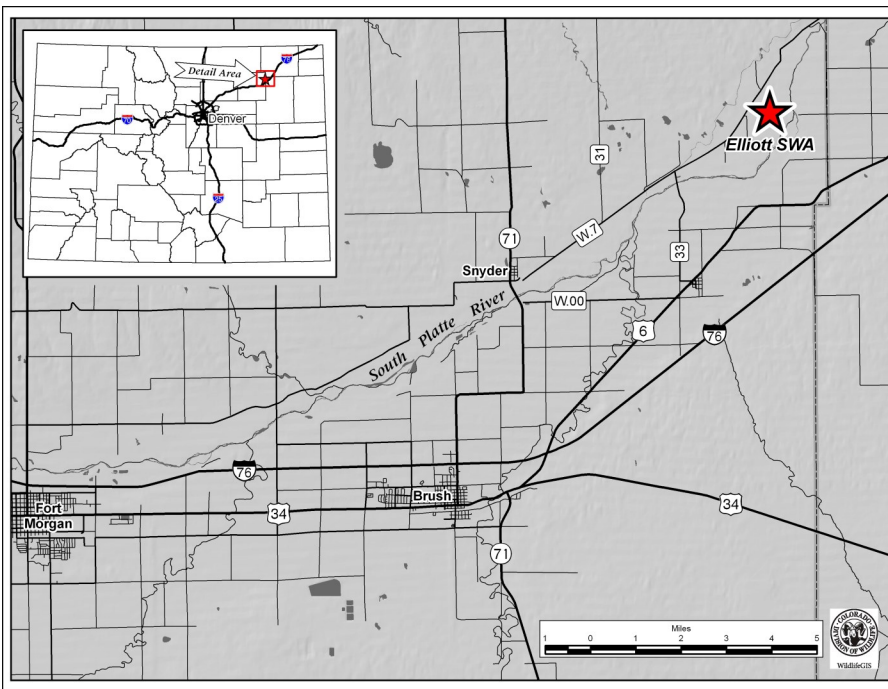


	Lone Tree Tract		Parking
	Hamlin Tract		Check Station
	Quint Tract		Hunting Blind
	Union Tract		Kiosk
	Seasonal shallow wetlands		Trail

0 0.5 1
Miles



Elliott State Wildlife Area Morgan County



Hamlin North and South Tracts, Union Tract, and Lonetree Tract: From Brush, go 6 miles north on Highway 71 to the town of Snyder, then 5 miles NE (right) on County Road W.7 to the SWA signs and designated parking areas on the left (Hamlin North) and right (Hamlin South) sides of the road. The parking for the Union Tract is one mile further on County Road W.7 on the right (SE) side of the road. Continue travelling on CR W.7, and there are two parking lots for the Lonetree Tract, on the right (SE) side of the road (see map).

Additional parking on the east side of the South Platte River for the Lonetree Tract and the Quint Tract can be accessed from county roads reached via U.S. Highway 6 (see map).

Wildlife Area Offers:

Hunting:	Deer, Pheasant, Bobwhite Quail, Rabbit, Squirrel, Turkey, Waterfowl
(GMU 95-96)	
Recreation:	Hiking, Wildlife Viewing

#901.A: On all Division properties which have reservations available or required, those reservations may be made by phone or online (cpw.state.co.us). Reservations for small game and waterfowl hunting may not be made more than 14 days in advance of the hunt date, nor after 12:00 noon on the day before the hunt date. Reservations for big game hunting may not be made more than 45 days in advance of the start of the season for which the reservation is being made. Unless otherwise specified, reservations for big game hunting are valid throughout the season designated by the license. Hunters who wish to cancel a reservation must do so no later than 12:00 noon on the day before the hunt date. Failure to hunt a reserved area without prior cancellation, or follow check station procedures, may cause forfeiture of the privilege to make reservations for the remainder of the hunting season. Hunters are limited to a maximum of one reservation per hunt date. Hunters must possess a valid license for the species to be hunted in order to make a reservation. Reservations are not transferable. The individual named on the reservation must be at the property on the day of the hunt. Hunters with reservations may only hunt the hunt area specified on the reservation. Any exceptions to the above restrictions will be listed under property specific regulations.

Regulations:

In addition to or in place of those restrictions listed in regulation #900 the below listed provisions or restrictions apply (see Chapter 9, <http://cpw.state.co.us/RulesRegs/Regulations/>).

- A. Public access is prohibited from 9:00 p.m. – 4:00 a.m.
- B. All recreational activities, except deer hunting, are prohibited on the opening weekend of the regular plains rifle deer season and on the opening day and first weekend of the late plains rifle deer season.
- C. Landowner permission is required to hunt deer on access easement.
- D. The launching or takeout of vessels is prohibited during waterfowl seasons.
- E. **Lonetree Tract:**
 1. From September 1 through the regular duck seasons, hunters must check-in and out at check station. Hunters may not check-in until 4:00 a.m.

F. Hamlin Tract:

1. From September 1 through the regular duck seasons, hunters must check-in and out at check stations. Hunters may check-in on a first-come, first-serve basis after 4:00 a.m. or after another hunter checks out. Hunters may only hunt the area they check into, and must comply with youth-mentor only area restrictions as posted. Maximum of four (4) hunters allowed per hunting area.

G. Union Tract:

1. Only waterfowl hunting allowed from designated blinds or areas, and only on Saturdays, Sundays, Wednesdays, and state and federal holidays. Reservations are required and valid until sunrise, and are limited to three (3) per hunter annually. Reservations must be made in accordance with #901.A of these regulations.
2. All hunters must check-in and out at check station. Hunters may not check-in until 4:00 a.m. and can only hunt the area reserved or which they check into. Hunters may check-in on a first-come, first-serve basis after a hunter checks out or after sunrise. A maximum of four (4) hunters allowed per hunting area.
3. During waterfowl seasons, scouting is prohibited, except on Thursdays from 10:00 a.m. until 2:00 p.m. All persons must check-in and out at the check station. All firearms and dogs prohibited while scouting.

More Information:

CPW Office (Brush): (970) 842-6300

Website: <http://cpw.state.co.us/>