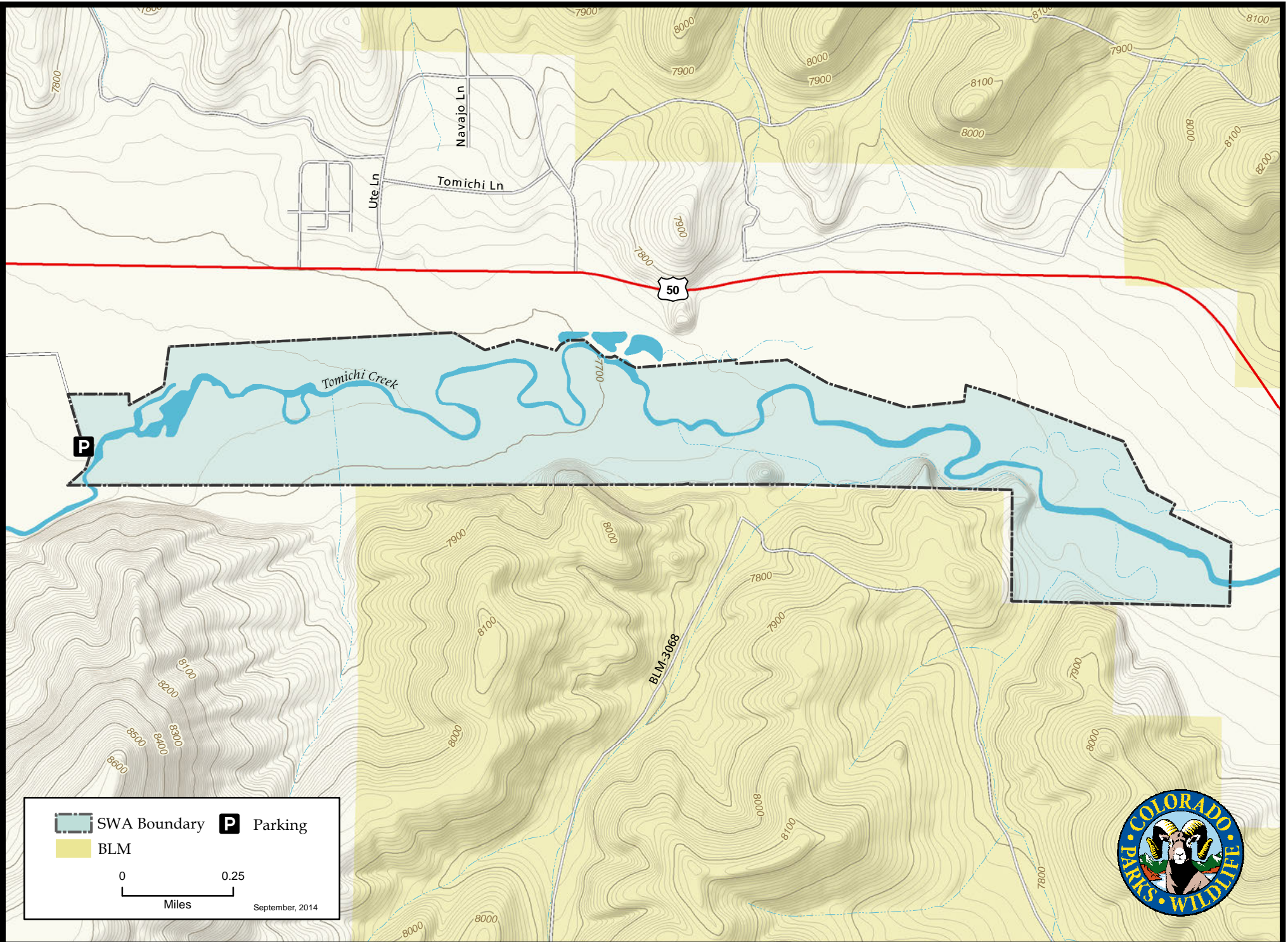





# Tomichi Creek State Wildlife Area



 SWA Boundary  Parking

 BLM

0 0.25  
Miles

September, 2014





### Tomichi Creek SWA - Gunnison County

In Gunnison, go South on Teller St. to end of road. At parking lot for softball fields, find West Mountain trail-head sign. Take the dirt road East to the SWA parking lot.

#### Wildlife Area Offers:

- Fishing: Cold water
- Hunting: Waterfowl
- Recreation: Wildlife viewing

#### Regulations:

*In addition to those restrictions listed in regulation #900 the below listed provisions or restrictions apply (see Chapter 9, <http://cpw.state.co.us/aboutus/Pages/Regulations.aspx>).*

- A. Public access is prohibited from the end of the waterfowl season through June 30, except while fishing.
- B. Dog training and field trials are prohibited.

#### More Information:

CPW Office (Gunnison): (970) 641 – 7060  
 CPW Website: <http://cpw.state.co.us>