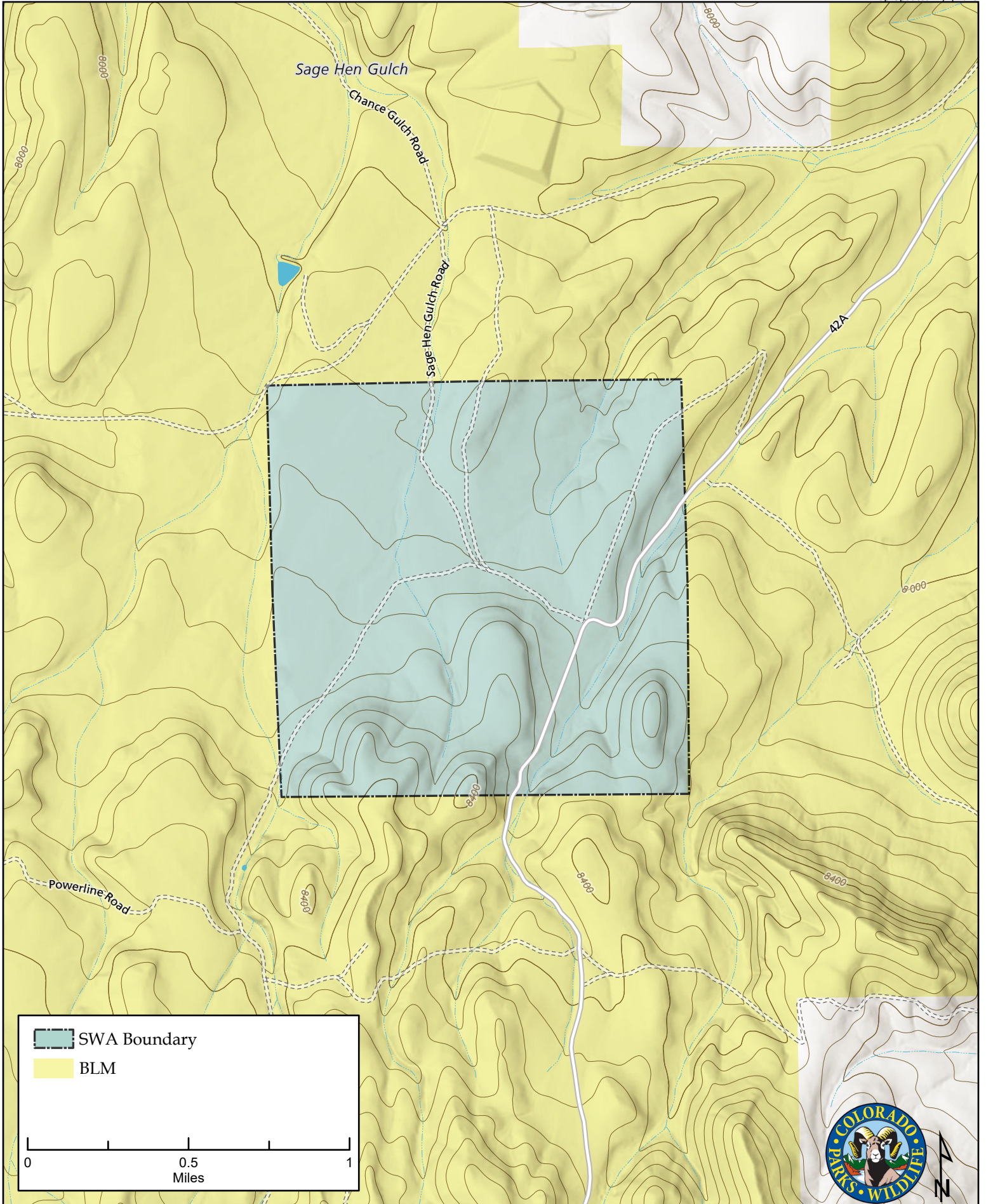
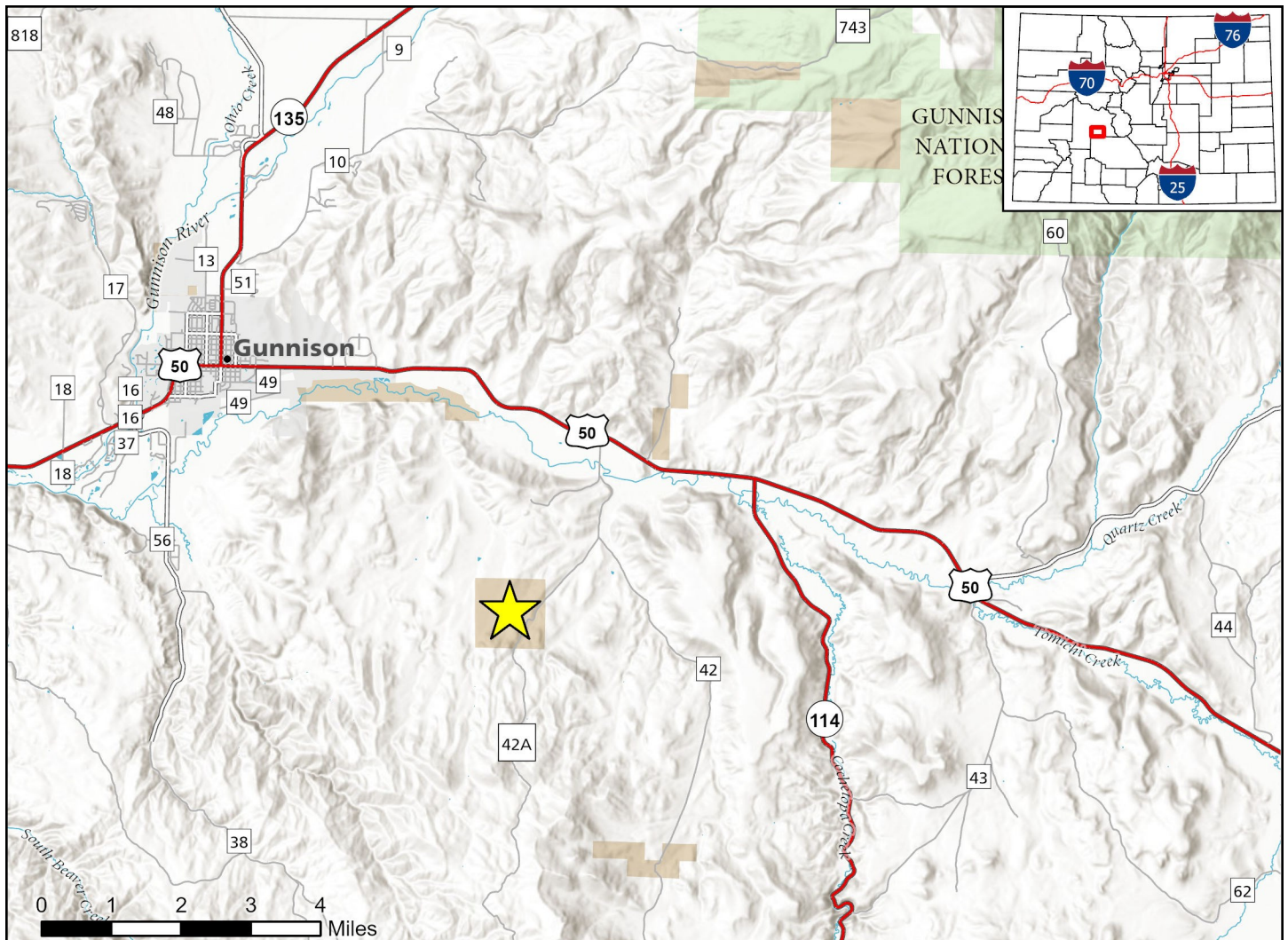


Chance Gulch State Wildlife Area

Map Updated: 1/7/2025





Chance Gulch SWA - Gunnison County

From Gunnison, go 6 miles E on Hwy. 50 to CR 42, then drive S for 1.6 milesto CR 42A, then drive SW for 1.2 miles to property boundary.

Wildlife Area Offers:

Hunting: Deer, pronghorn, small game

Regulations:

In addition to those restrictions listed in regulation #900 the below listed provisions or restrictions apply (see Chapter 9, <https://cpw.state.co.us/rules-and-regulations>).

- A. Open for public access from July 1–end of Feb., open year-round for through-traffic on Gunnison CR 42A and established roads connecting to designated BLM roads only.

More Information:

CPW Office (Gunnison): (970) 641 –7060

CPW Website: <http://cpw.state.co.us>