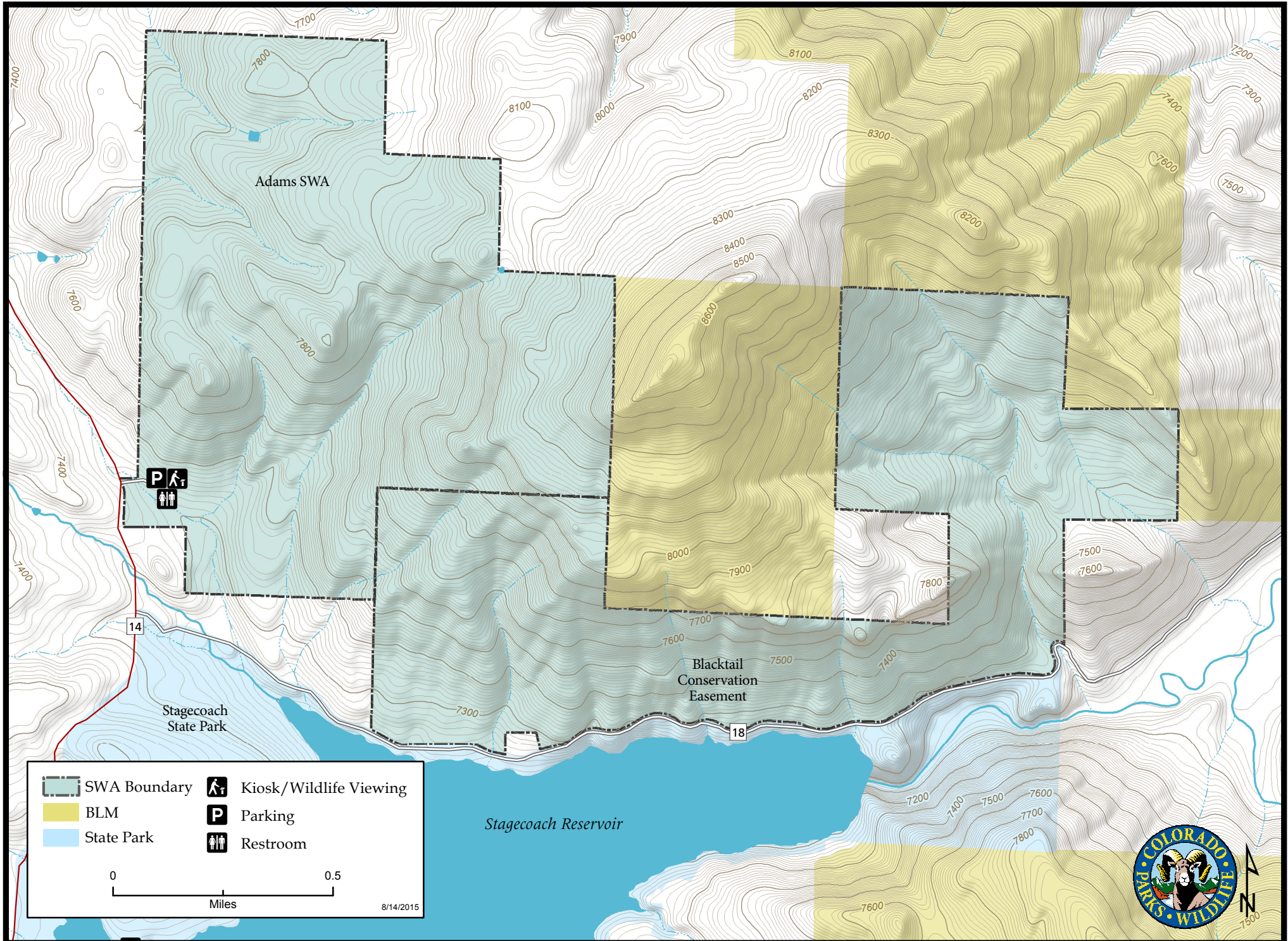
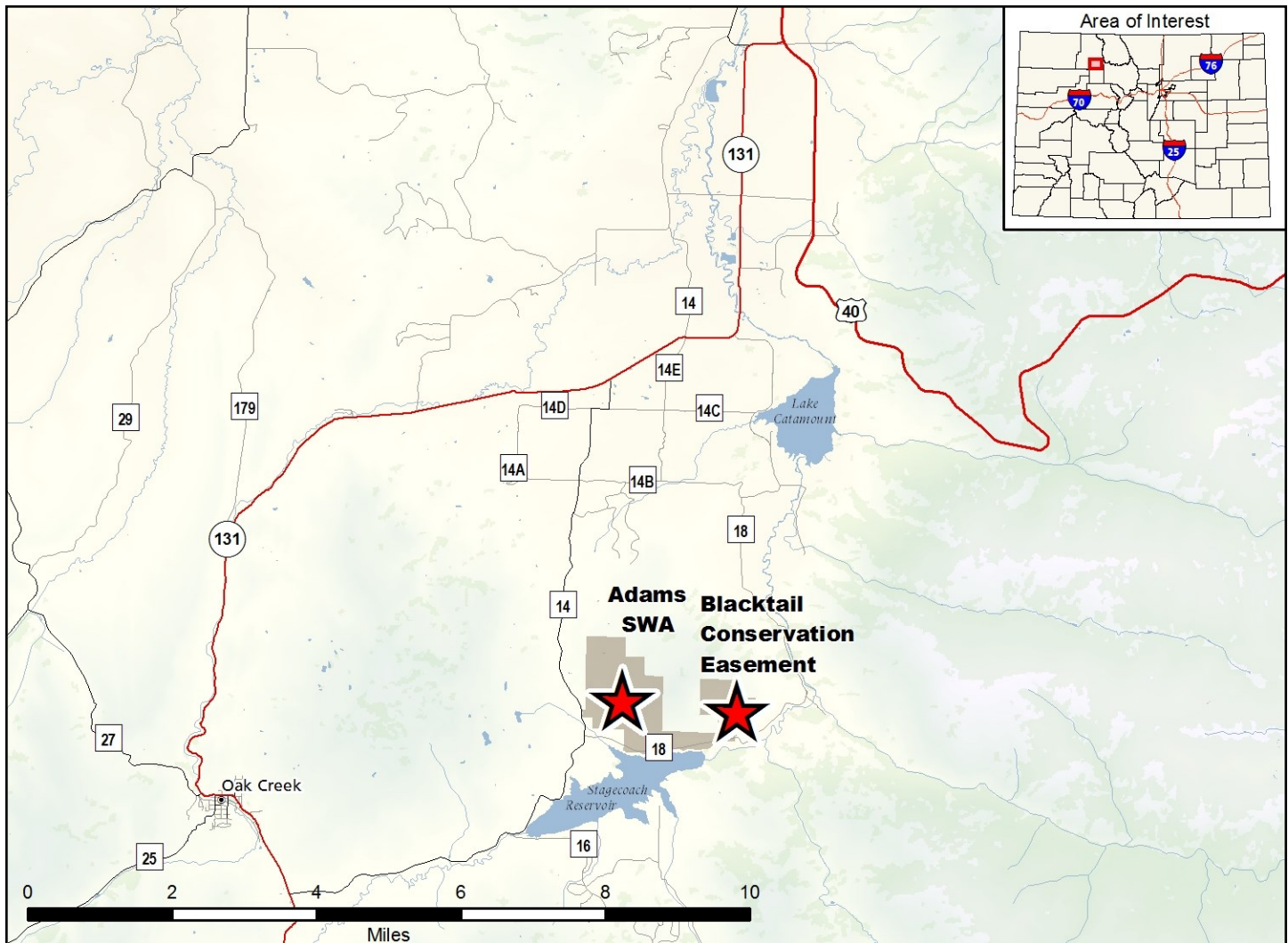


Adams State Wildlife Area & The Blacktail Conservation Easement





Adams SWA & Blacktail Conservation Easement—Routt County

From Steamboat Springs, go east on Highway 40; turn south on Highway 131. At County Road 14, go south. The SWA is 1/2 mile north of Stagecoach State Park.

Wildlife Area Offers:

Hunting: Elk, Deer, Rabbit, Dusky (Blue) Grouse

Recreation: Wildlife Viewing

Regulations:

In addition to or in place of those restrictions listed in regulation #900 the below listed provisions or restrictions apply (see Ch. 9, <http://cpw.state.co.us/aboutus/Pages/Regulations.aspx>).

Adams SWA

- A. Public access is prohibited from December 1 through July 15.
- B. Discharge of firearms or bows is prohibited, except while hunting.

Blacktail Conservation Easement

- A. Public access is prohibited from December 1 through July 15.
- B. Discharge of firearms or bows is prohibited, except while hunting.

More Information:

CPW Office (Steamboat): (970) 870-3333

CPW Website: <https://cpw.state.co.us/>