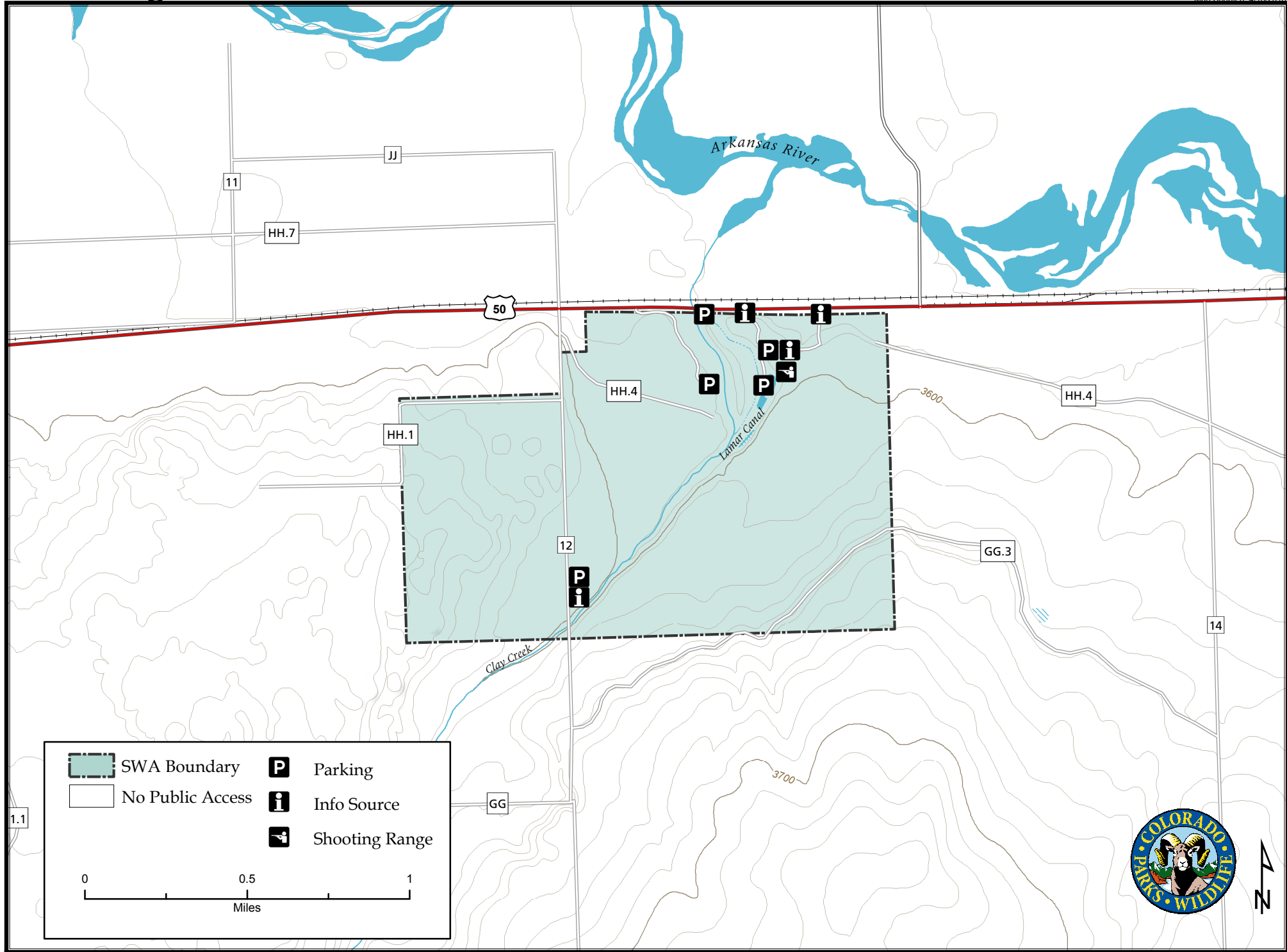


Mike Higbee State Wildlife Area

Map Updated: 4/18/2018





Mike Higbee SWA - Prowers County

From Lamar, go 4 miles east on U.S. Highway 50 to the signs at the access road on the right.

Wildlife Area Offers:

Hunting: Deer, Rabbit, Squirrel, Pheasant,
Bobwhite Quail, Scaled Quail, Dove,
Waterfowl

Fishing: Warmwater

Recreation: Camping, Hiking, Archery/Rifle
Range

Regulations:

In addition to those restrictions listed in regulation #900 the below listed provisions or restrictions apply (see Chapter 9, <http://cpw.state.co.us/aboutus/Pages/Regulations.aspx>).

- A. Public access is prohibited from one (1) hour after sunset until one (1) hour before sunrise, except while camping or while actively hunting or fishing.
- B. Game birds listed in #009(B) of these regulations may be released by the Division or its agent for educational or training purposes without seasonal or numerical restrictions.
- C. Camping is allowed in designated and established camping areas.

More Information:

CPW Office (Lamar): (719) 336 - 6600

CPW Website: <http://cpw.state.co.us>