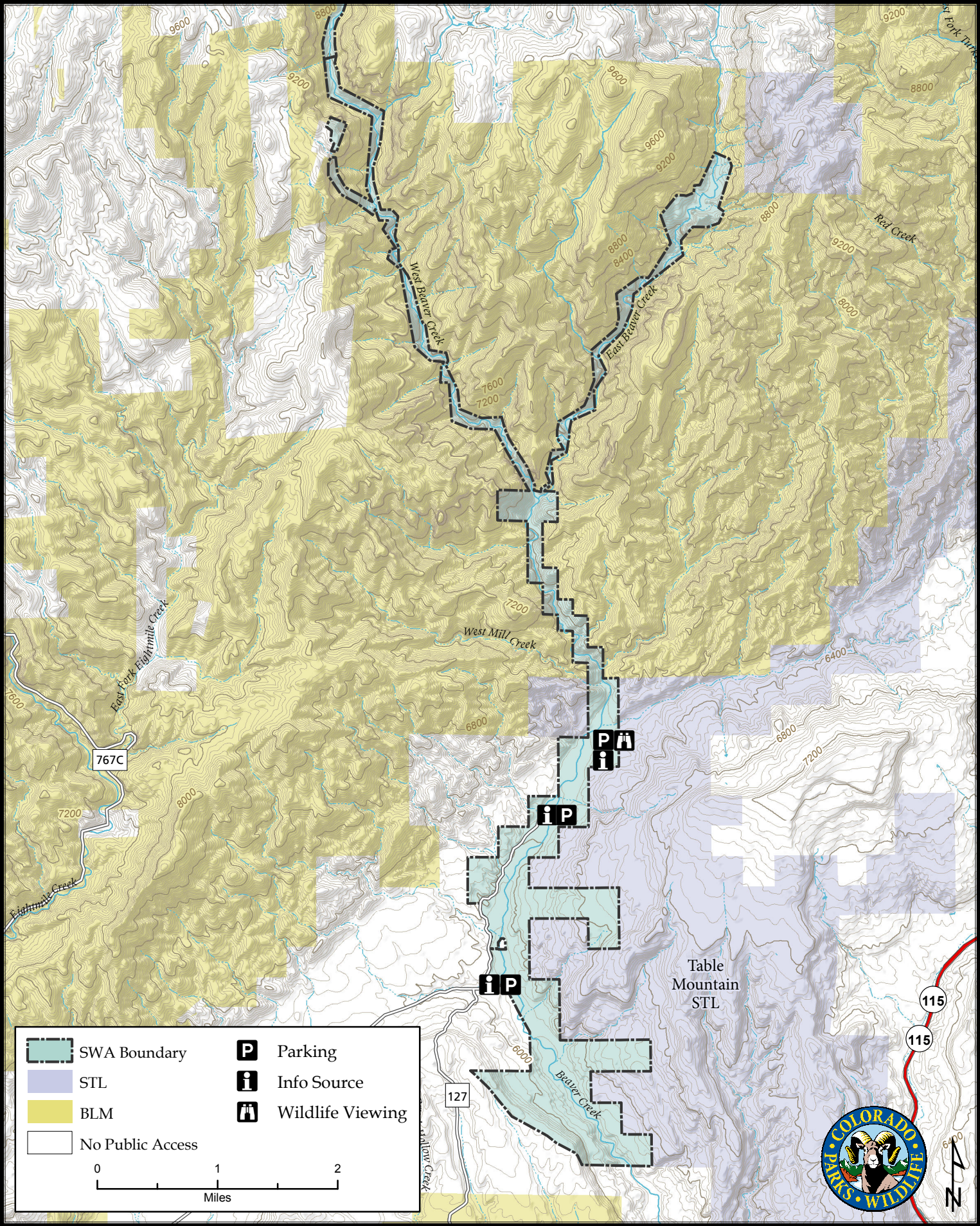
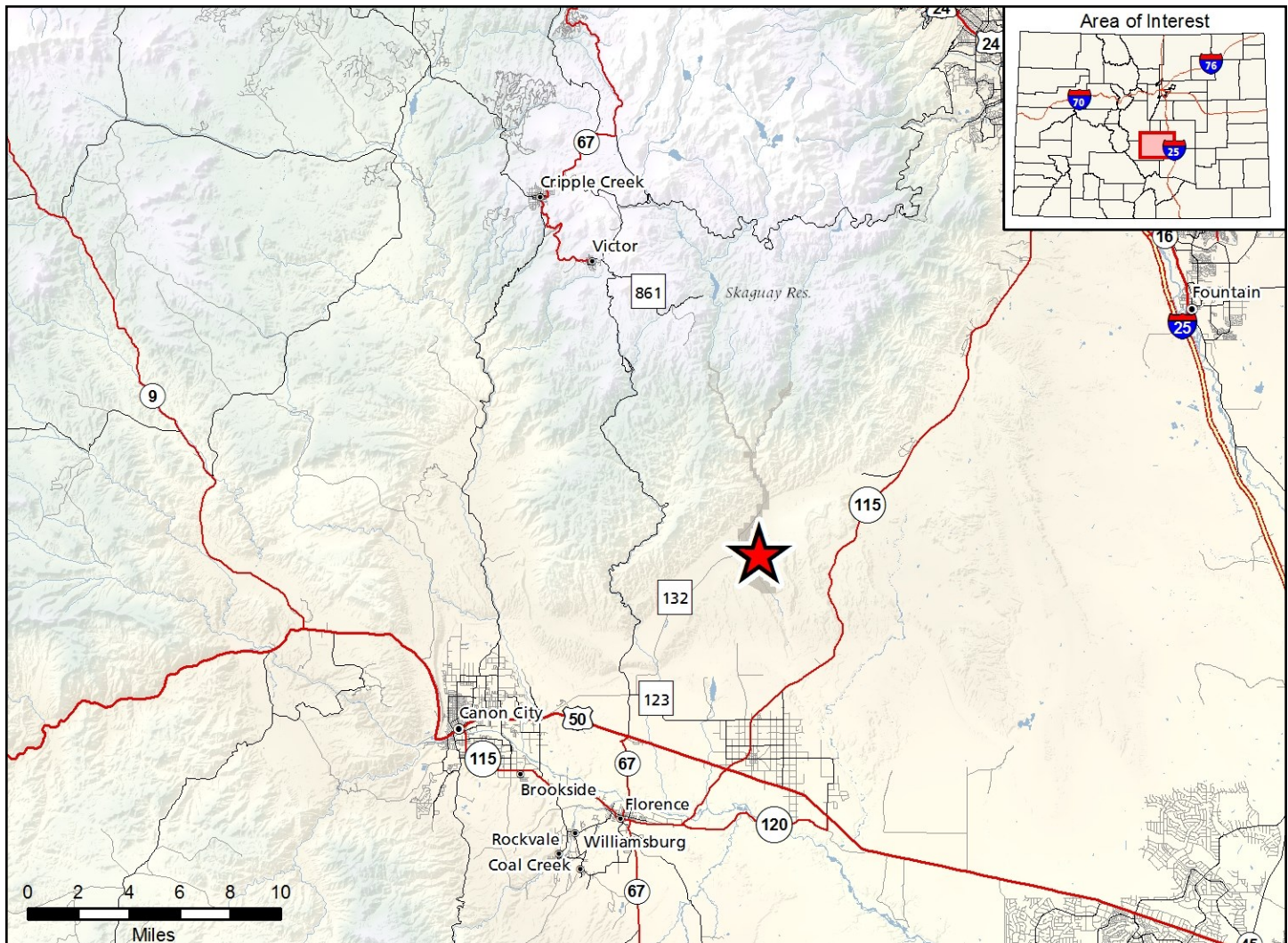


Beaver Creek State Wildlife Area

Map Updated: 5/30/2018





Beaver Creek SWA - Fremont County

From Cañon City, go 8 miles E on Hwy. 50 to Hwy. 67 (Phantom Canyon Rd.), then go N 2 miles to CR 123, then E 0.2 of a mile to CR 132, then N 9 miles to property. Or: From Skaguay Dam, go downstream 12 miles on trail to property (2-day hike).

Wildlife Area Offers:

Hunting: Deer, Bighorn Sheep, Rabbit, Turkey, Dove

Fishing: Coldwater Stream

Recreation: Wildlife Viewing

Regulations:

In addition to those restrictions listed in regulation #900 the below listed provisions or restrictions apply (see Chapter 9, <http://cpw.state.co.us/aboutus/Pages/Regulations.aspx>).

- A. Public access is prohibited from August 15 through April 30, except while hunting or fishing or while wildlife viewing from established parking areas.
- B. Dogs are prohibited.

More Information:

CPW Office (Salida): (719) 530 - 5520

CPW Website: <http://cpw.state.co.us>