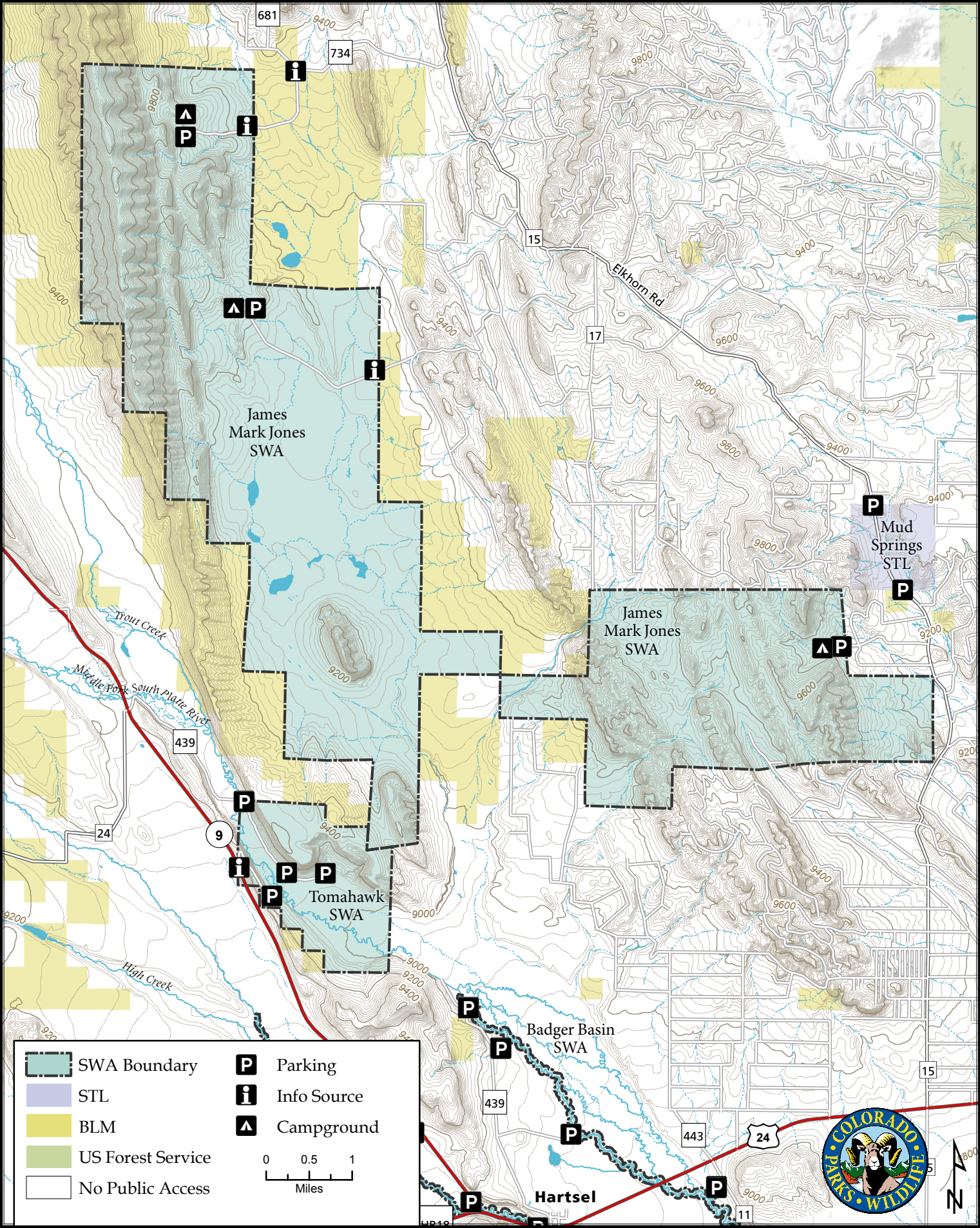
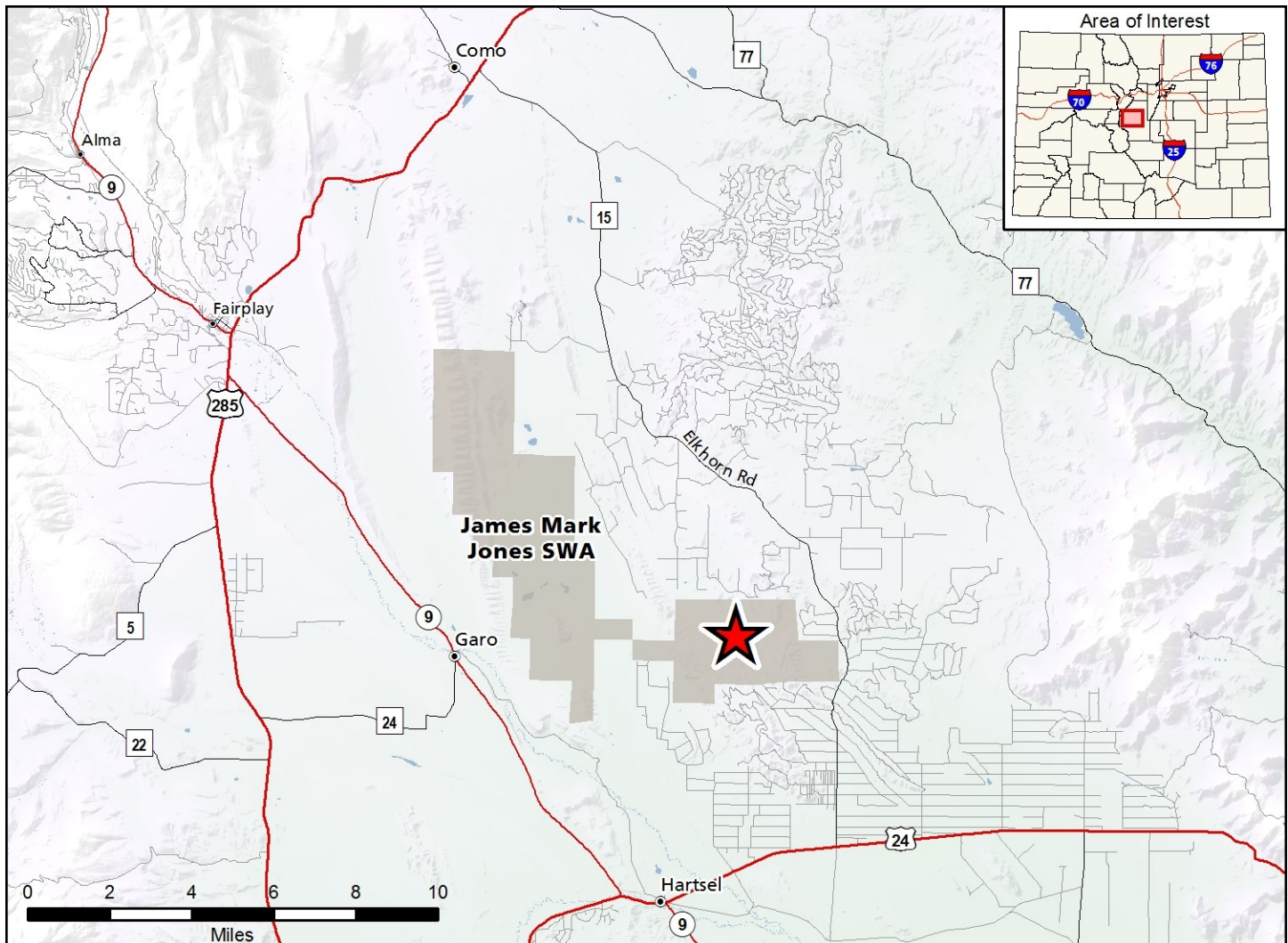


James Mark Jones State Wildlife Area

Map Updated: 9/11/2019





James Mark Jones SWA - Park County

From Hwy. 24 East of Hartsel, take CR 15 (Elkhorn Rd.) North 15 miles to sign. Go West 1.8 miles to parking area. From Hwy. 285 at Como turnoff, take CR 15 SE 8 miles to sign. Go West 1.8 miles to parking area. Road to parking area not maintained in winter.

Wildlife Area Offers:

Hunting: Big Game, Small Game
Recreation: Wildlife Viewing

Regulations:

In addition to or in place of those restrictions listed in regulation #900 the below listed provisions or restrictions apply (see Ch. 9, <http://cpw.state.co.us/aboutus/Pages/Regulations.aspx>).

- Public access is prohibited January 1 through May 1.
- Camping is allowed from May 2 through August 13.
- Camping is allowed by licensed hunters from August 14 through the end of the late elk season.
- Fires are allowed within an established containment structure in designated areas.
- Dog training and field trials are prohibited.

More Information:

CPW NE Regional Office (Denver): (303) 291- 7227
Website: <https://cpw.state.co.us/>