

East Slope Mountain Lion Management Plan



November 14-15, 2024
Lamar PWC Meeting

Mark Vieira
Carnivore and Furbearer Program Manager



LIVE LIFE
OUTSIDE

TEAM EFFORT



LIVE LIFE
OUTSIDE

East Slope Plan Public Process



Jessika Hodgson

- 6 in-person public meetings
- 2 virtual meetings
- Numerous stakeholder meetings
- 30-day public comment
- Independent external review
 - peer agency
 - academic
- Draft presentation at Aug 2024 PWC meeting in Colorado Springs

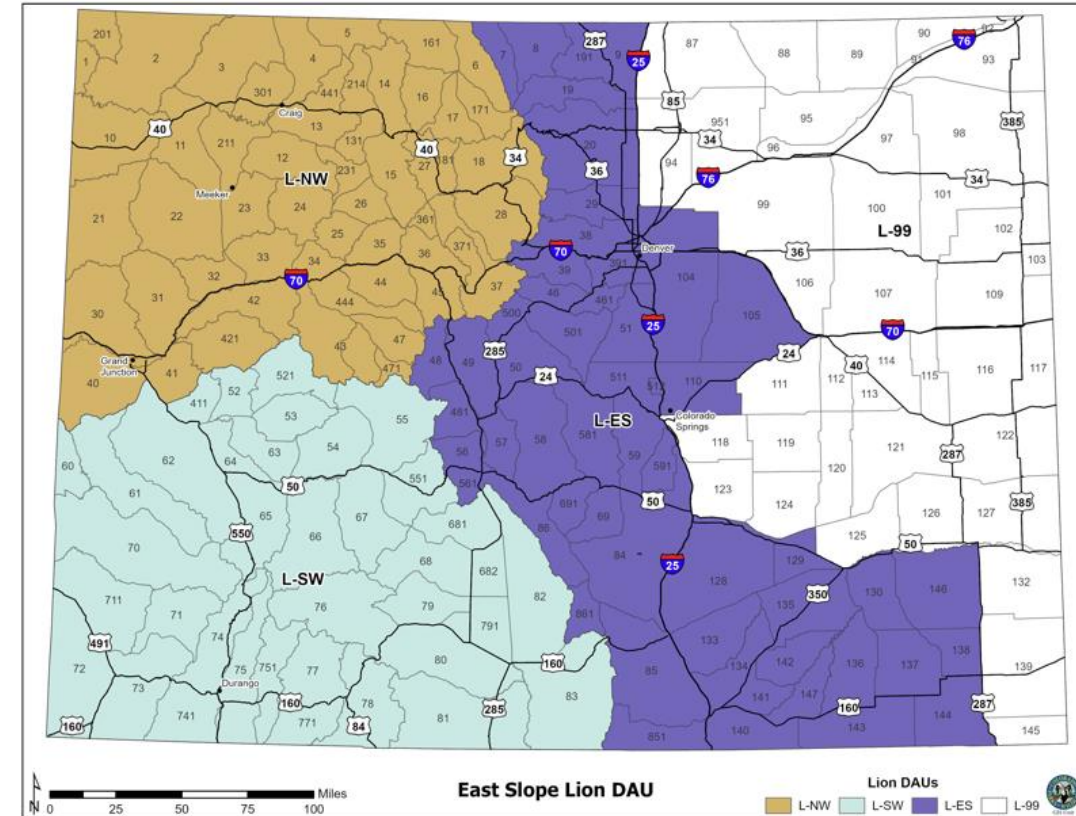
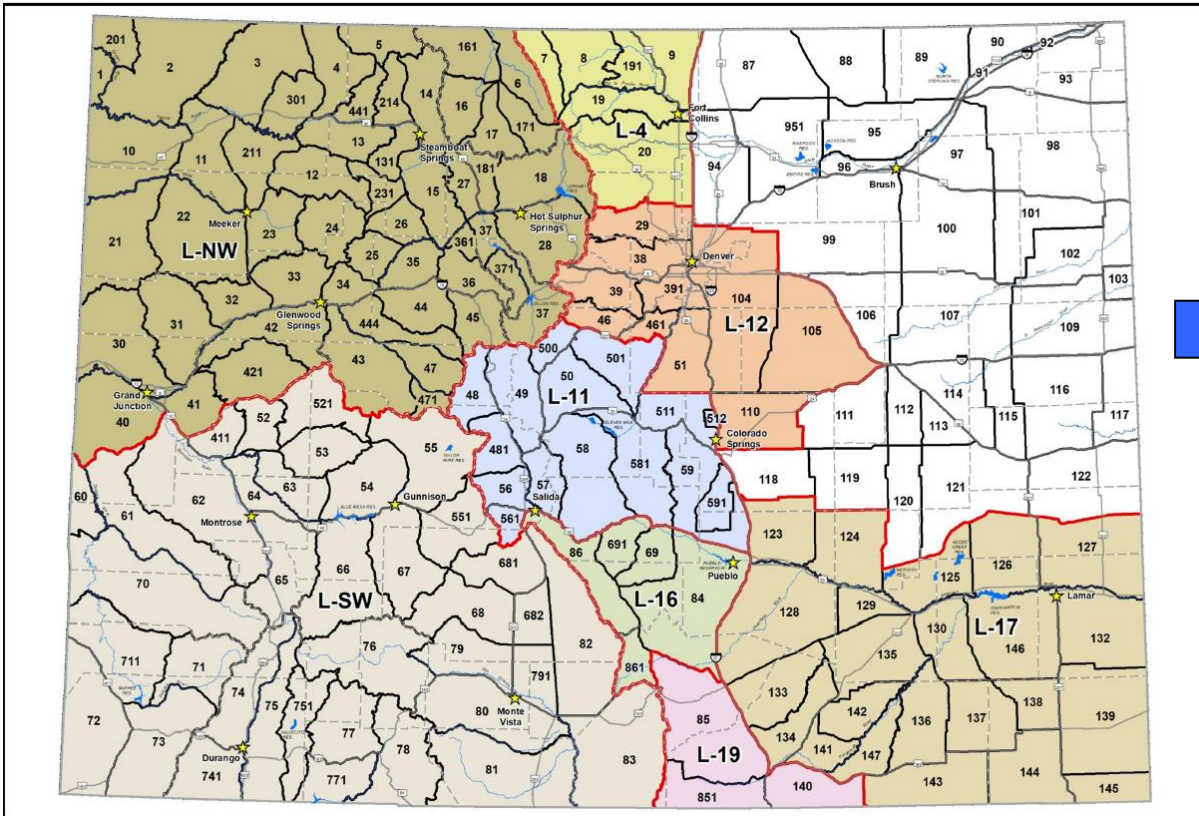


LIVE LIFE
OUTSIDE

Increasing Spatial Scale and Stable Objective

Current DAUs

Proposed DAUs



Plan Objective and Management Thresholds

- East Slope Plan Objective:
 - *Stable* Lion Population
- Two independent thresholds, evaluated annually, to keep population at this *Stable* Objective



LIVE LIFE
OUTSIDE

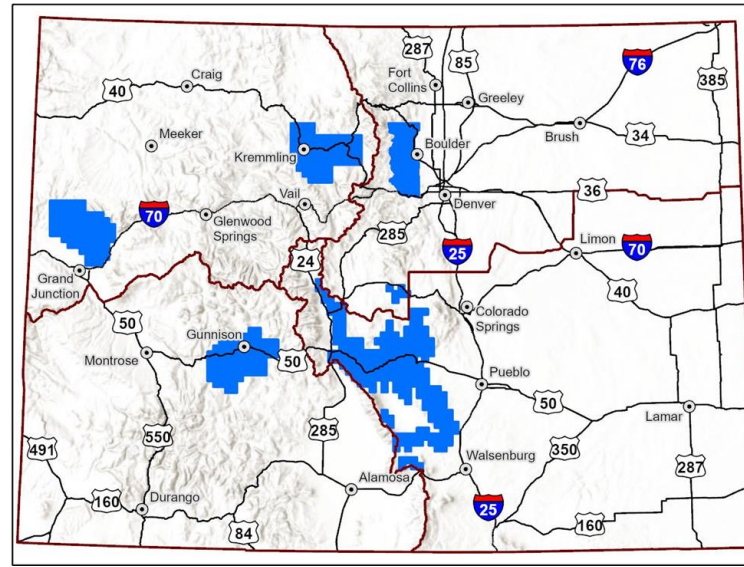
Management Thresholds

- The Adult female proportion in harvest will not exceed 22% of the total harvest composition (in any single year)
- Total human-caused mortality will not exceed 17% of the projected lion population in L-ES (using a running 3-year average)
- Both selected to support a stable population level



LIVE LIFE
OUTSIDE

Lion Density Surveys



Use mark-resight surveys on the East Slope to confirm and align RSF model and refine lion densities applied

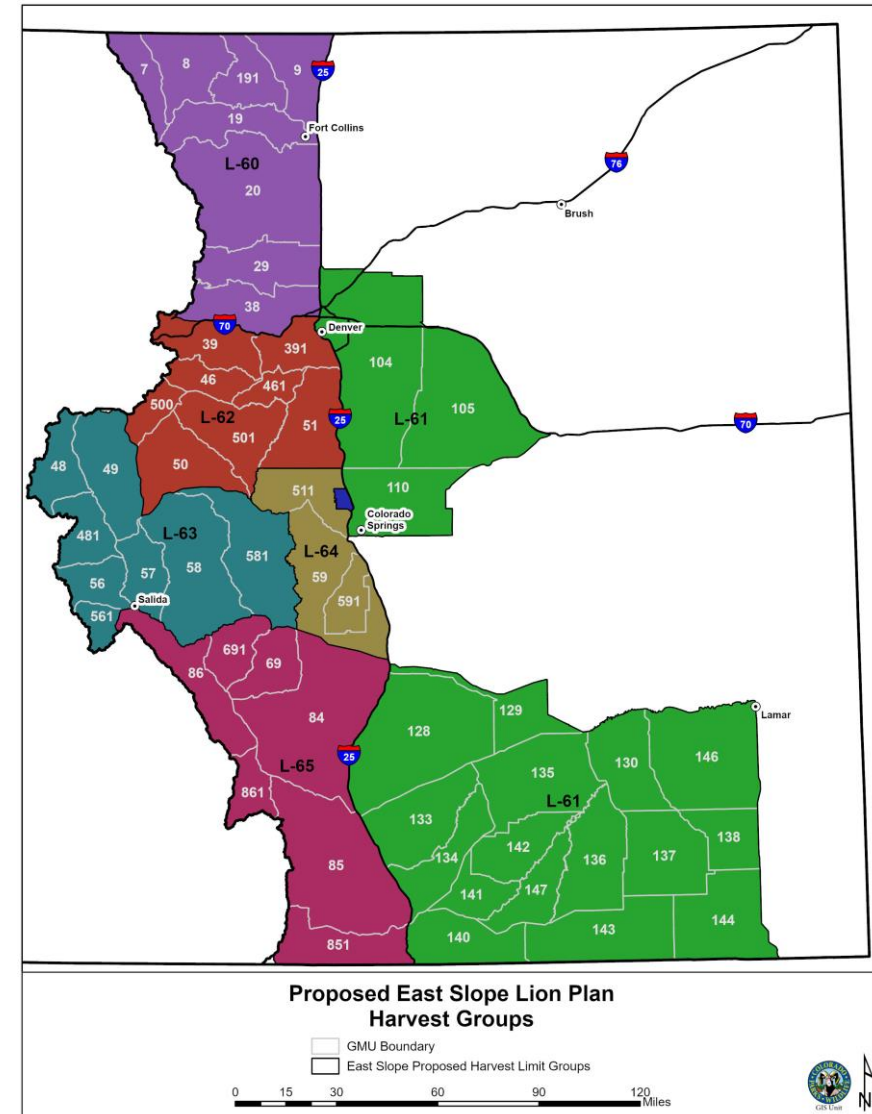


LIVE LIFE
OUTSIDE

New Regulations for 2025 Under Approved East Slope Lion Plan

Regulations to implement the plan:

- Reduction in harvest limits
 - ✓ L-ES harvest objective in 2025-2026 and 2026-2027 will represent a **53 lion reduction (25%)** from current totals
- Change in harvest limit groups
 - ✓ Harvest limit groups will group more GMUs together
- No April season for 3 years



Timeline and Process for Plan Approval and Implementation

- Two-step PWC approval process for East Slope Lion Plan in August and November 2024
- Regulations needed for implementation presented in November 2024 (draft) and January 2025 (final)
- Harvest limits proposed in Plan approved in January 2025
- Implementation of Plan beginning in the April 2025-March 2026 lion season

