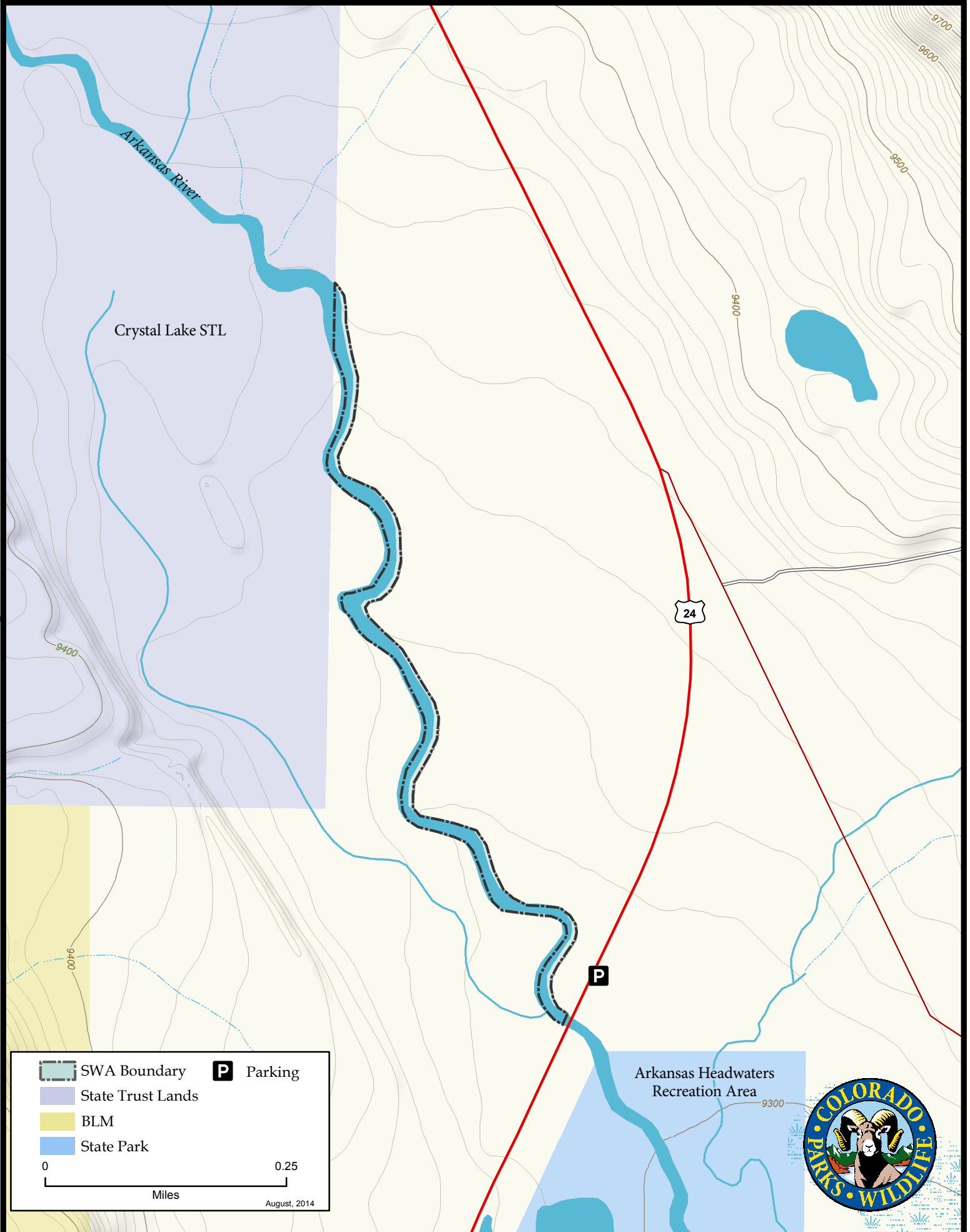


# Reddy State Wildlife Area



SWA Boundary Parking

State Trust Lands

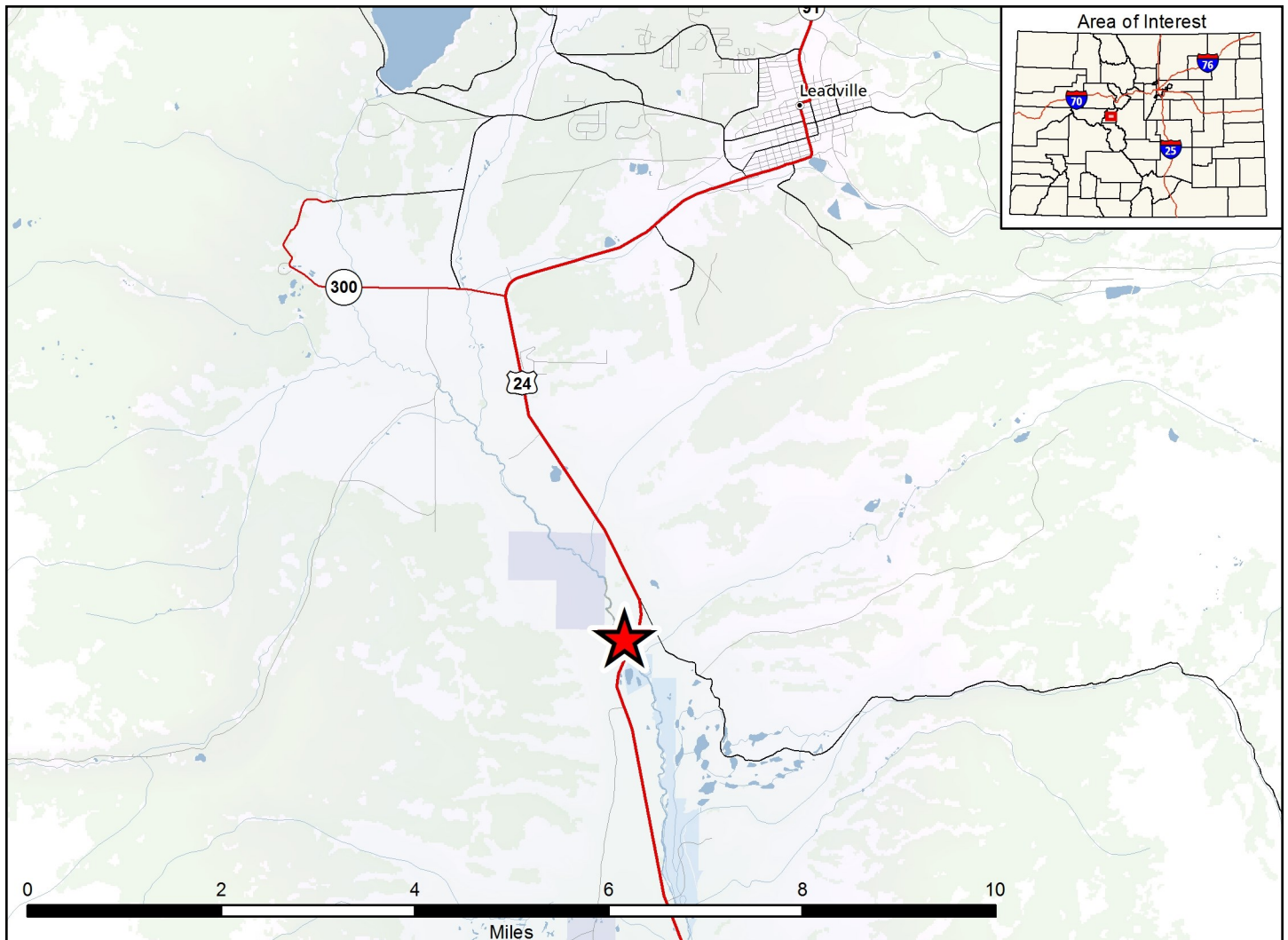
BLM

State Park

0 0.25  
Miles

August, 2014





### Reddy SWA - Lake County

SWA is about 7 miles S of Leadville on Hwy. 24, at the Arkansas River highway overpass.

#### Wildlife Area Offers:

Fishing: Cold water

#### Regulations:

In addition to those restrictions listed in regulation #900 the below listed provisions or restrictions apply (see Chapter 9, <http://cpw.state.co.us/aboutus/Pages/Regulations.aspx>).

- A. Public access is allowed while fishing only.
- B. Public access is allowed only within 30 feet of the high water line, or as otherwise posted.
- C. Parking and access is allowed from designated parking areas only.
- D. Dogs are prohibited.

#### More Information:

CPW Office (Salida): (719) 530 -5520

CPW Website: <http://cpw.state.co.us>