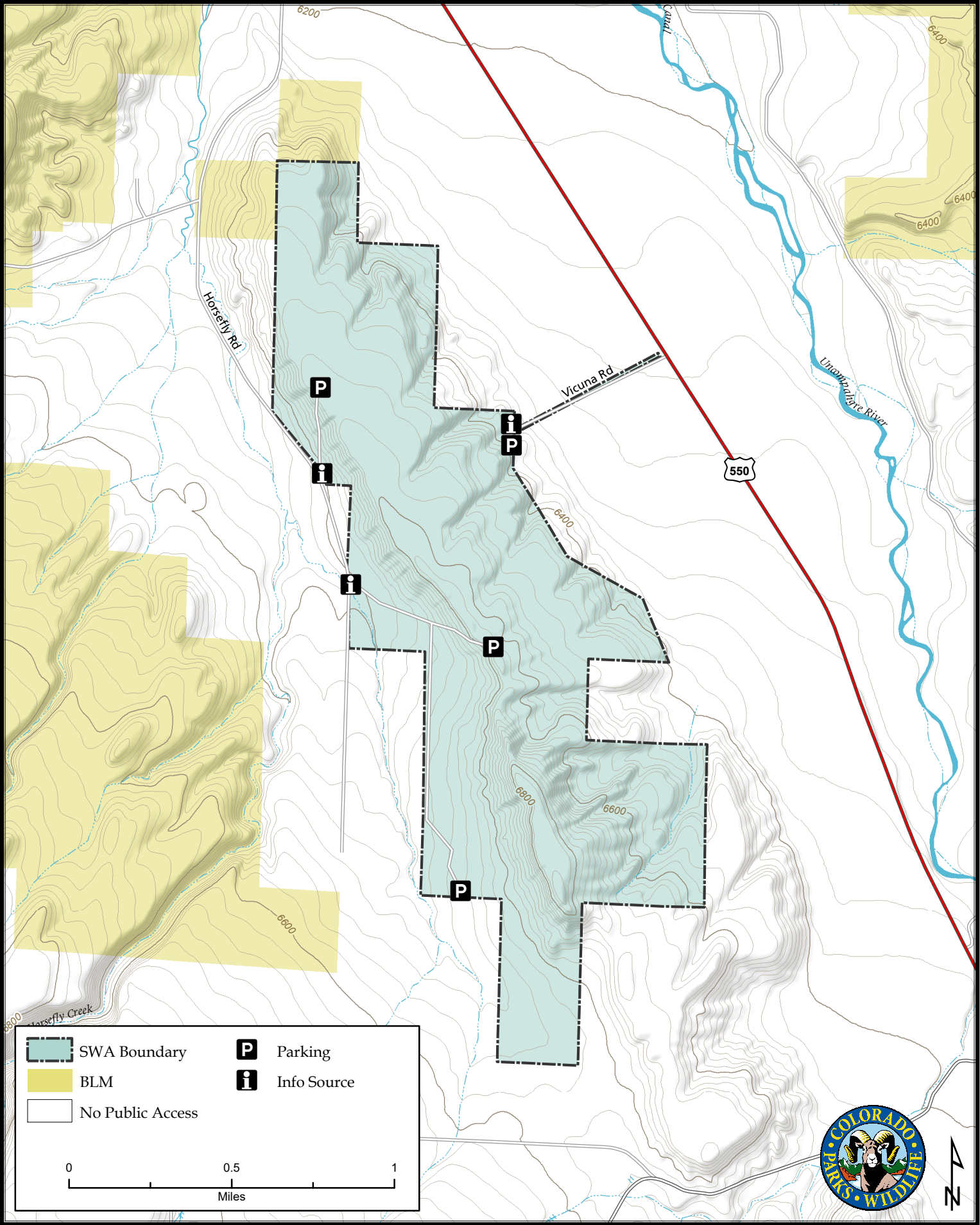


# Billy Creek State Wildlife Area - Colona Tract

Map Updated: 11/12/2020

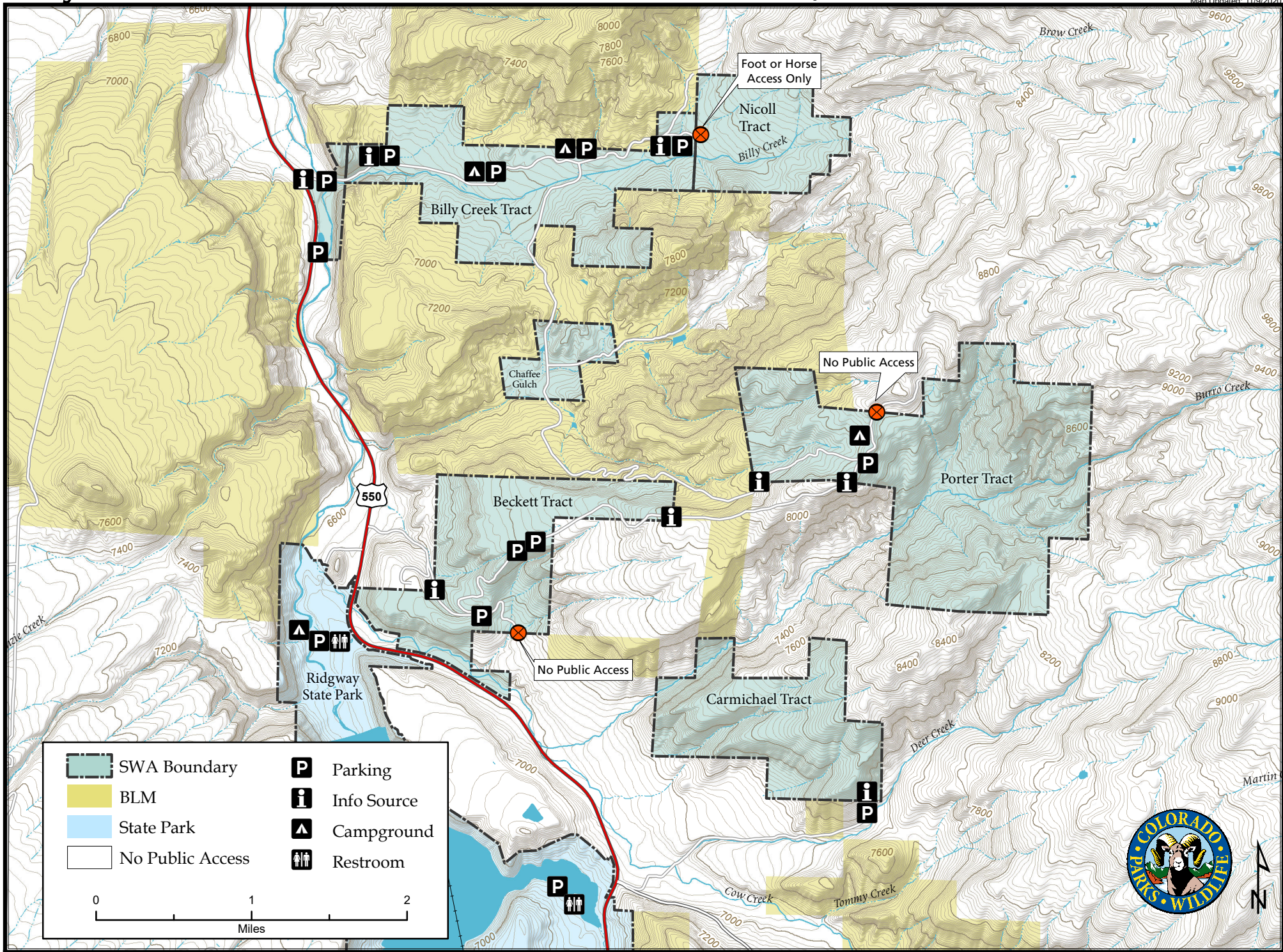




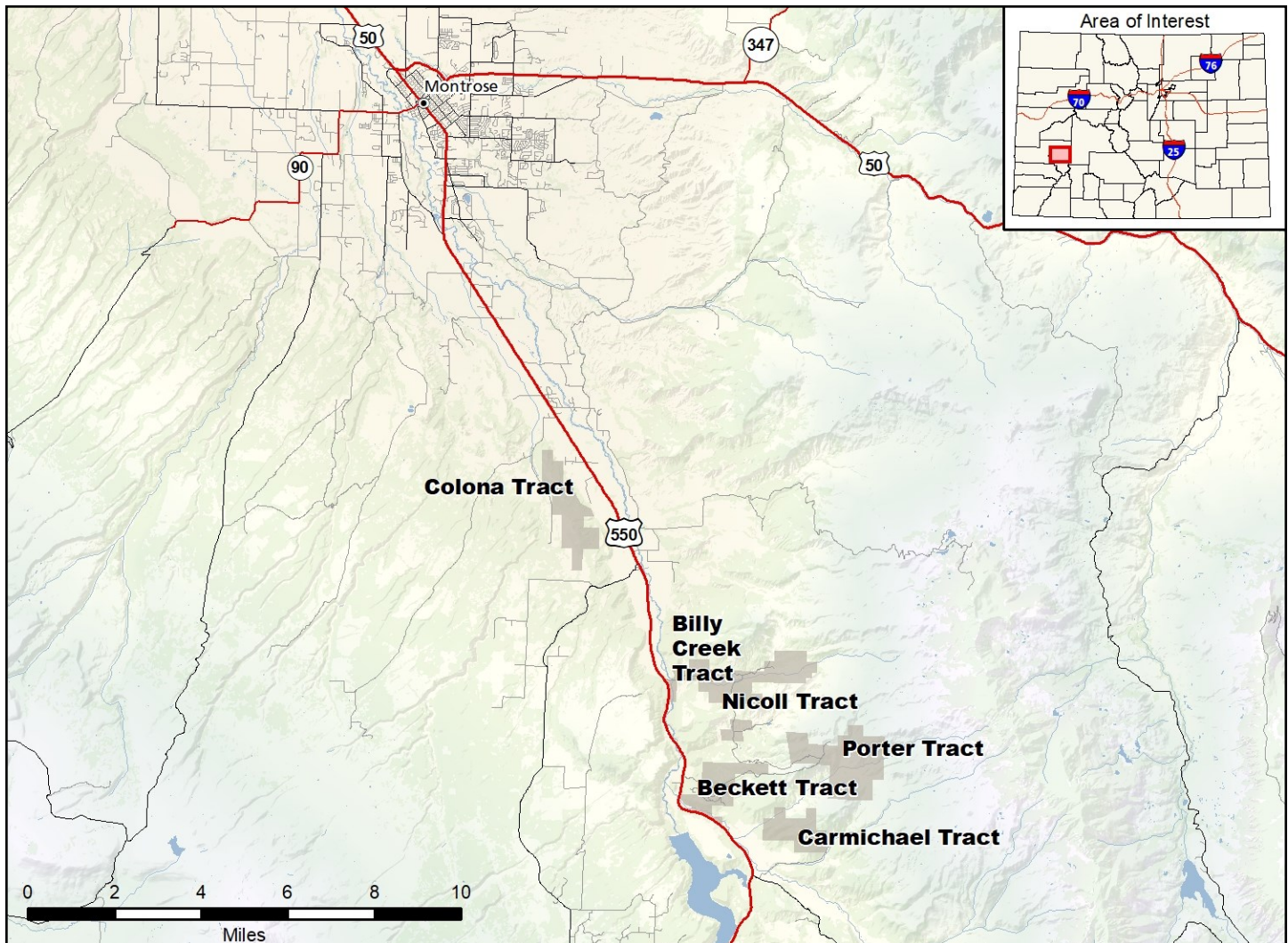
# Billy Creek State Wildlife Area

## Beckett, Billy Creek, Carmichael, Nicoll & Porter Tracts

Map Updated: 11/9/2020







### Billy Creek SWA - Montrose & Ouray Counties

From Montrose, go S on Hwy. 550:

**Colona Tract:** 7 miles to Government Springs Road, and then 2 miles west (right) to the marked access road.

**Billy Creek Tract:** 16 miles to Ouray CR 2 (gravel road next to CPW house), go east (left) over bridge and follow dirt road to property. Road also leads to **Nicholl and Porter Tracts**.

**Beckett Tract:** 18 miles to the access road at Ouray CR 4, go east (left) 1/2 mile to property.

**Carmichael Tract:** 21 miles to Ouray CR 8, go east (left) through the ranch yard, continue 1 1/4 miles on dirt road to property.

#### Wildlife Area Offers:

Hunting: Deer, Elk, rabbit, dove (GMU 62, 65)

Fishing: Coldwater stream, pond

Recreation: Wildlife viewing, camping, hiking

#### More Information:

CPW Office (Montrose): (970) 252 - 6000

CPW Website: <http://cpw.state.co.us>

#### Regulations:

In addition to those restrictions listed in regulation #900 the below listed provisions or restrictions apply (see Chapter 9, <http://cpw.state.co.us/aboutus/Pages/Regulations.aspx>).

- A. Camping is allowed by licensed hunters during an established big game season plus (3) days before and (3) days after each season.
- B. Public access is prohibited from January 1 through April 30, except for hunting, fishing, and trapping along the Uncompahgre River corridor from US Hwy 550 to 100 feet from the east bank of the river.
- C. Launching and take out of non-motorized vessels is allowed.