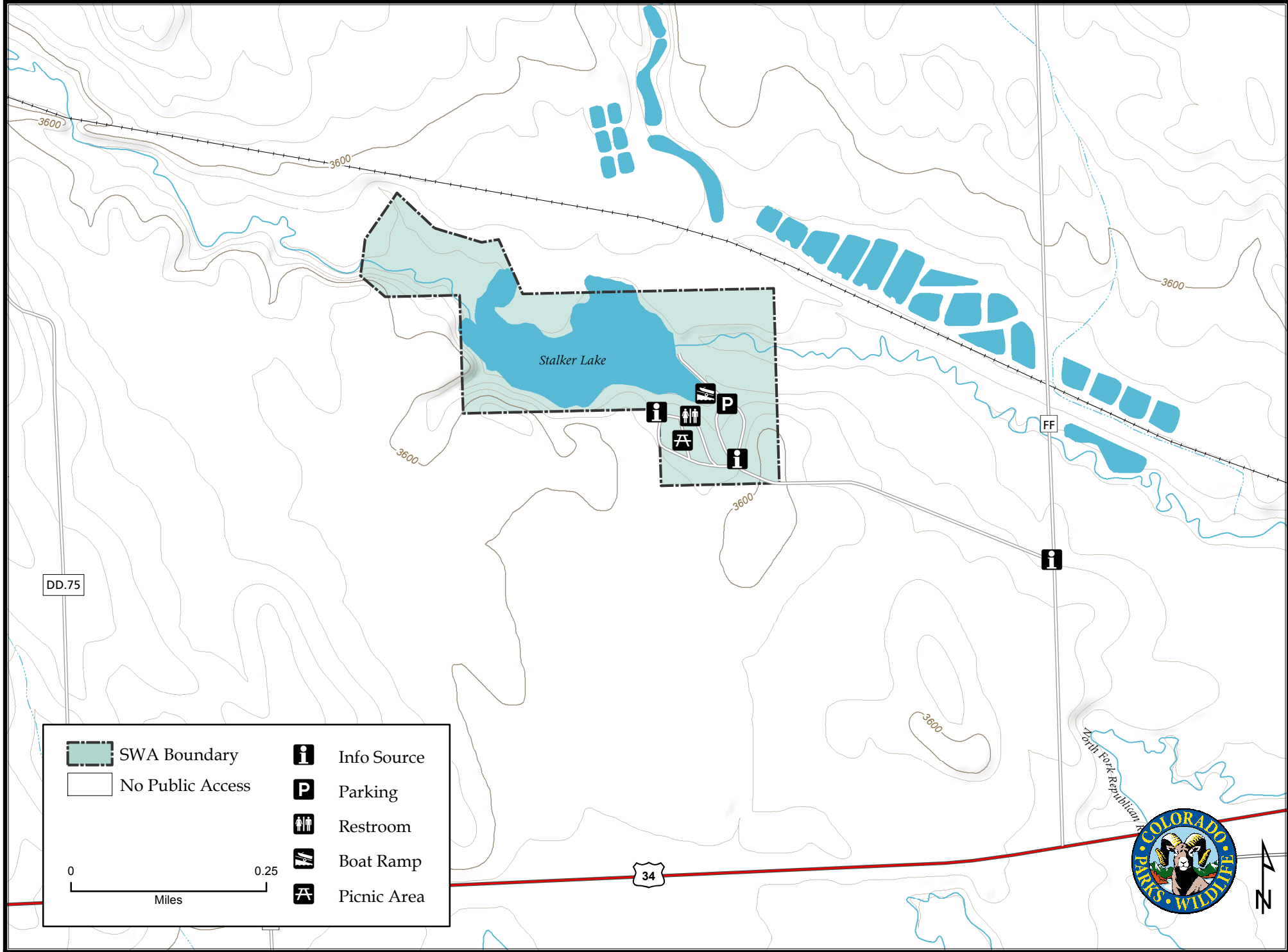
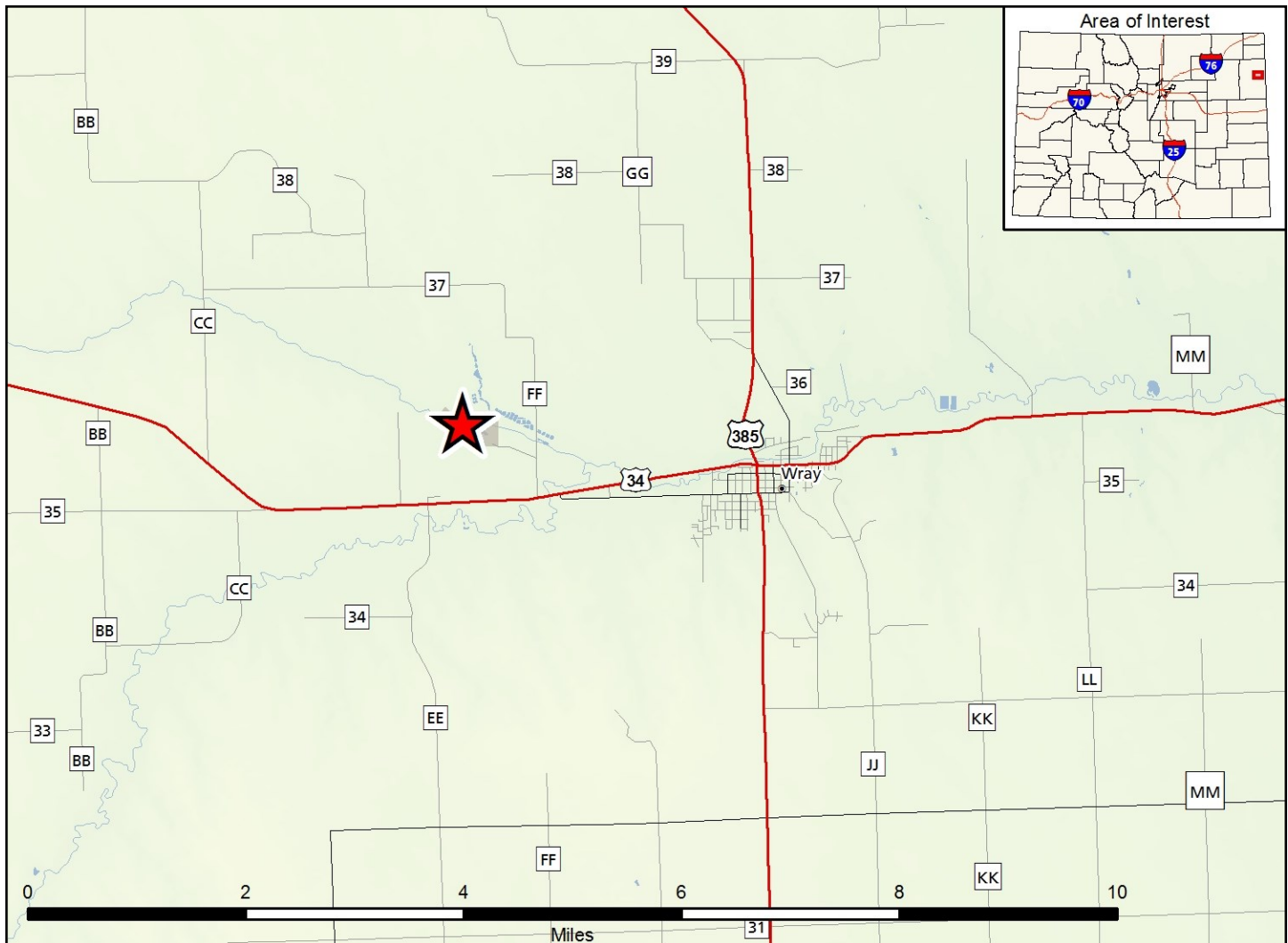


Stalker Lake State Wildlife Area

Map Updated: 5/12/2017





Stalker Lake SWA - Yuma County

From Wray, go 2 miles West on Hwy. 34 to CR FF, then go 1.5 miles North to access road, then 0.5 of a mile West.

Wildlife Area Offers:

Hunting: Pheasant, Bobwhite Quail, Dove, Waterfowl

Fishing: Coldwater and Warmwater Lake

Recreation: Restrooms, Boat Ramp, Picnic Shelters

- D. Discharge of firearms or bows is prohibited, except shotguns with birdshot, or bows may be used while hunting.
- E. Vessel use is prohibited, except for launching and use of vessels that are propelled by hand or electric motor.

Regulations:

In addition to or in place of those restrictions listed in regulation #900 the below listed provisions or restrictions apply (see Ch. 9, <http://cpw.state.co.us/aboutus/Pages/Regulations.aspx>).

- A. After October 31, hunting is prohibited, except in areas east of Stalker Lake dam.
- B. Hunting on the western half of Stalker Lake is prohibited.
- C. Discharge of firearms or bows is prohibited, except for bows on the designated archery range.

More Information:

CPW Office (Brush): (970) 842—6300

CPW Website: <http://cpw.state.co.us>