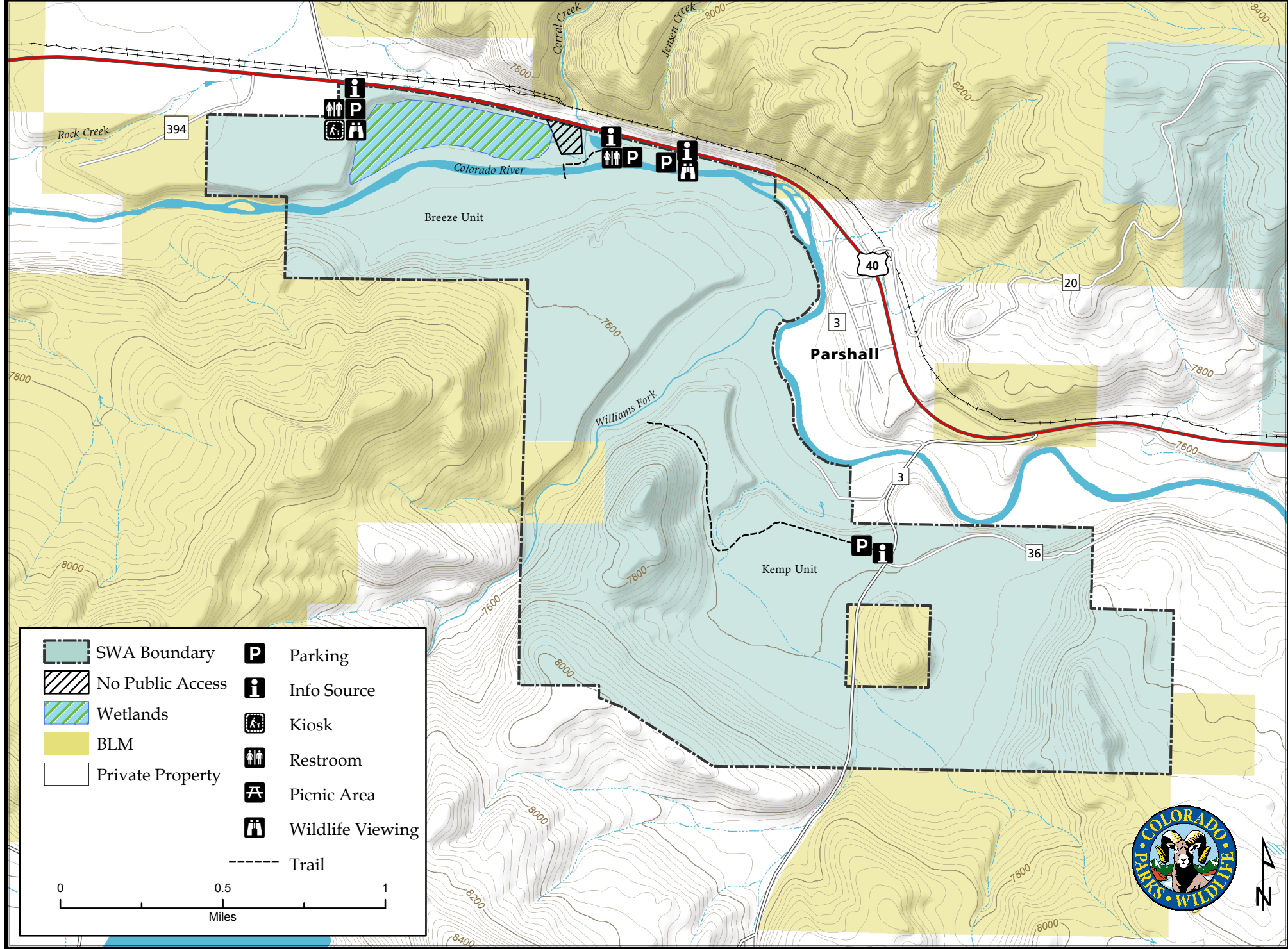
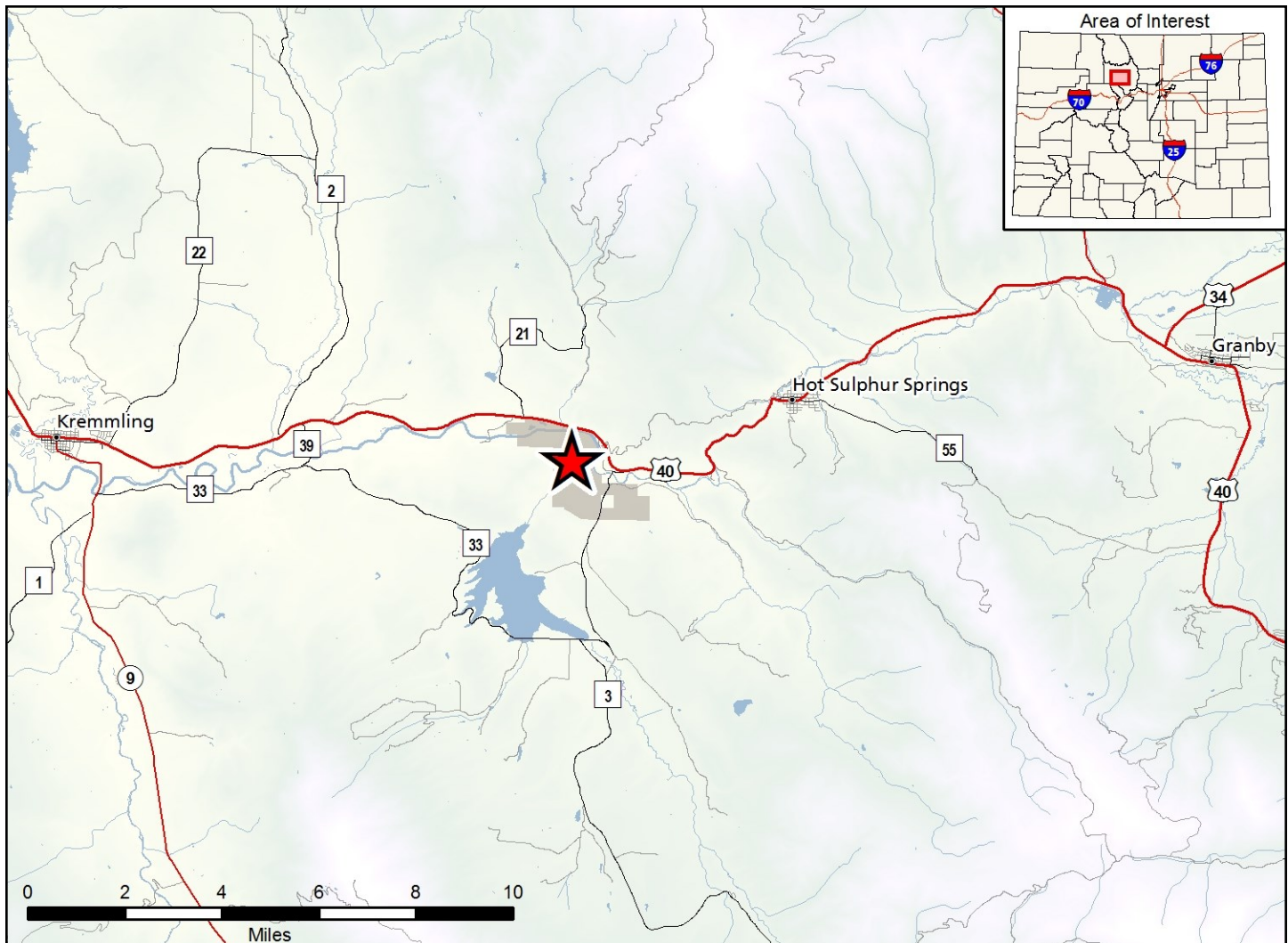


# Kemp Breeze State Wildlife Area

Map Updated: 12/4/2017





### Kemp-Breeze SWA - Pioneer Park - Grand County

**Breeze Unit:** About 15 miles west of Granby on Highway 40 past Parshall; go 1/2 mile. Look for mile marker 196. Turn left 1/4 mile past marker for parking or go west 3/4 mile for more parking. Unit is 11.5 miles west of Kremmling. **Kemp Unit:** From Granby, go 14.5 miles west on Highway 40; turn left on County Road 3 and go over the Colorado River bridge. Turn right on the second road or go another 1/2 mile and turn right for

#### Wildlife Area Offers:

Hunting: Deer, Elk, Small Game, Waterfowl

Fishing: Coldwater Stream

Recreation: Wildlife Viewing

#### Regulations:

*In addition to or in place of those restrictions listed in regulation #900 the below listed provisions or restrictions apply (see Ch. 9, <http://cpw.state.co.us/aboutus/Pages/Regulations.aspx>).*

- A. Public access on the Breeze Unit hay meadow wetland is prohibited from March 15 through July 15.
- B. Fishing at the Breeze Unit Kids Pond is restricted to youth fishing only and those anglers with mobility impairments.
- C. Dogs are allowed but must be kept under control on a physical leash by the handler at all times except as authorized in #900(C)(15).

#### More Information:

CPW Office (Sulphur Springs): (970) 725 - 6200

CPW Website: <http://cpw.state.co.us/>