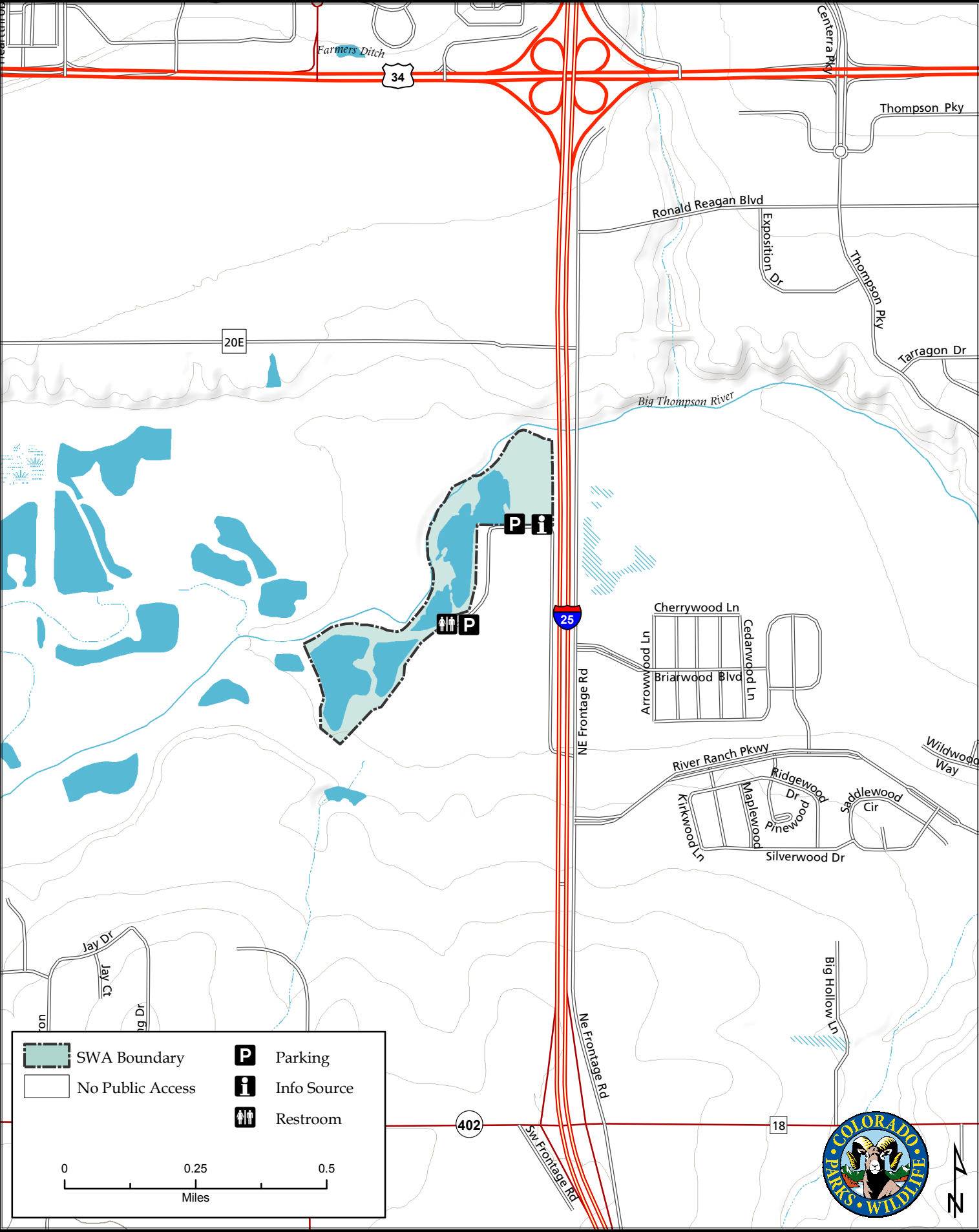
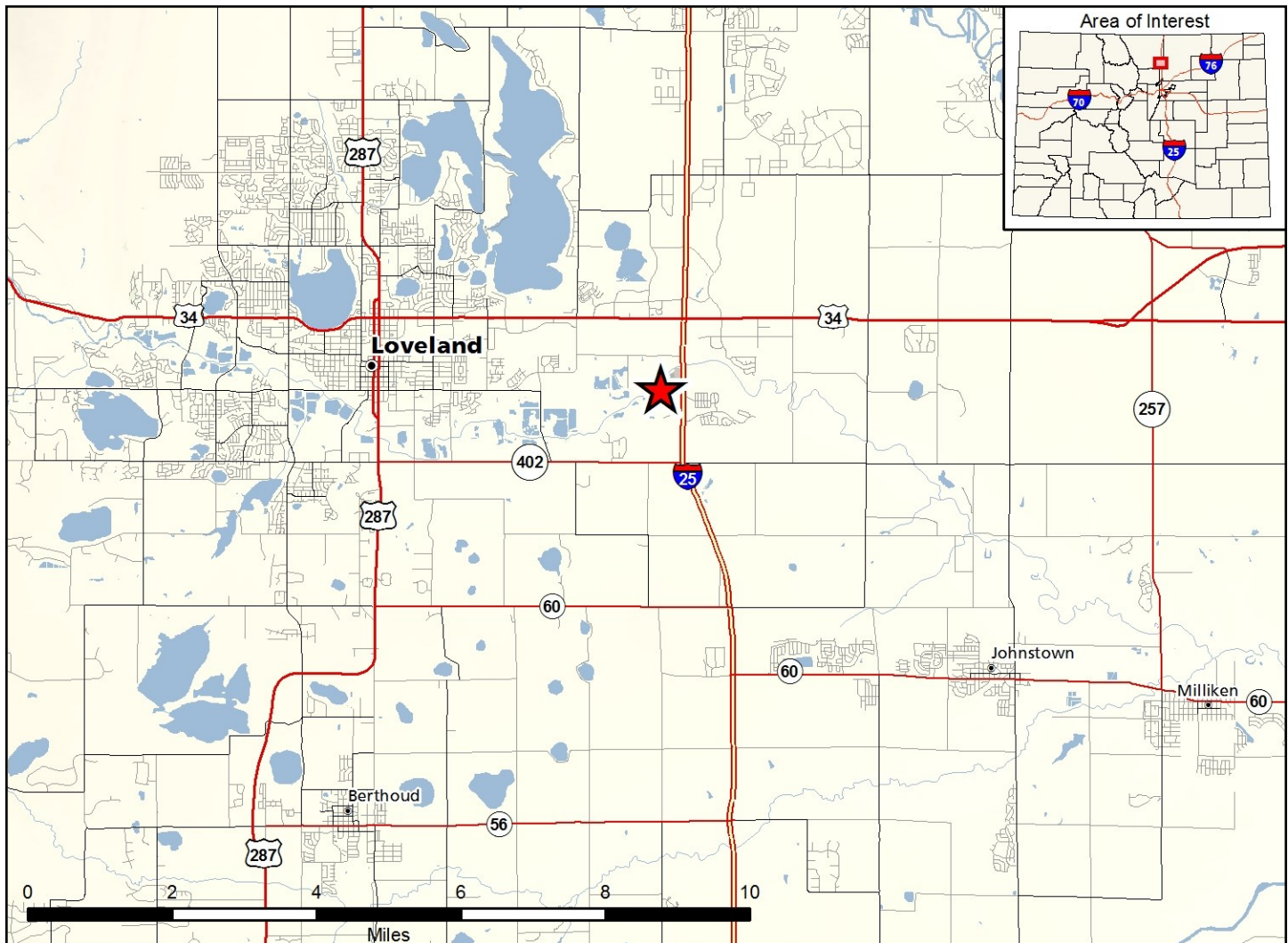


Big Thompson Ponds State Wildlife

Map Updated: 3/7/2017





Big Thompson Ponds SWA - Larimer County

From Interstate 25 at the Highway 402 exit (Exit 255), take the east frontage road north 3/4 mile to the underpass, cross west (left) under I-25 and go north (right) on the west frontage road to the property.

Wildlife Area Offers:

Fishing: Warmwater

Hunting: Rabbit, Dove, Waterfowl

Recreation: Wildlife Viewing, Picnicking

- C. Discharge of firearms or bows is prohibited, except while hunting or bowfishing.
- D. Horse use is prohibited.
- E. Bicycles are prohibited.
- F. Dog training and field trials are prohibited.

Regulations:

In addition to or in place of those restrictions listed in regulation #900 the below listed provisions or restrictions apply (see Ch. 9, <http://cpw.state.co.us/aboutus/Pages/Regulations.aspx>).

- A. Public access is prohibited from one (1) hour after sunset to one (1) hour before sunrise daily, except while fishing or when authorized by a night hunting permit.
- B. Vessel use is prohibited, except for hand-launched vessels that are propelled by hand when used as an aid for fishing or hunting.

More Information:

CPW Office (Denver): (303) 291-7227

CPW Website: <https://cpw.state.co.us/>