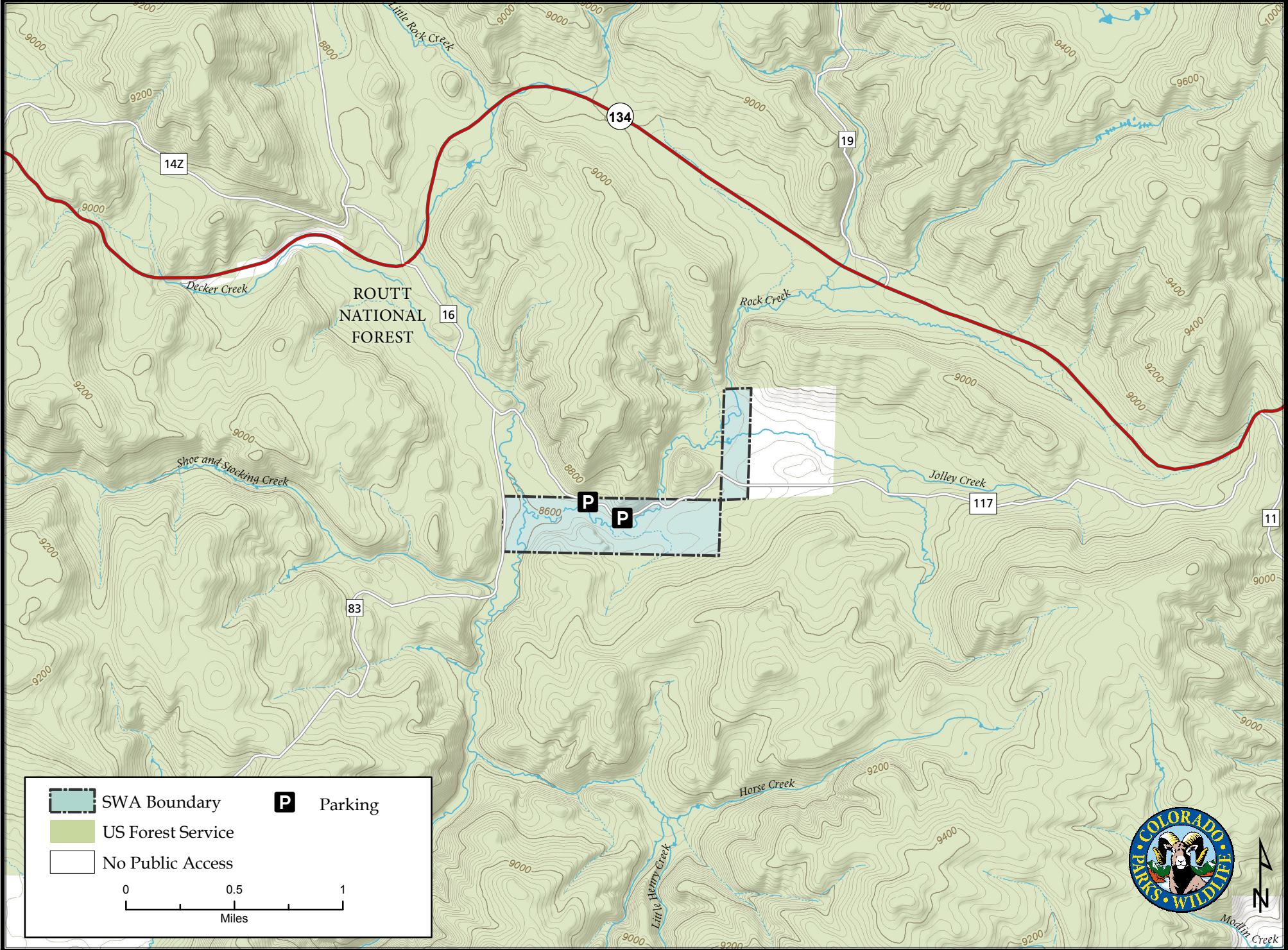
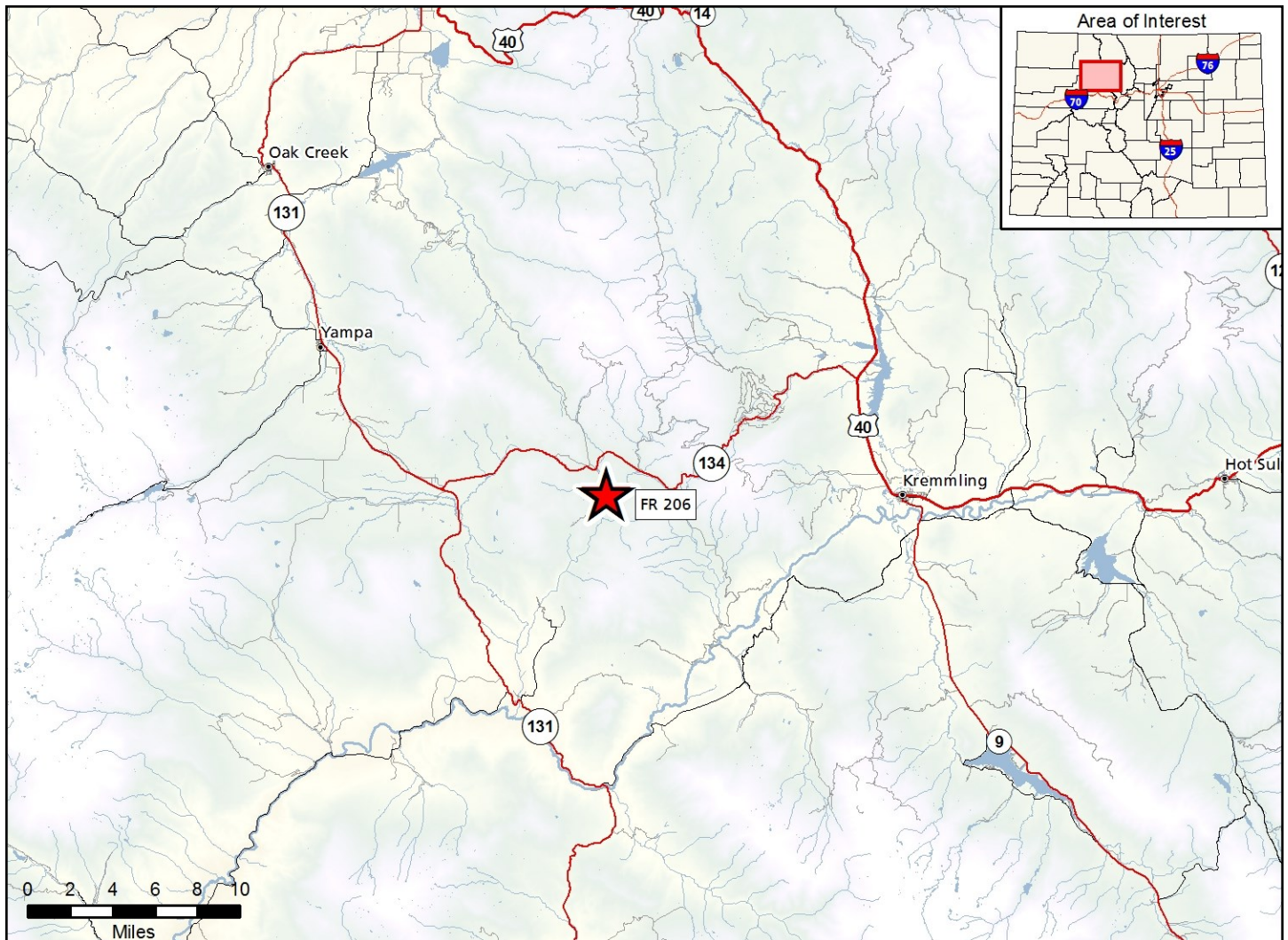


Rock Creek State Wildlife Area

Map Updated: 11/29/2017





Rock Creek SWA - Routt County

From Kremmling, go 6 miles north on US Highway 40 to Highway 134, then west (left) over Gore Pass (elevation 9,527 feet) 14 miles to Forest Road 206, and then south (left) 2 miles to the property.

Wildlife Area Offers:

Hunting: Elk, Deer Black Bear
 Fishing: Coldwater Stream
 Recreation: Wildlife Viewing

Regulations:

In addition to or in place of those restrictions listed in regulation #900 the below listed provisions or restrictions apply (see Ch. 9, <http://cpw.state.co.us/aboutus/Pages/Regulations.aspx>).

- A. Camping is allowed.
- B. Fires are allowed within an established containment structure.

More Information:

CPW Office (Sulphur Springs): (970) 725 - 6200
 CPW Website: <http://cpw.state.co.us/>