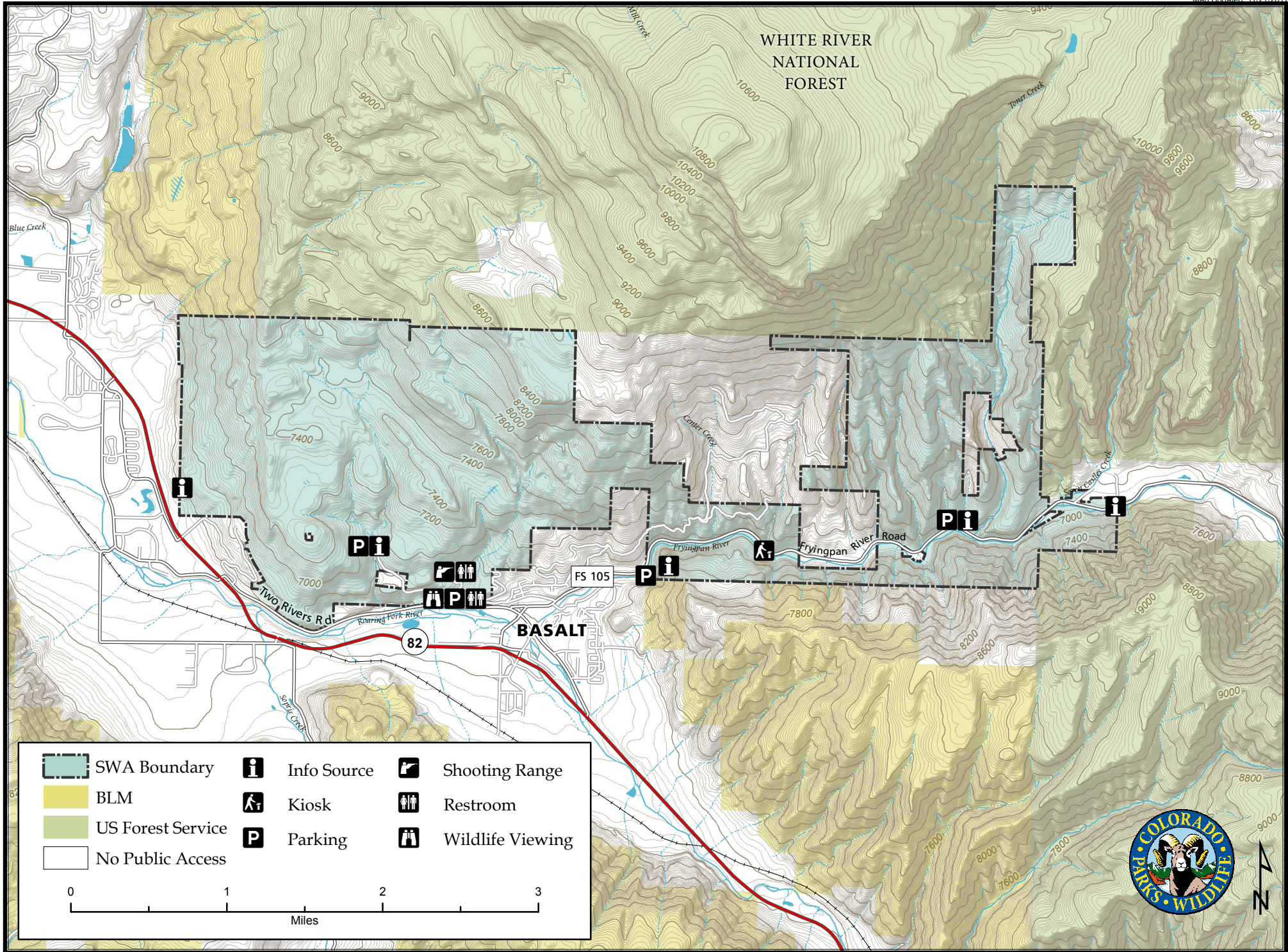
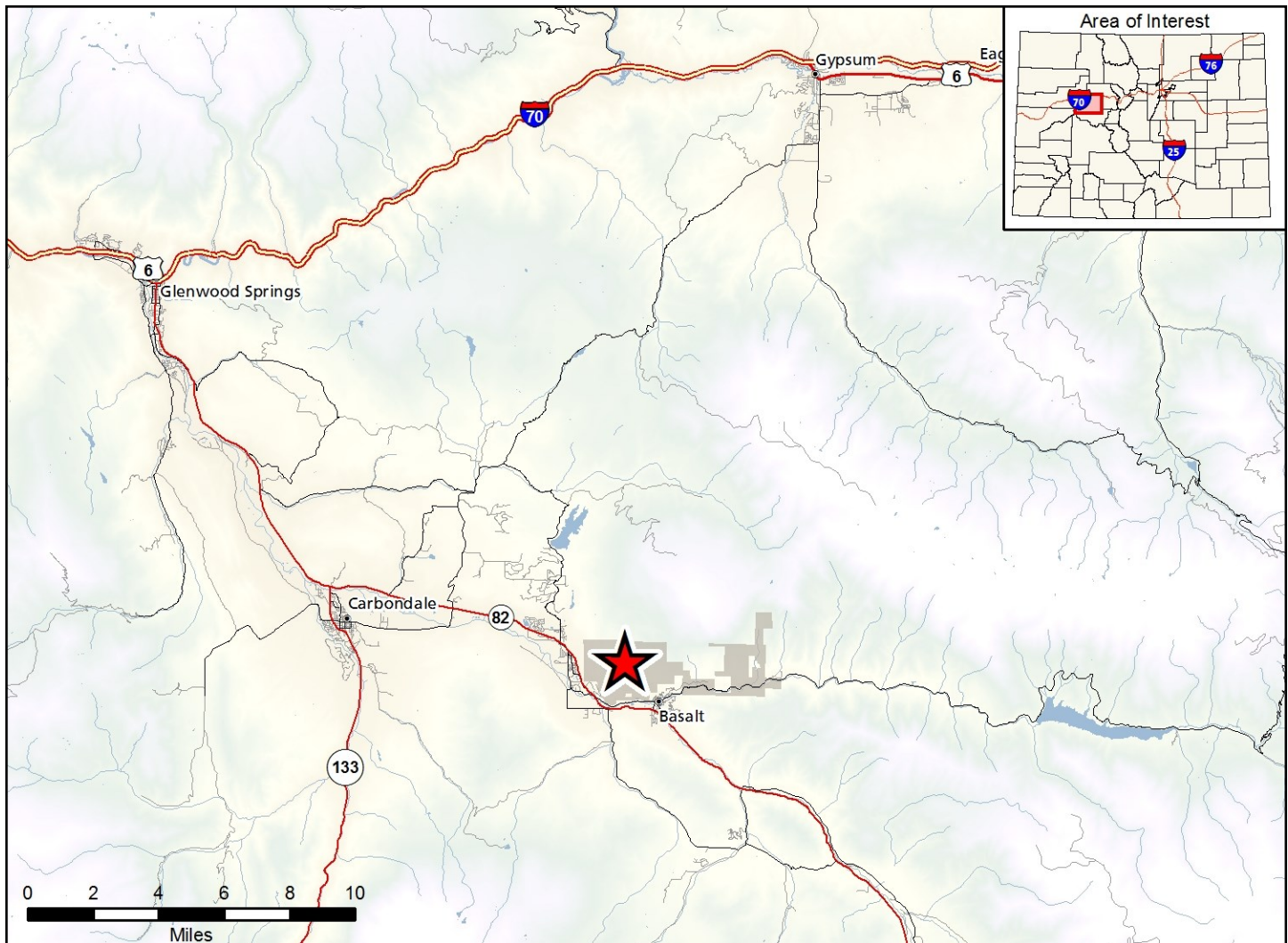


Basalt State Wildlife Area

Map Updated: 11/21/2017





Basalt SWA - Eagle & Pitkin Counties

From Basalt, go 3 miles east on Forest Road 105 (Fryingpan River Road) to the property entrance on the left. The area is well-marked with signs.

Wildlife Area Offers:

| | |
|-------------|---|
| Hunting: | Deer, Elk, Bighorn Sheep, Dusky (blue) Grouse |
| Fishing: | Coldwater Stream, Coldwater Lake |
| Recreation: | Picnicking, Wildlife Viewing |

Regulations:

In addition to or in place of those restrictions listed in regulation #900 the below listed provisions or restrictions apply (see Ch. 9, <http://cpw.state.co.us/aboutus/Pages/Regulations.aspx>).

- A. From March 15 through October 14, firearms may only be discharged on the shooting range on Monday, Tuesday, Thursday, and Friday from 7:00 a.m. until 7:00 p.m., and on Saturday and Sunday from 9:00 a.m. until 5:00 p.m. From October 15 through March 14, firearms may only be discharged on the shooting range on Monday, Tuesday, Thursday, and Friday from 9:00 a.m. until 4:00 p.m., and on Saturday and Sunday from 9:00 a.m. until 4:00 p.m.

- B. With the exception of Christine Lake and the Basalt Shooting Range, public access is prohibited from December 1 through July 15, except while spring turkey hunting.
- C. Discharge of firearms or bows is prohibited, except while hunting or on the designated shooting range.
- D. Vessel use is prohibited.
- E. Camping is allowed by licensed hunters during an established big game or turkey season plus three (3) days before and three (3) days after each season.
- F. Camping is prohibited within one-quarter (1/4) mile of the Frying Pan River.
- G. Dogs are prohibited.

More Information:

CPW Office (Glenwood Springs): (970) 947-2920
CPW Website: <http://cpw.state.co.us/>