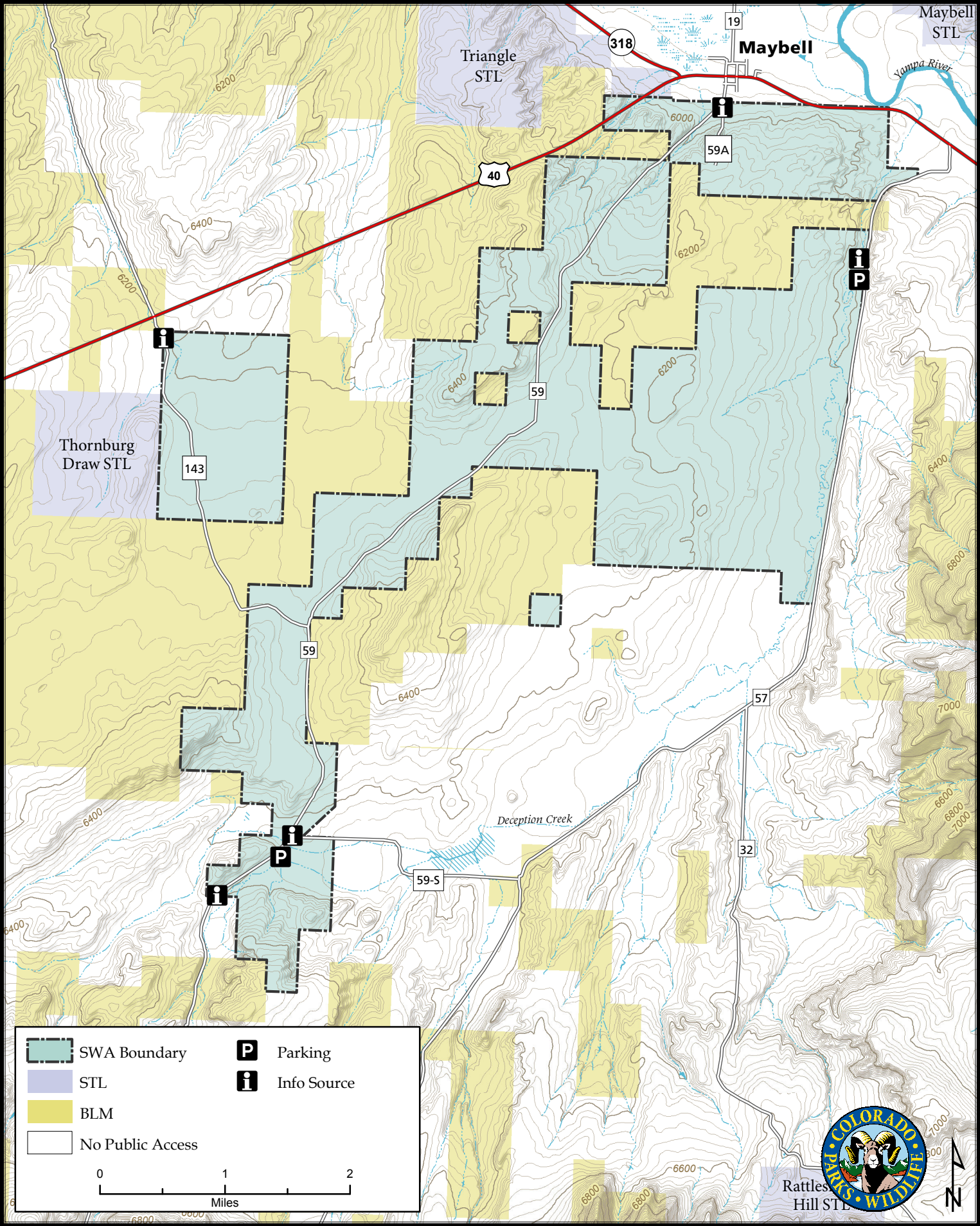
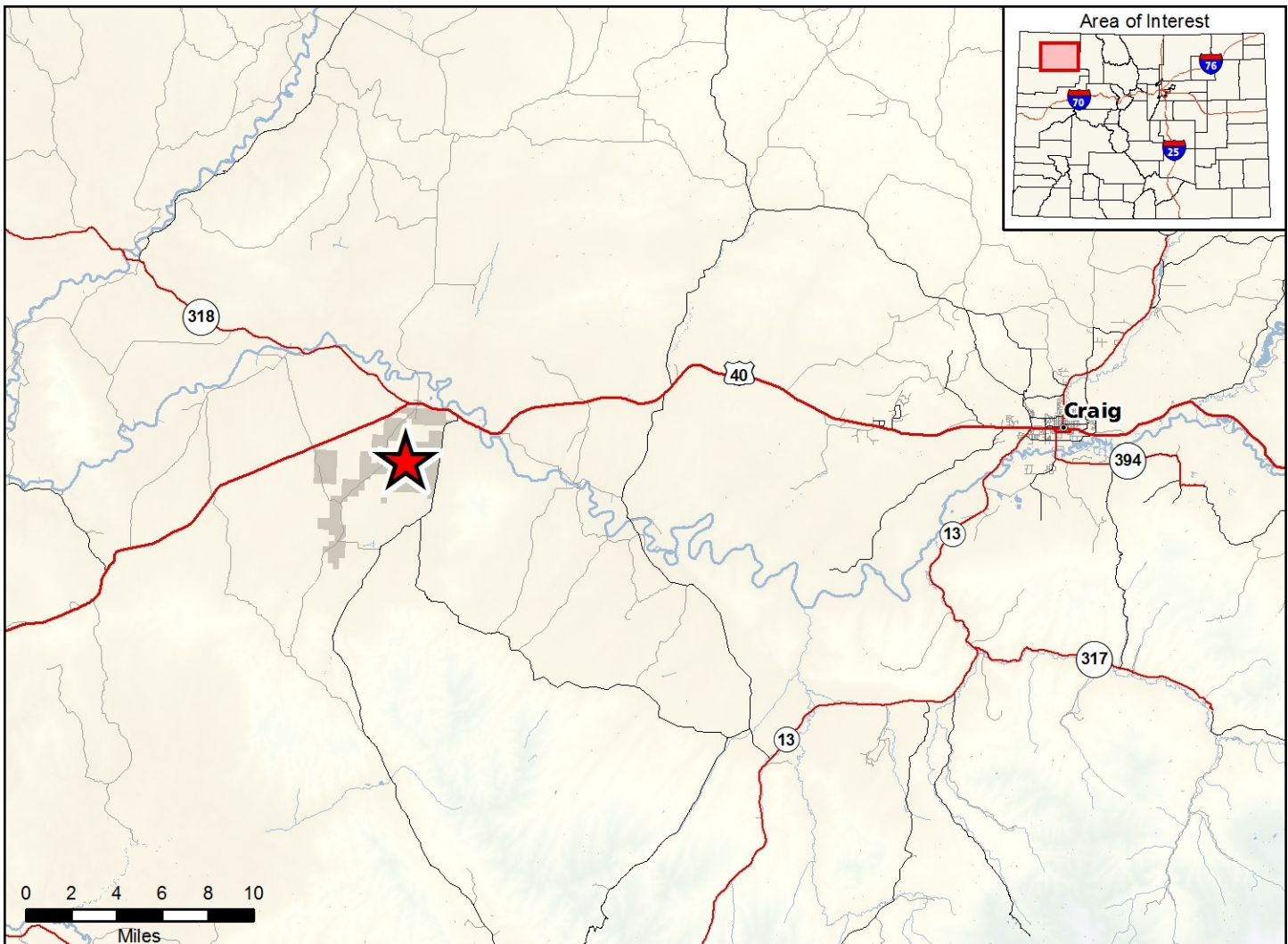


# Bitter Brush State Wildlife Area

Map Updated: 9/19/2017





### Bitter Brush SWA - Moffat County

From Craig, go 27 miles west on U.S. highway 40 to Moffat County Road 57, then one mile south (left) to the first parking area. Other access points: Moffat CR 59S off of CR 57; Moffat CR 59 out of Maybell; Moffat CR 143 off of Hwy 40.

#### Wildlife Area Offers:

Hunting: Elk, Deer and Antelope

Recreation: Wildlife Viewing

#### Regulations:

*In addition to or in place of those restrictions listed in regulation #900 the below listed provisions or restrictions apply (see Ch. 9, <http://cpw.state.co.us/aboutus/Pages/Regulations.aspx>).*

- A. Public access is prohibited from January 15 through April 30.
- B. Motor vehicle access is restricted to Moffat Co Rds 59 and 143.
- C. The placing of any portable blind, marker, stand or related structure is prohibited prior to August 1 annually and must be removed within 24 hours after harvesting an animal or within seven (7) days after the end of the archery pronghorn season, whichever comes first.

#### More Information:

CPW Office (Meeker): (970) 878-5240

CPW Website: <http://cpw.state.co.us/>