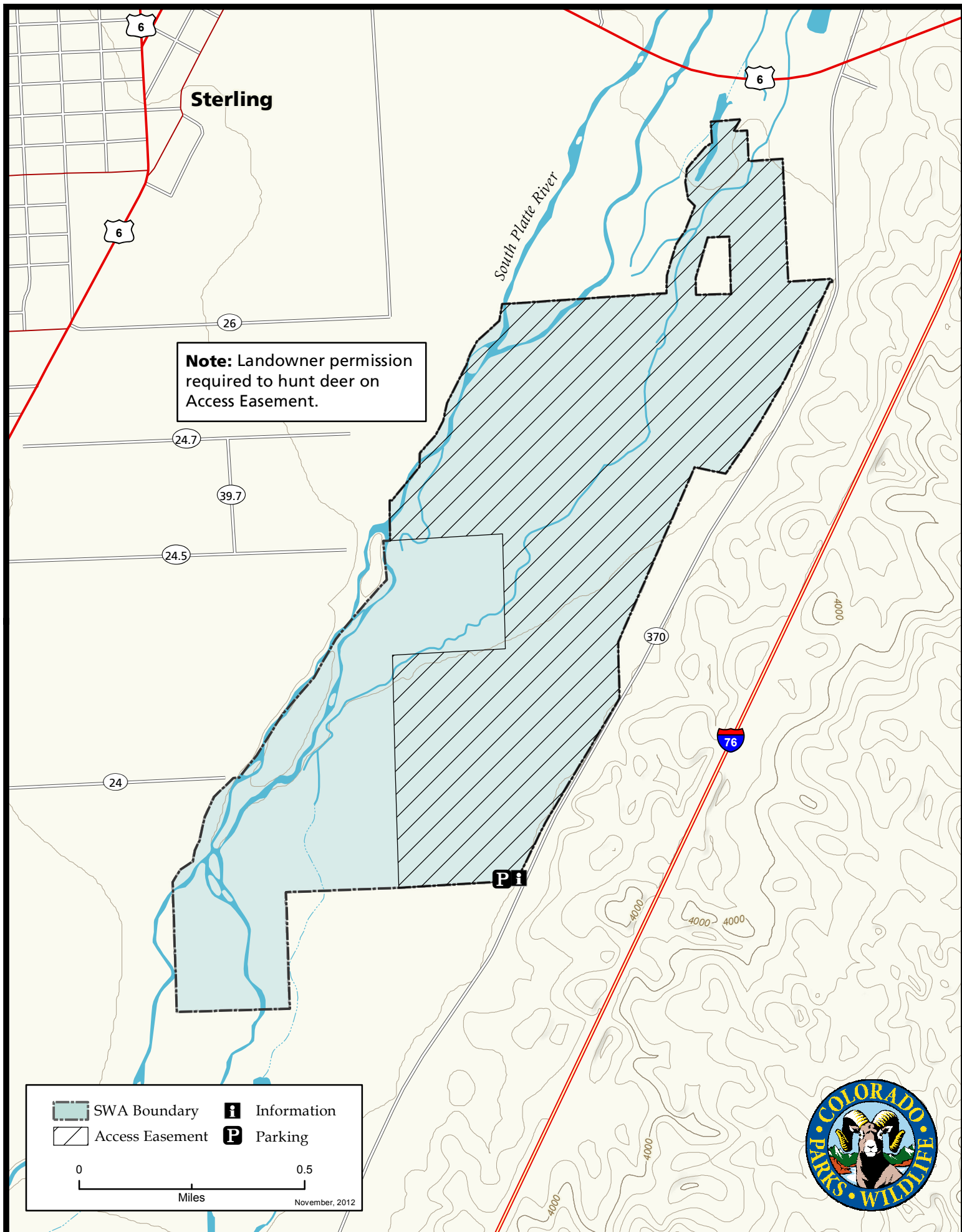
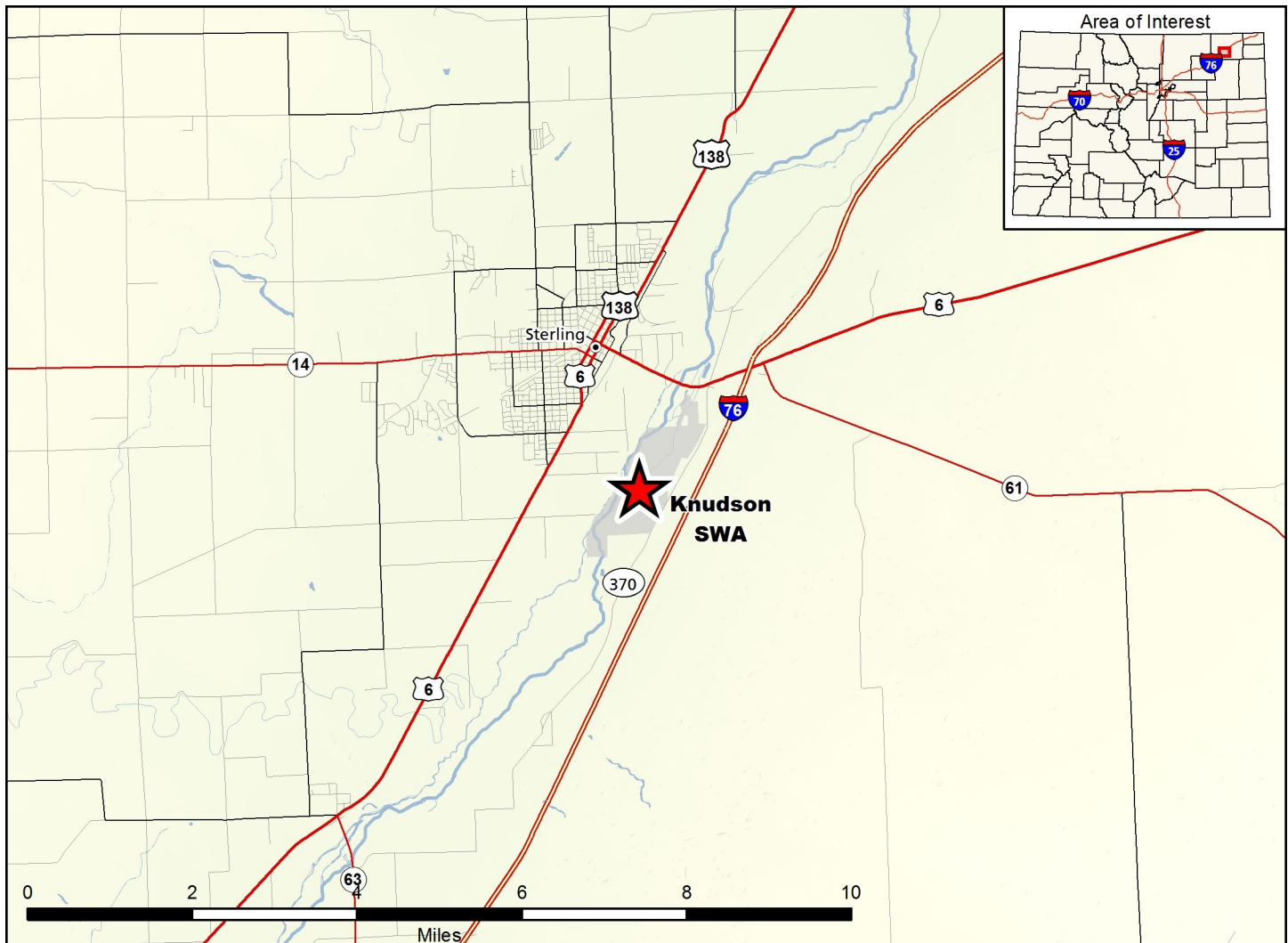


Knudson State Wildlife Area





Knudson SWA - Logan County

From Interstate 76 at the Sterling exit (Exit 125), go west 1/2 mile to County Road 370, and then 1 mile southwest (left) to the property.

Wildlife Area Offers:

Hunting: Deer, Squirrel, Pheasant, Bobwhite-
(GMU 96) Quail, Turkey, Waterfowl
Recreation: Hunting, Wildlife Viewing

- D. Discharge of firearms or bows is prohibited, except while hunting.
- E. Horse use is prohibited, except when used as an aid in hunting.
- F. The launching or takeout of vessels is prohibited during waterfowl seasons.

Regulations:

In addition to or in place of those restrictions listed in regulation #900 the below listed provisions or restrictions apply (see Ch. 9, <http://cpw.state.co.us/aboutus/Pages/Regulations.aspx>).

- A. Public access is prohibited from 9:00 p.m. – 4:00 a.m.
- B. All recreational activities, except deer hunting, are prohibited on the opening weekend of the regular plains rifle deer season and on the opening day and first weekend of the late plains rifle deer season.
- C. Landowner permission required to hunt deer on access easement.

More Information:

CPW NE Office (Brush): (970) 842-6300
Website: <http://cpw.state.co.us/>