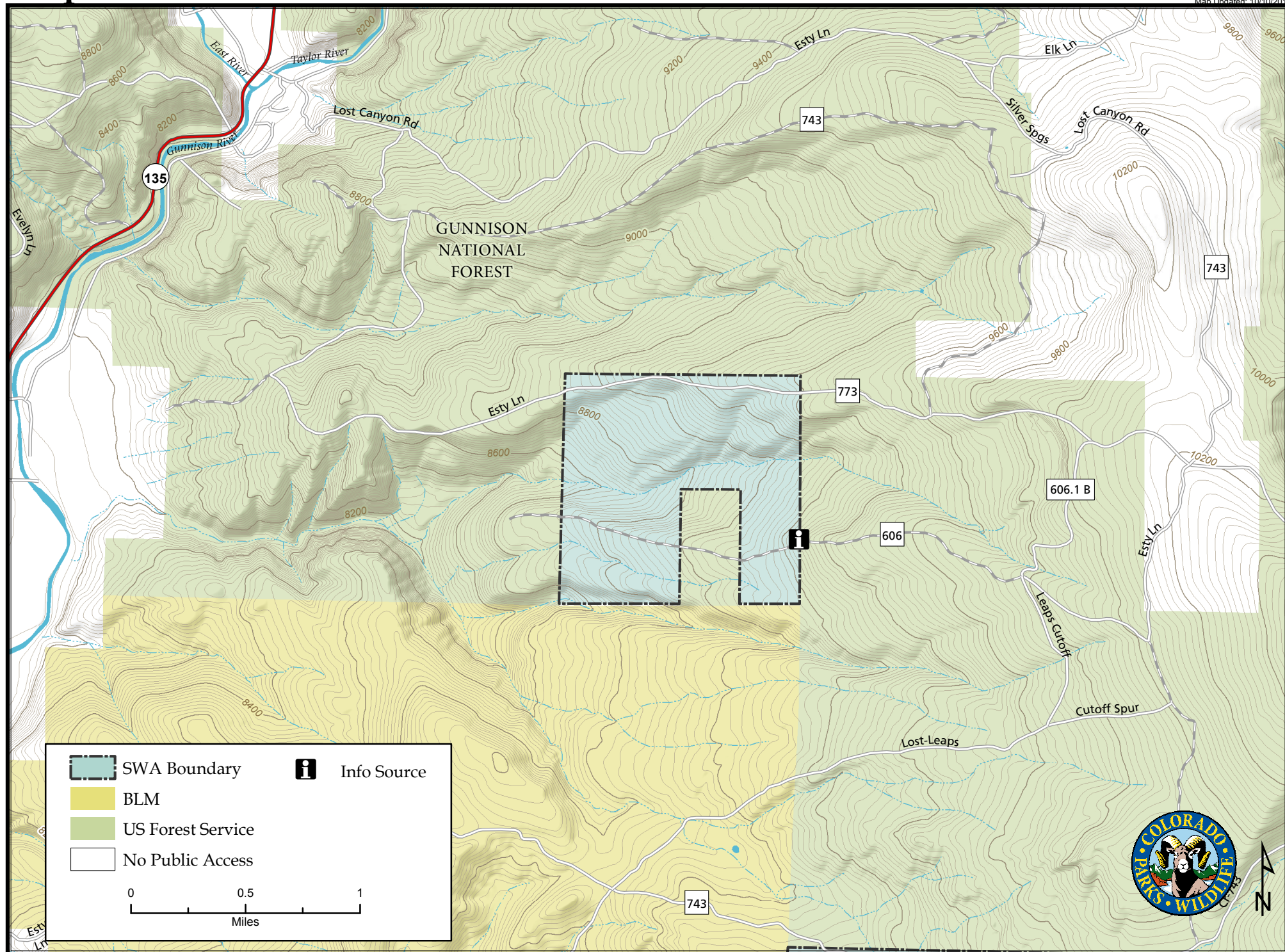
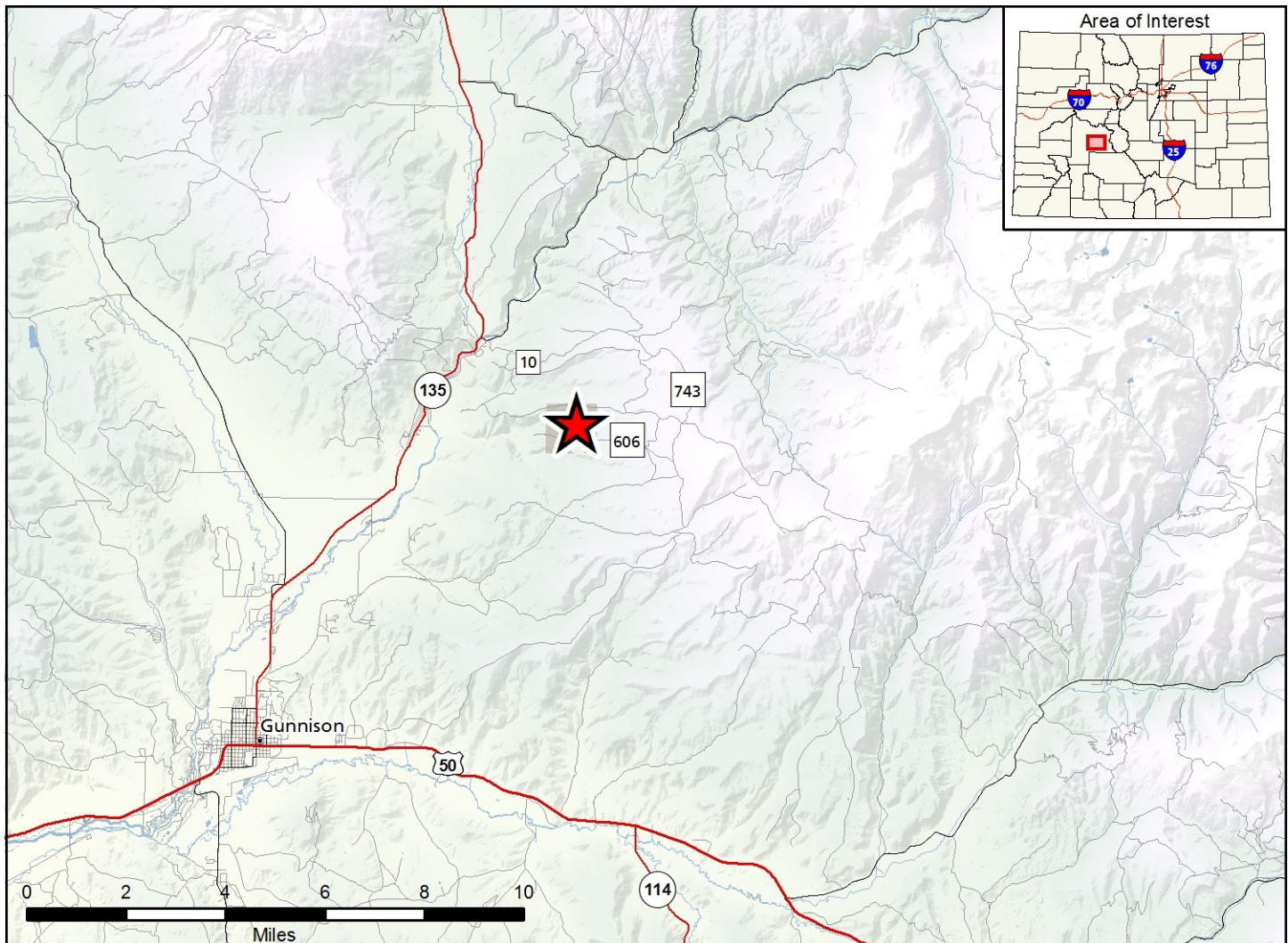


Map Updated: 10/10/2018





Leaps Gulch SWA - Gunnison County

From Gunnison, go 2 miles north on Hwy 135 to CR 10 (Lost Canyon Rd), Then 9.5 miles east (right) to Forest Service Road 743.4b, Then 2.5 miles north to Forest Service Road 606.1b (2nd left). West 0.5 mile to property.

Wildlife Area Offers:

Hunting: Big Game

Recreation: Wildlife Viewing

Regulations:

In addition to those restrictions listed in regulation #900 the below listed provisions or restrictions apply (see Chapter 9, <http://cpw.state.co.us/aboutus/Pages/Regulations.aspx>).

This Division property has no specific regulations.

General provisions contained in regulation #900 apply.

More Information:

CPW Office (Gunnison): (970) 641 – 7060

CPW Website: <http://cpw.state.co.us>