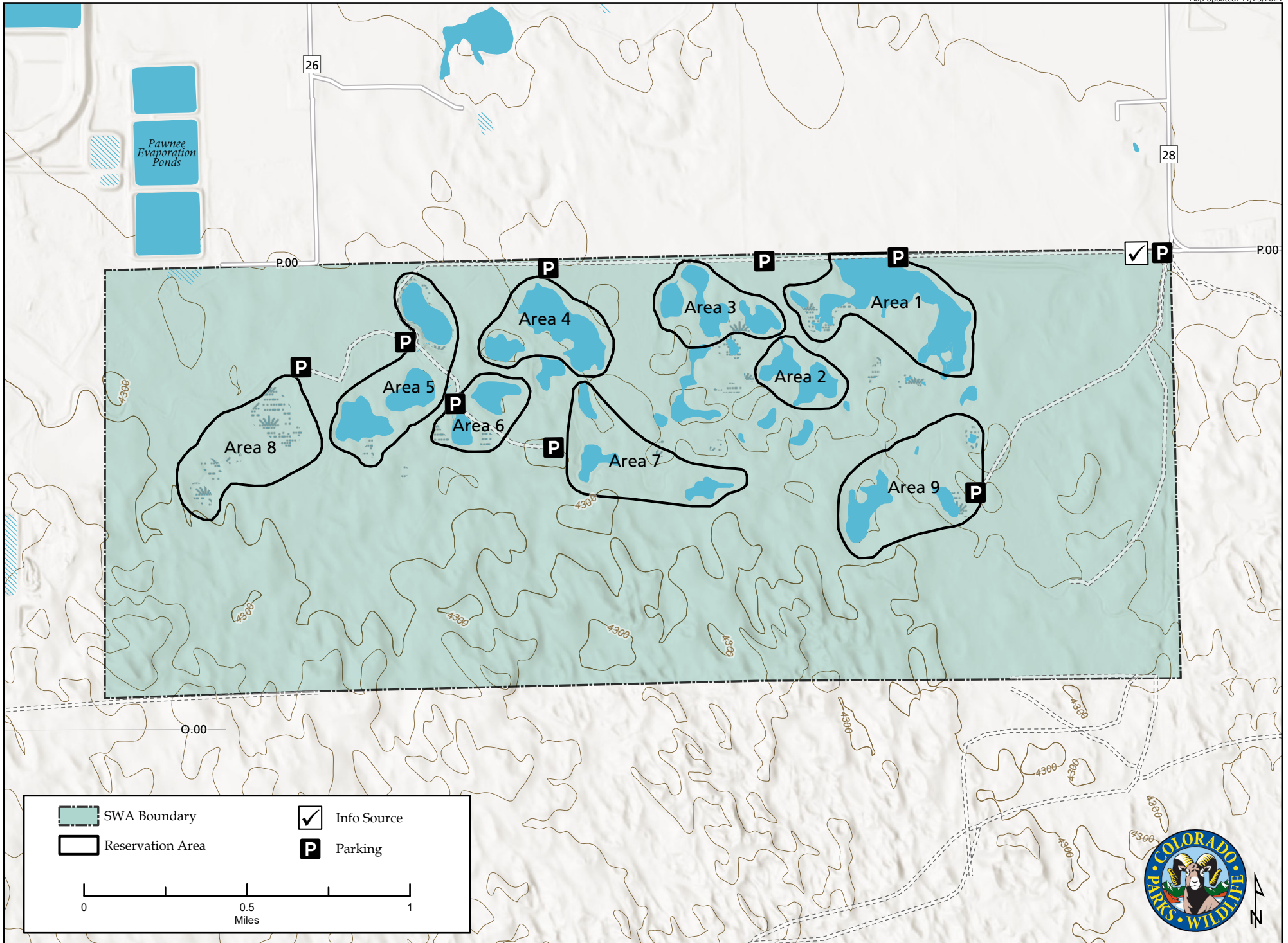
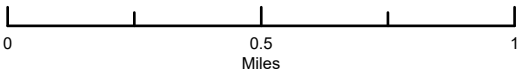


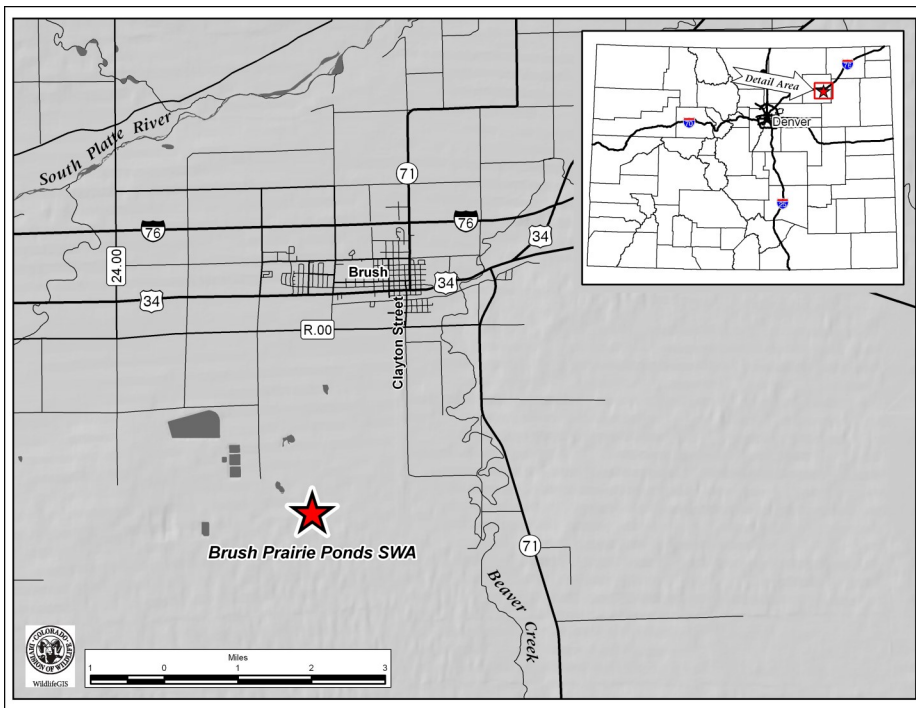
Brush Prairie Ponds State Wildlife Area

Map Updated: 11/25/2024



- SWA Boundary
- Info Source
- Reservation Area
- Parking





Brush Prairie Ponds SWA Morgan County

From Brush, go south on Clayton Street. The entrance to the hunting areas is 2 1/2 miles south of the Brush Memorial Park on Clayton Street (County Road 28).

More Information:

Wildlife Area Offers:

Hunting: Waterfowl, Pheasant,
(GMU 99) Rabbit, Deer

Recreation: Wildlife Viewing

CPW Office (Brush): (970) 842-6300

Website: <https://cpw.state.co.us/>

#901.A: On all Division properties which have reservations available or required, those reservations may be made by phone or online (cpw.state.co.us). Reservations for small game and waterfowl hunting may not be made more than 14 days in advance of the hunt date, nor after 12:00 noon on the day before the hunt date. Reservations for big game hunting may not be made more than 45 days in advance of the start of the season for which the reservation is being made. Unless otherwise specified, reservations for big game hunting are valid throughout the season designated by the license. Hunters who wish to cancel a reservation must do so no later than 12:00 noon on the day before the hunt date. Failure to hunt a reserved area without prior cancellation, or follow check station procedures, may cause forfeiture of the privilege to make reservations for the remainder of the hunting season. Hunters are limited to a maximum of one reservation per hunt date. Hunters must possess a valid license for the species to be hunted in order to make a reservation. Reservations are not transferable. The individual named on the reservation must be at the property on the day of the hunt. Hunters with reservations may only hunt the hunt area specified on the reservation. Any exceptions to the above restrictions will be listed under property specific regulations.

Regulations:

In addition to or in place of those restrictions listed in regulation #900 the below provisions or restrictions apply (see Chapter 9, <https://cpw.state.co.us/aboutus/Pages/regulations.aspx>).

- A. Public access is prohibited from 9:00 p.m.– 4:00 a.m.
- B. From September 1 through the dark goose season, only hunting allowed. Hunters must check-in and out at the check station.
- C. From September 1 through November 30, only migratory bird hunting within designated areas is allowed, and only on Saturdays, Sundays, Wednesdays, and state and federal holidays.

Reservations are required and valid until sunrise, and are limited to three (3) per hunter annually. Reservations must be made in accordance with #901.A of these regulations.

- D. Hunters may not check-in until 4:00 a.m. and can only hunt the area reserved or which they check into. Hunters may check-in on a first-come, first-serve basis after a hunter checks out or after sunrise if a hunter has not checked-in. Maximum of four (4) hunters and two (2) vehicles allowed per hunting area. 17
- E. From September 1 through November 30, scouting is prohibited, except on Thursdays from 10:00 a.m. – 2:00 p.m. All persons must check-in and out at the check station. All firearms and dogs are prohibited while scouting.
- F. From December 1 through the dark goose season, hunters may check-in on a first-come, first-serve basis after 4:00 a.m. or after a hunter checks out. Five (5) hunting areas are open for check-in. Hunters properly checked in may hunt anywhere on the property.
- G. Up to two (2) hunting areas are reserved each year for residents with a physical address of Brush, CO. Applications to enter the drawing are available at the CPW Brush Service Center in mid-August. Hunters must possess a valid license to hunt waterfowl to enter the drawing. Hunters may apply for one hunt area per day, but can list multiple requests on one application. Hunters successful in the drawing are required to comply with all hunting restrictions listed in regulation #901.A of these regulations.
- H. Discharge of a firearm or bow is prohibited, except while hunting.