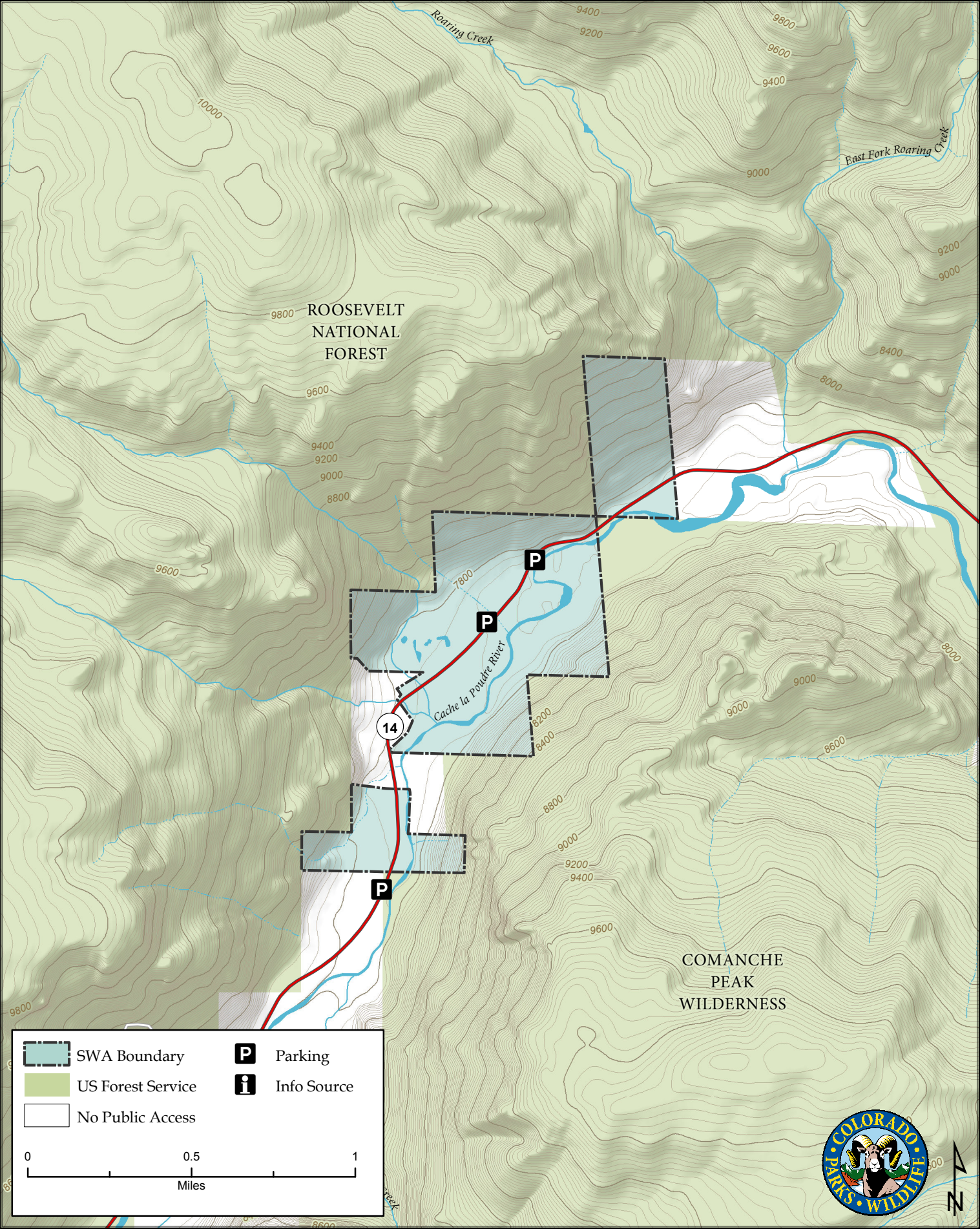
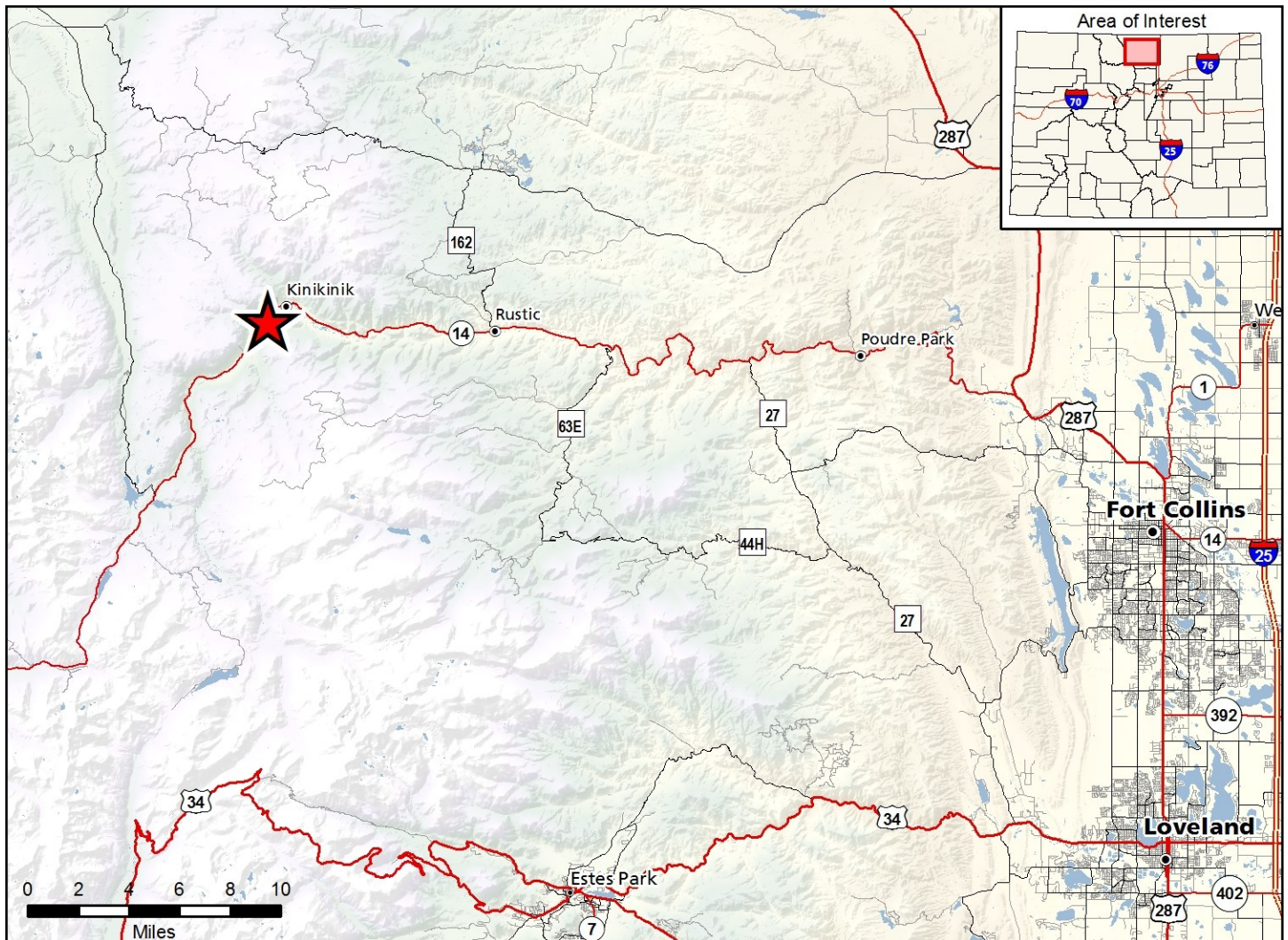


Bliss State Wildlife Area

Map Updated: 9/17/2019





Bliss SWA - Larimer County

From the intersection of Highway 287 and Highway 14 (Ted's Place) go 40 miles west on Highway 14 to the property. The property is divided into two parcels of land along the river. Look for the green and white CPW signs the boundaries.

Wildlife Area Offers:

Hunting:	Deer, Elk, Bighorn Sheep, Rabbit, Blue Grouse
Fishing:	Coldwater Stream
Recreation:	Wildlife Viewing

Regulations:

In addition to or in place of those restrictions listed in regulation #900 the below listed provisions or restrictions apply (see Chapter 9, <http://cpw.state.co.us/RulesRegs/Regulations/>).

A. Vessel use is prohibited.

More Information:

CPW Office (Fort Collins): (970) 472 - 4300

Website: <http://cpw.state.co.us/>