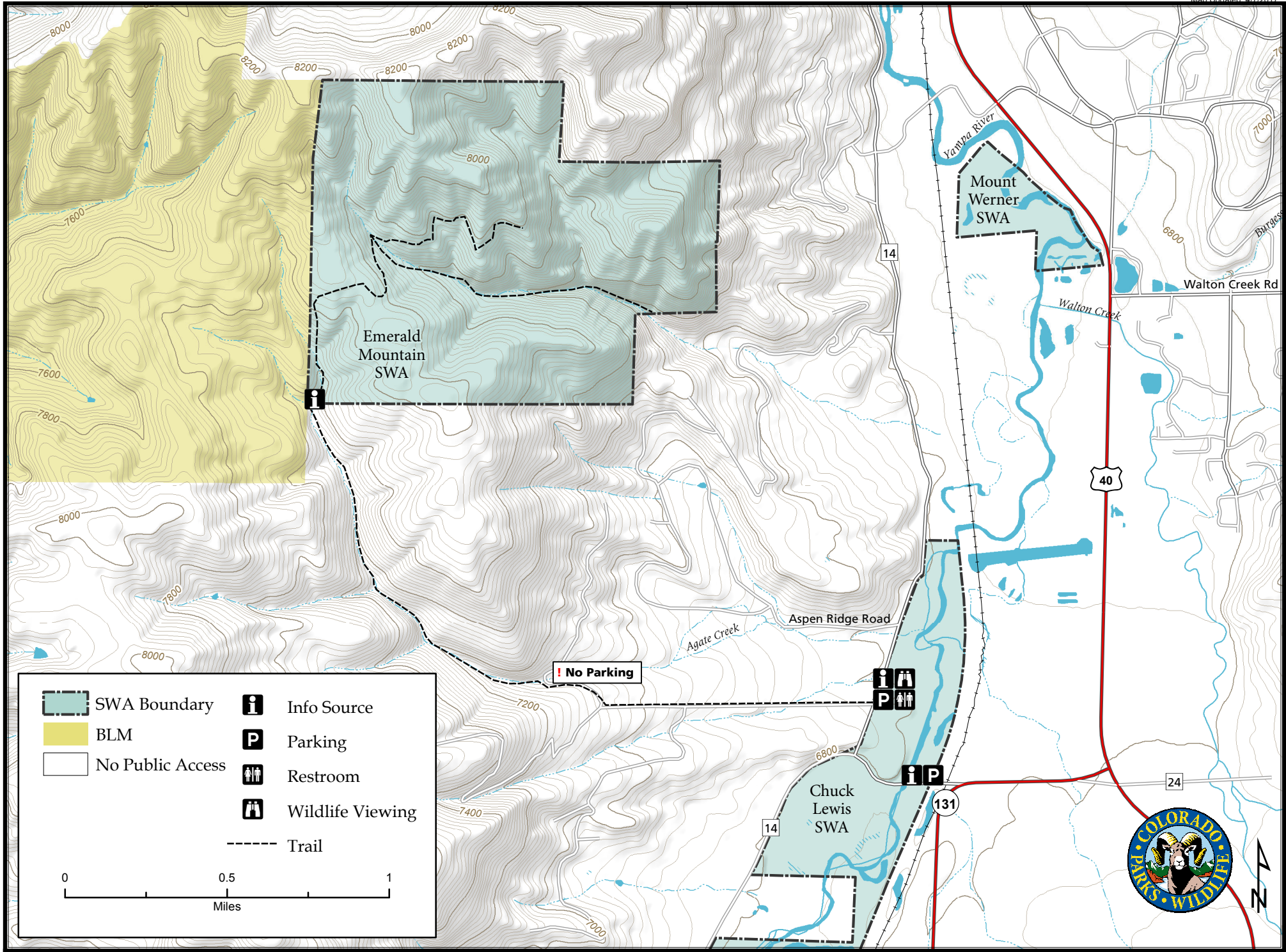
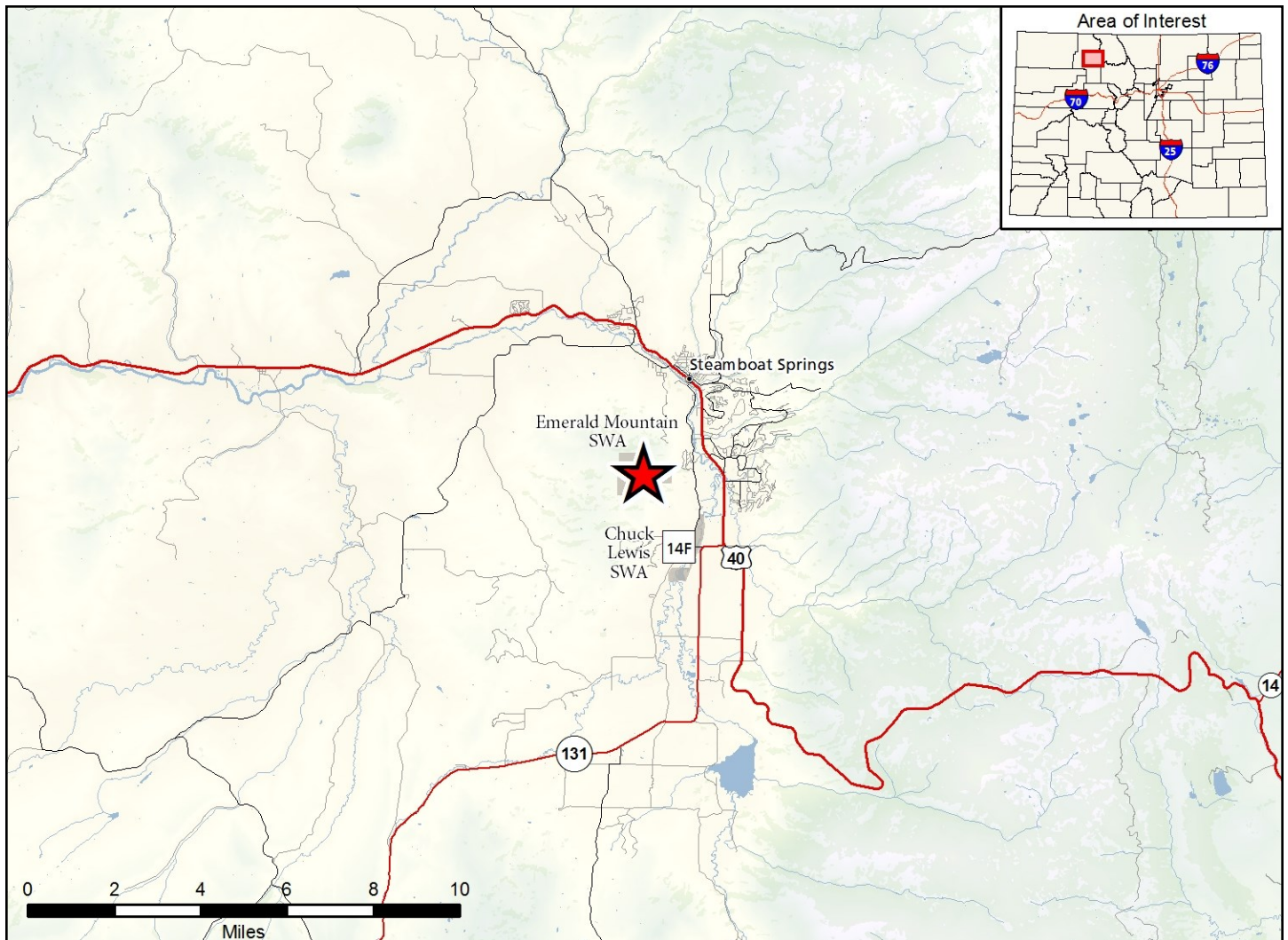


Emerald Mountain State Wildlife Area

Map Updated: 4/7/2017





Emerald Mountain SWA - Routt County

From HWY 40, go south on HWY 131 to CR14F. Take CR14F west to CR14. Go north to parking area. Emerald Mountain is accessed using a trail easement that begins at the Chuck Lewis parking lot. Orange posts mark the trail easement.

Wildlife Area Offers:

Hunting: Elk
(GMU 131)

Recreation: Wildlife Viewing

Regulations:

In addition to or in place of those restrictions listed in regulation #900 the below listed provisions or restrictions apply (see Ch. 9, <http://cpw.state.co.us/aboutus/Pages/Regulations.aspx>).

- A. Public access is prohibited from December 1 through July 15.
- B. Public access is prohibited from sunset to sunrise except while fishing.
- C. Public access is allowed by foot and horseback only.
- D. Discharge of firearms or bows is prohibited.
- E. Dogs are prohibited.

More Information:

CPW Office (Steamboat Springs): (970) 870-3333

CPW Website: <http://cpw.state.co.us/>