



GOCO UPDATE

PARKS & WILDLIFE COMMISSION

MAY 7, 2025



2025 STRATEGIC PLAN

OVERALL PLAN HIGHLIGHTS



\$400+ MILLION OVER 5 YEARS!

~\$103.5M per constitutional purpose



MISSION & VALUE ALIGNED OUTCOMES

Resource Conservation, Outdoor Stewardship, Community Vitality, Equitable Access, Youth Connections



COLORADO'S OUTDOORS STRATEGY

Elevating COS + RPI Special Initiative

MORE PLAN HIGHLIGHTS



GENERATION WILD

Grant Program + Communications Campaign



BASE PROGRAMS

Process + Program Changes



PARTNER PROGRAMS

Increased Investment

GOCO STRATEGIC PLAN 2025



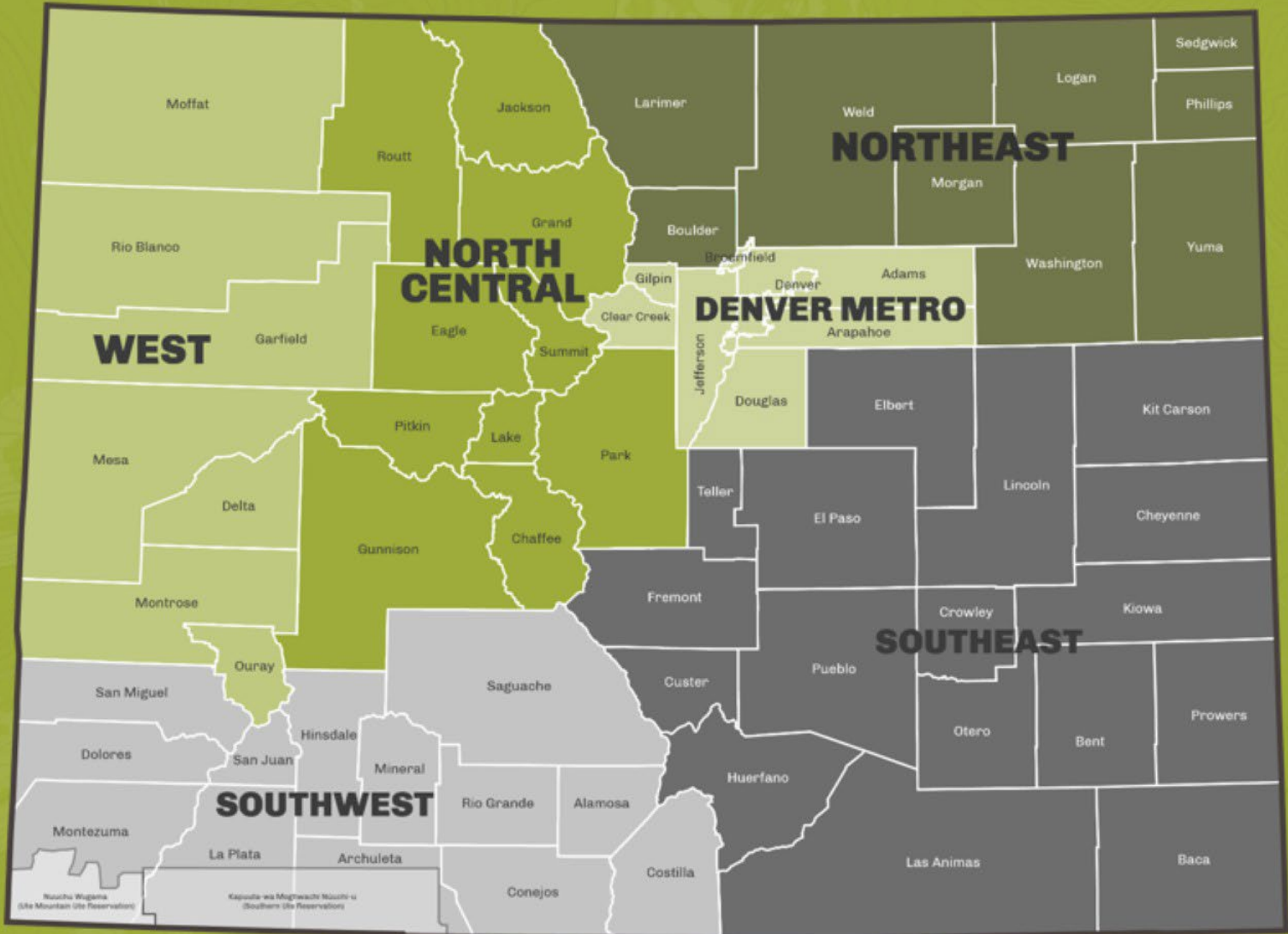
Scan me

www.goco.org/about/our-strategic-plan

The background of the slide is a topographic map with contour lines, rendered in a light green color against a darker green background. The map shows various elevation contours and geographical features.

GOCO SOUTHWEST REGION.

GOCO REGIONS.



DURANGO PARTNERSHIPS SOUTHWEST REGION

- GOCO Investment in Durango \$9.5M since 1992
- La Plata Open Space Conservancy



Animas Greenway Trail



Oxbow Park and Preserve

OPEN SPACE

3,000 Acres City Owned

GOCO contribution:
\$1.64M for 705 acres of
Fee Acquisition and
Conservation Easements

Wildlife Closures and
Habitat Management.

CPW Wildlife Review

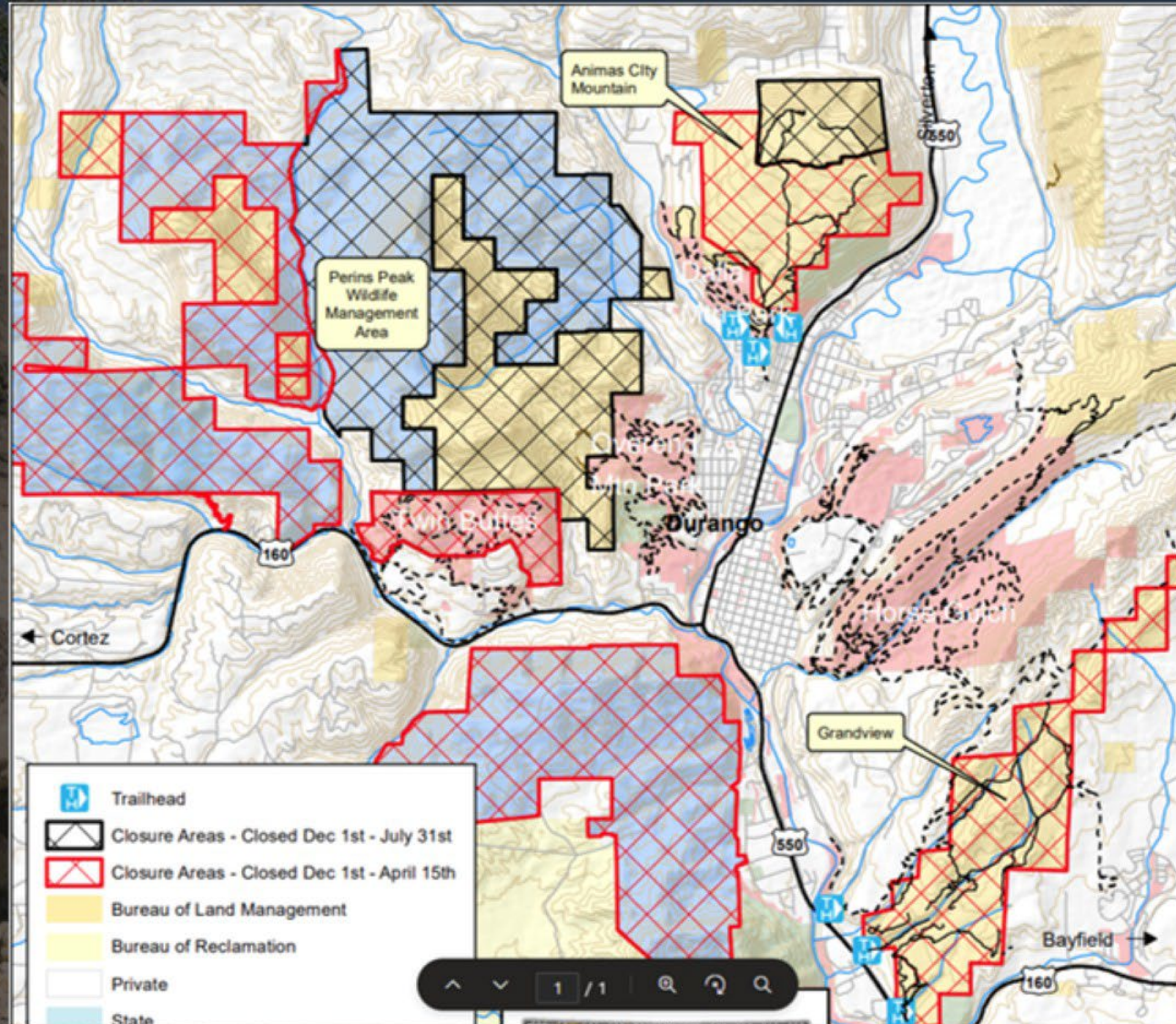


Image: Bureau of Land Management

TRIBAL ENGAGEMENT

SOUTHWEST REGION AND STATEWIDE



Artist Credit: Tamara Layden

Guidance Framework for Tribal Collaboration



Photo: Montezuma Land Conservancy

Preserving Culture and Enhancing Habitat Resilience through Traditional Harvest

A topographic map overlay is visible at the top of the slide, showing contour lines and a shaded area representing a geographical region. The background of the slide is a photograph of a mountain landscape with a dense forest of evergreen trees in the foreground and rocky peaks in the distance.

ONWARD!

- Director's Innovation Fund
- GOCO Board Meeting
- Colorado's Outdoors Strategy