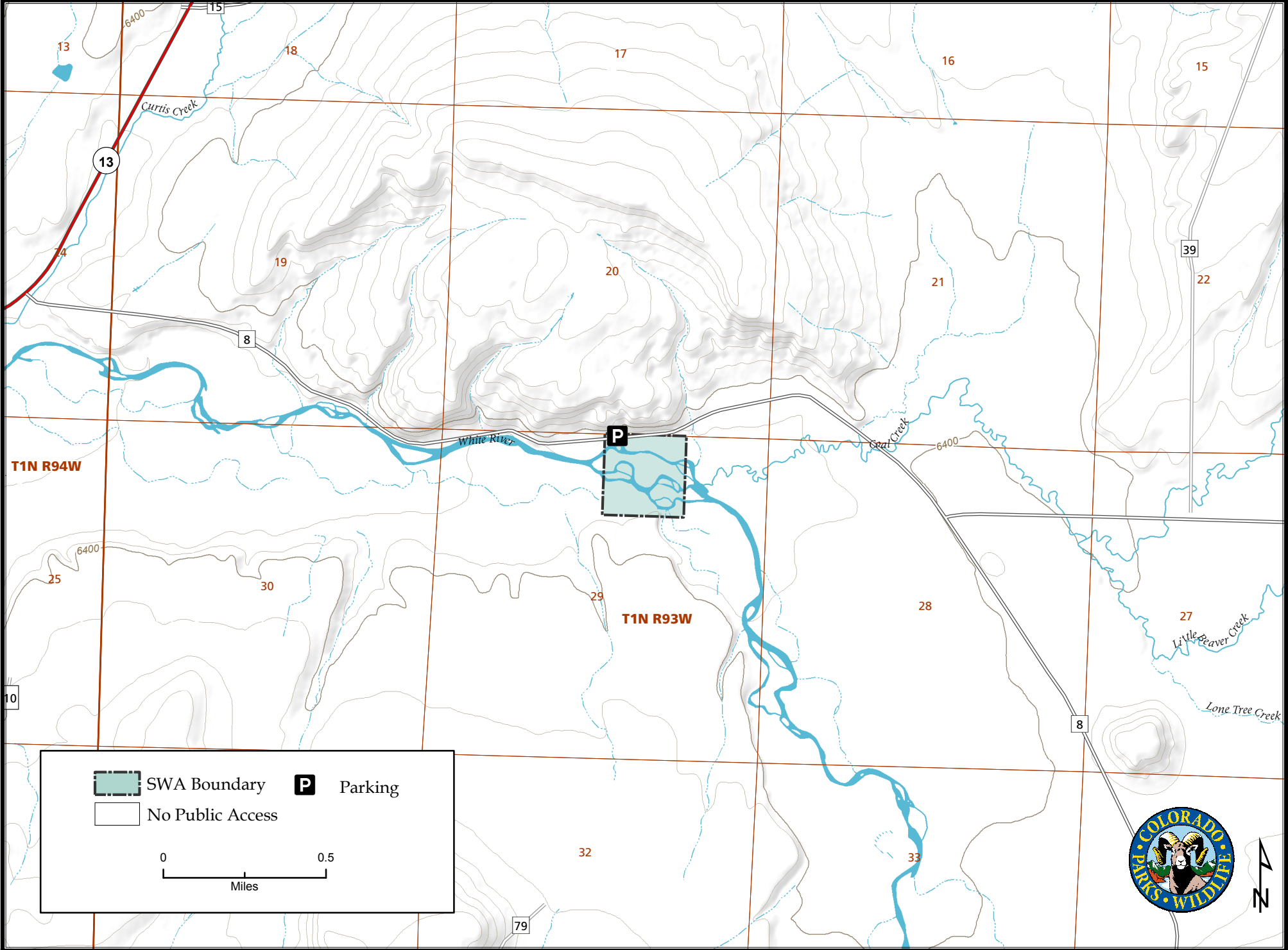





Meeker Pasture State Wildlife Area

Map Updated: 6/2/2015

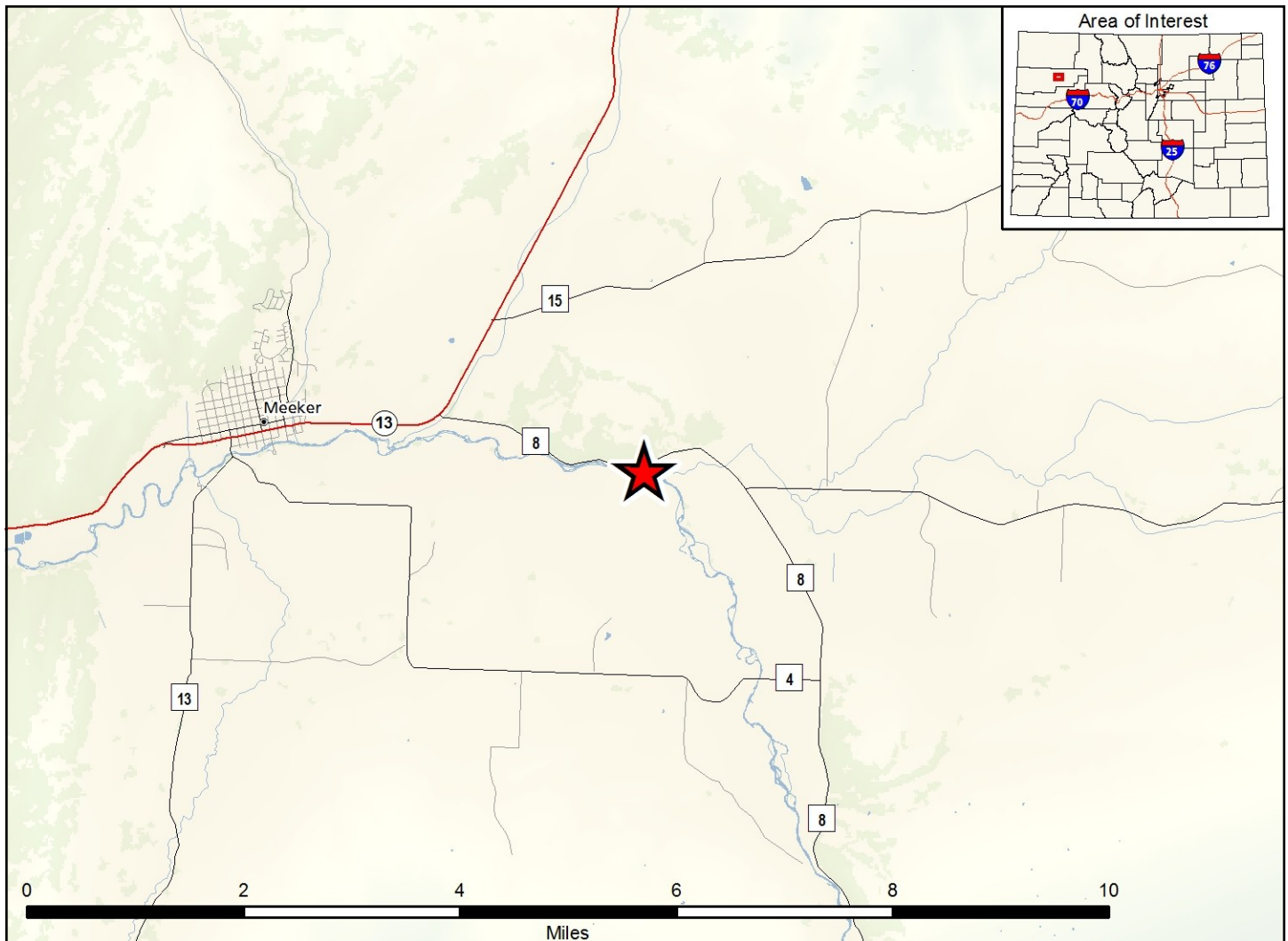


 SWA Boundary  Parking

 No Public Access

0 0.5
Miles





Meeker Pasture SWA - Rio Blanco County

From Meeker, go 1.5 miles northeast on Highway 13 to County Road 8, then 2 miles east (right) to the property.

Wildlife Area Offers:

Fishing: Coldwater Stream
 Hunting: Waterfowl
 Recreation: Picnicking, Wildlife Viewing

Regulations:

In addition to or in place of those restrictions listed in regulation #900 the below listed provisions or restrictions apply (see Chapter 9, <http://wildlife.state.co.us/RulesRegs/Regulations/>).

- A. Artificial flies and lures only.
- B. All trout must be returned to the water immediately.

More Information:

CPW Office (Meeker): (970) 878-5240
 CPW Website: <http://cpw.state.co.us/>