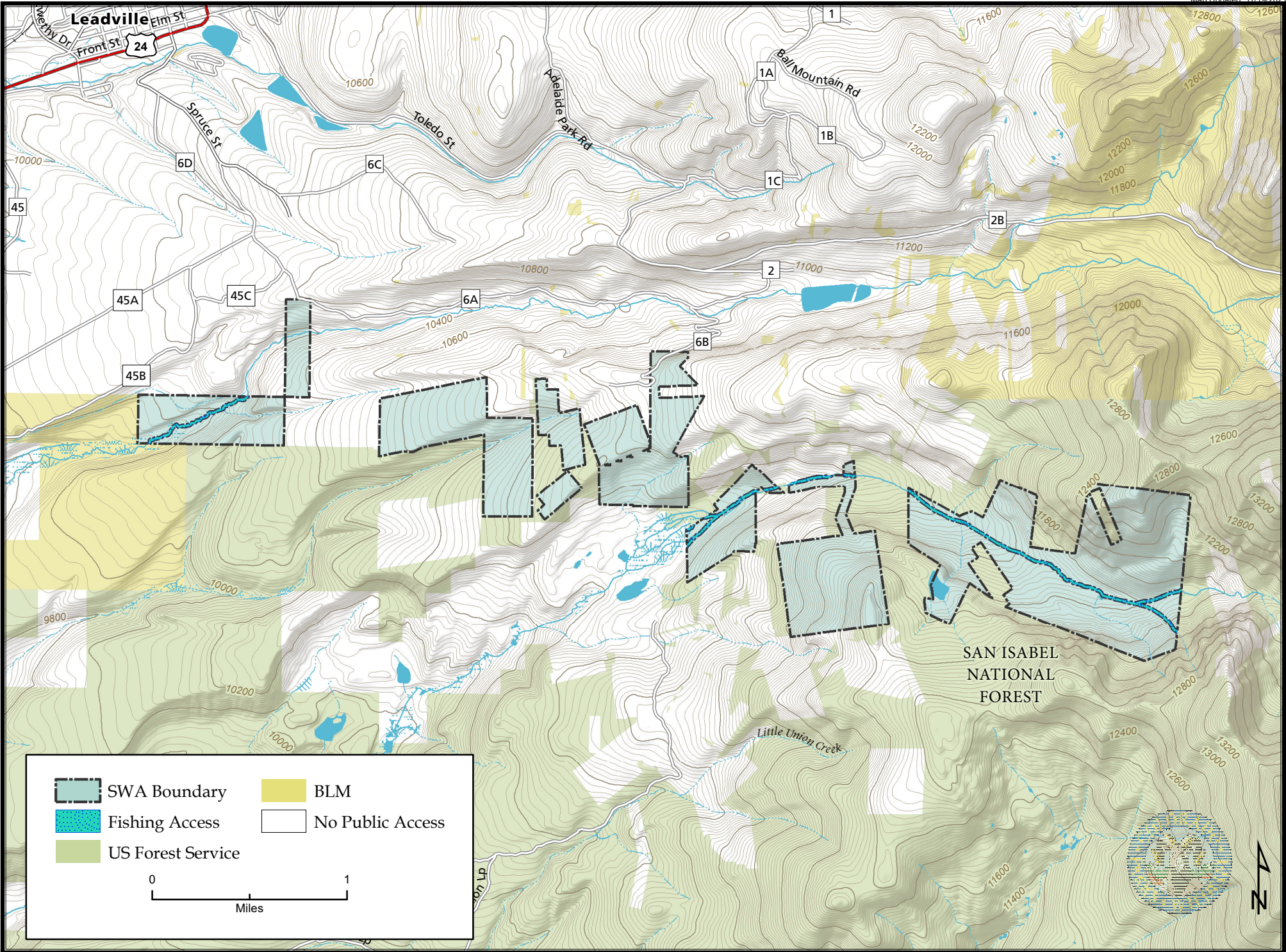


# Paddock State Wildlife Area

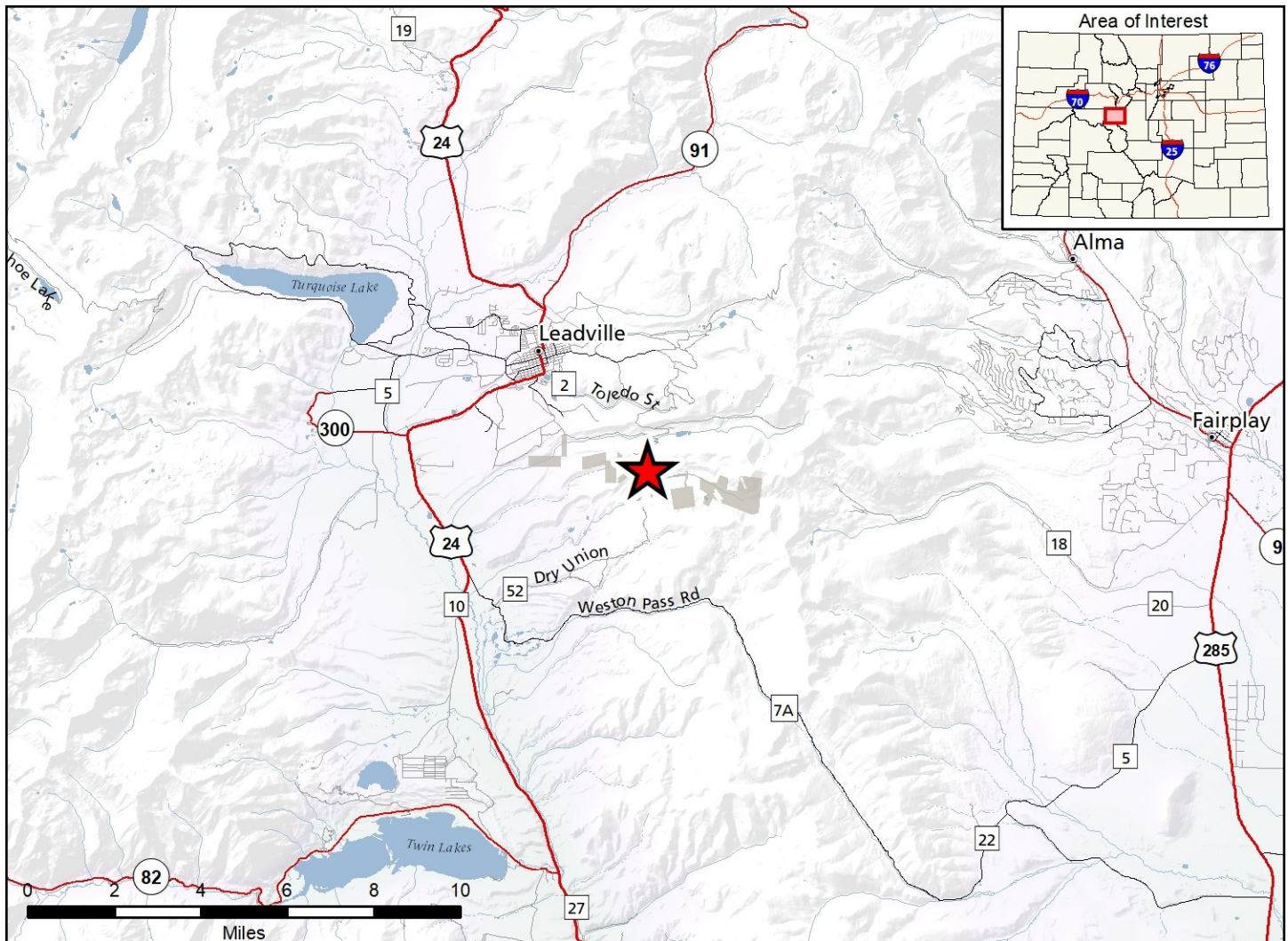
Map Updated: 11/19/2021



	SWA Boundary		BLM
	Fishing Access		No Public Access
	US Forest Service		

0 1  
Miles





### Paddock SWA - Lake County

SWA in scattered parcels generally 2–5 miles S and SE of Leadville in Iowa, Thompson and Empire gulches. Accessible by CR 2 or CR 52. Acquire information from CPW Area Office in Salida or USFS Ranger Office in Leadville .

#### Wildlife Area Offers:

Hunting: Big Game

Fishing: Coldwater Stream

#### Regulations:

*In addition to those restrictions listed in regulation #900 the below listed provisions or restrictions apply (see Chapter 9, <http://cpw.state.co.us/aboutus/Pages/Regulations.aspx>).*

- A. Public access is prohibited from August 15 through November 30, except while hunting with a valid bighorn sheep, deer, elk or bear license.
- B. Fishing access is prohibited, except in Iowa Gulch and Upper Empire Gulch.
- C. Dogs are prohibited.

#### More Information:

CPW Office (Salida): (719) 530 - 5520

CPW Website: <https://cpw.state.co.us>