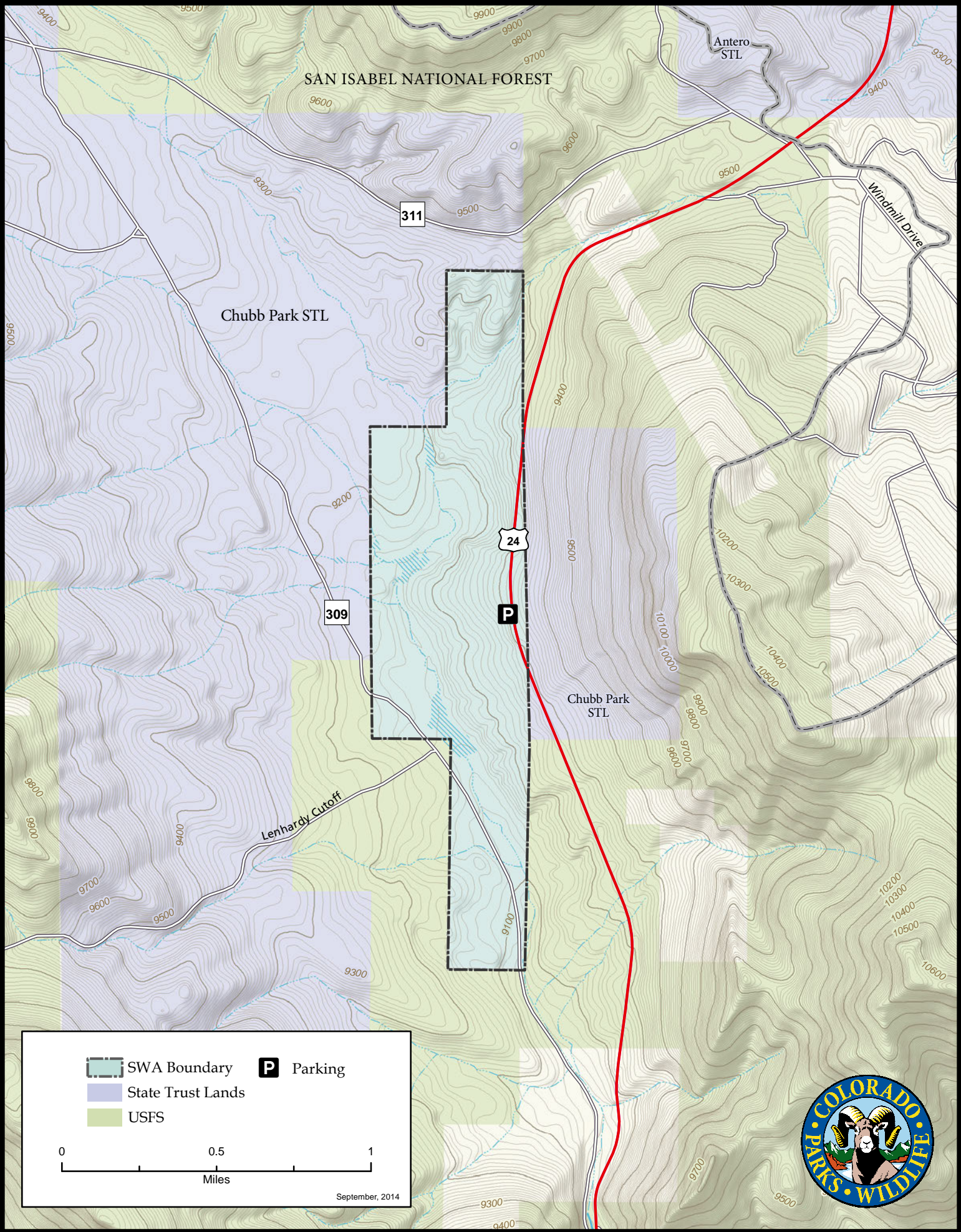
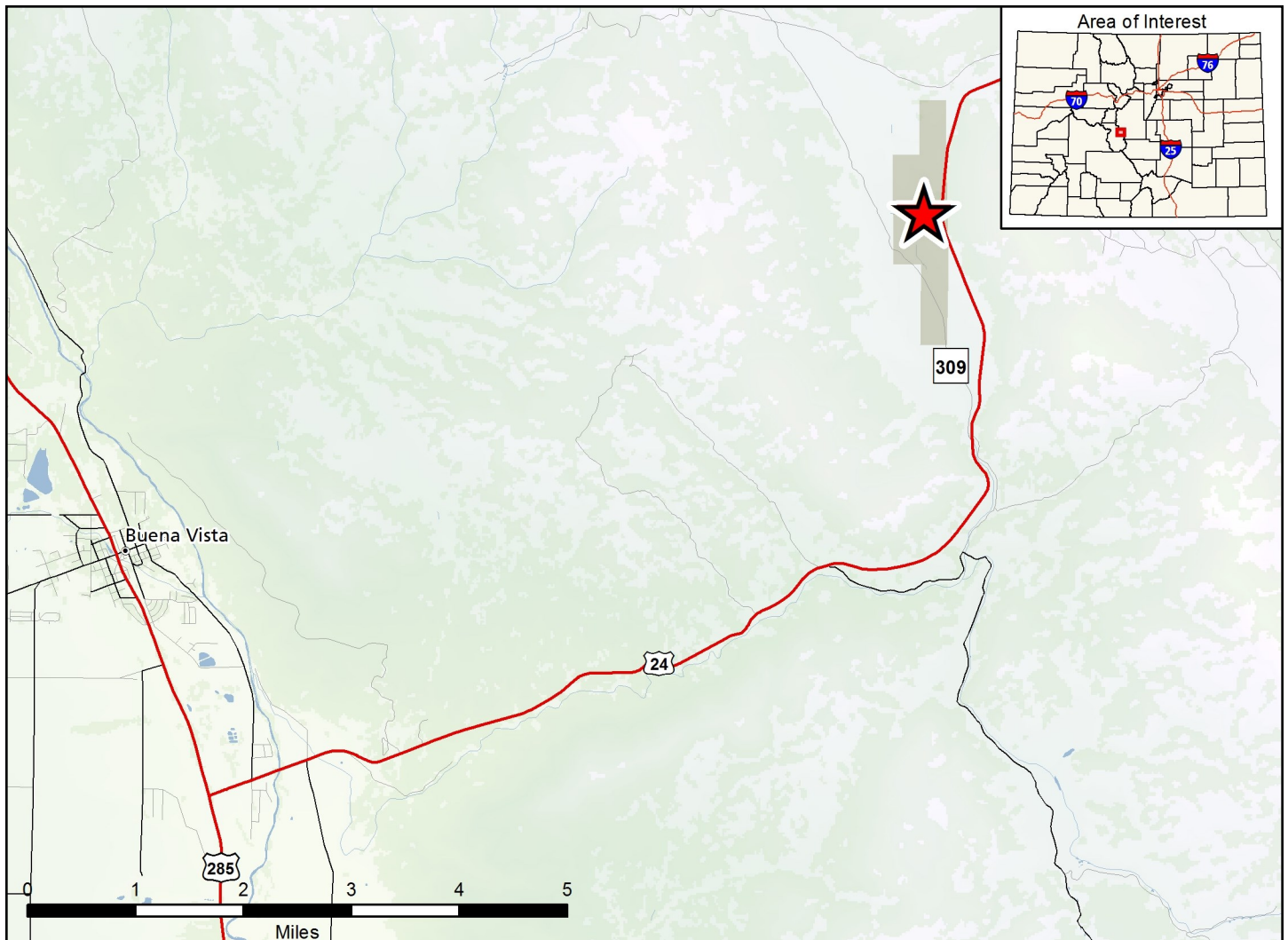


# Chubb Park Ranch State Wildlife Area







### Chubb Park Ranch SWA - Chaffee County

From Buena Vista, go E 16 miles on Hwy. 24 to CR 309, then go N on CR 309 0.5 of a mile to SWA.

#### Wildlife Area Offers:

Hunting: Big Game, small game and furbearers

Recreation: Hiking, Wildlife Viewing

#### Regulations:

*In addition to or in place of those restrictions listed in regulation #900 the below regulations apply (see Chapter 9, <https://cpw.state.co.us/aboutus/Pages/Regulations.aspx>).*

A. Discharge of firearms or bows is prohibited, except while hunting.

#### More Information:

CPW Office (Salida): (719) 530 -5520

CPW Website: <http://cpw.state.co.us>