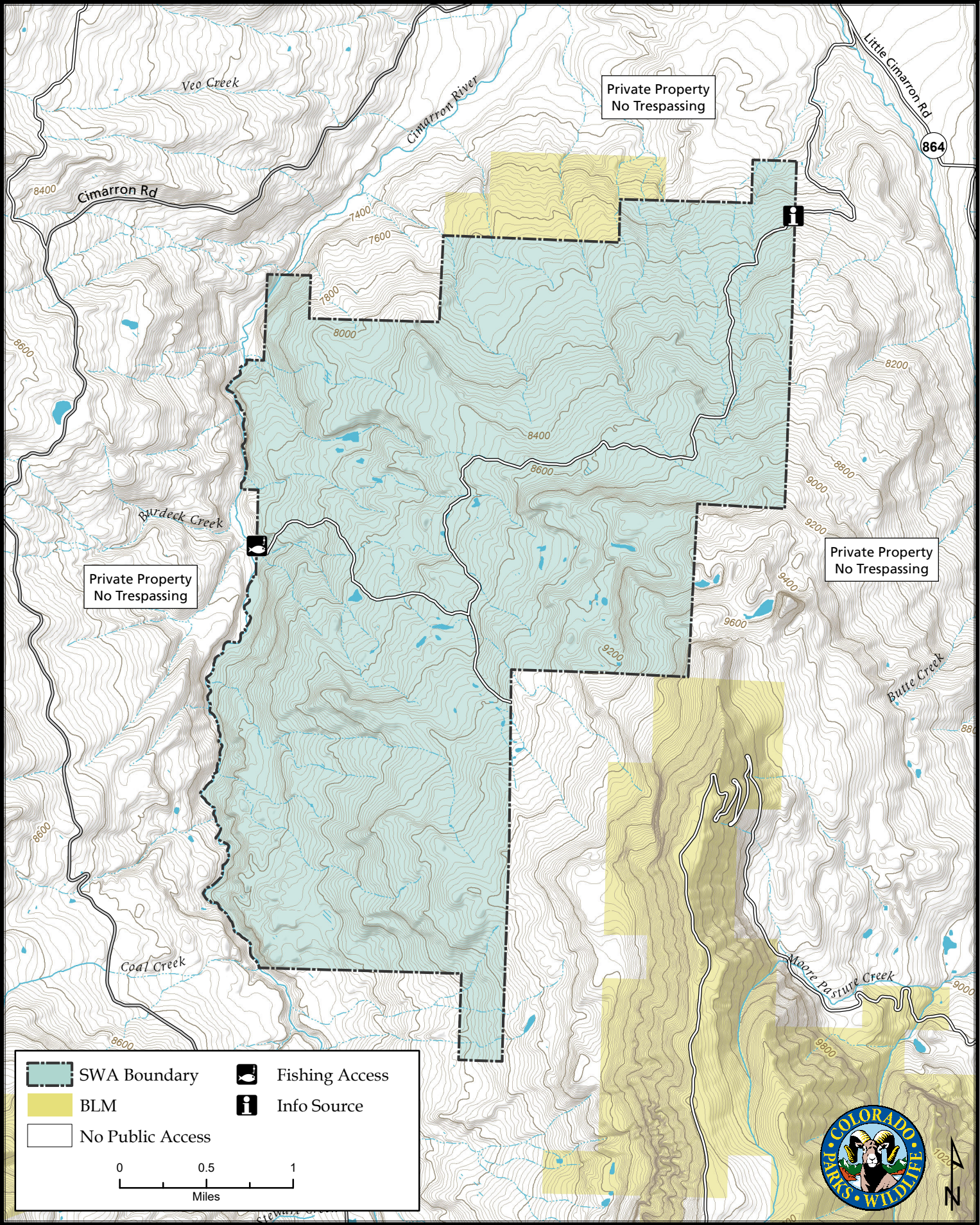
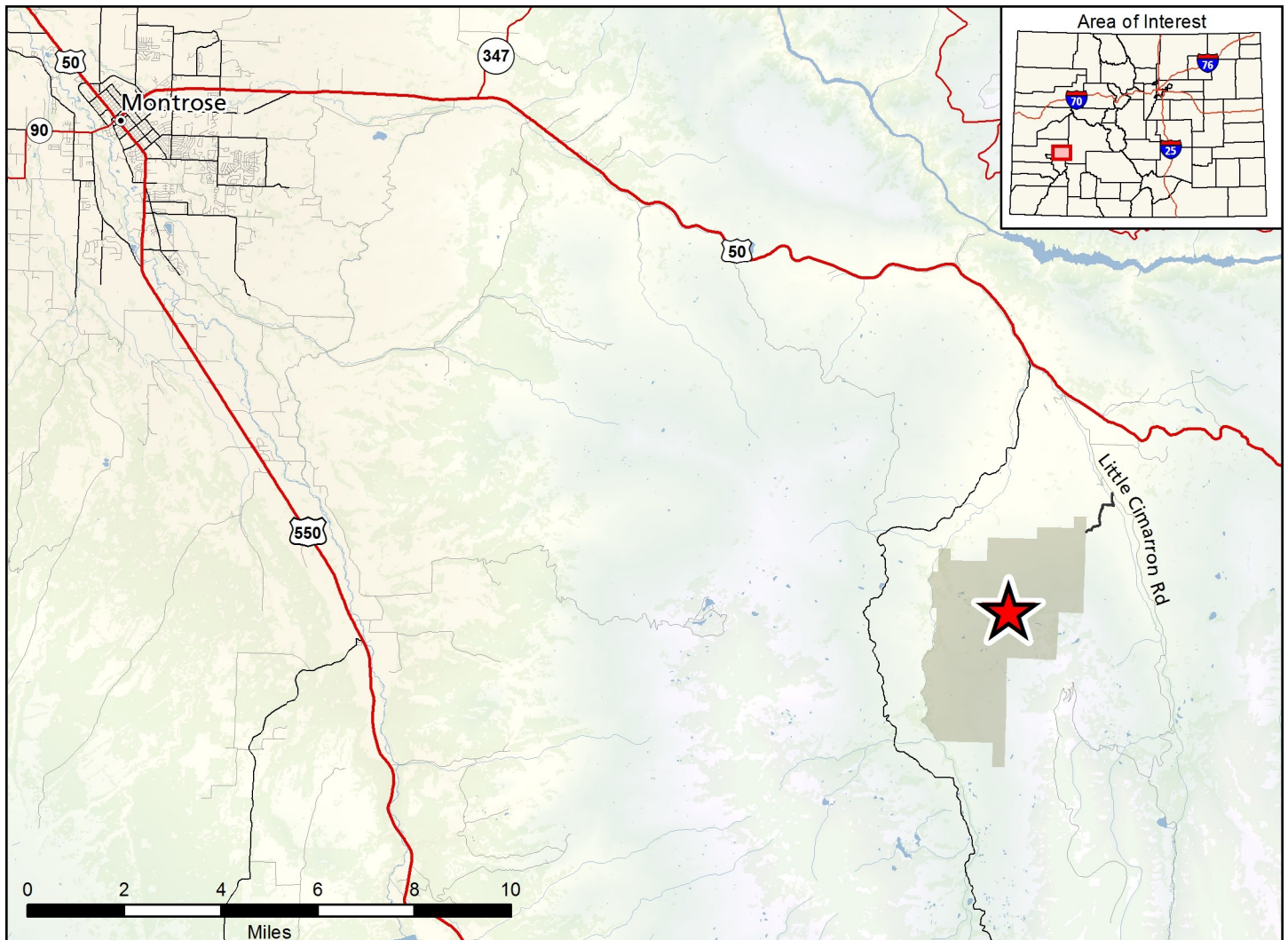


# Cimarron State Wildlife Area

Map Updated: 10/25/2022







### **Cimarron SWA - Montrose, Gunnison Counties**

From Montrose, go 23 miles East on Hwy. 50 to Little Cimarron Rd., then 2.5 miles South to the marked SWA access road, then go 1.5 miles SW.

#### **Wildlife Area Offers:**

Hunting: Deer, Elk, Waterfowl, Dusky Grouse

Fishing: Coldwater stream

Recreation: Wildlife viewing, Picnicking

#### **Regulations:**

*In addition to those restrictions listed in regulation #900 the below listed provisions or restrictions apply (see Chapter 9, <https://cpw.state.co.us/aboutus/Pages/Regulations.aspx>)*

- A. Snowmobile use is prohibited.
- B. Overnight parking is prohibited.
- C. Public access is prohibited from January 1 through June 30.

#### **More Information:**

CPW Office (Montrose): (970) 252 - 6000

CPW Website: <http://cpw.state.co.us>