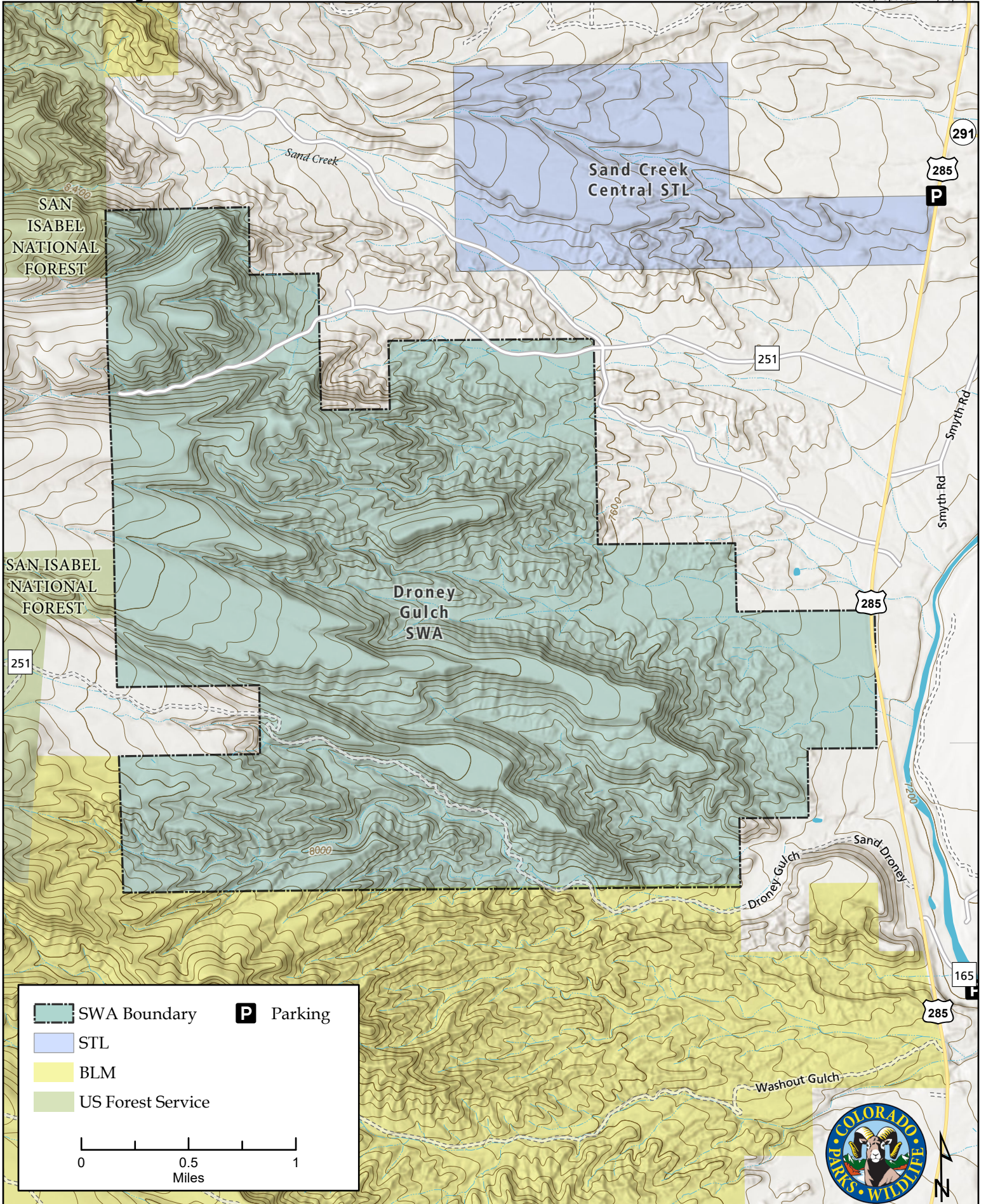


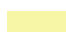


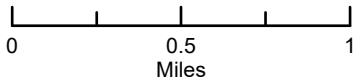


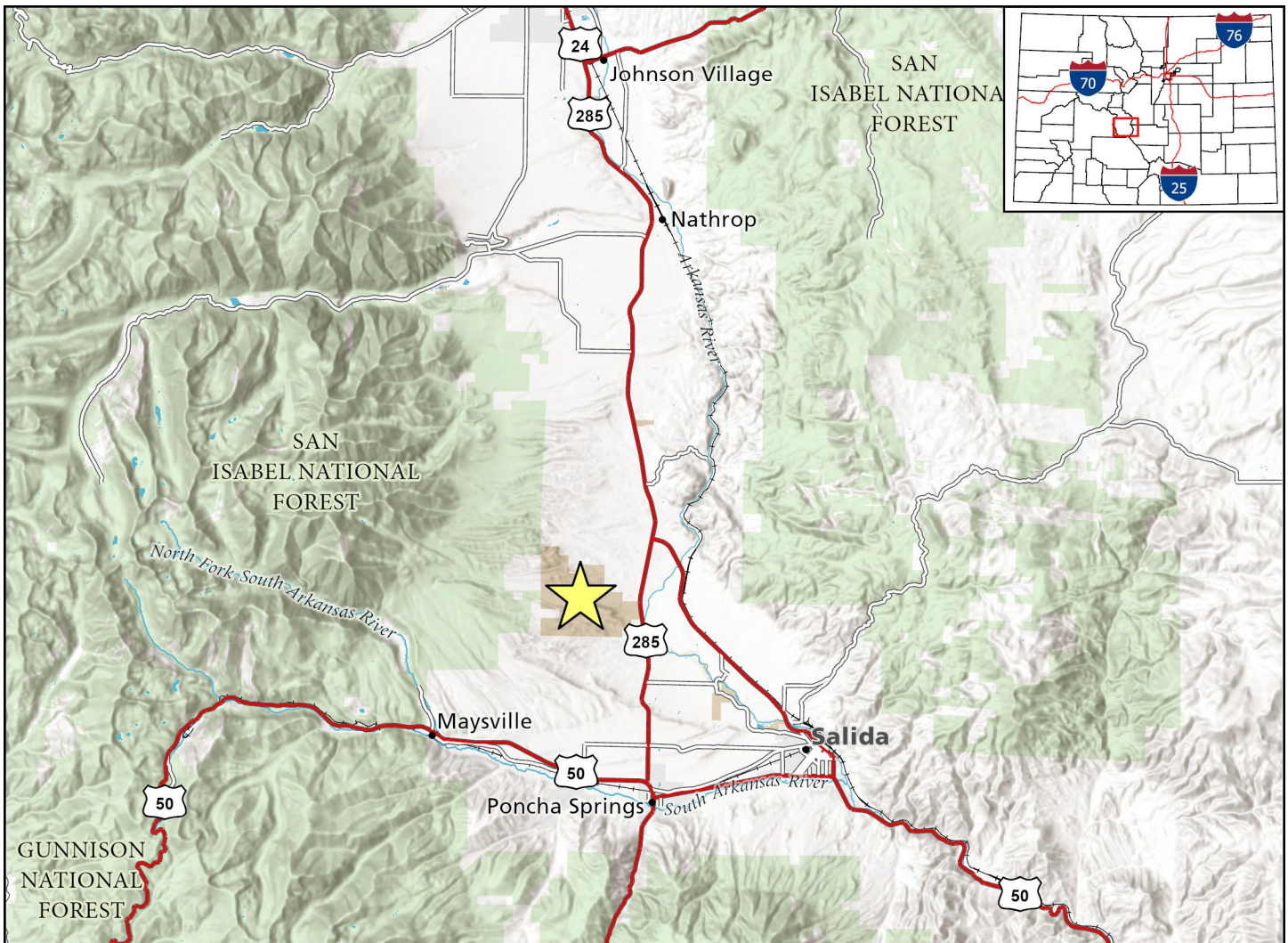
Droney Gulch SWA

Map Updated: 12/23/2024



-  SWA Boundary
-  STL
-  BLM
-  US Forest Service
-  Parking





Droney Gulch SWA - Chaffee County

ENTRANCE 1: From junction of Hwys. 50 and 285, go 4 miles N to CR 251-1. (NOTE: First mile of road is private property. After entering BLM land, SWA can be accessed for next 2 miles, through BLM land and SWA property.) **ENTRANCE 2:** About 1 mile N of CR 251-1 is an access point on Hwy. 285, "Point of Interest" site about Zebulon Pike; parking and gate into E portion of SWA. **ENTRANCE 3:** Just under 1 mile farther N (about 1 mile S of junction of Hwys. 285 and 291), CR 251 goes W; parking and access 2.3 miles W of Hwy. 285. Do not attempt access from Nvia subdivision on CR 251A.

Wildlife Areas Offer:

Hunting: Deer, Elk, Small Game

Regulations:

In addition to those restrictions listed in regulation #900 the below listed provisions or restrictions apply (see Chapter 9, <https://cpw.state.co.us/rules-and-regulations>).

This Division property has no specific regulations. **General provisions contained in regulation #900 apply.**

More Information:

CPW Office (Salida): (719) 530 - 5520

CPW Website: <https://cpw.state.co.us>