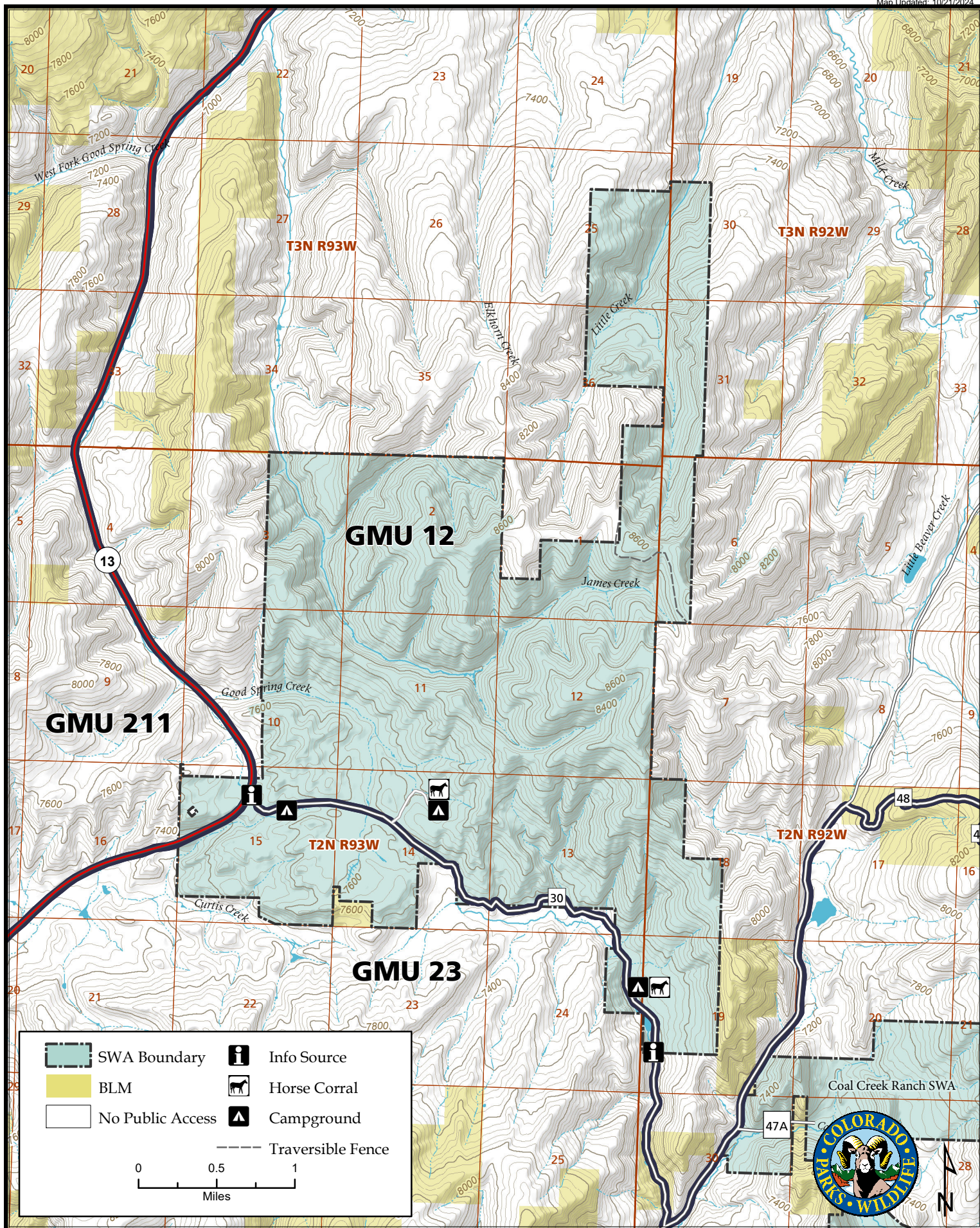


Jensen State Wildlife Area

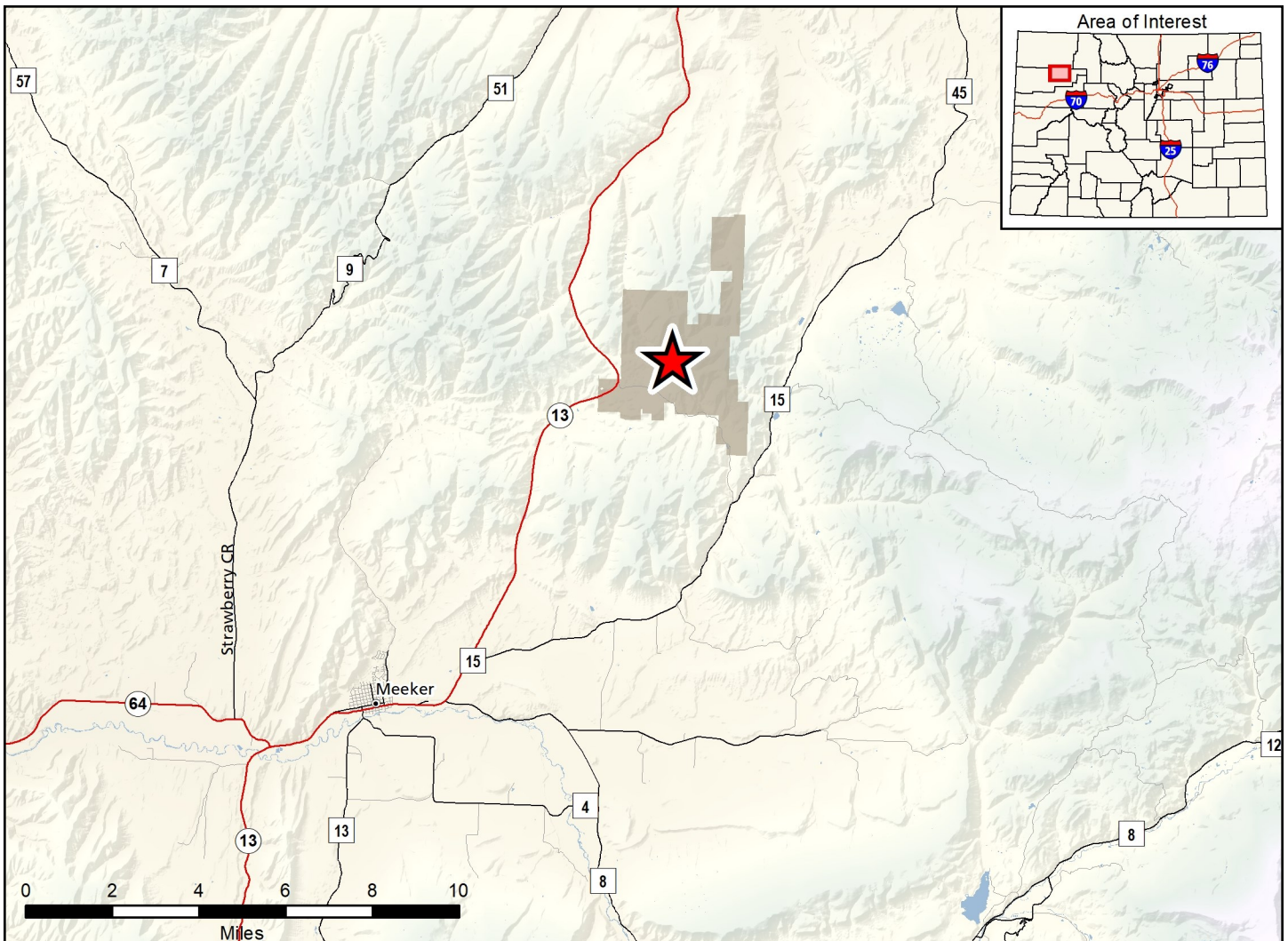
Map Updated: 10/21/2024



	SWA Boundary		Info Source
	BLM		Horse Corral
	No Public Access		Campground
	Traversible Fence		

0 0.5 1
Miles





Jensen SWA - Rio Blanco County

From Meeker, go 9 miles north on Highway 13 to Rio Blanco County Road 30 and then east (right) into the property. The entrance is well marked by signs and an information kiosk.

Wildlife Area Offers:

Hunting: Deer, Elk, Black Bear, Rabbit, Dusky (Blue) Grouse, Waterfowl

Recreation: Camping, Wildlife Viewing

Regulations:

In addition to or in place of those restrictions listed in regulation #900 the below listed provisions or restrictions apply (see Ch. 9, <http://cpw.state.co.us/aboutus/Pages/Regulations.aspx>).

- A. Public access is prohibited from January 1 through July 15.
- B. Discharge of firearms or bows is prohibited, except while hunting.
- C. Camping is allowed in designated areas only.
- D. Fires are allowed within a containment structure.

More Information:

CPW Office (Meeker): (970) 878-5240

CPW Website: <http://cpw.state.co.us/>