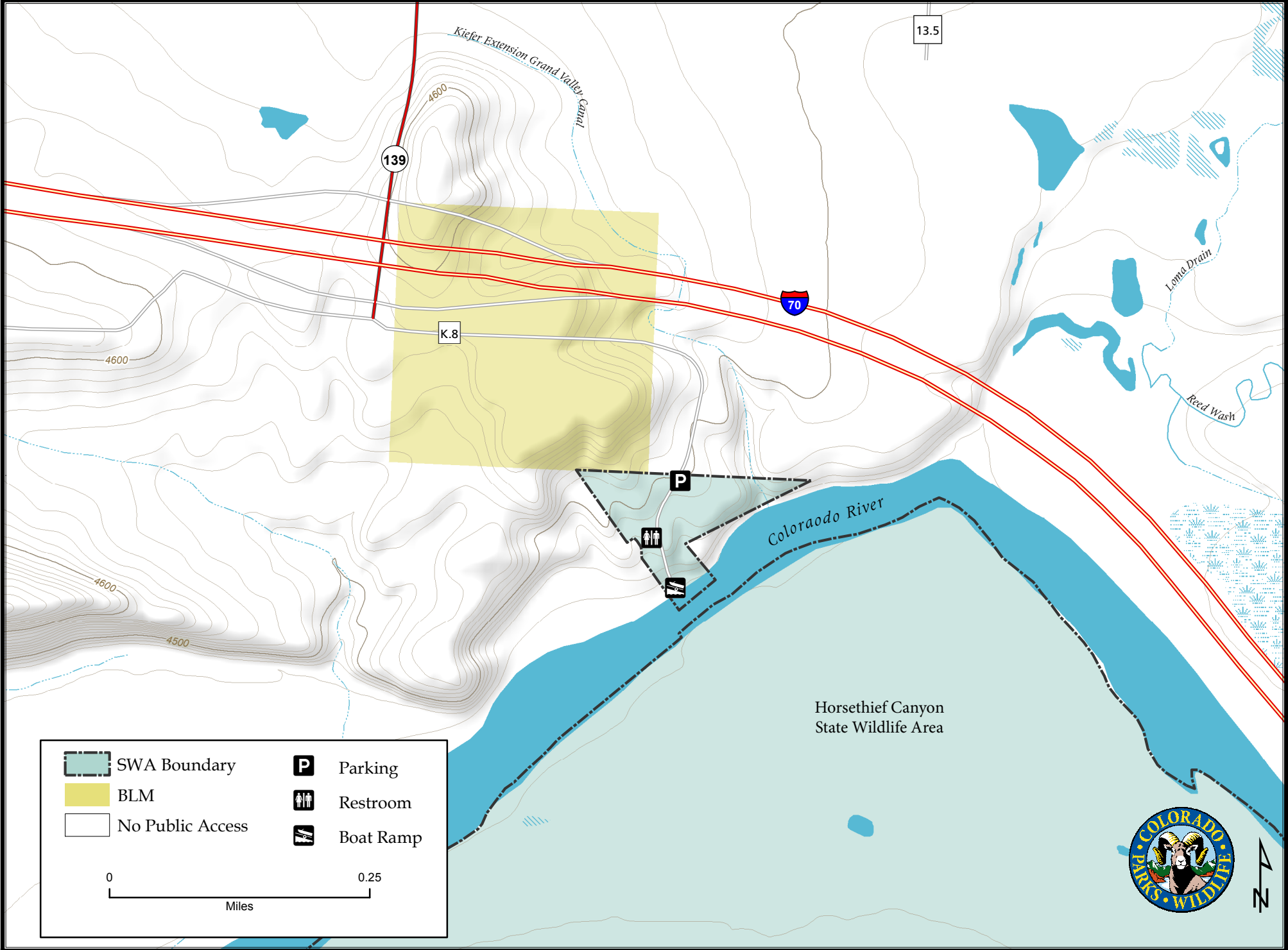


Loma Boat Launch State Wildlife Area

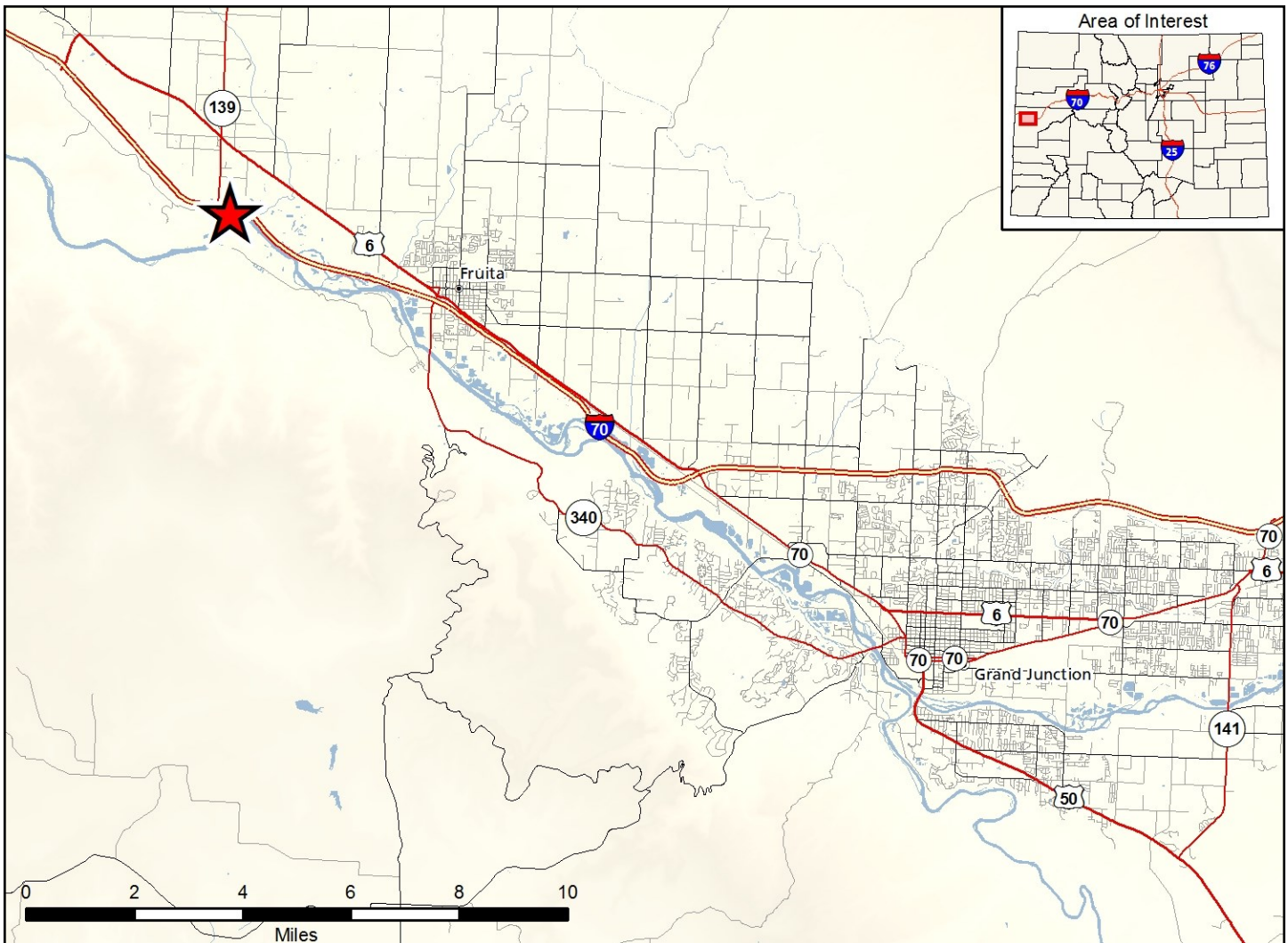
Map Updated: 10/3/2017



	SWA Boundary		Parking
	BLM		Restroom
	No Public Access		Boat Ramp

0 0.25
Miles





Loma Boat Launch SWA - Mesa County

From Fruita, go 5 miles west on Interstate 70 to the Loma exit (exit 15) and then 1.2 miles south (left) to the frontage road and 1/2 mile southeast to the parking area.

Wildlife Area Offers:

Recreation: Boating, Wildlife Viewing

Regulations:

In addition to or in place of those restrictions listed in regulation #900 the below listed provisions or restrictions apply (see Ch. 9, <http://cpw.state.co.us/aboutus/Pages/Regulations.aspx>).

- A. Parking and access is allowed from designated areas only.
- B. Launching and use of vessels is allowed, except that the launching and take out of personal watercraft (PWC) is prohibited.
- C. Discharge of firearms or bows is prohibited.
- D. Dogs are allowed.

More Information:

CPW Office (Grand Junction): (970) 255-6100

CPW Website: <http://cpw.state.co.us/>