

ISSUES SUBMITTAL FORM

Date: 08/09/2024

ISSUE:	Should fishing regulations on current and planned native greenback cutthroat trout conservation waters be changed to artificial flies and lures only, all trout must be returned to the water immediately upon catch?
DISCUSSION (FACTS AND FIGURES, EXPLANATION OF ISSUE):	
<p>The two lakes and one creek shown below currently contain native greenback cutthroat trout or are planned to be stocked by 2025. Greenback cutthroat trout are a state-threatened Tier 1 State Wildlife Action Plan (SWAP) species. They are also a federally threatened species, so take or harvest is prohibited. Eliminating angler harvest will expedite the establishment of these populations.</p> <p><u>Northeast Region (Greenback Cutthroat Trout)</u> Slater Lake – Clear Creek County (Area 1) 2024 Non-native reclamation; Stocking 2025 Lost Lake – Larimer County (Area 4) Fishless; Stocking 2024 Boston Peak Creek – Larimer County (Area 4) Fishless; Stocked 2023</p>	
STATE LAW REQUIRES CPW TO SOLICIT INPUT FROM STAKEHOLDERS THAT MAY BE AFFECTED POSITIVELY OR NEGATIVELY BY THE PROPOSED RULES. THE FOLLOWING STAKEHOLDERS HAVE BEEN ADVISED OF AND INVITED TO PROVIDE INPUT ON THE REGULATORY CHANGES PROPOSED IN THIS ISSUE PAPER:	
IT IS ASSUMED THAT ALL NECESSARY INTERNAL PARTIES HAVE BEEN NOTIFIED.	
[List stakeholder groups and briefly summarize comments received]	
U.S. Forest Service U.S. Fish and Wildlife Service CPW Area 1, Area 4, and Aquatic Staff	
CPW held a public meeting on June 20 th and there was no opposition to the proposed regulation changes.	
ALTERNATIVES: (POSSIBLE OUTCOMES or POSSIBLE REGULATIONS):	
1. *Preferred Alternative* : Implement regulations that allow fishing by artificial flies and lures only, all trout must be returned to the water immediately upon catch.	
Boston Peak Creek – Larimer County <ul style="list-style-type: none"> a. Statewide Regulations Artificial flies and lures only. b. Trout must be returned to the water immediately. 	
Lost Lake – Larimer County <ul style="list-style-type: none"> a. Statewide Regulations Artificial flies and lures only. b. Trout must be returned to the water immediately. 	
Slater Lake – Clear Creek County <ul style="list-style-type: none"> a. From the headwaters above Slater Lake downstream to Fall River Reservoir and including Slater Lake <ul style="list-style-type: none"> 1) Statewide Regulations Artificial flies and lures only. 2) Trout must be returned to the water immediately. 	
2. Status quo – No Change, Statewide General Regulations	
Issue Raised by:	NE Region Aquatics
Author of the issue paper (if different than person raising the issue):	Kyle Battige

CC:	Mark Sandersen, Kira Paik, Jenn Logan, Boyd Wright, Jason Surface, Mark Lamb, Chase Rylands, Joe Walters, Matt Nicholl, Matt Haworth, Mark Leslie, Brock McArdle
APPROVED FOR FURTHER CONSIDERATION BY:	Matt Nicholl
REQUIRES NEW SPACE IN THE BROCHURE?	YES
ARE ADEQUATE STAFF AND FUNDING RESOURCES AVAILABLE TO IMPLEMENT?	YES
REGION, BRANCH, OR SECTION LEADING IMPLEMENTATION	NE Region Aquatics
RECOMMENDED FOR CONSENT AGENDA?	NO

ISSUES SUBMITTAL FORM

Date: 08/09/2024

ISSUE:	Should Colorado Parks and Wildlife (CPW) implement a 10" minimum size limit for white bass at Boyd Lake?		
DISCUSSION (FACTS AND FIGURES, EXPLANATION OF ISSUE):			
<p>Boyd Lake is a 1700 acre impoundment northwest of Loveland that represents the focal point of this State Park. Due to a relatively robust snowpack and exceptional natural recruitment of white bass, angling success for this species has been solid for the past 4-5 years. However, the population is trending downward based on the 2023 gillnet survey and there has been a boom and bust cycle whereby the population substantially declines approximately every 5 years (Figures 1 & 2).</p> <p>White bass are typically not stocked in Colorado thus reliance on natural reproduction becomes paramount. White bass typically reproduce at age-3 in Northeast Colorado. At present, age-3 white bass range 10-12 inches in length. However, park and area staff have documented harvest of many white bass less than 10 inches. To maintain quality angling and bolster natural reproduction we recommend a new regulation of a 10-inch minimum size limit for white bass at Boyd Lake to protect white bass from harvest until they reach spawning size.</p>			
<p>STATE LAW REQUIRES CPW TO SOLICIT INPUT FROM STAKEHOLDERS THAT MAY BE AFFECTED POSITIVELY OR NEGATIVELY BY THE PROPOSED RULES. THE FOLLOWING STAKEHOLDERS HAVE BEEN ADVISED OF AND INVITED TO PROVIDE INPUT ON THE REGULATORY CHANGES PROPOSED IN THIS ISSUE PAPER:</p> <p>*IT IS ASSUMED THAT ALL NECESSARY INTERNAL PARTIES HAVE BEEN NOTIFIED*.</p>			
<p>Internal: Area 2 DWMs, Area 2 AWM, Boyd Lake State Park staff, Aquatic Biologist. All groups are supportive of the proposed change.</p> <p>CPW held a public meeting on June 20th and there was no opposition to the proposed regulation change.</p>			
ALTERNATIVES: (POSSIBLE OUTCOMES or POSSIBLE REGULATIONS):			
<p>1. *Preferred Alternative*: BOYD LAKE – LARIMER.</p> <ul style="list-style-type: none"> a. The minimum size for largemouth and smallmouth bass is 15 inches in length. b. The minimum size for white bass is 10 inches long. c. The minimum size for walleye and saugeye is 15 inches in length. d. No more than one walleye or saugeye in the aggregate greater than 21 inches in length may be taken per day. <p>2. Status Quo - No Change</p>			
Issue Raised by:	Benjamin Swigle (Area 2 Aquatic Biologist) Clayton Brossart (Area 2 DWM) Jason Duetsch (Area 2 AWM) Eric Grey (Park Manager – Boyd Lake SP)		
Author of the issue paper (if different than person raising the issue):	Benjamin Swigle		
CC:	Kyle Battige		
APPROVED FOR FURTHER CONSIDERATION BY:		Matt Nicholl	
REQUIRES NEW SPACE IN THE BROCHURE?		YES	
ARE ADEQUATE STAFF AND FUNDING RESOURCES AVAILABLE TO IMPLEMENT?		YES	
REGION, BRANCH, OR SECTION LEADING IMPLEMENTATION		Aquatic Section	
RECOMMENDED FOR CONSENT AGENDA?		NO	

2023 Fall Survey (9/28/2023) 5 Gillnets + Boat Efish

SPECIES	Total Catch	Mean	Length (inches)		Mean	Weight (lb)	
			Minimum	Maximum		Minimum	Maximum
BLACK CRAPPIE	4	3.09	2.48	3.39	na	0.00	0.00
BLUEGILL	15	5.08	3.78	8.86	0.43	0.28	0.59
CHANNEL CATFISH	6	20.85	12.60	25.39	3.94	0.61	7.02
COMMON CARP	19	13.26	4.65	24.33	1.35	0.19	3.05
EMERALD SHINER	1016	1.76	1.54	3.94	na	0.00	0.00
GIZZARD SHAD	30	13.83	11.18	16.73	0.60	0.29	1.83
LARGEMOUTH BASS	74	5.73	2.52	17.13	1.63	0.17	3.02
SAUGEYE	9	15.26	13.31	16.69	1.22	0.74	1.59
SMALLMOUTH BASS	22	8.48	3.39	16.14	0.89	0.08	2.09
WIPER	1	18.82	18.82	18.82	3.71	3.71	3.71
TIGER MUSKIE	2	19.29	18.11	20.47	1.59	1.34	1.83
WALLEYE	158	12.27	6.69	25.67	0.77	0.04	6.37
WHITE BASS	21	11.74	5.59	15.67	0.80	0.08	1.99
WHITE SUCKER	12	14.56	10.24	17.72	1.35	0.85	2.24
YELLOW PERCH	100	5.43	2.68	9.65	0.11	0.03	0.35

Figure 1. Survey data summary for Boyd Lake collected September, 2023.

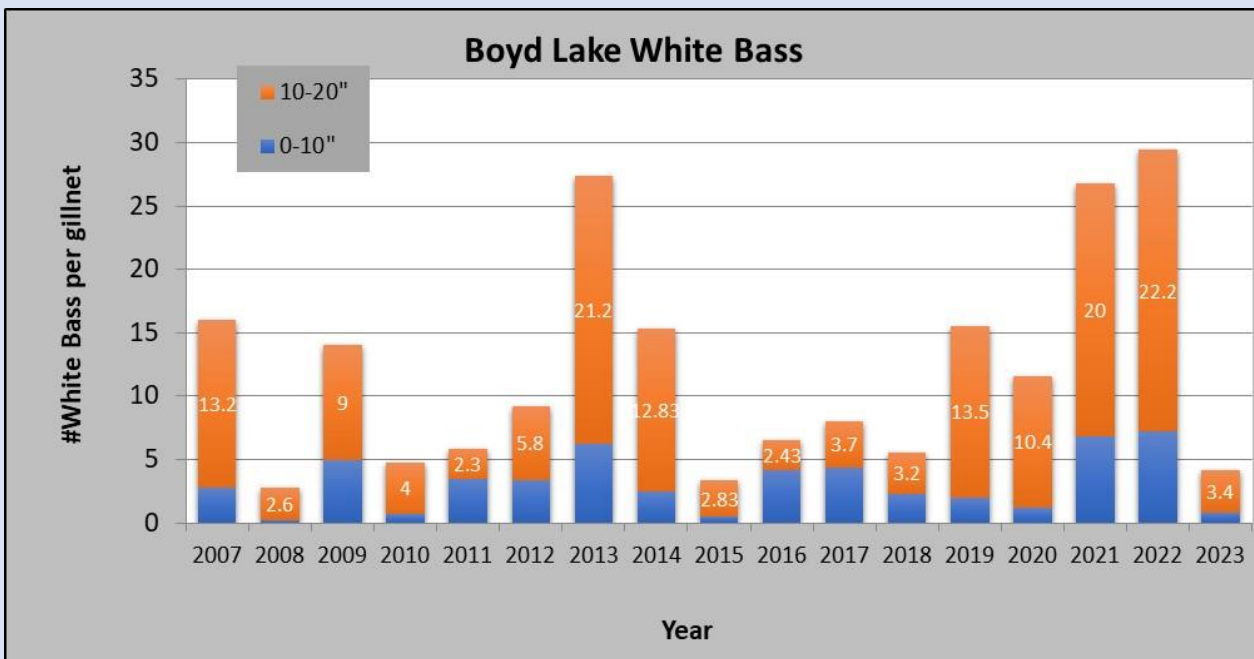


Figure 2. Abundance trends for white bass surveyed from Boyd Lake 2007-2023. The population fluctuates substantially thus installing a 10 inch minimum should improve natural reproduction by this species.

ISSUES SUBMITTAL FORM

Date:

08/09/2024

ISSUE: Should the current East River fishing closure be adjusted to improve fishing opportunity?

DISCUSSION (FACTS AND FIGURES, EXPLANATION OF ISSUE):

The East River is located north of the town of Gunnison. Migrating kokanee salmon stage in the East River below the Roaring Judy State Fish Hatchery outlet before migrating into the hatchery fishing ponds and kokanee spawntake facility. Angler catch and release of kokanee disrupts the migration and leads to additional kokanee mortality and reduced egg quality. A fishing closure of August 1 through October 31 was implemented in 2001 on the East River downstream of the hatchery outlet to the southern hatchery property boundary (.4 miles). As few kokanee migrate in early August, this closure could be relaxed to allow angling use in early August without impacting migrating kokanee and the collection of eggs.

STATE LAW REQUIRES CPW TO SOLICIT INPUT FROM STAKEHOLDERS THAT MAY BE AFFECTED POSITIVELY OR NEGATIVELY BY THE PROPOSED RULES. THE FOLLOWING STAKEHOLDERS HAVE BEEN ADVISED OF AND INVITED TO PROVIDE INPUT ON THE REGULATORY CHANGES PROPOSED IN THIS ISSUE PAPER:

***IT IS ASSUMED THAT ALL NECESSARY INTERNAL PARTIES HAVE BEEN NOTIFIED*.**

[List stakeholder groups and briefly summarize comments received]

This regulation change would increase angling access, no public engagement was pursued.

ALTERNATIVES: (POSSIBLE OUTCOMES or POSSIBLE REGULATIONS):

1. ***Preferred Alternative*:**
 East River - Gunnison County
 - a. From the upstream property boundary at the Roaring Judy Fish Hatchery downstream to the confluence with the Taylor River:
 1. Fishing is by artificial flies and lures only.
 2. The bag and possession limit and maximum size for trout is two fish, 12 inches in length.
 3. The taking of kokanee salmon is prohibited.
 - b. From the Roaring Judy Fish Hatchery outlet downstream to the Roaring Judy property boundary:
 1. Fishing is prohibited from August 15 through October 31.
2. Status quo.

Issue Raised by: Dan Brauch and Seth Firestone

Author of the issue paper (if different than person raising the issue):

CC:

APPROVED FOR FURTHER CONSIDERATION BY:	Matt Nicholl
REQUIRES NEW SPACE IN THE BROCHURE?	NO
ARE ADEQUATE STAFF AND FUNDING RESOURCES AVAILABLE TO IMPLEMENT?	YES
REGION, BRANCH, OR SECTION LEADING IMPLEMENTATION	Aquatic Section
RECOMMENDED FOR CONSENT AGENDA?	NO

ISSUES SUBMITTAL FORM

Date: 08/09/2024	
ISSUE:	Should Colorado Parks and Wildlife (CPW) improve protections of the Yampa River Mountain Whitefish population by formalizing a fall fishing closure from October 1 through November 15 on Fish Creek, a tributary to the Yampa River, and 300 feet of the main stem of the Yampa River at the confluence?
DISCUSSION (FACTS AND FIGURES, EXPLANATION OF ISSUE):	
<p>CPW is proposing to implement a seasonal fishing closure on Fish Creek near the Yampa River confluence and a small section of the Yampa River—in the same location—to protect spawning Mountain Whitefish. In collaboration with CPW, voluntary fall fishing closures have been implemented by the City of Steamboat Springs to provide protection for mountain whitefish, as they are highly vulnerable at this location during the spawning season. Lack of compliance with voluntary fishing closures combined with continued development along Fish Creek necessitates the implementation of an annual mandatory fall fishing closure.</p> <p>In Colorado, Mountain Whitefish are native only to the Yampa and White River drainages. This species is one of two native sportfish in northwest Colorado, the other being Colorado River Cutthroat Trout. Fish Creek has been identified as the primary spawning tributary of the Yampa River and has been closely monitored by CPW for several years. Approximately 300-500 spawning adults congregate in less than .25 miles of this tributary annually. Dramatic declines in the native Mountain Whitefish population of the Upper Yampa River drainage have been evident over the past twenty-five years. This decline has been attributed to several factors, including: the development of reservoirs, the expansion of non-native northern pike within the Yampa River basin, and extreme drought. CPW’s recent fish population surveys on the Yampa River near the Fish Creek confluence show that mountain whitefish have comprised 5% or less of the overall species composition. Following documented declines in mountain whitefish populations across multiple river basins in Colorado, CPW has implemented statewide reductions in bag and possession limits, and has enacted fall angling closures on multiple spawning tributaries.</p> <p>The lower portion of Fish Creek is situated within the City limits of Steamboat Springs. Out of concern for this fragile native fish population, in recent years the City of Steamboat Springs has collaborated with CPW in implementing a voluntary fishing closure on the lower reach of Fish Creek as well as a small portion of the Yampa River at the confluence.</p> <p>It is also important to note that this section of Fish Creek does not support a desirable fish population absent this spawn migration. There is virtually no fishing pressure on this reach of Fish Creek outside of the fall spawn run. Only the 300’ of the Yampa River at the confluence would be impacted from a recreation standpoint.</p> <p>Extensive residential development, along with a new paved trail adjacent to Fish Creek has resulted in significant exposure of these concentrated spawning fish. There has been a recent uptick in violations of the enacted ‘voluntary’ angling closure. Therefore, both local CPW and City staff feel it is necessary to implement a mandatory closure in order to protect this fragile population and convey the importance of protecting this population.</p>	
<p>STATE LAW REQUIRES CPW TO SOLICIT INPUT FROM STAKEHOLDERS THAT MAY BE AFFECTED POSITIVELY OR NEGATIVELY BY THE PROPOSED RULES. THE FOLLOWING STAKEHOLDERS HAVE BEEN ADVISED OF AND INVITED TO PROVIDE INPUT ON THE REGULATORY CHANGES PROPOSED IN THIS ISSUE PAPER:</p>	
<p>*IT IS ASSUMED THAT ALL NECESSARY INTERNAL PARTIES HAVE BEEN NOTIFIED*.</p>	

Internal publics include: Aquatic, Area, and Regional staff; Area and Regional staff have conveyed support for this measure.

External publics include: Anglers (both commercial and non-commercial), City of Steamboat Springs staff, and members of the public utilizing the city trail system.

The City of Steamboat Springs notifies all commercial users of the current voluntary closure through their annual permitting process.

CPW hosted a public meeting on June 20th, and there was no opposition to the proposed changes.

ALTERNATIVES: (POSSIBLE OUTCOMES or POSSIBLE REGULATIONS):

1. *Preferred Alternative*:

Add the following language to Chapter W-1, Article I, #108 (B):

Fish Creek – Routt County; City of Steamboat Springs

- a. From the confluence with the Yampa River upstream for 0.4 miles to the Rollingstone Drive bridge
 - 1. Fishing is prohibited from October 1 through November 15.

#471 Yampa River - Routt County

- a. From Stagecoach Dam downstream for 0.6 mile:
 - 1. Fishing is by artificial flies and lures only.
 - 2. All trout must be returned to the water immediately upon catch.
- b. From Stagecoach Dam downstream to Catamount Lake:
 - 1. Spawning areas (redds) are closed to fishing as posted to protect spawning fish.
- c. From 0.6 miles below Stagecoach Dam downstream to the confluence with Walton Creek, excluding Catamount Lake:
 - 1. Fishing is by artificial flies and lures only.
 - 2. The bag and possession limit for trout is two fish.
- d. From the confluence with Walton Creek downstream for 4.8 miles to the James Brown (Soul Center of the Universe) bridge, in Steamboat Springs:
 - 1. Fishing is by artificial flies and lures only.
 - 2. All trout must be returned to the water immediately upon catch.
- e. From the James Brown (Soul Center of the Universe Bridge) downstream to the Colo 394 bridge near Craig:
 - 1. The bag and possession limit for trout is two fish.
- f. From the headwaters of the Yampa River downstream to the confluence with the Green River:
 - 1. There is no bag or possession limit for channel catfish, largemouth bass, smallmouth bass, northern pike, walleye, green sunfish, bluegill, bullhead, yellow perch or crappie.
- g. From the confluence with Fish Creek upstream for 100 feet, and downstream 200 feet:
 - 1. Fishing is prohibited from October 1 through November 15.

2. Status Quo: No change.

Issue Raised by:	Bill Atkinson, Area 10 Aquatic Biologist
Author of the issue paper (if different than person raising the issue):	

CC:	Travis Black, Northwest Regional Manager Ben Felt, Senior Aquatic Biologist Kris Middeldorf, Area 10 Wildlife Manager David Rehak-Suma, Area 10 District Wildlife Manager Bill Atkinson, Area 10 Aquatic Biologist
APPROVED FOR FURTHER CONSIDERATION BY:	Matt Nicholl
REQUIRES NEW SPACE IN THE BROCHURE?	YES
ARE ADEQUATE STAFF AND FUNDING RESOURCES AVAILABLE TO IMPLEMENT?	YES
REGION, BRANCH, OR SECTION LEADING IMPLEMENTATION	Aquatic Section
RECOMMENDED FOR CONSENT AGENDA?	NO

ISSUES SUBMITTAL FORM

Date: 08/09/2024

ISSUE: Should Colorado Parks and Wildlife liberalize bag and possession limits of brown trout on the Fryingpan River?

DISCUSSION (FACTS AND FIGURES, EXPLANATION OF ISSUE):

Over the last 10 years, the abundance of brown trout is increasing in the Fryingpan River; however, the number of larger trout and average length of trout is decreasing. Despite escalating fishing pressure, due to a growing population of local and visiting public, abundance of brown trout continues to increase. Angler surveys have ruled out harvest as a reason for declining numbers of larger fish, as 85% of surveyed anglers practice catch-and-release. Most anglers (70%) also report that fishing experience would be improved if fish were bigger. Decreasing size of fish is linked to an exceedingly dense population of brown trout, which creates competition for food resources in the Fryingpan River.

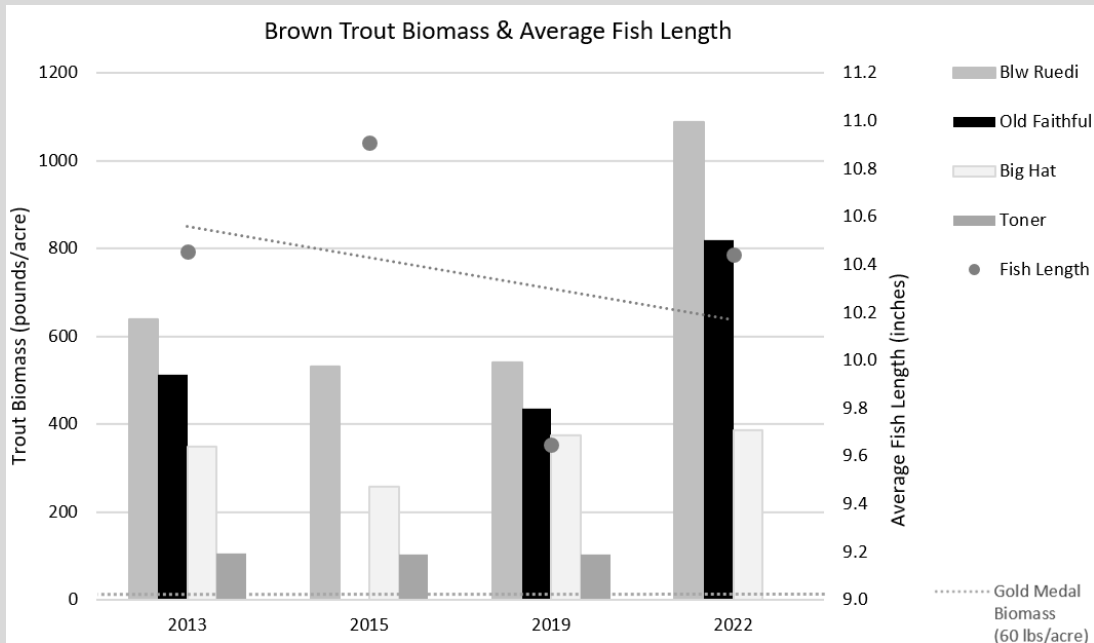


Figure 1. Increasing Trout Biomass (pounds/acre) in the four survey reaches well exceeds the Gold Medal threshold, meanwhile average fish length is decreasing. These are defining characteristics of an overpopulated fishery.

Gold Medal Trout Waters are defined and managed to provide outstanding angling opportunities for quality trout (12 trout \geq 14 inches) and abundant fish (60+ pounds/acre). The dense population of brown trout (764 pounds/acre average biomass in 2022) and declining average fish length indicates the Fryingpan River is overpopulated (Figure 1). At the same time, Gold Medal Trout abundance is decreasing in multiple river reaches (Figure 2). Issues associated with overpopulation include declining growth of individuals resulting in low growth (stunting), reduced biodiversity due to high competition and predation on other species, and increased risk of significant disease outbreaks that could lead to uncontrolled population declines.

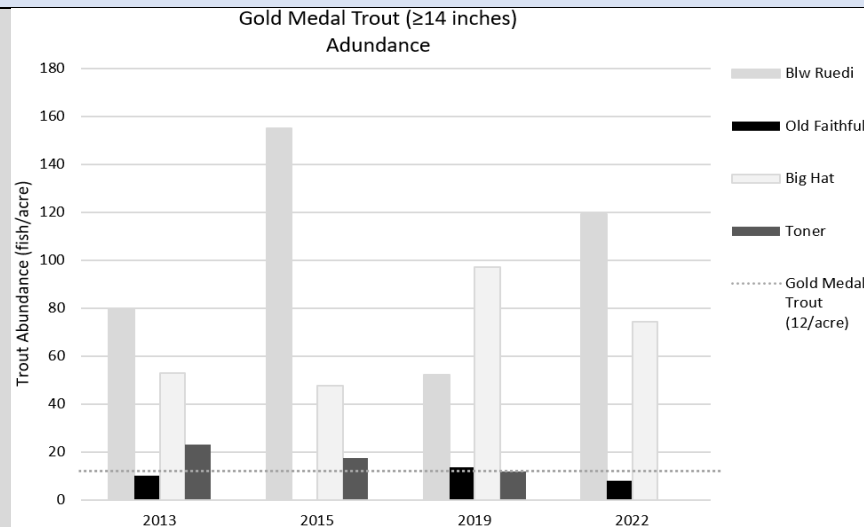


Figure 2. Gold Medal Trout (quality trout ≥ 14 inches) abundance (fish/acre) is declining in half of the survey reaches and the station with the most abundant trout is no longer meeting Gold Medal Biomass threshold (60 pounds/acre).

Historically, rainbow trout were a significant contributor to the high quality fishing experience in the Gold Medal Fryingpan River. However, in the 1980s, rainbow trout started to decline and brown trout began to increase (Figure 3). By the late 1990s, Whirling Disease (WD) became the primary cause of the loss of rainbow trout, as WD is caused by a parasite, which brown trout had evolved a natural resistance to in their native range. To address this, CPW developed WD-resistant rainbow trout to stock into infected waters. However, despite the stocking of these fingerling rainbow trout annually for 10 years, rainbow trout are rare. Current CPW research demonstrates that brown trout density will impact the success of wild rainbow trout recovery efforts through competition and predation in densely populated waters.

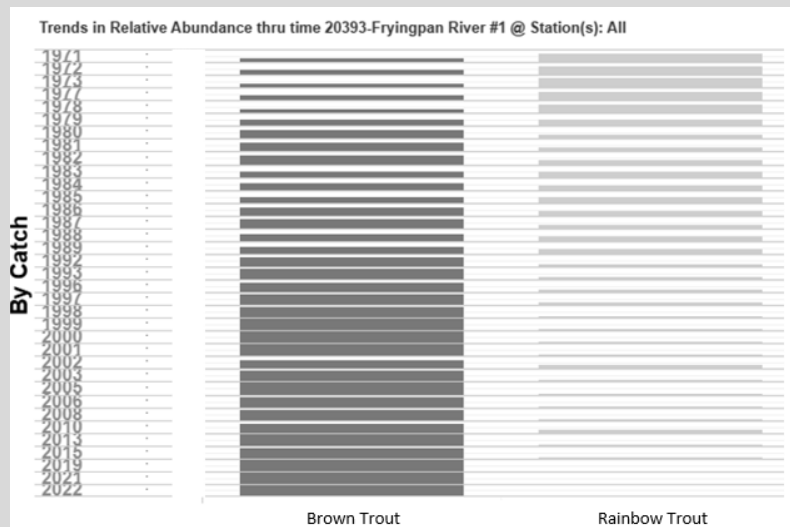


Figure 3. Relative abundance of Brown Trout and Rainbow trout depicted by bar density in the Fryingpan River in 1971-2022. Rainbow trout drastically decline in this period and are currently rare in the trout fishery.

Biological monitoring demonstrates the population of brown trout in the river needs a harvest management change to ensure that the Gold Medal fishery resource in the Fryingpan River persists as a high-quality trout fishery. In alignment with CPW's Strategic Plan (Goals I, V, VI) and our internal Gold Medal Directive (OW-10), removing the restriction on harvest is an important step in addressing brown trout overpopulation in the Fryingpan River. Increased harvest complements other management

efforts including stocking rainbow trout for increased angling opportunities, collaborating with Fryingspan stakeholders, ongoing angler surveys, and monitoring and adapting management actions to improve the growth and recruitment of Gold Medal trout throughout the lower Fryingspan River.

STATE LAW REQUIRES CPW TO SOLICIT INPUT FROM STAKEHOLDERS THAT MAY BE AFFECTED POSITIVELY OR NEGATIVELY BY THE PROPOSED RULES. THE FOLLOWING STAKEHOLDERS HAVE BEEN ADVISED OF AND INVITED TO PROVIDE INPUT ON THE REGULATORY CHANGES PROPOSED IN THIS ISSUE PAPER:

***IT IS ASSUMED THAT ALL NECESSARY INTERNAL PARTIES HAVE BEEN NOTIFIED*.**

Public presentations of fisheries information showed the developing issue of increasing brown trout densities observed in CPW's surveys. Public perspectives and angler experience were documented through in-person contacts with anglers on the Fryingspan River during angler surveys in 2023 and 2024 (Figure 4). The information gathered informed the regulation change proposal. In May 2024, a public meeting advertised on social media and in local newspapers provided information about the proposed regulation change. Feedback from the audience was positive and respondents to an online survey and comment form was supportive of removing harvest restrictions. Additionally, we solicited input from local angling organizations (Roaring Fork Fishing Guide Alliance) and the local watershed advocacy organization (Roaring Fork Conservancy). A significant majority of the anglers and river advocates support the removal of restrictive harvest on brown trout.

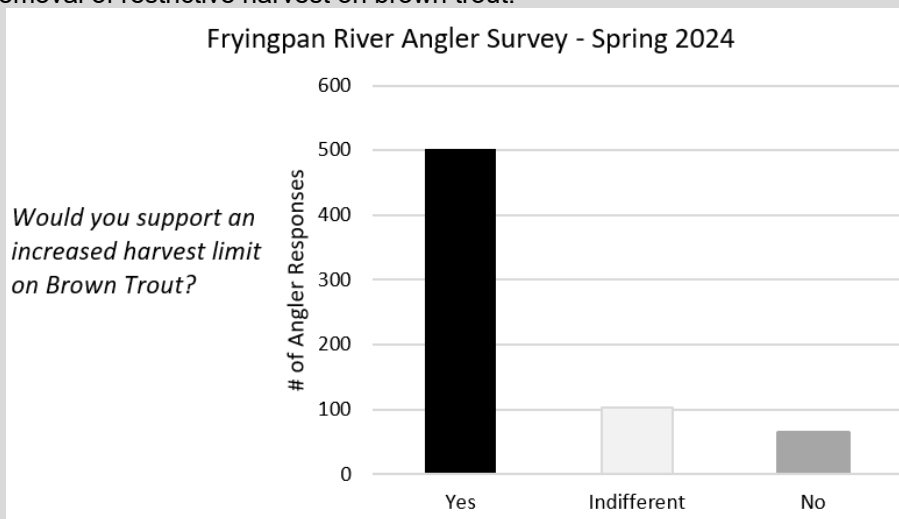


Figure 4. This spring, creel clerks surveyed 607 anglers to see if they would support an increased harvest limit on Brown Trout. The majority of respondents would support an increased harvest limit, 90%.

ALTERNATIVES: (POSSIBLE OUTCOMES or POSSIBLE REGULATIONS):

1. *Preferred Alternative*:

CPW staff recommends amending Chapter W-01, Article I, #157.a. to read as follows:

1. Fishing is by artificial flies and lures only.
2. All trout (except brown trout) must be returned to the water immediately upon catch.
3. ~~The bag and possession limit and maximum size for brown trout is two fish, 14 inches in length.~~

2. Status quo: No change.

Issue Raised by:	Kendall Bakich, Area 8 Aquatic Biologist
Author of the issue paper	

(if different than person raising the issue):	
CC:	Area 8 Staff; Ben Felt, NW Senior Aquatic Biologist; Matt Nicholl, Aquatic Section Manager
APPROVED FOR FURTHER CONSIDERATION BY:	Matt Nicholl
REQUIRES NEW SPACE IN THE BROCHURE?	YES
ARE ADEQUATE STAFF AND FUNDING RESOURCES AVAILABLE TO IMPLEMENT?	YES
REGION, BRANCH, OR SECTION LEADING IMPLEMENTATION	Aquatic Section, Area 8
RECOMMENDED FOR CONSENT AGENDA?	NO

ISSUES SUBMITTAL FORM

Date: 08/09/2024

ISSUE:	Should fishing regulations at Horsetooth Reservoir be changed from statewide regulations to bag, possession, and size limits of two fish, 21-24 inches in length for walleye?
DISCUSSION (FACTS AND FIGURES, EXPLANATION OF ISSUE):	
<p>Horsetooth Reservoir is located in the foothills west of Fort Collins. Currently, statewide bag and possession limits for walleye apply at Horsetooth Reservoir. Recreation at Horsetooth Reservoir is managed by Larimer County, and CPW's primary fisheries management goal is to maintain Horsetooth Reservoir as a backup walleye brood water. From 1997 to 2020, the walleye population in the reservoir was sustained through natural reproduction, with no walleye stocking taking place. Beginning around 2010, rainbow smelt began showing up in CPW standardized sampling surveys, and their population increased dramatically. Rainbow smelt served as a great prey item for adult walleye, but as rainbow smelt numbers increased, walleye recruitment began to decrease. This decreased recruitment started around 2017 due to competition between rainbow smelt and juvenile walleye along with predation from adult rainbow smelt on juvenile walleye (Figure 1).</p> <p>Loss of recruitment led CPW to begin stocking walleye fry in 2021 in an attempt to bolster recruitment in the face of rainbow smelt predation and competition. CPW also began stocking ten-inch rainbow trout to put additional predation pressure on rainbow smelt in an attempt to keep rainbow smelt numbers at a manageable level. Rainbow smelt numbers have decreased over the last five years, but walleye recruitment has remained limited. Therefore, Horsetooth Reservoir has an aging walleye size structure and decreasing brood stock potential. CPW data suggests female walleye mature at age 3 or 4 in Horsetooth Reservoir and can live up to 24 years.</p> <p>Based on standardized sampling data CPW staff believes a more restrictive walleye regulation is needed to reduce potential harvest and help protect brood walleye in Horsetooth Reservoir. CPW staff is trying to ensure Horsetooth Reservoir meets its walleye management goal while still providing viable sport fishing opportunities and some level of angler harvest. CPW staff believes a harvest slot limit of 21 – 24 inches, i.e. anglers can only harvest walleye between 21 – 24 inches, with a reduced bag and possession limit of 2 walleye will help protect the walleye population and move the fishery toward its management goal as a walleye brood water. The harvest slot of 21 – 24 inches will protect female walleye for their first several years of sexual maturity, which will ensure they have several years of spawning potential prior to being susceptible to angler harvest. Once they reach 21 inches they will be vulnerable to angler harvest, but adults greater than 24 inches, with high reproductive potential, will be protected from harvest. Reducing the bag and possession limit to two walleye decreases the number of walleye that can be harvested and keeps more spawning/brood fish in the reservoir.</p>	



Length Frequency from HORSETOOTH RESERVOIR (55168)
For WALLEYE

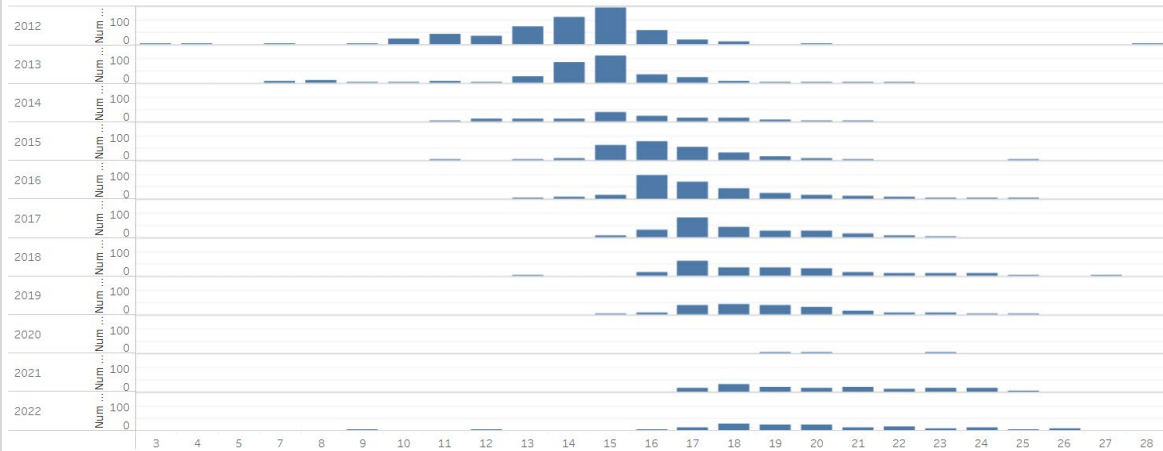


Figure 1. Length frequency histogram of number of walleye per one inch length bin by year from 2012-2022.

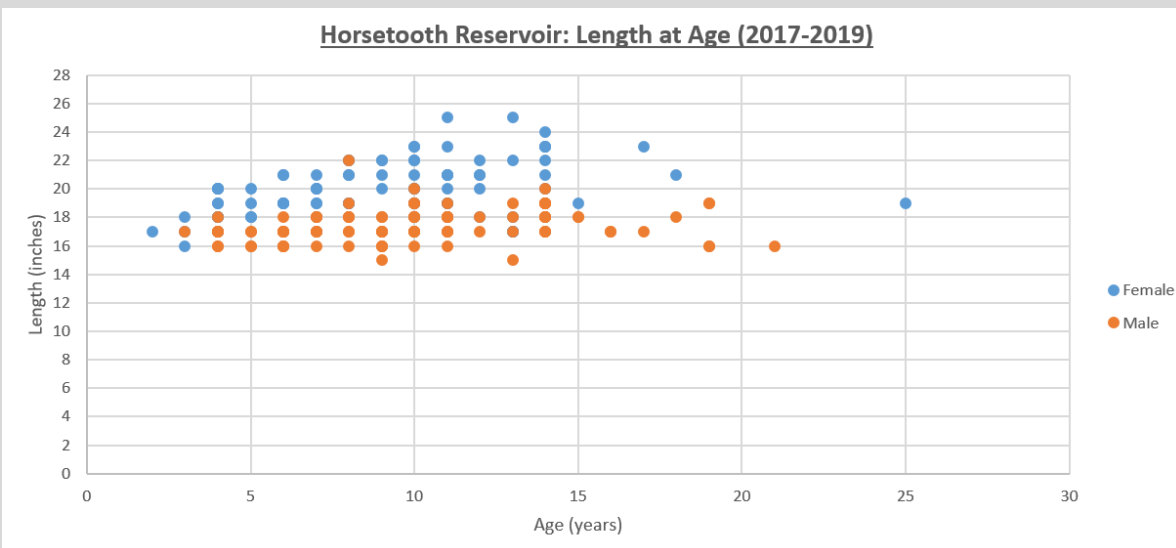


Figure 2. Length at age data for Horsetooth Reservoir walleye.

STATE LAW REQUIRES CPW TO SOLICIT INPUT FROM STAKEHOLDERS THAT MAY BE AFFECTED POSITIVELY OR NEGATIVELY BY THE PROPOSED RULES. THE FOLLOWING STAKEHOLDERS HAVE BEEN ADVISED OF AND INVITED TO PROVIDE INPUT ON THE REGULATORY CHANGES PROPOSED IN THIS ISSUE PAPER:

***IT IS ASSUMED THAT ALL NECESSARY INTERNAL PARTIES HAVE BEEN NOTIFIED*.**

[List stakeholder groups and briefly summarize comments received]

- CPW Aquatic Section
- CPW Area 4
- Larimer County
- Northern Water
- CPW held a public meeting on June 20th and there was no opposition to the proposed regulation changes.

<ul style="list-style-type: none"> CPW is currently conducting a creel survey in 2024 at Horsetooth Reservoir in which anglers are asked about their preferences when it comes to walleye fishing. 	
ALTERNATIVES: (POSSIBLE OUTCOMES or POSSIBLE REGULATIONS):	
<ol style="list-style-type: none"> *Preferred Alternative*: Change the walleye regulation from statewide bag and possession (5 fish) to: <ol style="list-style-type: none"> Bag and possession and size limit for walleye is two fish, 21-24 inches in length. Status quo – No change 	
Issue Raised by:	NE Region Aquatics
Author of the issue paper (if different than person raising the issue):	Kyle Battige
CC:	Mark Sandersen, Josh Nehring, Jason Surface, Justin Foster, Matt Nicholl
APPROVED FOR FURTHER CONSIDERATION BY:	Matt Nicholl
REQUIRES NEW SPACE IN THE BROCHURE?	YES
ARE ADEQUATE STAFF AND FUNDING RESOURCES AVAILABLE TO IMPLEMENT?	YES
REGION, BRANCH, OR SECTION LEADING IMPLEMENTATION	NE Aquatics
RECOMMENDED FOR CONSENT AGENDA?	NO

ISSUES SUBMITTAL FORM

Date: 08/09/2024

ISSUE:	Should Colorado Parks and Wildlife change fishing regulations at Lake Granby to allow for more lake trout and less kokanee salmon harvest?
DISCUSSION (FACTS AND FIGURES, EXPLANATION OF ISSUE):	
<p>CPW staff is recommending that bag and possession limits of lake trout be increased at Lake Granby. Furthermore, we recommend that the snagging season for kokanee be removed and that more conservative bag and possession limits be in place year-round for kokanee salmon. These changes are recommended to reduce overly abundant lake trout in Lake Granby and further manage for trophy lake trout opportunities while also protecting the kokanee salmon population, which is critically important for angling, the Lake Granby food web, and statewide kokanee production.</p> <p>Lake Granby hosts the largest population and highest density of lake trout (aka mackinaw) in Colorado, regularly producing fish in excess of 30". The Lake Granby fishery is the product of a complex food web consisting of zooplankton, mysis shrimp, kokanee salmon, rainbow trout, lake trout, and other incidental species. Due to their long life span and voracious predatory behavior, this species can easily outstrip available prey resources. Thus, management of the fishery in Lake Granby consists of a balancing act between producing desirable trophy lake trout by providing an ample prey base, while simultaneously avoiding over-predation of that prey base.</p> <p>Kokanee are the most valuable prey item for the production and maintenance of the trophy lake trout fishery in Lake Granby. In past decades, this species supported a popular recreational fishery at Lake Granby; however, the lake trout population and resulting predation pressure in more recent years have diminished the availability of kokanee to recreational anglers. CPW stocks 1 million kokanee fry annually in the Colorado River upstream of the Lake Granby inlet, and also harvests kokanee eggs from the adult spawning run every fall in the same location. Due to recent declines in other kokanee populations and spawning operations in Colorado, it is of vital importance to attempt to restore a higher volume of egg production from the Lake Granby spawning run. Given the current state of the kokanee population, CPW staff believes that the current bag and possession limits and the snagging season on Lake Granby are no longer appropriate, and that changes need to be made to restore this essential component of the fishery. In addition, the kokanee regulations for Lake Granby are difficult for the public to understand. The proposed new regulations will be more streamlined and customer-friendly.</p> <p>Many other well-known destination lake trout fisheries in the Western U.S. have adopted liberalized harvest regulations for lake trout in recent years in an attempt to restore a healthier predator-prey balance, and these changes have produced positive benefits for kokanee and lake trout population within those waters. For more detailed analyses of all of these management considerations and challenges, please refer to the Lake Granby Fishery Management Report on CPW's website.</p>	
STATE LAW REQUIRES CPW TO SOLICIT INPUT FROM STAKEHOLDERS THAT MAY BE AFFECTED POSITIVELY OR NEGATIVELY BY THE PROPOSED RULES. THE FOLLOWING STAKEHOLDERS HAVE BEEN ADVISED OF AND INVITED TO PROVIDE INPUT ON THE REGULATORY CHANGES PROPOSED IN THIS ISSUE PAPER:	
IT IS ASSUMED THAT ALL NECESSARY INTERNAL PARTIES HAVE BEEN NOTIFIED.	
<ul style="list-style-type: none">• Anglers and the general public. CPW held a well-attended public meeting on Friday, March 15, 2024 in which this and additional information was presented, followed by a discussion of the need for a liberalized harvest regulation for lake trout on Lake Granby. Most people at the meeting supported the proposed lake trout regulation changes and recognized the challenges the overly abundant lake trout population presents to angling and the overall fishery. A few anglers expressed concerns about increasing bag and possession limits but supported the more protective regulation on larger lake trout. The correspondence received since the meeting has also been generally supportive of the proposed lake trout regulation changes. There has been unanimous support for proposed changes to the kokanee regulations.	

- United States Forest Service, Arapaho National Recreation Area staff. CPW has participated in multiple interagency meetings, which included local staff from both agencies in which possible angling regulation changes have been described and discussed. The USFS and the Arapaho National Recreation Area staff are supportive of these proposed regulation changes.

ALTERNATIVES: (POSSIBLE OUTCOMES or POSSIBLE REGULATIONS):

1. ***Preferred Alternative*** Increase the daily bag and possession limit of lake trout, reduce the kokanee bag limit and eliminate the snagging season at Lake Granby. Change CPW Regulation #108(B)(234) to read:

234. Lake Granby – Grand County

- a. The bag and possession limit for lake trout is ~~four~~ 12 fish, only one of which may be greater than 24".
 - b. ~~From January 1 through August 31, t~~The bag and possession limit for trout (except lake trout) and kokanee salmon is four fish, singly or in aggregate.
 - ~~c. From September 1 through December 31, the bag and possession limit for trout (except lake trout) is four fish, singly or in aggregate.~~
 - ~~d. From September 1 through December 31, the bag and possession limit for kokanee salmon is 10 fish.~~
 - ~~e. Snagging of kokanee salmon is permitted in Lake Granby only from September 1 through December 31 except snagging is prohibited in Columbine Bay from the inlet of Twin Creek upstream.~~
 - f. Gaffs and tail snares are prohibited.
 - g. Ice fishing shelters must be portable.
 - h. In Columbine Bay from the inlet of Twin Creek upstream:
 1. Fishing is prohibited from October 15 through November 30.
2. Status quo: No change.

Issue Raised by:	Jon Ewert (Area 9 Aquatic Biologist)
Author of the issue paper (if different than person raising the issue):	
CC:	Clayton McCall, Jeromy Huntington, Ben Felt
APPROVED FOR FURTHER CONSIDERATION BY:	Matt Nicholl
REQUIRES NEW SPACE IN THE BROCHURE?	NO
ARE ADEQUATE STAFF AND FUNDING RESOURCES AVAILABLE TO IMPLEMENT?	YES
REGION, BRANCH, OR SECTION LEADING IMPLEMENTATION	Aquatic Section
RECOMMENDED FOR CONSENT AGENDA?	NO

ISSUES SUBMITTAL FORM

Date: 08/09/2024

ISSUE:	Should fishing regulations at Upper Sand Creek Lake, Lower Sand Creek Lake, Little Sand Creek Lake, Sand Creek, Jones Creek, Little Sand Creek, McKenney Creek, Smith Creek, Cold Creek, Rito Hondo Reservoir, and Rito Hondo Creek be changed to artificial flies and lures only and all trout must be returned to the water immediately upon catch?
DISCUSSION (FACTS AND FIGURES, EXPLANATION OF ISSUE):	
<p>Statewide bag and possession limits apply to all waters in the Sand Creek drainage, Rito Hondo Reservoir, and Rito Hondo Creek above the reservoir. These waters have been reclaimed or are being reclaimed from non-native trout and stocked with native Rio Grande cutthroat trout. Implementing a catch-and-release and fly-and-lure-only regulation would decrease the time needed to establish self-sustaining populations. Other genetically pure Rio Grande cutthroat trout populations in the Rio Grande basin allow catch-and-release and fly-and-lure-only fishing.</p> <p>The Rio Grande cutthroat trout is a Colorado State Species of Special Concern Tier 1 State Wildlife Action Plan (SWAP) species. The U.S. Fish and Wildlife Service (USFWS) is currently evaluating the species for listing under the Endangered Species Act, and a decision is expected this coming year.</p> <p><u>Sand Creek Drainage:</u> Upper Sand Creek Lake, Lower Sand Creek Lake, Little Sand Creek Lake, Sand Creek, Jones Creek, Little Sand Creek, McKenney Creek, Smith Creek, and Cold Creek are all waters in the Sand Creek drainage.</p> <p>Over a decade ago, CPW and the National Parks Service identified the Sand Creek drainage as a viable basin for creating a native Rio Grande cutthroat trout metapopulation. In 2020, the non-native and hybrid cutthroat removal effort began after all the planning approvals and funding were in place. The upper portion of the basin was reclaimed in 2020, and the stocking of pure native Rio Grande cutthroat trout began in 2021. The lower portion of the basin will be reclaimed in August of 2024 and stocked with Rio Grande cutthroat trout in 2025.</p> <p><u>Rito Hondo Reservoir and Rito Hondo Creek above Rito Hondo Reservoir</u> were reclaimed from non-native fish in 2023. Rito Hondo Reservoir and Rito Hondo Creek will be stocked with genetically pure Rio Grande cutthroat trout in 2024</p>	
<p>STATE LAW REQUIRES CPW TO SOLICIT INPUT FROM STAKEHOLDERS THAT MAY BE AFFECTED POSITIVELY OR NEGATIVELY BY THE PROPOSED RULES. THE FOLLOWING STAKEHOLDERS HAVE BEEN ADVISED OF AND INVITED TO PROVIDE INPUT ON THE REGULATORY CHANGES PROPOSED IN THIS ISSUE PAPER:</p> <p>*IT IS ASSUMED THAT ALL NECESSARY INTERNAL PARTIES HAVE BEEN NOTIFIED*.</p> <p>[List stakeholder groups and briefly summarize comments received] Support from CPW Aquatic Section, Area 17, Great Sand Dunes National Park, US Fish and Wildlife Service, US Forest Service, and San Luis Valley Trout Unlimited.</p> <p>Public meetings were held in Monte Vista on June 13th and in Westcliffe on June 10th. All attendees supported the proposed regulation changes.</p>	
ALTERNATIVES: (POSSIBLE OUTCOMES or POSSIBLE REGULATIONS):	
<ol style="list-style-type: none"> 1. *Preferred Alternative*: For all waters mentioned above: <ol style="list-style-type: none"> a. Fishing is by artificial flies and lures only b. All trout must be returned to the water immediately upon catch 2. Status quo. Statewide bag and possession limits apply. 	

Issue Raised by:	SW Region Aquatics
Author of the issue paper (if different than person raising the issue):	Estevan Vigil, Area 17 Aquatic Biologist
CC:	Josh Nehring, Matt Nicholl, Harry Crockett, Jenn Logan, Rick Basagotia, Leon Martinez, Brent Woodward.
APPROVED FOR FURTHER CONSIDERATION BY:	Matt Nicholl
REQUIRES NEW SPACE IN THE BROCHURE?	YES
ARE ADEQUATE STAFF AND FUNDING RESOURCES AVAILABLE TO IMPLEMENT?	YES
REGION, BRANCH, OR SECTION LEADING IMPLEMENTATION	SW Aquatic Section
RECOMMENDED FOR CONSENT AGENDA?	NO

ISSUES SUBMITTAL FORM

Date: 08/09/2024

ISSUE:	Should CPW remove the harvest restriction on Rocky Fork Creek in Pitkin County?
DISCUSSION (FACTS AND FIGURES, EXPLANATION OF ISSUE):	
<p>CPW recommends removing the special fishing regulations (catch-and-release for cutthroat trout, flies and lures only) on Rocky Fork Creek because recent genetic data show that the cutthroat trout present are not native. Furthermore, this site is very remote and receives low fishing pressure, so allowing the harvest of cutthroat is not expected to negatively affect the population.</p> <p>Rocky Fork Creek was believed to harbor an indigenous population of cutthroat trout based upon a single visit to the stream when meristics (physical characteristics) were the sole tool to identify different species of cutthroat trout. Anecdotal documentation of the visit reported that one trout specimen was collected and examined at the time.</p> <p>In 2008, CPW aquatic staff visited the creek and collected tissue for genetic sampling to confirm the lineage or subspecies of cutthroat trout present. Aquatic personnel documented unusual spotting patterns not characteristic of native Colorado cutthroat trout on a few of the individual fish. Modern genetic techniques identified that the cutthroat are Yellowstone cutthroat trout, a non-native cutthroat trout in Colorado. A review of historical stocking activities revealed that Yellowstone cutthroat trout were stocked in 1939, while there were two earlier stockings of unspecified cutthroat trout in the early 1930s.</p> <p>The remote nature of the stream and the difficulty of accessing it limits fishing pressure. Thus, harvest of these non-native cutthroat trout under the new proposed regulation is not expected to negatively affect the population. This creek is also not identified as a Native Cutthroat Water in Colorado. Neither a catch-and-release regulation nor a restrictive harvest regulation is warranted.</p>	
STATE LAW REQUIRES CPW TO SOLICIT INPUT FROM STAKEHOLDERS THAT MAY BE AFFECTED POSITIVELY OR NEGATIVELY BY THE PROPOSED RULES. THE FOLLOWING STAKEHOLDERS HAVE BEEN ADVISED OF AND INVITED TO PROVIDE INPUT ON THE REGULATORY CHANGES PROPOSED IN THIS ISSUE PAPER:	
IT IS ASSUMED THAT ALL NECESSARY INTERNAL PARTIES HAVE BEEN NOTIFIED.	
<p>Internal: Area 8, NW Region External: This proposed regulation change was discussed at several public fish management meetings since 2008. Anglers surveyed during 2024 Spring Creel Surveys on the Fryingpan River have not raised serious concern about the removal of catch and release regulation once informed of the non-native status of the cutthroat trout.</p>	
ALTERNATIVES: (POSSIBLE OUTCOMES or POSSIBLE REGULATIONS):	
<p>1. *Preferred Alternative* CPW staff recommends removing Chapter W-01, Article I, #358 as follows: Rocky Fork Creek – Pitkin County a. Fishing is by artificial flies and lures only. b. All cutthroat trout must be returned to the water immediately upon catch.</p> <p>2. Status Quo: No Change.</p>	
Issue Raised by:	Area 8 and Aquatics Staff
Author of the issue paper (if different than person raising the issue):	Kendall Bakich, Area 8 Aquatic Biologist
CC:	Area 8 Staff; Ben Felt, NW Senior Aquatic Biologist; Matt Nicholl, Aquatic Section Manager, NW Region
APPROVED FOR FURTHER CONSIDERATION BY:	Matt Nicholl
REQUIRES NEW SPACE IN THE BROCHURE?	NO

ARE ADEQUATE STAFF AND FUNDING RESOURCES AVAILABLE TO IMPLEMENT?	YES
REGION, BRANCH, OR SECTION LEADING IMPLEMENTATION	Aquatic Section
RECOMMENDED FOR CONSENT AGENDA?	NO

ISSUES SUBMITTAL FORM

Date: 08/09/2024

ISSUE:	Should Colorado Parks and Wildlife (CPW) implement additional special regulations for wiper (i.e. Palmetto bass) at Union Reservoir?
DISCUSSION (FACTS AND FIGURES, EXPLANATION OF ISSUE):	
<p>Union Reservoir, located east of Longmont, is an 800-acre water storage reservoir that provides public sport fishing opportunities for walleye, wiper, rainbow trout, catfish, and other species. Recreational management is provided by the City of Longmont while CPW supports this property with law enforcement and fishery management.</p> <p>According to 2023 angler creel survey data, angler harvest for wiper at Union Reservoir has surpassed what can be allocated from our hatchery system (Figure 1). Harvest of this species has also been noted in the annual gillnet survey with the abundance of this species declining each year since 2020 (Figure 2). Wiper production generally relies on out of state fish trades with Oklahoma and Texas, thus availability of this species is limited. With a combination of evidence from the creel survey, annual gillnet data, and limited hatchery production we recommend reducing the bag and possession limit for wiper at Union Reservoir from 10 to 5 wiper larger than 15 inches. A 15-inch minimum length limit is currently in place at this reservoir.</p>	
<p>STATE LAW REQUIRES CPW TO SOLICIT INPUT FROM STAKEHOLDERS THAT MAY BE AFFECTED POSITIVELY OR NEGATIVELY BY THE PROPOSED RULES. THE FOLLOWING STAKEHOLDERS HAVE BEEN ADVISED OF AND INVITED TO PROVIDE INPUT ON THE REGULATORY CHANGES PROPOSED IN THIS ISSUE PAPER:</p> <p>*IT IS ASSUMED THAT ALL NECESSARY INTERNAL PARTIES HAVE BEEN NOTIFIED*.</p> <p>[List stakeholder groups and briefly summarize comments received]</p> <p>Internal: Area 2 DWMs, Area 2 AWM, Union Reservoir staff, Aquatic Biologist. All groups are supportive with the proposed change.</p> <p>CPW held a public meeting on June 20th and there was no opposition to the proposed regulation change.</p>	
ALTERNATIVES: (POSSIBLE OUTCOMES or POSSIBLE REGULATIONS):	
<p>1. * Preferred Alternative *</p> <ul style="list-style-type: none"> ▶ UNION RESERVOIR (CALKINS LAKE) — WELD <ul style="list-style-type: none"> 1. Min. size for wiper is 15 inches long. 2. Bag and possession limit for wiper is 5 fish. <p>2. *Status Quo*</p> <ul style="list-style-type: none"> ▶ UNION RESERVOIR (CALKINS LAKE) — WELD <ul style="list-style-type: none"> 1. Min. size for wiper is 15 inches long. 	
Issue Raised by:	Benjamin Swigle (Area 2 Aquatic Biologist) Cassandra Penn (Area 2 DWM) Chris Mettenbrink (Area 2 AAWM) Jason Duetsch (Area 2 AWM)
Author of the issue paper (if different than person raising the issue):	Benjamin Swigle
CC:	Chelsea Wilson (Union Ranger), Kyle Battige
APPROVED FOR FURTHER CONSIDERATION BY:	Matt Nicholl
REQUIRES NEW SPACE IN THE BROCHURE?	YES
ARE ADEQUATE STAFF AND FUNDING RESOURCES AVAILABLE TO IMPLEMENT?	YES
REGION, BRANCH, OR SECTION LEADING IMPLEMENTATION	Aquatic Section
RECOMMENDED FOR CONSENT AGENDA?	NO



Catch by Species

Water **53570** Union Reservoir
 Drainage **SP** County **L** Region **NE** Area **02** battigek swigleb
 Year **2023** May 1 through August 31 Analysis Method 2

Anglers	Estimates				Standard Error			
	Shore	Boat	Other	All	Shore	Boat	Other	All
Hours fished	16703	58280	0	74983	1632	8575	0	9699
Angler est.	3556	13862	0	17418	570	2074		2369

Common Name		Estimates			+/- 1.96*Stf.Err		
		Shore	Boat	All	Shore	Boat	All
PALMETTO BASS (WIPER)	Total catch	4,425	17,715	22,141	842	7,694	7,944
	Kept catch	2,719	4,376	7,095	584	1,237	1,433
	Returned catch	1,706	13,339	15,046	616	6,782	6,938
	Total catch/hr	0.26	0.30	0.30	0.04	0.12	0.09
	Kept catch/hr	0.16	0.08	0.09	0.03	0.02	0.02
	Ret. catch/hr	0.10	0.23	0.20	0.03	0.11	0.08
	Avg.Len.Kept inch	15.44	15.31	15.36			
	Avg.Len.Ret inch	12.99	13.20	13.17			

Figure 1. Results of the 2023 creel survey at Union Reservoir. Anglers harvested an estimated 7,095 wiper between May 1 and August 31, 2023.

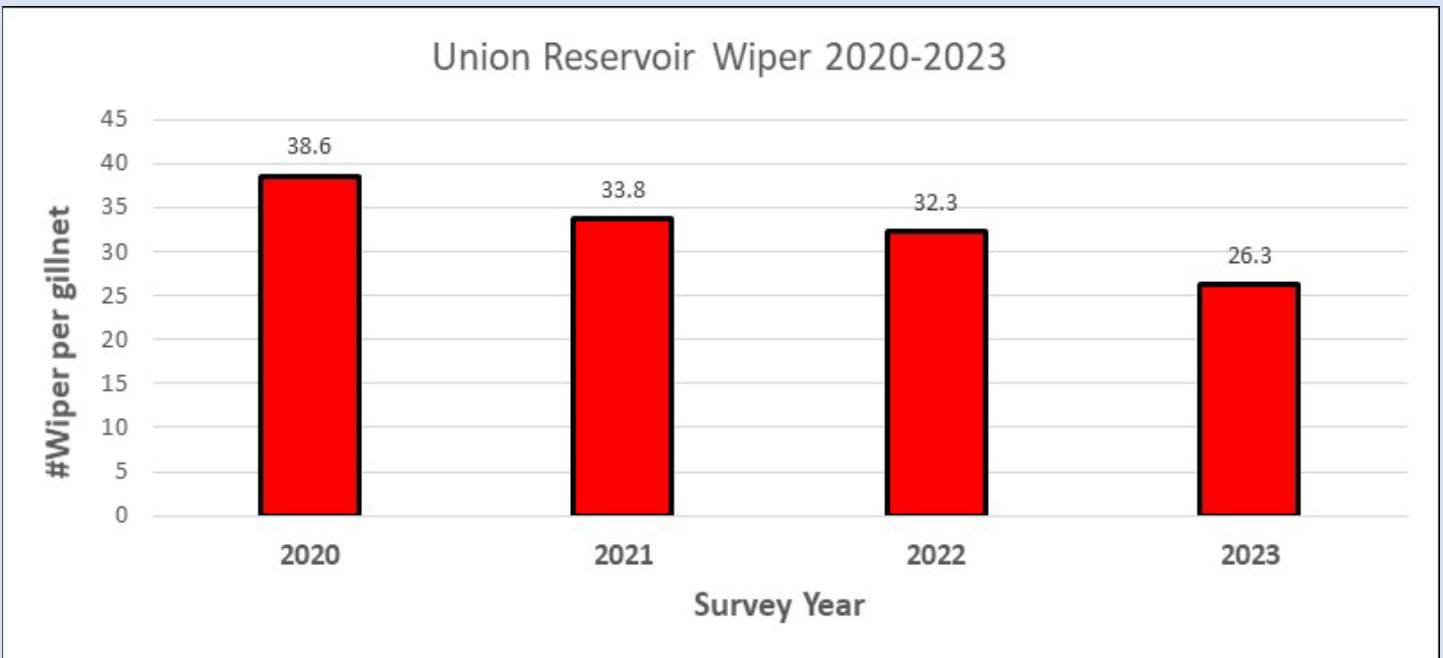


Figure 2. Abundance trends for wiper surveyed from Union Reservoir 2020-2023.

ISSUES SUBMITTAL FORM

Date: 08/09/2024

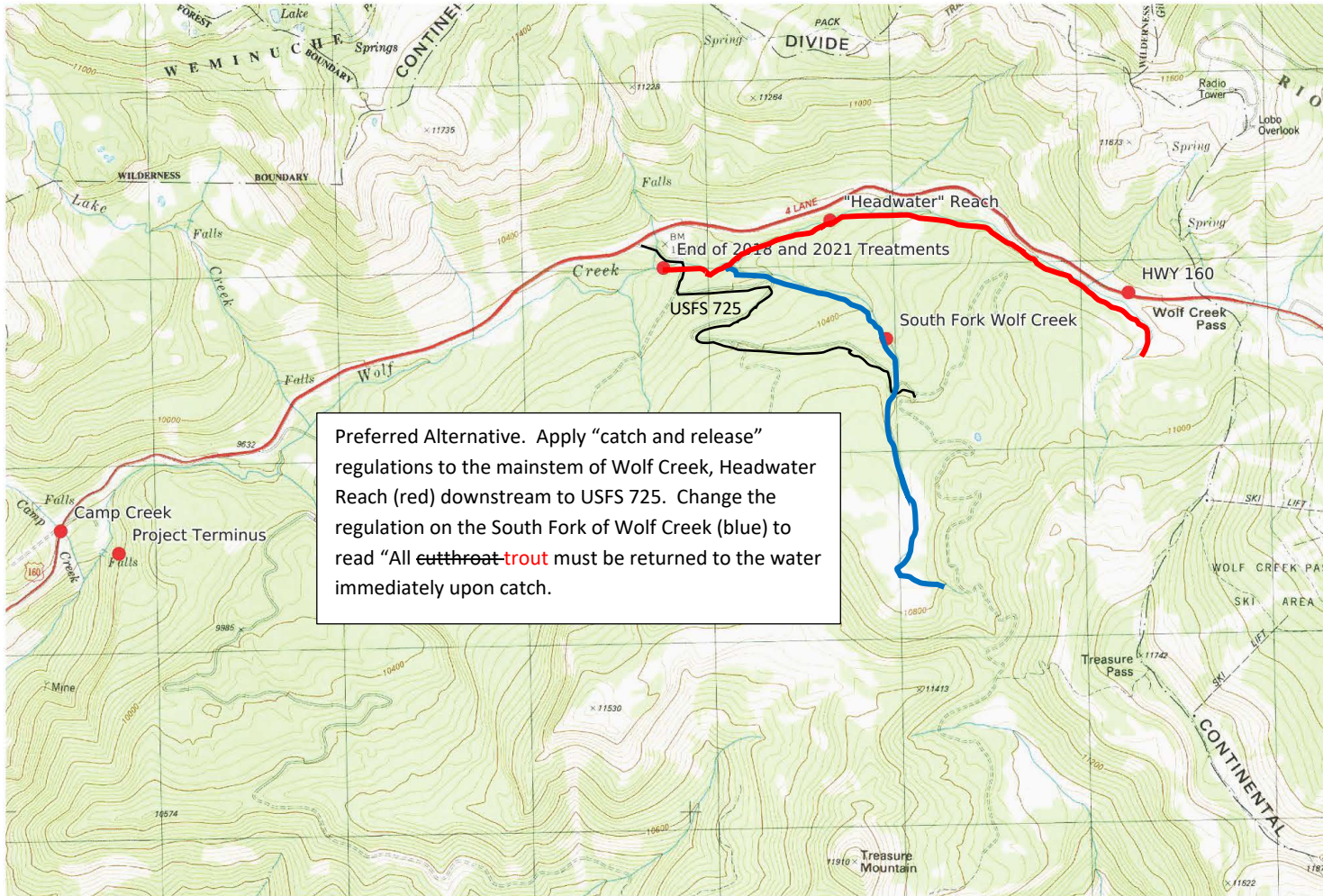
ISSUE:	Should Colorado Parks and Wildlife implement a regulation from the headwaters of Wolf Creek downstream to US Forest Service (USFS) 725 that fishing is by artificial flies and lures only, all trout must be returned to the water immediately upon catch?
DISCUSSION (FACTS AND FIGURES, EXPLANATION OF ISSUE):	
<p>A rare San Juan lineage of Colorado River Cutthroat Trout were stocked into the South Fork of Wolf Creek after a non-native fish removal effort in 2018. In addition, a reclamation project was completed in 2021 to remove non-native trout from the headwaters of Wolf Creek above the confluence with the South Fork of Wolf Creek. After that, this section was restocked with native San Juan cutthroats in 2023. Both the South Fork and Headwater reaches terminate at a waterfall just downstream of USFS 725 (see map). Within this system, the South Fork of Wolf Creek is the only portion with water-specific regulations (Fishing is by artificial flies and lures only; All cutthroat trout must be returned to the water immediately upon catch).</p> <p>Extending the South Fork regulation to all of Wolf Creek downstream to USFS 725 should avoid confusion by anglers, as the South Fork of Wolf Creek is not marked on most maps. As such, most anglers likely do not know which branch of Wolf Creek they are fishing. Applying the proposed regulation to all of Wolf Creek downstream to USFS 725 will protect this unique cutthroat trout population and provide clarity.</p> <p>Additionally, CPW recommends changing the existing South Fork of Wolf Creek regulation from “all cutthroat trout must be returned to the water immediately upon catch” to “all trout must be returned to the water immediately upon catch” to align with similar proposed regulations.</p>	
<p>STATE LAW REQUIRES CPW TO SOLICIT INPUT FROM STAKEHOLDERS THAT MAY BE AFFECTED POSITIVELY OR NEGATIVELY BY THE PROPOSED RULES. THE FOLLOWING STAKEHOLDERS HAVE BEEN ADVISED OF AND INVITED TO PROVIDE INPUT ON THE REGULATORY CHANGES PROPOSED IN THIS ISSUE PAPER:</p> <p>*IT IS ASSUMED THAT ALL NECESSARY INTERNAL PARTIES HAVE BEEN NOTIFIED*.</p> <p>[List stakeholder groups and briefly summarize comments received] Five Rivers Chapter of Trout Unlimited (meeting on March 14th) Local Angling Outfitters Media outreach (Newspaper and Social Media)</p> <p>There was no opposition to the proposed regulation changes.</p>	
ALTERNATIVES: (POSSIBLE OUTCOMES or POSSIBLE REGULATIONS):	
<p>1. *Preferred Alternative*: Adding water specific restrictions to Wolf Creek and updating the water specific restrictions to Wolf Creek, South Fork. This alternative would protect the cutthroat trout in the currently reclaimed and occupied reaches of Wolf Creek (the Headwater and South Fork reaches) and clarify the existing regulation on the South Fork.</p> <p style="color: red;">Wolf Creek – Mineral County</p> <p style="color: red;">a. From the headwaters downstream to US Forest Road 725</p> <p style="color: red;"> 1. Fishing is by artificial flies and lures only.</p> <p style="color: red;"> 2. All trout must be returned to water immediately upon catch.</p> <p>Wolf Creek, South Fork - Mineral County</p> <p> a. Fishing is by artificial flies and lures only.</p> <p> b. All cutthroat trout must be returned to the water immediately upon catch.</p>	

2. Alternative 2. Status quo. The “no change” alternative would not protect the cutthroat trout in the reclaimed Headwater reach of Wolf Creek down to USFS 725 and would not clarify the current regulation on the South Fork.

Wolf Creek, South Fork - Mineral County

- a. Fishing is by artificial flies and lures only.
- b. All cutthroat trout must be returned to the water immediately upon catch.

Issue Raised by:	Jim White, Area 15 Aquatic Biologist
Author of the issue paper (if different than person raising the issue):	
CC:	AWM Adrian Archuleta, Assistant AWM Steve McClung, DWM Doug Purcell, Acting SW Senior Aquatic Biologists Matt Nicholl and Josh Nehring
APPROVED FOR FURTHER CONSIDERATION BY:	Matt Nicholl
REQUIRES NEW SPACE IN THE BROCHURE?	YES
ARE ADEQUATE STAFF AND FUNDING RESOURCES AVAILABLE TO IMPLEMENT?	YES
REGION, BRANCH, OR SECTION LEADING IMPLEMENTATION	SW Aquatics
RECOMMENDED FOR CONSENT AGENDA?	NO



Mercator Projection
 WGS84
 UTM Zone 13S
 CALTOPO

