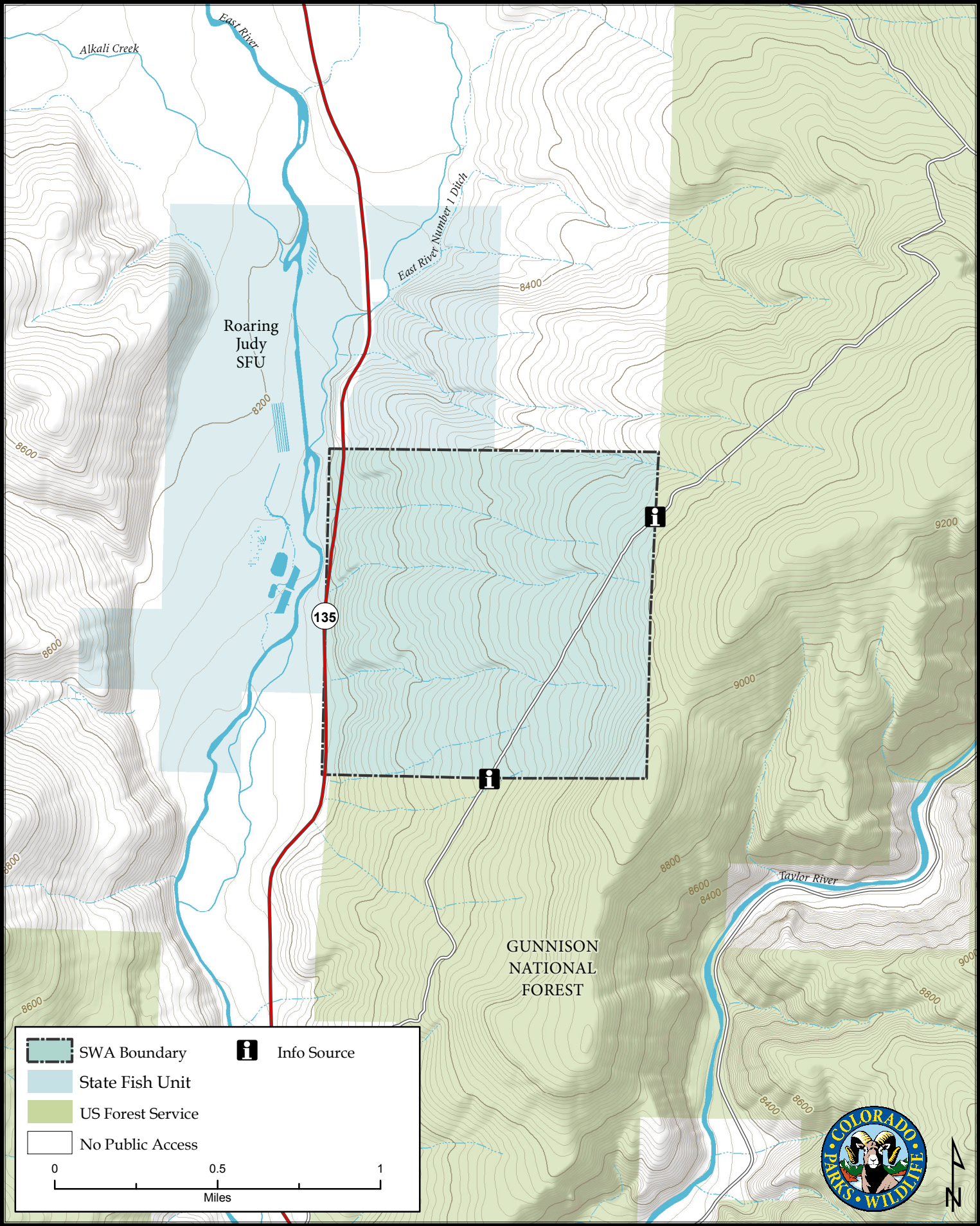
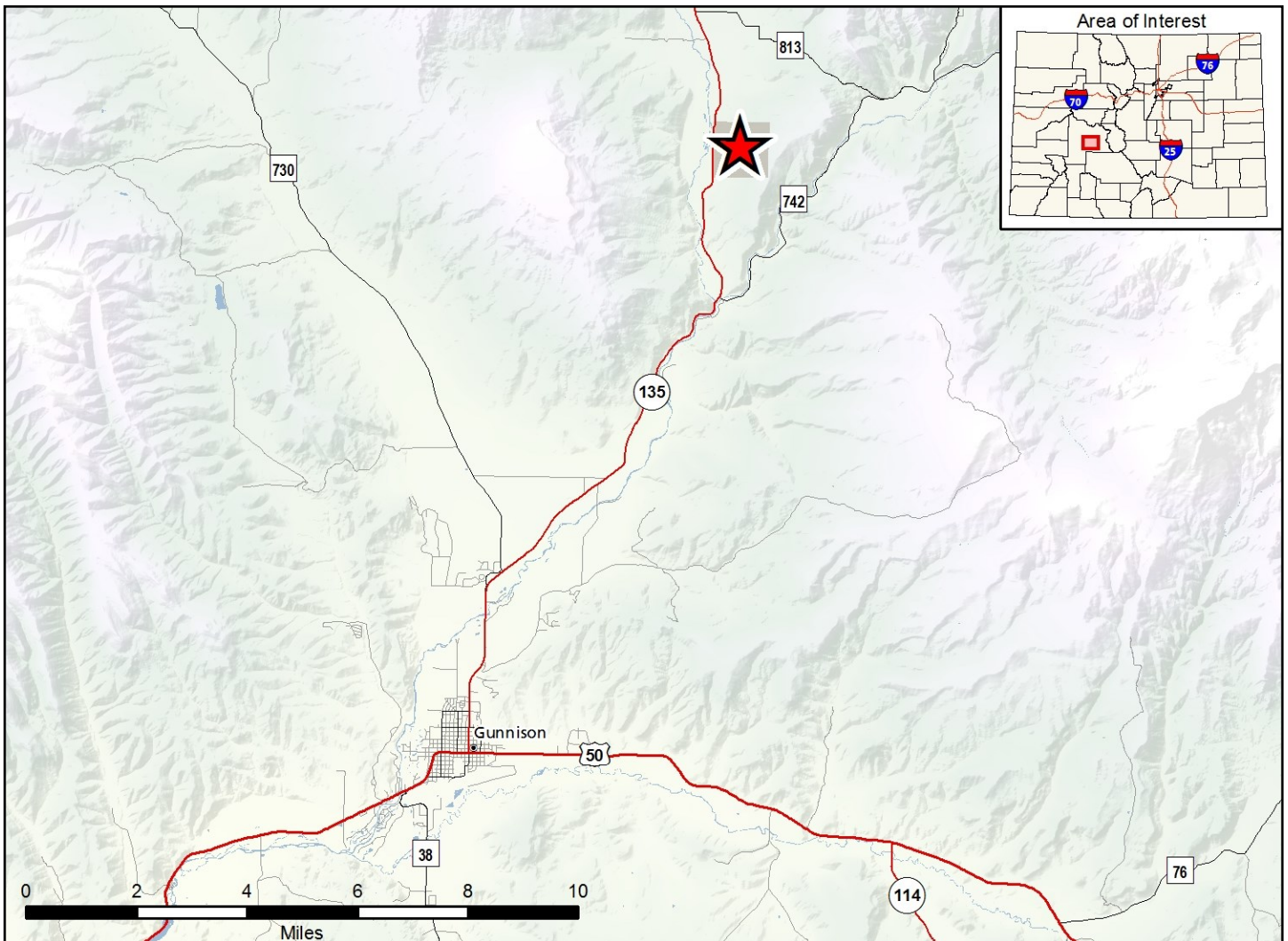


Almont Triangle State Wildlife Area

Map Updated: 2/15/2019





Almont Triangle SWA - Gunnison County

From Gunnison, go 10 miles north on Highway 135 to Almont. Continue on Highway 135, 0.8 mile

Wildlife Area Offers:

Hunting: Deer, Elk, Bighorn Sheep, Dusky (blue) Grouse

Recreation: Hiking, Wildlife Viewing

Regulations:

In addition to those restrictions listed in regulation #900 the below listed provisions or restrictions apply (see Chapter 9, <http://cpw.state.co.us/aboutus/Pages/Regulations.aspx>).

- A. Public access is prohibited from December 1 through April 30.

More Information:

CPW Office (Gunnison): (970) 641 – 7060

CPW Website: <http://cpw.state.co.us>