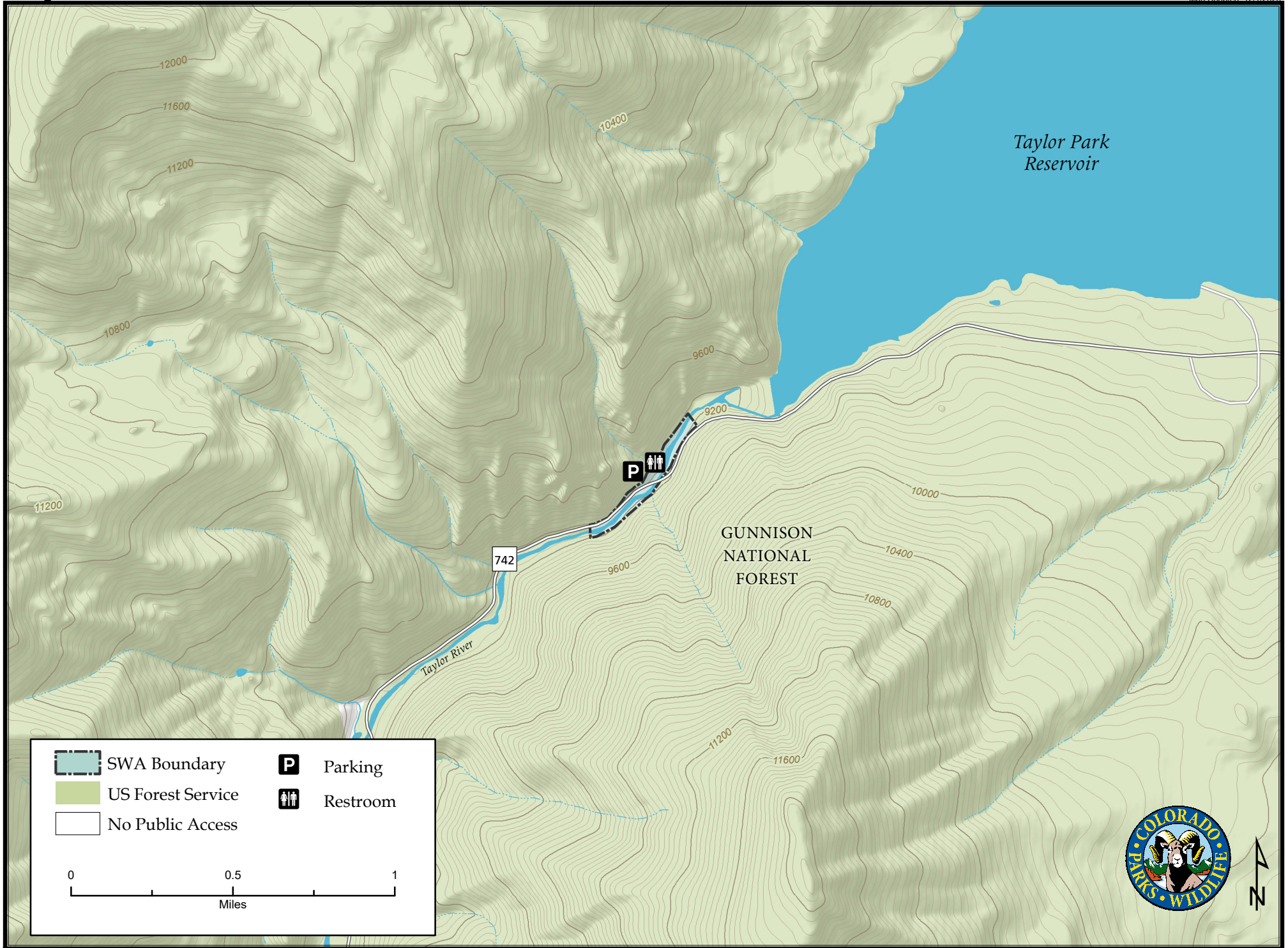
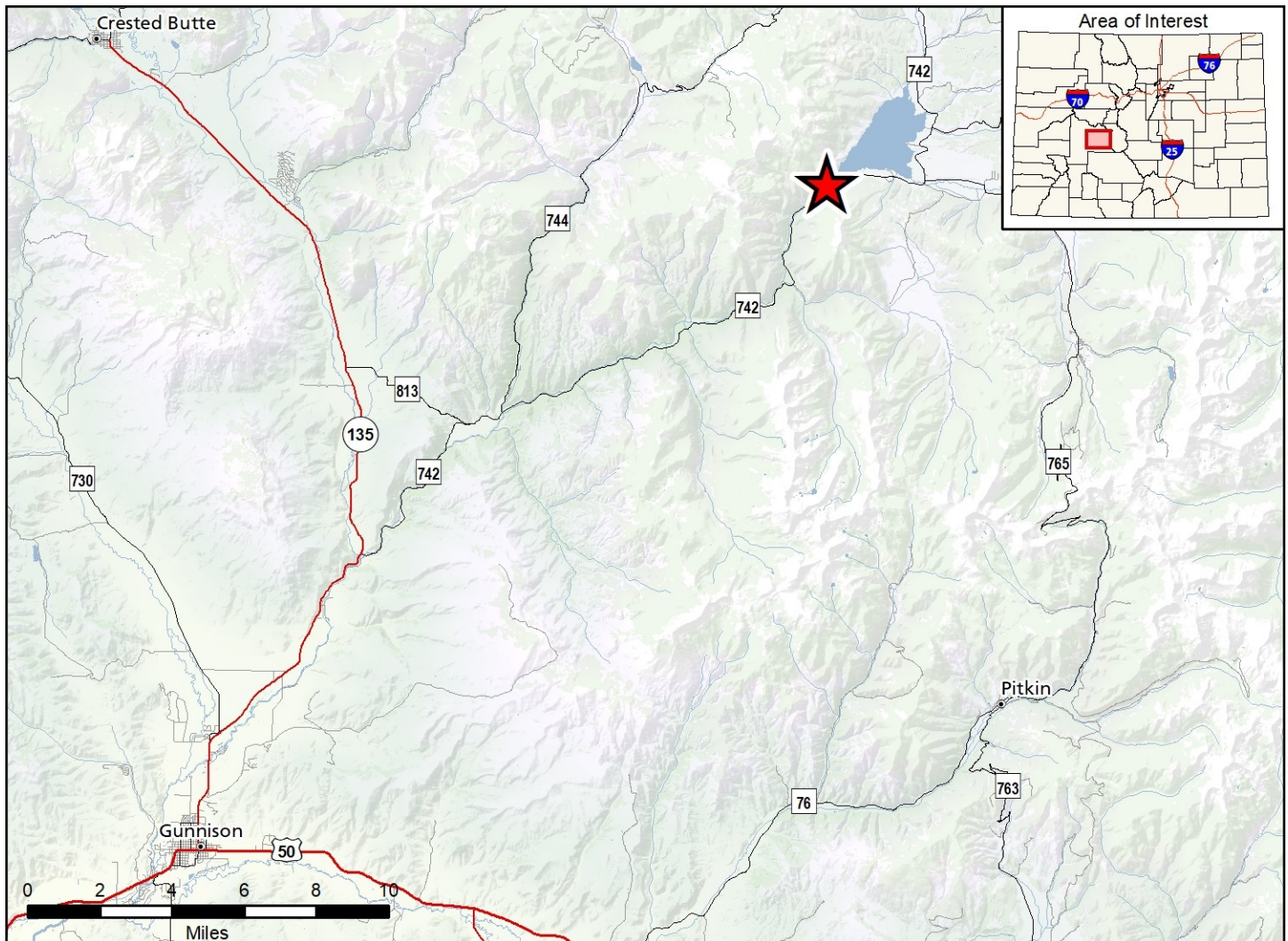


Taylor River State Wildlife Area

Map Updated: 12/1/2020





Taylor River SWA - Gunnison County

From Gunnison, go 10 miles north on Highway 135 to Almont, then 18 miles northeast (right) on forest Road 742 (Taylor River Road) to the property. You can't miss it; the boundary lines are well marked.

Wildlife Area Offers:

Fishing: Coldwater stream

Recreation: Wildlife viewing

Regulations:

In addition to those restrictions listed in regulation #900 the below listed provisions or restrictions apply (see Chapter 9, <http://cpw.state.co.us/aboutus/Pages/Regulations.aspx>).

- A. Public access is prohibited from Taylor Dam to 325 yards downstream.
- B. Parking is allowed in designated parking areas only.
- C. Hunting and the discharge of firearms or bows is prohibited.

More Information:

CPW Office (Gunnison): (970) 641 – 7060

CPW Website: <http://cpw.state.co.us>