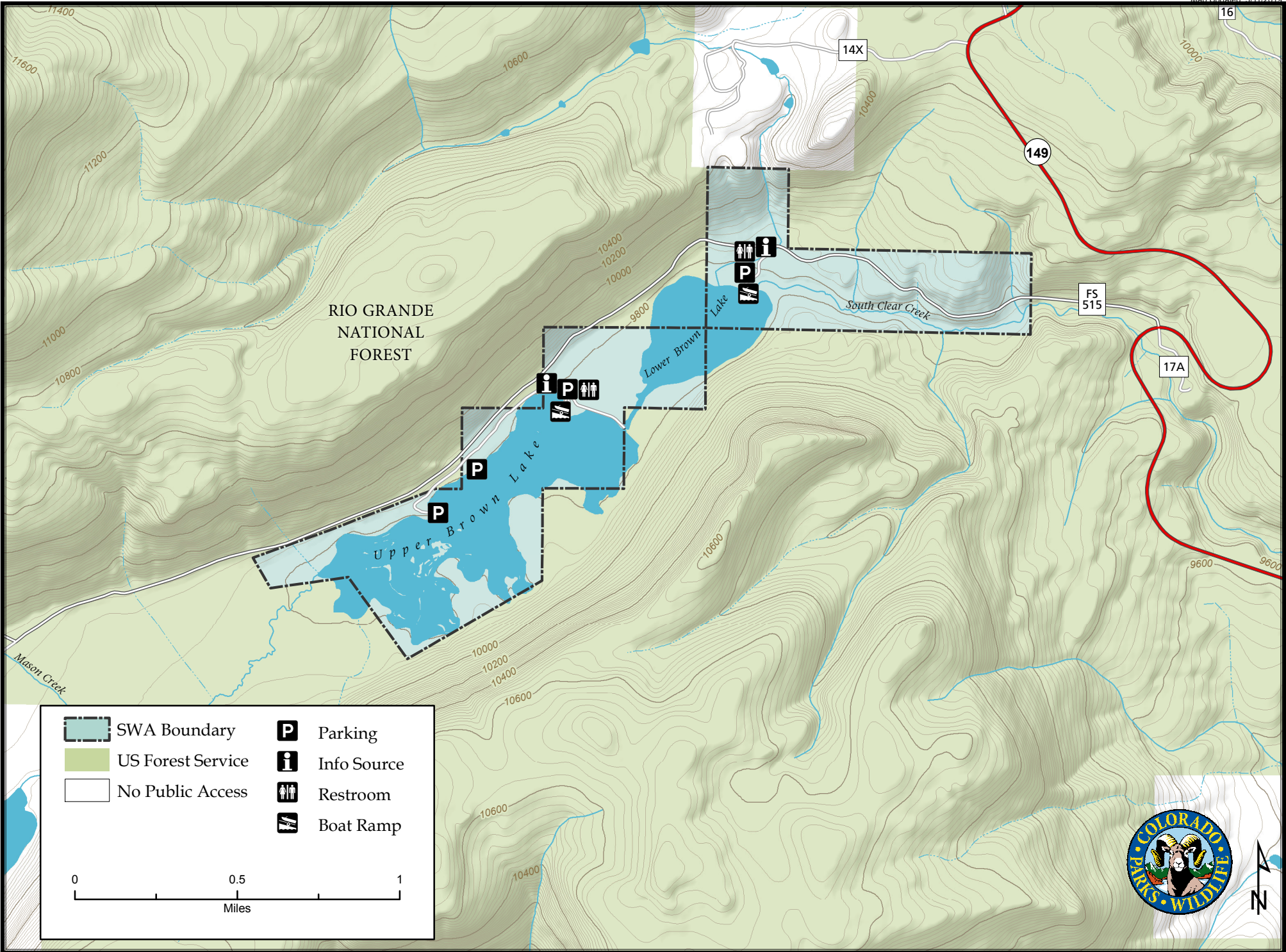
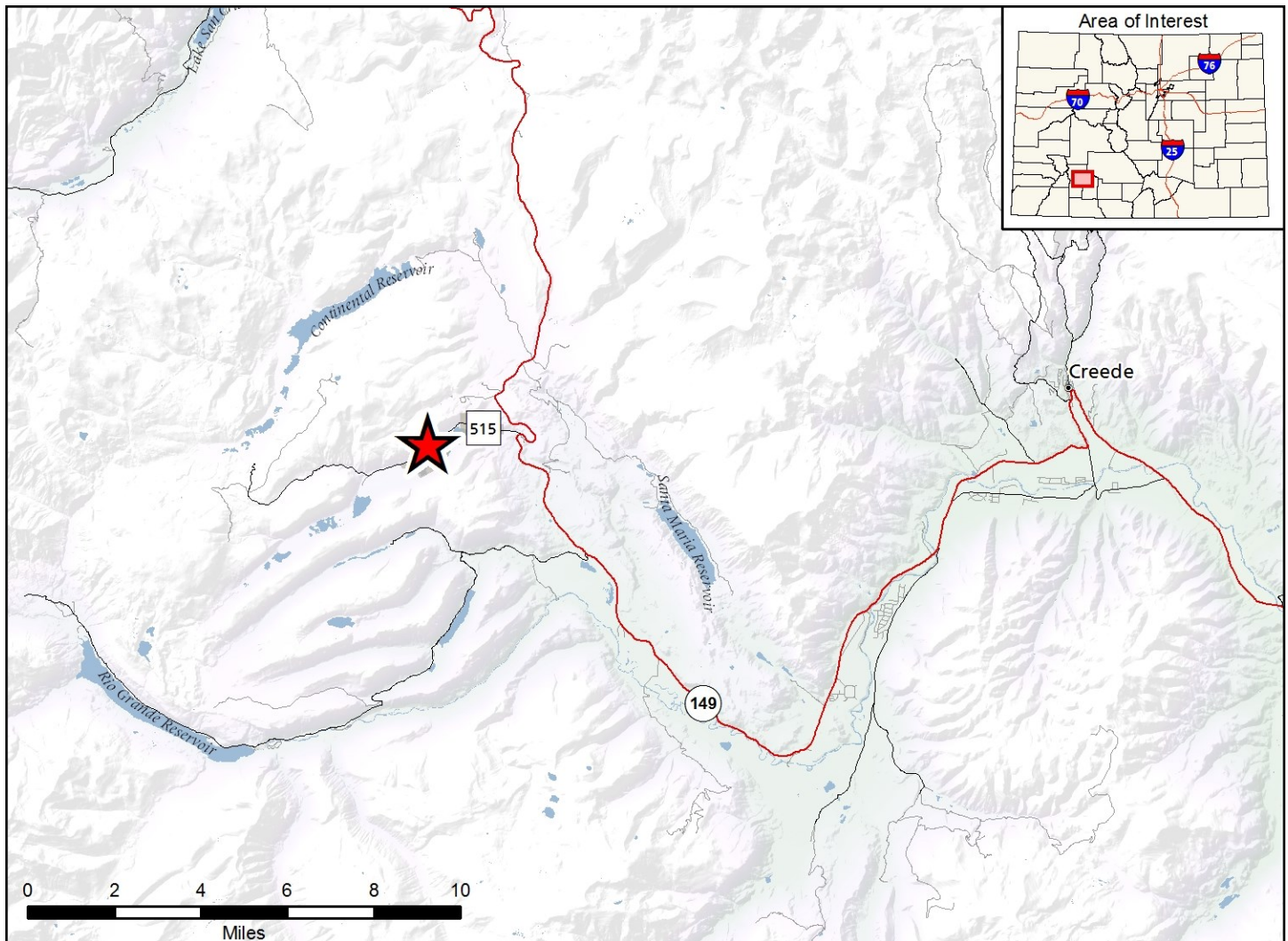


Brown Lakes State Wildlife Area

Map Updated: 3/11/2019





Brown Lakes SWA - Hinsdale County

From Creede, go 25 miles west on Highway 149 to Forest Service Road 515 (Hermit Lakes Road), then 1 1/2 miles west (left) to the property.

Wildlife Area Offers:

- Hunting: Waterfowl
- Fishing: Coldwater Lake
- Recreation: Wildlife Viewing

Regulations:

In addition to or in place of those restrictions listed in regulation #900 the below listed provisions or restrictions apply (see Ch. 9, <http://cpw.state.co.us/aboutus/Pages/Regulations.aspx>).

This Division property has no specific regulations. **General provisions contained in regulation #900 apply.**

More Information:

CPW Office (Monte Vista): (719) 587-6900
 CPW Website: <http://cpw.state.co.us/>

This product is produced and distributed by: Colorado Parks and Wildlife - GIS Group, 317 W. Prospect, Fort Collins, CO 80526. Information depicted hereon is for reference purposes only and is compiled from best available sources. Mapped property boundaries may or may not reflect actual legal holdings. Please observe and respect all marked boundaries and signs on the property. Regulations are subject to change - posted regulations at the individual SWA take precedence over any regulations referred to here. For further information, please see regulations brochures available at CPW offices or cpw.state.co.us.