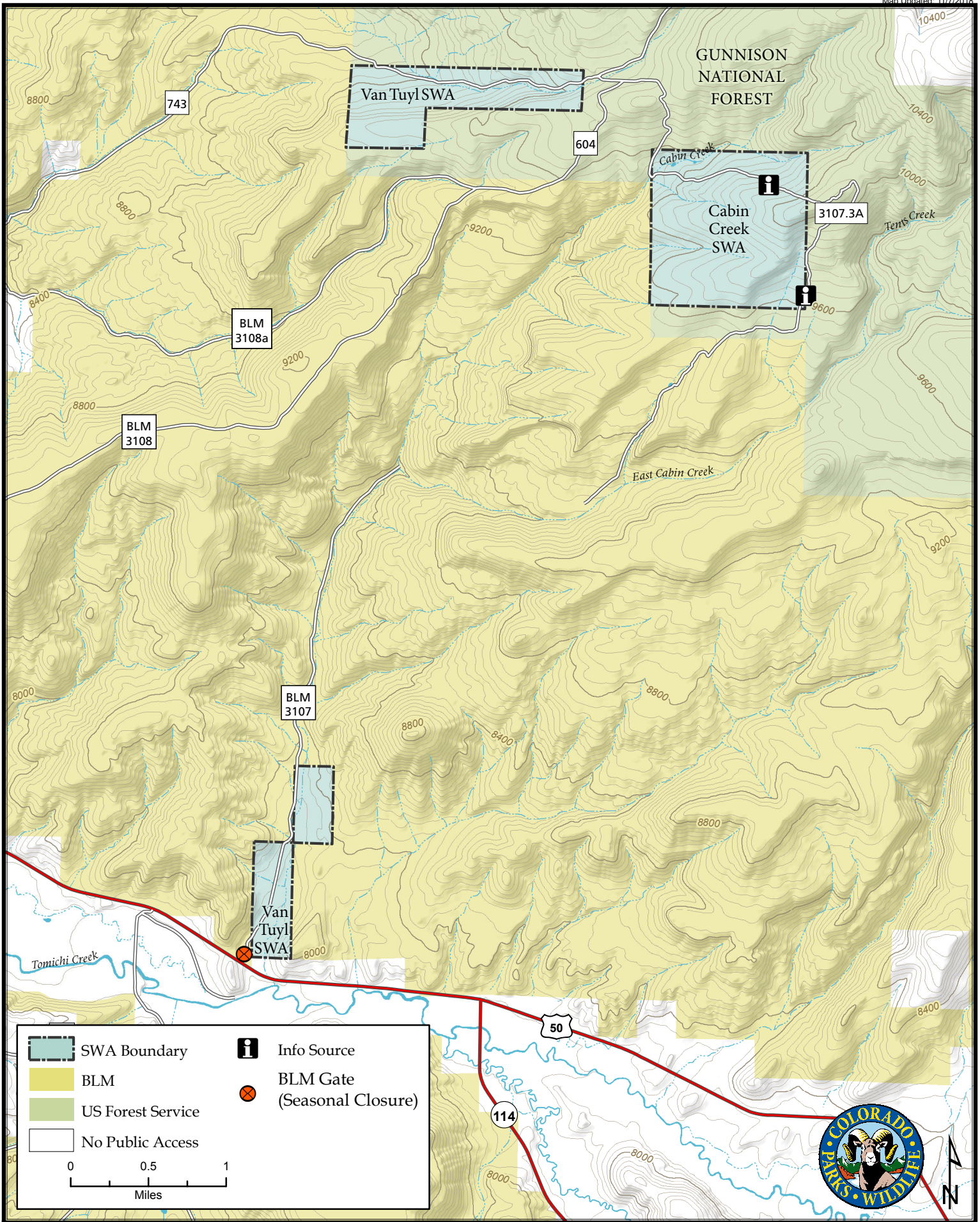
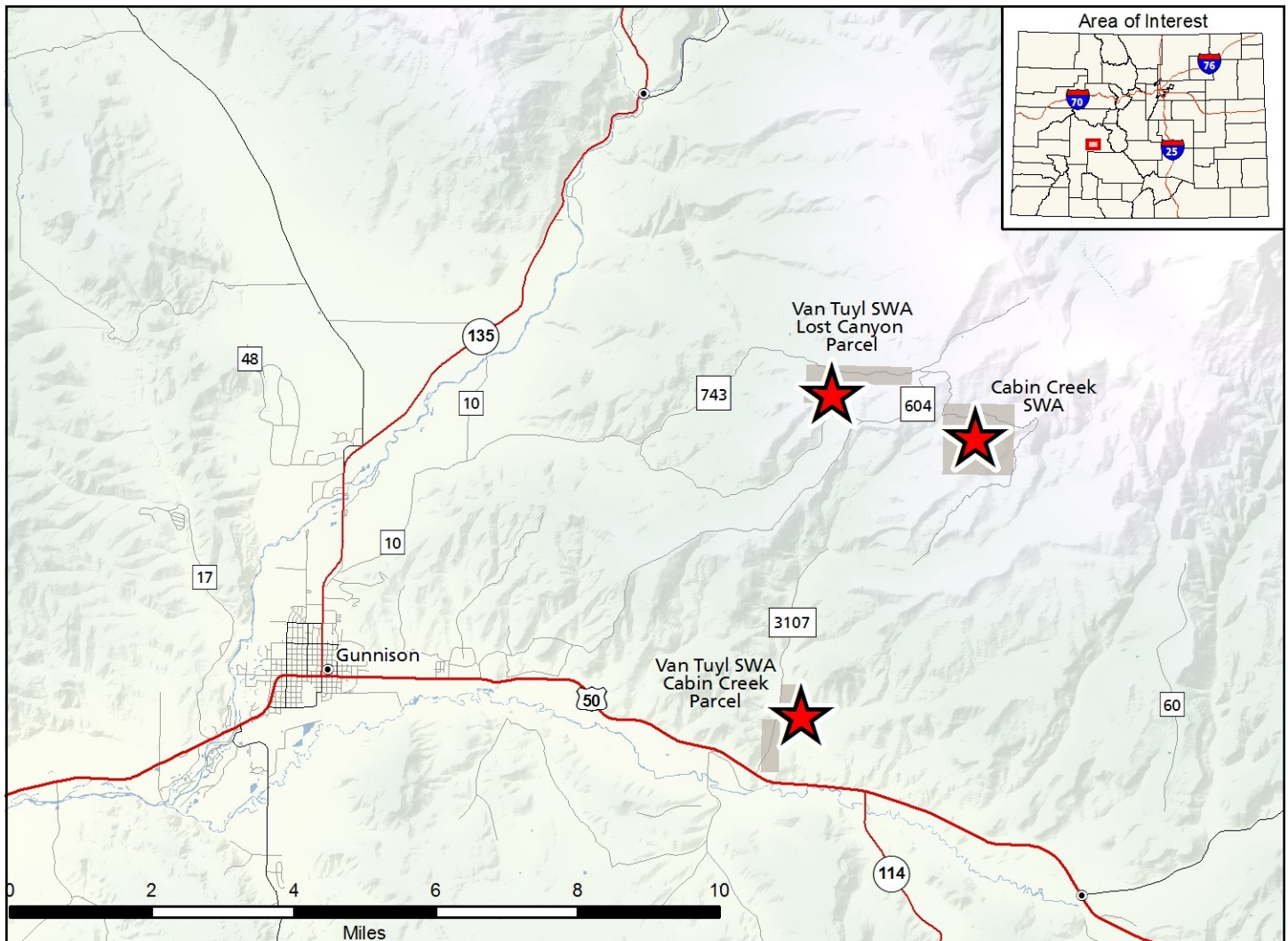


Van Tuyl & Cabin Creek State Wildlife Areas

Map Updated: 11/7/2018





Van Tuyl SWA & Cabin Creek SWA - Gunnison County

Van Tuyl-Cabin Creek Parcel: From Gunnison, go 6.5 miles E on Hwy. 50, then go 0.2 of a mile N on BLM Rd. 3107. **Van Tuyl-Lost Canyon Parcel:** From Gunnison, go 1.2 miles N on Hwy. 135, turn E and take CR 10 for 3 miles. Turn E on CR 743 and go about 6 miles to SWA. **Cabin Creek SWA:** From Gunnison, go 2 miles north on Highway 135 to County Road 10 (Lost Canyon Road), then 8 miles east(right) to Forest Service Road 604, and then south (right) 1.5 miles into the property.

Wildlife Area Offers:

Hunting: Deer, Elk, Small Game, Dusky Grouse
 Fishing: Wildlife Viewing

Regulations:

In addition to those restrictions listed in regulation #900 the below listed provisions or restrictions apply (see Chapter 9, <http://cpw.state.co.us/aboutus/Pages/Regulations.aspx>).

Van Tuyl SWA:

This Division property has no specific regulations. **General provisions contained in regulation #900 apply.**

Cabin Creek SWA:

This Division property has no specific regulations. **General provisions contained in regulation #900 apply.**

More Information:

CPW Office (Gunnison): (970) 641 – 7060
 CPW Website: <http://cpw.state.co.us>