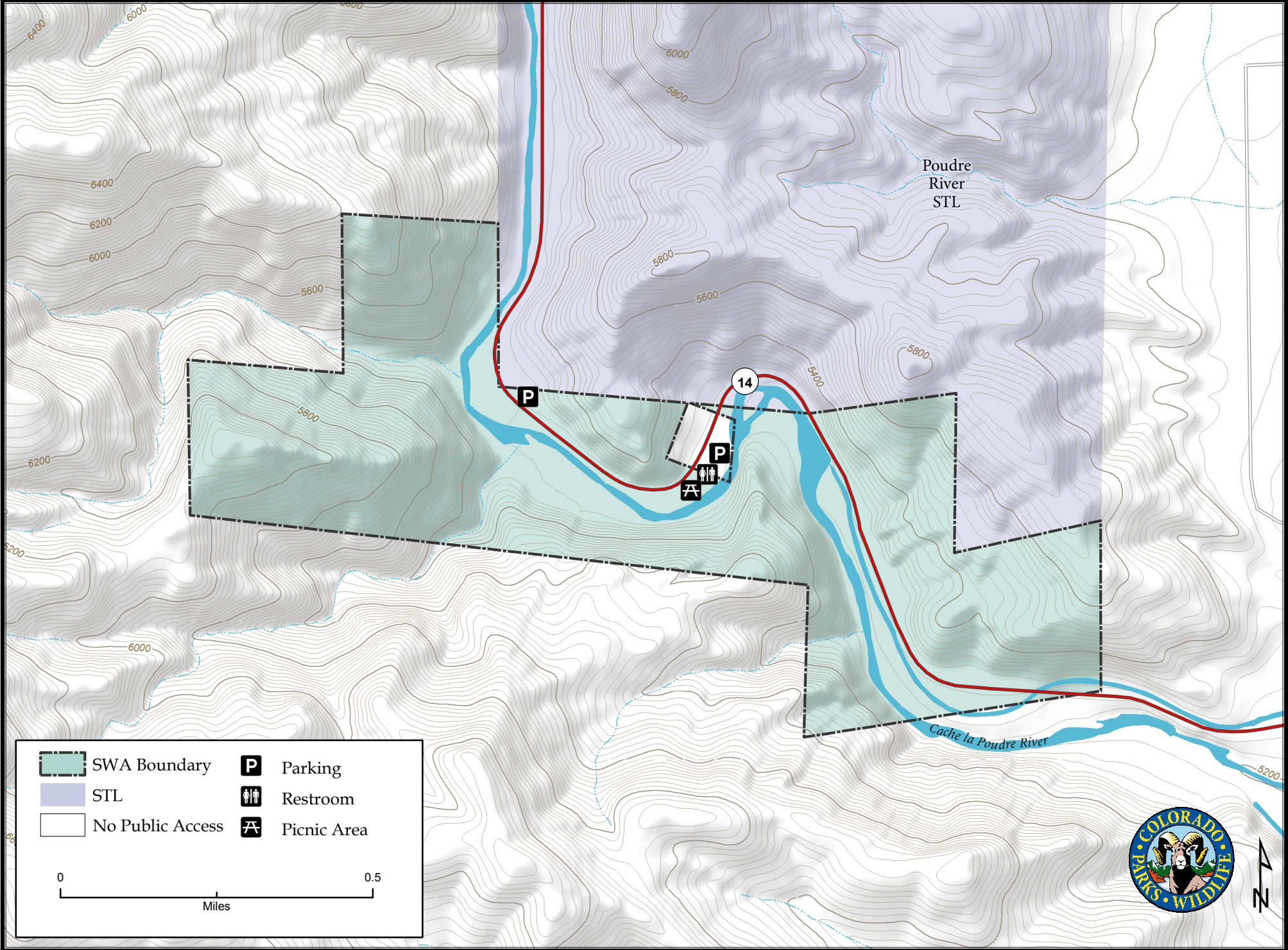






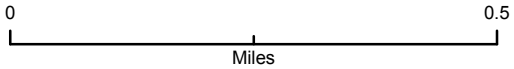


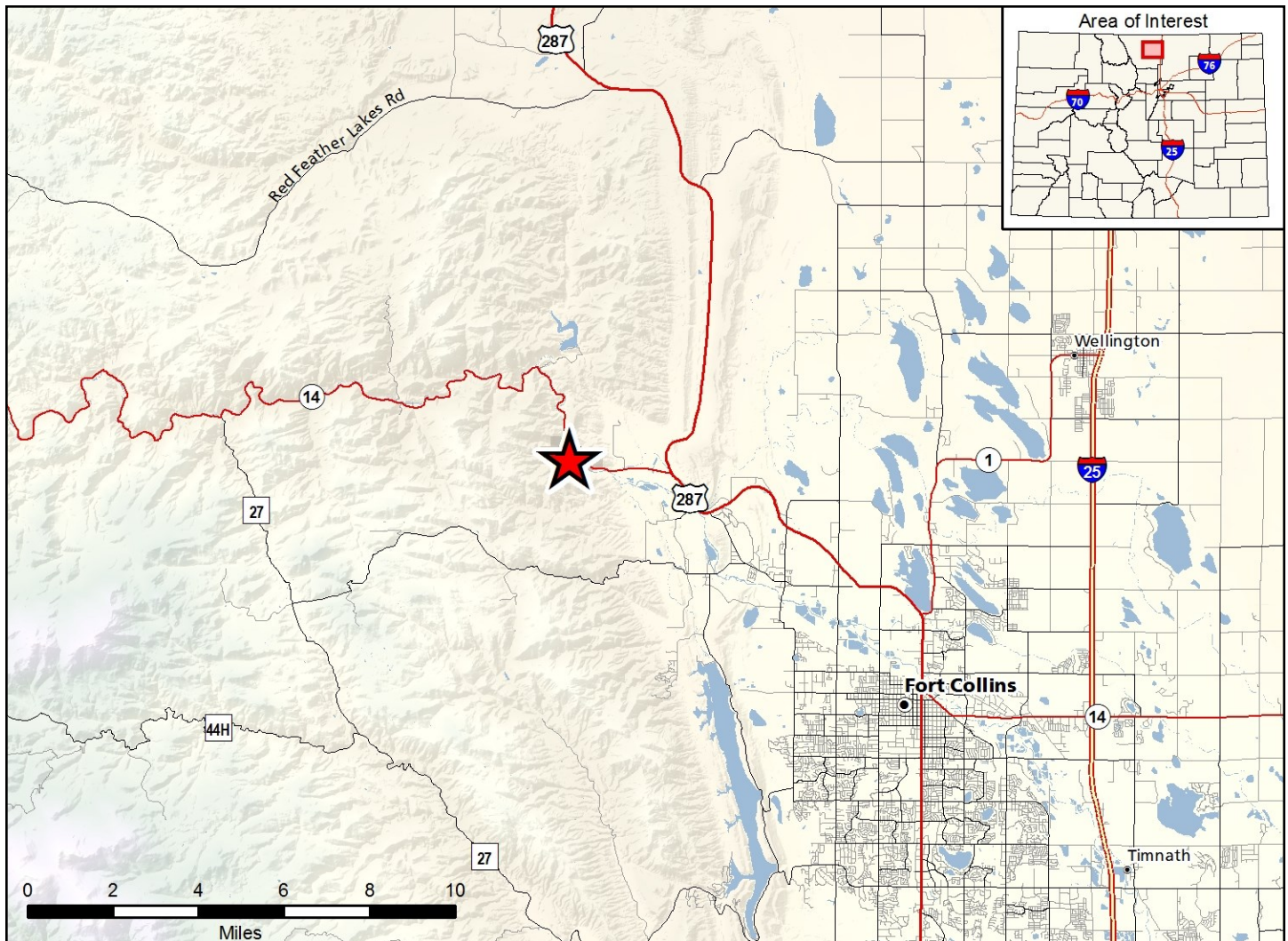
Poudre River State Wildlife Area

Map Updated: 10/1/2019



-  SWA Boundary
-  STL
-  No Public Access
-  Parking
-  Restroom
-  Picnic Area





Poudre River SWA - Larimer County

From LaPorte, go 5 miles North on Hwy. 287 to Hwy. 14, then go 1.5 miles West.

Wildlife Area Offers:

- Fishing: Coldwater Stream
- Hunting: Deer, Rabbit
- Recreation: Wildlife Viewing

Regulations:

In addition to or in place of those restrictions listed in regulation #900 the below listed regulations (see Chapter 9, <https://cpw.state.co.us/aboutus/Pages/Regulations.aspx>).

- A. Discharge of firearms or bows is prohibited, except when hunting or bowfishing.
- B. Public access to Poudre River State Wildlife Area is exempt from requirements set forth in section #900(C)1 of these regulations.

More Information:

CPW Office (Fort Collins): (970) 472 - 4300

Website: <http://cpw.state.co.us/>

This product is produced and distributed by: Colorado Parks and Wildlife - GIS Group, 317 W. Prospect, Fort Collins, CO 80526. Information depicted hereon is for reference purposes only and is compiled from best available sources. Mapped property boundaries may or may not reflect actual legal holdings. Please observe and respect all marked boundaries and signs on the property. Regulations are subject to change - posted regulations at the individual SWA take precedence over any regulations referred to here. For further information, please see regulations brochures available at CPW offices or cpw.state.co.us.