

**FINAL REGULATIONS - CHAPTER W-9 - WILDLIFE PROPERTIES**

**ARTICLE I - General Provisions**

**ARTICLE II - Property-Specific Provisions**

**#901 - Property-Specific Regulations**

**See Appendix B for a list of properties without property-specific regulations, to which only restrictions in #900 apply)**

- A. On all Division properties which have reservations available or required, those reservations may be made by phone or online (cpw.state.co.us). Reservations for small game and waterfowl hunting may not be made more than 14 days in advance of the hunt date, nor after 12:00 noon on the day before the hunt date. Reservations for big game hunting may not be made more than 45 days in advance of the start of the season for which the reservation is being made. Unless otherwise specified, reservations for big game hunting are valid throughout the season designated by the license. Hunters who wish to cancel a reservation must do so no later than 12:00 noon on the day before the hunt date. Failure to hunt a reserved area without prior cancellation, or follow check station procedures, may cause forfeiture of the privilege to make reservations for the remainder of the hunting season. Hunters are limited to a maximum of one reservation per hunt date. Hunters must possess a valid license for the species to be hunted in order to make a reservation. Reservations are not transferable. The individual named on the reservation must be at the property on the day of the hunt. Hunters with reservations may only hunt the hunt area specified on the reservation. Any exceptions to the above restrictions will be listed under property specific regulations.
- B. In addition to or in place of those restrictions listed in regulation #900, the following provisions or restrictions apply:
  - 1. **Adams State Wildlife Area - Routt County**
    - a. Public access is prohibited from December 1 through July 15.
    - b. Discharge of firearms or bows is prohibited, except while hunting.
  - 2. **Adobe Creek Reservoir State Wildlife Area - Bent and Kiowa Counties**
    - a. Public access is prohibited from one (1) hour after sunset to one (1) hour before sunrise, except while camping, while hunting, or while fishing.
    - b. Public access to the frozen surface of the lake is prohibited.
    - c. Public access to the dams, inlets, and outlet structures is prohibited, except while fishing.
    - d. Launching and use of all vessels is allowed.
    - e. Water contact activities are allowed.
    - f. Camping is allowed in designated and established camping areas only.
    - g. Fires are allowed within an established containment structure in designated areas.
  - 3. **Alberta Park Reservoir State Wildlife Area - Mineral County**

- a. Launching and use of all vessels is allowed.
  - b. Operating a vessel in a manner that creates a whitewater wake is prohibited.
- 4. Almont Triangle State Wildlife Area - Gunnison County**
- a. Public access is prohibited from December 1 through April 30.
- 5. Andrews Lake State Wildlife Areas - San Juan**
- a. Vessel use is prohibited, except for hand-launched vessels that are propelled by hand.
- 6. Andrick Ponds State Wildlife Area - Morgan County**
- a. Public access is prohibited from 9:00 p.m. – 4:00 a.m.
  - b. Public access is limited to Saturdays, Sundays, Wednesdays, and state and federal holidays.
  - c. From June 1 through August 31 wildlife viewing is allowed from designated area only.
  - d. From September 1 through the dark goose season, only migratory bird hunting within designated areas is permitted. Reservations are required and valid until sunrise, and are limited to three (3) per hunter annually. Reservations must be made in accordance with #901.A of these regulations.
  - e. Hunters must check-in and out at check stations. Hunters may not check-in until 4:00 a.m. and can only hunt the area reserved. Hunters may check-in on a first-come, first-serve basis after a hunter checks out or after sunrise if a hunter has not checked-in. Maximum of four (4) hunters allowed per hunting area.
  - f. From the end of the dark goose season through the spring turkey season, only turkey hunting is permitted. During spring turkey season, reservations are required and valid until sunrise. Hunters must check-in and out at the check station on CR AA, but may hunt the entire property.
  - g. During waterfowl and turkey seasons, scouting is prohibited, except on Thursdays from 10:00 a.m. – 2:00 p.m. All persons must check-in and out at check stations. All firearms and dogs are prohibited while scouting.
  - h. Hunting with centerfire rifles is prohibited.
  - i. Hunting on Clark Lake is prohibited.
  - j. Discharge of firearms or bows is prohibited, except while hunting.
  - k. Fishing is prohibited.
  - l. Dogs are allowed but must be kept under control on a physical leash by the handler at all times.
  - m. Dog training is prohibited.
- 7. Apishapa State Wildlife - Las Animas County**

- a. Public access is prohibited from June 1 through August 15.
- b. Camping is allowed in designated parking areas by licensed hunters during an established big game, spring turkey, and fall turkey season plus three (3) days before and three (3) days after each season.

**8. Arkansas River/Big Bend State Wildlife Area (Fishing Easement) - Chaffee County**

- a. Public access is prohibited, except while fishing.
- b. Parking and access is allowed from designated parking areas only.
- c. Dogs are prohibited.

**9. Atwood State Wildlife Area - Logan County**

- a. Public access is prohibited from 9:00 p.m. – 4:00 a.m.
- b. All recreational activities, except deer hunting, are prohibited on opening weekend of the regular plains rifle deer season and on the opening day and first weekend of the late plains rifle deer season.
- c. The launching or takeout of vessels is prohibited during waterfowl seasons.
- d. Dog training is prohibited.
- e. Horse use is prohibited.

**10. Axial Basin State Wildlife Area**

- a. Vehicle access is restricted to Moffat Co Rds 32, 55, and 132.
- b. The placing of any portable blind, marker, stand or related structure is prohibited prior to August 1 annually and must be removed within 24 hours after harvesting an animal or within seven (7) days after the end of the archery pronghorn season, whichever comes first.

**11. Badger Basin State Wildlife Area (Fishing Easement) - Park County**

- a. Public access is prohibited, except while fishing.
- b. Public access is allowed within the fenced and posted easement only.
- c. Parking and access is allowed from designated parking areas only.
- d. Hunting is prohibited.

**12. Banner Lakes State Wildlife Area - Weld County**

- a. Public access is prohibited north of Colo 52 from April 1 through July 15
- b. Public access is restricted to foot traffic only.
- c. Parking and access is allowed from designated parking areas only.

- d. Public access is prohibited from the first day of the regular waterfowl season to the day before the first day of pheasant season, except for waterfowl hunting on Saturdays, Sundays, Mondays and state and federal holidays. During this period reservations are available for waterfowl, but not required. Reservations are valid throughout the reserved day until the hunter with the reservation checks out. Hunters may check-in on a first come, first served basis after a hunter with a reservation checks out, or if no reservation exists for a hunt area after 12:00 midnight immediately preceding the hunt, or if a reserved area is not claimed by legal sunrise. Reservations may be made in accordance with #901.A of these regulations. No more than four hunters are allowed per reservation. Hunters with reservations may only hunt the hunt area specified on the reservation.
- e. Waterfowl hunters must check-in and check out at the designated check station.
- f. Discharge of firearms or bows is prohibited, except while hunting, training hunting dogs, or bowfishing.
- g. Fishing is prohibited from October 1 through the end of February.
- h. Vessel use is prohibited, except for hand-launched vessels that are propelled by hand when used as an aid for fishing or hunting or dog training.
- i. Horse use is prohibited.
- j. Bicycles are prohibited.
- k. Dog training is allowed north of Colo 52 during February, March and July 16 to August 31 only. Dog training is allowed south of Colo 52 from February 1 through August 31 only.
- l. Field trials may be authorized during February, March, and August only. No more than four (4) field trials will be allowed per year, except that the number of group training events will not be limited.
- m. Domestic birds, feral birds, or privately owned game birds may be released for field trials and for dog training south of Colo 52 by permit only, in accordance with the provisions of this chapter and other applicable regulations, including, but not limited to, #007, #008, #009, #801 and #804 of these regulations. All such birds taken during training activities shall be removed from the State Wildlife Area by the dog training permittee and all privately owned game birds shall be prepared for human consumption.
- n. The Division is authorized to implement a dog training reservation system should overcrowding become an issue on the State Wildlife Area.

**13. Basalt State Wildlife Area - Eagle and Pitkin Counties**

- a. From March 15 through October 14, firearms may only be discharged on the shooting range on Monday, Tuesday, Thursday, and Friday from 7:00 a.m. until 7:00 p.m., and on Saturday and Sunday from 9:00 a.m. until 5:00 p.m. From October 15 through March 14, firearms may only be discharged on the shooting range on Monday, Tuesday, Thursday, and Friday from 9:00 a.m. until 4:00 p.m., and on Saturday and Sunday from 9:00 a.m. until 4:00 p.m.

- b. With the exception of Christine Lake and the Basalt Shooting Range, public access is prohibited from December 1 through July 15, except while spring turkey hunting.
- c. Discharge of firearms or bows is prohibited, except while hunting or on the designated shooting range.
- d. Vessel use is prohibited.
- e. Camping is allowed by licensed hunters during an established big game or turkey season plus three (3) days before and three (3) days after each season.
- f. Camping is prohibited within one-quarter (1/4) mile of the Frying Pan River.
- g. Dogs are prohibited.

**14. Bayfield Lions Club Shooting Range - La Plata County**

- a. Public access is allowed April 1 through November 30.
- b. Public access is allowed from 9:00 a.m. to 8:00 p.m. from April 1 through October 31.
- c. Public access is allowed from 10:00 a.m. to 5:00 p.m. from November 1 through November 30.
- d. Pistol or rifle shooting is prohibited on the shotgun trap range.
- e. Shotguns, shooting slugs only, are allowed on the pistol-rifle range.
- f. Except for muzzleloaders, rifles are restricted to those smaller than .50 caliber.
- g. Except for clay targets, glass or other breakable targets are prohibited.
- h. Public access to Bayfield Lions Club Shooting Range is exempt from requirements set forth in section #900(C)1 of these regulations.

**15. Beaver Creek Reservoir State Wildlife Area - Rio Grande County**

- a. Discharge of firearms or bows is prohibited.
- b. Launching and use of all vessels is allowed.
- c. Operating a vessel in a manner that creates a whitewater wake is prohibited.

**16. Beaver Creek State Wildlife Area - Fremont County**

- a. Public access is prohibited from August 15 through April 30, except while hunting or fishing or while wildlife viewing from established parking areas.
- b. Dogs are prohibited.

**17. Beaver Lake State Wildlife Area (Marble) - Gunnison County**

- a. Vessel use is prohibited, except for hand-launched vessels that are propelled by hand when used as an aid for fishing.

- b. Motor vehicles are prohibited on the dam.
- c. Discharge of firearms or bows is prohibited.

**18. Bellaire Lake State Wildlife Area - Larimer County**

- a. Vessel use is prohibited, except for hand-launched vessels that are propelled by hand, wind or electric motor.
- b. Public access to Bellaire Lake State Wildlife Area is exempt from requirements set forth in section #900(C)1 of these regulations.

**19. Bergen Peak State Wildlife Area - Clear Creek and Jefferson Counties**

- a. Discharge of firearms of bows is prohibited, except while hunting.
- b. Dogs are allowed but must be kept under control on a physical leash by the handler at all times, except as authorized in #900(C)(15).

**20. Big Meadows State Wildlife Area - Mineral County**

- a. Launching and use of all vessels is allowed.
- b. Operating a vessel in a manner that creates a whitewater wake is prohibited.

**21. Big Thompson Ponds State Wildlife Area - Larimer County**

- a. Public access is prohibited from one (1) hour after sunset to one (1) hour before sunrise daily, except while fishing or when authorized by a night hunting permit.
- b. Vessel use is prohibited, except for hand-launched vessels that are propelled by hand when used as an aid for fishing or hunting.
- c. Discharge of firearms or bows is prohibited, except while hunting or bowfishing.
- d. Horse use is prohibited.
- e. Bicycles are prohibited.
- f. Dog training and field trials are prohibited.

**22. Bighorn Springs State Wildlife Area (Fishing Easement) - Chaffee County**

- a. Public access is prohibited, except while fishing.
- b. Public access is prohibited from one-half (1/2) hour after sunset to sunrise.
- c. Parking and access is allowed from designated parking areas only.
- d. Dogs are prohibited.

**23. Bill Patterson State Wildlife Area – Garfield County**

- a. Waterfowl hunting is allowed from designated blinds only.

- b. Hunting is allowed with shotguns only.
- c. Discharge of firearms or bows is prohibited, except while hunting.
- d. Dogs are allowed but must be kept under control on a physical leash by the handler at all times except as authorized in #900(C)(15).

**24. Billy Creek State Wildlife Area - Ouray and Montrose Counties**

- a. Camping is allowed by licensed hunters during an established big game season plus (3) days before and (3) days after each season.
- b. Public access is prohibited from January 1 through April 30, except for hunting, fishing, and trapping along the Uncompahgre River corridor from US Hwy 550 to 100 feet from the east bank of the river.
- c. Launching and take out of non-motorized vessels is allowed.

**25. Bitterbrush State Wildlife Area - Moffat County**

- a. Public access is prohibited from January 15 through April 30.
- b. Motor vehicle access is restricted to Moffat Co Rds 59 and 143.
- c. The placing of any portable blind, marker, stand or related structure is prohibited prior to August 1 annually and must be removed within 24 hours after harvesting an animal or within seven (7) days after the end of the archery pronghorn season, whichever comes first.

**26. Blacktail Conservation Easement - Routt County**

- a. Public access is prohibited from December 1 through July 15.
- b. Discharge of firearms or bows is prohibited, except while hunting.

**27. Bliss State Wildlife Area - Larimer County**

- a. Vessel use is prohibited.

**28. Blue River State Wildlife Area - Summit County**

- a. Overnight parking is prohibited.
- b. Discharge of firearms or bows is prohibited.

**29. Bob Terrell State Wildlife Area - Garfield County**

- a. Launching and use of vessels is allowed, except that launching and take out of personal watercraft (PWC) is prohibited.
- b. Discharge of firearms or bows is prohibited.

**30. Bodo State Wildlife Area - La Plata County**

- a. Public access is prohibited from December 1 through April 30, except that:
  - 1. Small game hunting is allowed south of CR 210.
  - 2. Public access to the Smelter Mountain Trail is allowed by foot only from 10:00 a.m. - 2:00 p.m.
- b. Discharge of firearms or bows is prohibited, except while hunting.
- c. Launching of paragliders is allowed from the Smelter Mountain Trail, subject to the restrictions listed in a.2 above.
- d. Dogs are allowed from May 1 through September 30 but must be kept under control on a physical leash by the handler at all times, except as authorized in #900(C)(15).
- e. Dogs are allowed pursuant to #900(C)(15) from October 1 through November 30.

**31. Boedecker Reservoir State Wildlife Area - Larimer County**

- a. Public access is prohibited from one (1) hour after sunset to one (1) hour before sunrise except while fishing.
- b. Fishing is prohibited from vessels from November 1 through the last day of the migratory waterfowl season.
- c. Launching and use of all vessels is allowed.
- d. Operating a vessel in a manner that creates a whitewater wake is prohibited.
- e. Sail surfboards are prohibited.
- f. Discharge of firearms or bows is prohibited, except while hunting or bowfishing.
- g. Horse use is prohibited.

**32. Bosque del Oso State Wildlife Area - Las Animas County**

- a. Public access is prohibited from December 1 through April 30, except for properly licensed big game and spring turkey hunters and one non-hunting companion.
- b. Fishing is prohibited on the South Fork of the Purgatoire River within the boundaries of the Bosque del Oso State Wildlife Area from the first day after the Labor Day holiday weekend to the first day of the Memorial Day holiday.
- c. Parking and access is allowed from designated parking areas only.
- d. Discharge of firearms or bows is prohibited, except while hunting or bowfishing.
- e. Camping is allowed by licensed hunters during an established big game, spring turkey, and fall turkey season plus three (3) days before and three (3) days after each season.
- f. Fires are allowed within a containment structure in designated camping areas.

- g. Leaving any unattended food or trash is prohibited unless it is being stored in a bear resistant manner or container.

**33. Bravo State Wildlife Area - Logan County**

- a. Public access is prohibited from 9:00 p.m. – 4:00 a.m.
- b. All recreational activities, except deer hunting, are prohibited on the opening weekend of the regular plains rifle deer season and on the opening day and first weekend of the late plains rifle deer season.
- c. The launching or takeout of vessels is prohibited during waterfowl seasons.
- d. Field trials are prohibited.

**34. Brower State Wildlife Area - Weld County**

- a. Public access is prohibited from the day after the spring turkey season through August 31. Additionally, public access is prohibited from the day after the close of the regular goose season through the day before the opening of the spring turkey season.
- b. Public access is prohibited, except while hunting.
- c. Public access is prohibited one (1) hour after sunset to 4:00 a.m.
- d. Parking is allowed in the designated parking area only.
- e. Fishing is prohibited.
- f. Discharge of firearms or bows is prohibited, except shotguns or bows may only be used while hunting.
- g. Horse use is prohibited.

**35. Brownlee State Wildlife Area (Fishing Lease) - Jackson County**

- a. Public access is prohibited, except while fishing.
- b. Discharge of firearms or bows is prohibited.

**36. Brownlee II State Wildlife Area (Fishing Lease) - Jackson County**

- a. Public access is prohibited, except while fishing.
- b. Discharge of firearms or bows is prohibited.

**37. Browns Park State Wildlife Area - Moffat County**

- a. Public use is prohibited within the posted administrative area of the Calloway Unit.
- b. Public access on the Wiggins Unit is allowed by foot or horseback only except along the main road that runs east and west on the south end of the property.

- c. Camping is allowed in the Cold Springs Mountain Unit and west of Beaver Creek in the Beaver Creek Unit except as posted.
- d. Fires are allowed within a containment structure.

**38. Brush State Wildlife Area - Morgan County**

- a. Public access is prohibited from 9:00 p.m. – 4:00 a.m.
- b. All recreational activities, except deer hunting, are prohibited on the opening weekend of regular plains rifle deer season and on the opening day and first weekend of the late plains rifle deer season.
- c. The launching or takeout of vessels is prohibited during waterfowl seasons.

**39. Brush Hollow State Wildlife Area - Fremont County**

- a. Operating a vessel in a manner that creates a whitewater wake is prohibited.
- b. Hunting and the discharge of firearms or bows is prohibited.

**40. Brush Prairie Ponds State Wildlife Area - Morgan County**

- a. Public access is prohibited from 9:00 p.m. – 4:00 a.m.
- b. From September 1 through the dark goose season, only hunting allowed. Hunters must check-in and out at the check station.
- c. From September 1 through November 30, only migratory bird hunting within designated areas is allowed, and only on Saturdays, Sundays, Wednesdays, and state and federal holidays. Reservations are required and valid until sunrise, and are limited to three (3) per hunter annually. Reservations must be made in accordance with #901.A of these regulations.
- d. Hunters may not check-in until 4:00 a.m. and can only hunt the area reserved or which they check into. Hunters may check-in on a first-come, first-serve basis after a hunter checks out or after sunrise if a hunter has not checked-in. Maximum of four (4) hunters and two (2) vehicles allowed per hunting area.
- e. From September 1 through November 30, scouting is prohibited, except on Thursdays from 10:00 a.m. – 2:00 p.m. All persons must check-in and out at the check station. All firearms and dogs are prohibited while scouting.
- f. From December 1 through the dark goose season, hunters may check-in on a first-come, first-serve basis after 4:00 a.m. or after a hunter checks out. Five (5) hunting areas are open for check-in. Hunters properly checked in may hunt anywhere on the property.
- g. Up to two (2) hunting areas are reserved each year for residents with a physical address of Brush, CO. Applications to enter the drawing are available at the CPW Brush Service Center in mid-August. Hunters must possess a valid license to hunt waterfowl to enter the drawing. Hunters may apply for one hunt area per day, but can list multiple requests on one application. Hunters successful in the drawing are required to comply with all hunting restrictions listed in regulation #901.A of these regulations.

- h. Discharge of a firearm or bow is prohibited, except while hunting.

**41. Buena Vista State Wildlife Area - Chaffee County**

- a. Public access to Buena Vista State Wildlife Area is exempt from requirements set forth in section #900(C)1. of these regulations.

**42. Burry State Wildlife Area (Fishing Lease) - Garfield County**

- a. Public access is prohibited, except while fishing.
- b. Public access is limited to designated points as posted.
- c. Dogs are prohibited.

**43. Centennial State Wildlife Area - Gunnison County**

- a. Public access is prohibited from December 1 through June 30.
- b. Dog training and field trials are prohibited.

**44. Centennial Valley State Wildlife Area – Weld County**

- a. Public access is prohibited from one (1) hour after sunset – 4:00 a.m.
- b. Public access is prohibited from the day after the last day of the spring turkey season through August 31.
- c. During the spring turkey season, public access is prohibited except for licensed turkey hunters that have a turkey hunting reservation. A total of ten (10) reservation slots per day will be available for spring turkey hunters during the spring turkey season. Turkey hunters with a reservation may hunt the entire property. There is no annual limit on the number of turkey reservations. Reservations must be made in accordance with #901.A of these regulations. A maximum of four (4) hunters are allowed per turkey hunting reservation slot.
- d. During the regular duck seasons, public access is limited to Saturdays, Sundays, Wednesdays, and state and federal holidays. Reservations are required to hunt waterfowl and small game, and are limited to three (3) per hunter annually. Waterfowl and small game hunters may only hunt the areas specified on their reservation. Reservations must be made in accordance with #901.A of these regulations.
- e. All reservation hunters must check out at one of the check stations located in each parking lot of the property.
- f. Small game and waterfowl hunting is prohibited on the opening weekend of the regular plains rifle deer season and the opening day and first weekend of the late plains rifle deer season.
- g. Discharge of firearms or bows is prohibited, except while hunting.
- h. Hunting with centerfire rifles is prohibited.

- i. Horse use is prohibited.

**45. Cerro Summit State Wildlife Area - Montrose County**

- a. Public access is prohibited, except while fishing and hunting only.
- b. Public access is allowed by foot only.
- c. Parking and public access to the property is allowed from designated parking areas only.
- d. Hunting is prohibited from December 1 to August 14.
- e. Fishing is prohibited from December 1 to February 28.
- f. Dogs are allowed as an aid in small game hunting only. Dogs are prohibited from entering the water.
- g. Vessel use and water contact activity is prohibited, except for launching and use of float tubes (with waders) for fishing only.

**46. Chaffee County Shooting Range State Wildlife Area - Chaffee County**

- a. Public access is prohibited from sunset to sunrise.

**47. Champion State Wildlife Area (Fishing Easement) - Chaffee County**

- a. Public access is prohibited, except while fishing.
- b. Parking and access is allowed from designated parking areas only.

**48. Chance Gulch State Wildlife Area – Gunnison County**

- a. Public access is prohibited from March 1 through June 30, except for through traffic on Gunnison Co Rd 42a and established roads connecting to designated BLM roads.

**49. Cherokee State Wildlife Area (Upper Unit, Middle Unit, Lower Unit, Lone Pine Unit, Roy Brown Unit) - Larimer County**

- a. Public access is prohibited from September 1 to May 1, except while hunting and fishing.
- b. Hunting and fishing access after the close of the last big game season is by foot only.
- c. Horse use is restricted to designated roads and trails, except for horses used as an aid in hunting big game.
- d. Horse use is prohibited while hunting mountain lion.
- e. Horse use is allowed on the Rattlesnake Loop on the Lone Pine Unit from May 2 through August 31.
- f. Camping is allowed.
- g. Dogs are allowed but must be kept under control on a physical leash by the handler at all times, except as authorized in #900(C)(15).

**50. Chesmore State Wildlife Area - Chaffee County**

- a. Public access to Chesmore State Wildlife Area is exempt from requirements set forth in section #900(C)1 of these regulations.

**51. Christina State Wildlife Area (Elk River Fishing Easement) - Routt County**

- a. Public access is prohibited, except while fishing.
- b. Discharge of firearms or bows is prohibited.

**52. Chubb Park Ranch State Wildlife Area - Chaffee County**

- a. Discharge of firearms or bows is prohibited, except while hunting.

**53. Chuck Lewis State Wildlife Area - Routt County**

- a. Public access is prohibited from sunset to sunrise except while hunting or fishing.
- b. Overnight parking is prohibited.
- c. Big game and small game hunting are prohibited.
- d. Waterfowl hunting is allowed, except for within 50 yards of the bridge on Routt Co Rd 14F.
- e. Horses are allowed in the parking area.
- f. Discharge of firearms or bows is prohibited, except while hunting.

**54. Cimarron State Wildlife Area - Montrose and Gunnison Counties**

- a. Snowmobile use is prohibited.
- b. Overnight parking is prohibited.
- c. Public access is prohibited from January 1 through June 30.

**55. Clear Creek Reservoir State Wildlife Area - Chaffee County**

- a. Camping is allowed in designated areas only.
- b. Fires are allowed within a containment structure in designated camping areas.
- c. Fishing is prohibited from the dam, spillway, outlet structures and downstream to US 24.

**56. Cline Ranch State Wildlife Area - Park County**

- a. Public access is allowed in designated parking area only.
- b. Overnight parking is prohibited
- c. Fishing access is restricted to designated fishing areas (beats) only. Access to each fishing beat is restricted to occupants of the vehicle parked in the parking stall assigned

to that beat (determined by corresponding number). No more than four anglers are allowed per vehicle, and only one vehicle is allowed per stall.

- d. Fishing is prohibited from October 1 through the end of February.
- e. Hunting access is limited to occupants of vehicles parked in designated parking stalls with a maximum of four hunters per vehicle.
- f. Discharge of firearms or bows is prohibited, except while hunting.
- g. Dog training and field trials are prohibited.

**57. Coal Creek Ranch State Wildlife Area (Access Easement) - Rio Blanco County**

- a. Public access allowed from May 1 through November 30 while fishing only.
- b. Public access is allowed while deer and elk hunting during the archery and muzzleloader season only.
- c. Public access is limited to four hunters per day and hunters must sign in and out of property as posted.
- d. Parking and access is allowed from designated parking areas only.

**58. Coalbed Canyon State Wildlife Area – Dolores County**

- a. Discharge of firearms or bows is prohibited, except while hunting.

**59. Cochetopa State Wildlife Area - Saguache County**

- a. Public access is allowed by foot only from designated parking areas.
- b. Public access is prohibited from one (1) hour after sunset until one (1) hour before sunrise, except when a hunter is retrieving downed game.
- c. Big game hunting is prohibited north of the posted east/west center line of Section 27, Range 2 East, Township 46 North.
- d. Dogs are prohibited.

**60. Collier State Wildlife Area - Rio Grande and Mineral Counties**

- a. Overnight parking is prohibited.
- b. Snowmobile use is prohibited.
- c. Vessel use is prohibited, except for launching and take out of vessels that are propelled by hand.
- d. Dogs are allowed but must be kept under control on a physical leash by the handler at all times, except as authorized in #900(C)(15).

**61. Collins Mountain Ranch State Wildlife Area (Access Easement) – Rio Blanco County**

- a. Public access is prohibited, except while deer or elk hunting.
- b. Hunting allowed by reservation only.
- c. All hunters must comply with the Hunter Reservation System and reservations must be made through the Hunter Reservation System in accordance with #901.A of these regulations.
- d. Motor vehicle use is prohibited, except for on designated roadways or through permission of the ranch owners. All other access is restricted to walk-in access only.
- e. Discharge of firearms or bows prohibited, except while hunting.
- f. Fishing is prohibited.

**62. Colorado River Island State Wildlife Area - Mesa County**

- a. Hunting is prohibited, except for waterfowl hunting from designated blinds.
- b. Waterfowl hunting is allowed by reservation only.
- c. All hunter must comply with the Hunter Reservation System and reservations must be made through the Hunter Reservation System in accordance with #901.A of these regulations.
- d. Discharge of firearms or bows is prohibited, except while hunting.

**63. Colorow Mountain State Wildlife Area - Rio Blanco County**

- a. Public access is prohibited from February 1 through April 30.
- b. Motorized vehicles are prohibited in the Scenery Gulch Unit.
- c. Motorized vehicles are prohibited in the Tschuddi Unit north of the designated camping area.
- d. Parking and access is allowed from designated parking areas only.
- e. Discharge of firearms or bows is prohibited within 200 yards of camping or parking areas or any structure.
- f. Discharge of firearms or bows is prohibited, except while hunting.
- g. Camping is allowed in designated areas only.
- h. Fires are allowed within a containment structure.

**64. Columbine State Wildlife Area - Douglas County**

- a. Discharge of firearms is prohibited.
- b. Fishing is prohibited.
- c. Hunting is prohibited.

- d. Public access is prohibited in riparian areas for the protection of Preble's meadow jumping mouse, as posted.

**65. Cottonwood State Wildlife Area - Morgan County**

- a. Public access is prohibited from 9:00 p.m. – 4:00 a.m.
- b. All recreational activities, except deer hunting, are prohibited on the opening weekend of the regular plains rifle deer season and on the opening day and first weekend of the late plains rifle deer season.
- c. The launching or takeout of vessels is prohibited during waterfowl seasons.

**66. Cottonwood Creek State Wildlife Area - Chaffee County**

- a. Public access to Cottonwood Creek State Wildlife Area is exempt from requirements set forth in section #900(C)1 of these regulations.

**67. Cowdrey Lake State Wildlife Area - Jackson County**

- a. Operating a vessel in a manner that creates a whitewater wake is prohibited.
- b. Discharge of firearms or bows is prohibited, except while hunting.
- c. Camping is allowed in designated areas only.
- d. Fires are allowed within an established containment structure in designated areas.
- e. Dogs are allowed but must be kept under control on a physical leash by the handler at all times except as authorized in #900(C)(15).

**68. Creede State Wildlife Area – Mineral County**

- a. Hatchery Tract
  - 1. Hunting and the discharge of firearms or bows is prohibited.
  - 2. Dogs are allowed but must be kept under control on a physical leash by the handler at all times.
  - 3. Overnight parking is prohibited.
- b. Mountain Views RV Park Fishing Easement
  - 1. Public access is allowed from designated access points as posted.
  - 2. Public access within the high water mark of the Rio Grande River is prohibited, except while fishing.
- c. Deep Creek Bridge Tract
  - 1. Hunting and the discharge of firearms or bows is prohibited.
  - 2. Dogs are allowed but must be kept under control on a physical leash by the handler at all times.

3. Overnight parking is prohibited.
- d. Vessel use is prohibited, except for launching and take out of vessels that are propelled by hand.

**69. Crooked Wash Ranch State Wildlife Area (Access Easement) – Moffat County**

- a. Public access is prohibited, except while elk hunting.
- b. Hunting allowed by reservation only.
- c. All hunters must comply with the Hunter Reservation System and reservations must be made through the Hunter Reservation System in accordance with #901.A of these regulations.
- d. Discharge of firearms or bows is prohibited, except while hunting.
- e. Motor vehicle use is prohibited, except for on designated roadways or through permission of the ranch owners. All other access is restricted to walk-in access only.
- f. Fishing is prohibited.

**70. Cross Canyon State Wildlife Area - Dolores County**

- a. Public access during the first two days of the rifle deer and elk seasons is restricted to youth and a non-hunting mentor.
- b. Parking is allowed in designated parking areas only.
- c. Discharge of firearms or bows is prohibited, except while hunting.
- d. Dog training and field trials are prohibited.

**71. Dan Noble State Wildlife Area - San Miguel County**

- a. Miramonte Reservoir Tract
  1. Camping is allowed in designated areas only.
  2. Discharge of firearms or bows is prohibited, except while hunting.
  3. Launching and use of all vessels is allowed. Trailered vessels must be launched from boat ramps.
  4. Waterskiing and personal watercraft (PWC) are allowed in designated areas only on the western half of the reservoir. Waterskiing is allowed from 10:00 a.m. to sunset.
  5. Dogs are allowed but must be kept under control on a physical leash by the handler at all times, except as authorized in #900(C)(15).
- b. Greager Tract
  1. Public access is prohibited from March 1 through May 15, except under permit issued by AWM/DWM for viewing purposes.
  2. Public access is allowed by foot or horseback only.

3. Viewing site is limited to area selected by Division personnel.
  4. Viewing parties will abide by all restrictions and conditions on the permit.
  5. Snowmobile use is prohibited.
- c. John Kane Tract
1. Public access is prohibited from March 1 through May 15.
  2. Public access is allowed by foot or horseback only.
  3. Snowmobile use is prohibited.

**72. Dawn Pond State Wildlife Area - Bent County**

- a. Public access is prohibited, except while fishing; hunting is by landowner permission only.
- b. Parking and access is allowed from designated parking areas only.
- c. Vessel use is prohibited, except for hand-launched vessels that are propelled by hand or electric motors are allowed when used as an aid in fishing or hunting.

**73. Delaney Butte Lakes State Wildlife Area - Jackson County**

- a. Operating a vessel in a manner that creates a whitewater wake is prohibited.
- b. Launching or takeout of any vessel from a trailer or motor vehicle is prohibited except at established boat ramps.
- c. Discharge of firearms or bows is prohibited, except while hunting.
- d. Fires are allowed within an established containment structure in designated areas.
- e. Dogs are allowed but must be kept under control on a physical leash by the handler at all times except as authorized in #900(C)(15).

**74. Devil Creek State Wildlife Area - Archuleta County**

- a. Snowmobile use is prohibited.
- b. Discharge of firearms or bows is prohibited, except while hunting.

**75. Deweese Reservoir State Wildlife Area – Custer County**

- a. Vessel use is prohibited, except while fishing. Any other water recreation use, other than fishing, is restricted to owners with deeded recreation rights on Deweese Reservoir.
- b. OHV use is prohibited. Snowmobile use is allowed only as an aid in ice fishing.
- c. Camping is allowed by reservation only in designated and established camping areas.
- d. Fires are allowed within an established containment structure in designated camping areas.
- e. Glass containers are prohibited.

- f. Dogs are allowed but must be kept under control on a physical leash by the handler at all times, except as authorized in #900(C)(15).

**76. Diamond J State Wildlife Area (Hunting and Fishing Lease) - Jackson County**

- a. Public access is allowed while fishing, small game hunting, and waterfowl hunting only.
- b. Hunting is allowed with shotguns or by falconry only.
- c. Discharge of firearms or bows is prohibited, except while hunting.

**77. Dolores River State Wildlife Area - Montezuma County**

- a. Parking is allowed in designated parking areas only.
- b. Fishing is prohibited in the rearing ponds.

**78. Dome Lakes State Wildlife Area - Saguache County**

- a. Discharge of firearms or bows is prohibited in the designated safety zones or as posted.
- b. Dogs are allowed but must be kept under control on a physical leash by the handler at all times, except when used as an aid in hunting waterfowl.
- c. Camping is allowed in designated areas.
- d. Fires are allowed within a containment structure in designated camping areas.

**79. Dome Rock State Wildlife Area - Teller County**

- a. Public access is prohibited from December 1 through July 15 in the area bounded on the east by the Sand Creek Trail, on the north by the Dome Rock Trail, and on the west and south by the property boundaries. The Dome Rock Trail west of the Jack Rabbit Lodge is closed from December 1 through July 15.
- b. Parking and public access is allowed from designated parking lots and connecting trails from Mueller State Park only.
- c. Horse and pack animal use is allowed on designated roads and trails only, except when used as an aid to big game hunting.
- d. Rock climbing is prohibited.
- e. Dogs are prohibited.

**80. Douglas Reservoir - Larimer County**

- a. Public access is prohibited from one (1) hour after sunset until one (1) hour before sunrise, except while fishing.
- b. Hunting and the discharge of firearms or bows is prohibited.
- c. The use of any vessel or single compartment air or gas filled flotation device and all water contact is prohibited, unless actively fishing.

- d. Operating a vessel in a manner that creates a whitewater wake is prohibited.
- e. Sailboards, sailboats and ice skating is prohibited.
- f. OHV and snowmobile use is prohibited.
- g. Dogs are allowed but must be kept under control on a physical leash by the handler at all times, except as authorized in #900(C)(15).

**81. Dowdy Lake State Wildlife Area - Larimer County**

- a. Launching and use of all vessels is allowed.
- b. Operating a vessel in a manner that creates a whitewater wake is prohibited.
- c. Public access to Dowdy Lake State Wildlife Area is exempt from requirements set forth in section #900(C)1 of these regulations.

**82. Dry Creek Basin State Wildlife Area - San Miguel County**

- a. Snowmobile use is prohibited.
- b. Camping is allowed in designated areas by licensed hunters during an established big game season plus three (3) days before and three (3) days after each season.

**83. Duck Creek State Wildlife Area - Logan County**

- a. Public access is prohibited from 9:00 p.m. – 4:00 a.m.
- b. One field trial per year in February, March, or August may be authorized.

**84. Dune Ridge State Wildlife Area - Logan County**

- a. Public access is prohibited from 9:00 p.m. – 4:00 a.m.
- b. All recreational activities, except deer hunting, are prohibited on the opening weekend of the regular plains rifle deer season and on the opening day and first weekend of the late plains rifle deer season.
- c. The launching or takeout of vessels is prohibited during waterfowl seasons.

**85. Dutch Gulch State Wildlife Area - Gunnison County**

- a. Public access is prohibited from March 1 through June 30, except for through traffic on Gunnison Co. Rd 42 and on established roads connecting to designated BLM roads.

**86. Eagle River State Wildlife Area (Fishing Leases) - Eagle County**

- a. Public access is prohibited, except while fishing.
- b. Public access is limited to designed points as posted.
- c. Dogs are prohibited.

**87. Eagle Rock State Wildlife Area - Yuma County**

- a. Public access prohibited from 9 p.m. - 4 a.m.
- b. Public access is allowed by foot traffic only.
- c. Horse use is prohibited, except while used in hunting.
- d. Dog training is prohibited.

**88. Echo Canyon Reservoir State Wildlife Area - Archuleta County**

- a. Launching and use of all vessels is allowed.
- b. Operating a vessel in a manner that creates a whitewater wake is prohibited.
- c. Discharge of firearms or bows is prohibited, except while hunting.
- d. Snowmobile use is prohibited.
- e. Dogs are allowed but must be kept under control on a physical leash by the handler at all times, except as authorized in #900(C)(15).

**89. Elk Springs Ranch State Wildlife Area - Moffat County**

- a. Public access is prohibited from March 1 through August 14.

**90. Elliott State Wildlife Area - Morgan County**

- a. Public access is prohibited from 9:00 p.m. – 4:00 a.m.
- b. All recreational activities, except deer hunting, are prohibited on the opening weekend of the regular plains rifle deer season and on the opening day and first weekend of the late plains rifle deer season.
- c. Landowner permission is required to hunt deer on access easement.
- d. The launching or takeout of vessels is prohibited during waterfowl seasons.
- e. Lonetree Tract:
  - 1. From September 1 through the regular duck seasons, hunters must check-in and out at check station. Hunters may not check-in until 4:00 a.m.
- f. Hamlin Tract:
  - 1. From September 1 through the regular duck seasons, hunters must check-in and out at check stations. Hunters may check-in on a first-come, first-serve basis after 4:00 a.m. or after another hunter checks out. Hunters may only hunt the area they check into, and must comply with youth-mentor only area restrictions as posted. Maximum of four (4) hunters allowed per hunting area.
- g. Union Tract:

1. Only waterfowl hunting allowed from designated blinds or areas, and only on Saturdays, Sundays, Wednesdays, and state and federal holidays. Reservations are required and valid until sunrise, and are limited to three (3) per hunter annually. Reservations must be made in accordance with #901.A of these regulations.
2. All hunters must check-in and out at check station. Hunters may not check-in until 4:00 a.m. and can only hunt the area reserved or which they check into. Hunters may check-in on a first-come, first-serve basis after a hunter checks out or after sunrise. A maximum of four (4) hunters allowed per hunting area.
3. During waterfowl seasons, scouting is prohibited, except on Thursdays from 10:00 a.m. until 2:00 p.m. All persons must check-in and out at the check station. All firearms and dogs prohibited while scouting.

**91. Emerald Mountain State Wildlife Area - Routt County**

- a. Public access is prohibited from December 1 through July 15.
- b. Public access is prohibited from 9:00 p.m. – 4:00 a.m.
- c. Public access is allowed by foot and horseback only.

**92. Escalante State Wildlife Area - Mesa, Delta & Montrose Counties**

- a. Public access is prohibited on the Hamilton and Lower Roubideau tracts from March 15 through July 31.
- b. Public access is prohibited in the Lower Roubideau tract youth area as posted from August 1 through March 14 except for youth fishing and hunting. No more than one mentor per youth hunter may engage in hunting.
- c. Field trials may be authorized during February, March, August, and September only.
- d. Dog training is prohibited on the Hamilton and Lower Roubideau tracts during any upland game bird or migratory bird season.
- e. Game birds listed in #009(B) of these regulations may be released by the Division or its agent for educational or training purposes without seasonal or numerical restrictions.

**93. Fish Creek State Wildlife Area - Dolores County**

- a. Public access is prohibited from December 1 through June 30.
- b. Camping is allowed in designated parking areas by licensed hunters during an established big game season plus three (3) days before and three (3) days after each season.

**94. Flagler Reservoir State Wildlife Area - Kit Carson County**

- a. Hunting is prohibited, except for youth mentor hunting only. No more than one mentor per youth hunter may engage in hunting.

- b. Camping is allowed by licensed hunters during an established big game season or spring and fall turkey season plus three (3) days before and three (3) days after each season or while actively fishing.
- c. Fires are allowed within an established containment structure in designated areas.

**95. Flanders Ranch State Wildlife Area (Hunting and Fishing Easement) – Routt County**

- a. Public access is allowed by foot only.
- b. Public access is allowed from designated parking areas only.
- c. Fishing is prohibited during established big game hunting seasons.
- d. Waterfowl and big game hunting is allowed by reservation only.
- e. All hunters must comply with the Hunter Reservation System and reservations must be made through the Hunter Reservation System in accordance with #901.A of these regulations.
- f. Discharge of firearms or bows is prohibited, except while hunting.
- g. Launching and take out of vessels is prohibited.
- h. Dogs are allowed but must be kept under control on a physical leash by the handler, except as authorized in #900(C)(15).

**96. Frank State Wildlife Area - Weld and Larimer counties**

- a. Public access, including fishing and wildlife-related recreation, is prohibited north of the Poudre River.
- b. Discharge of firearms or bows is prohibited, except while bowfishing.
- c. Hunting is prohibited.
- d. Operating a vessel in a manner that creates a whitewater wake is prohibited.
- e. Bicycles are allowed.

**97. Franklin Island State Wildlife Area - Mesa County**

- a. Hunting is prohibited, except for waterfowl hunting from designated blinds.
- b. Waterfowl hunting is allowed by reservation only
- c. All hunters must comply with the Hunter Reservation System and reservations must be made through the Hunter Reservation System in accordance with #901.A of these regulations.
- d. Discharge of firearms or bows is prohibited, except while hunting.

**98. Frantz Lake State Wildlife Area - Chaffee County**

- a. Vessel use is prohibited, except for hand-launched vessels that are propelled by hand, wind or electric motor.
- b. Hunting and the discharge of firearms or bows is prohibited.
- c. Water contact activities are allowed.
- d. Bicycles are allowed.
- e. Dogs are allowed but must be kept under control on a physical leash by the handler at all times.

**99. Frenchman Creek State Wildlife Area - Phillips County**

- a. Public access is prohibited from 9:00 p.m. – 4:00 a.m.

**100. Frying Pan State Wildlife Area (Fishing Lease) - Eagle County**

- a. Public access is prohibited except while fishing.
- b. Public access is limited to designated point as posted.
- c. Dogs are prohibited.

**101. Garfield Creek State Wildlife Area - Garfield County**

- a. Public access is prohibited from December 1 through July 15, except for spring turkey hunters.
- b. Grouse hunting is prohibited on the Upper Baldy Unit.
- c. Hunting is prohibited within 75 yards of the center line of Garfield Co Rds 312 and 328.
- d. Discharge of firearms or bows is prohibited in the designated safety zones, or as posted.
- e. Discharge of firearms or bows is prohibited, except while hunting.
- f. Camping is allowed by licensed hunters during an established big game season plus three (3) days before and three (3) days after each season.
- g. Fires are allowed within a containment structure while camping.

**102. Granada State Wildlife Area - Prowers County**

- a. Parking and access is allowed from designated parking areas only.
- b. Public access is prohibited from one (1) hour after sunset until one (1) hour before sunrise, except while actively hunting or fishing.
- c. Midwestern Farms Tract
  - 1. Hunting is prohibited, except in the area south of the river road.
  - 2. Operating a vessel in a manner that creates a whitewater wake is prohibited.

**103. Granby Ranch Conservation Easement - Grand County**

- a. Public access (Gazebo and associated Gazebo trail excluded) is prohibited from November 15 through April 14.
- b. Public access is allowed on designated trails only.
- c. Bicycles are allowed on designated trails only.
- d. Dogs are allowed but must be kept under control on a physical leash by the handler at all times except as authorized in #900(C)(15).
- e. Public access to Granby Ranch Conservation Easement is exempt from requirements set forth in section #900(C)1 of these regulations.

**104. Grand Junction - West Lake State Wildlife Area - Mesa County**

- a. Public access is prohibited from 9:00 p.m. – 6:00 a.m.
- b. Vessel use is prohibited.
- c. Hunting is prohibited.
- d. Dogs are allowed.
- e. Public access to Grand Junction - West Lake State Wildlife Area is exempt from requirements set forth in section #900(C)1 of these regulations.

**105. Granite State Wildlife Area (Fishing Easement) - Chaffee County**

- a. Public access is prohibited, except while fishing.
- b. Launching and take out of vessels is prohibited.
- c. Dogs are prohibited.
- d. Mining activities and panning are prohibited.

**106. Grieve Ranch Conservation Easement - Routt County**

- a. Public access is prohibited on the hay meadows north of Routt County Road 129.
- b. Public access to the Little Snake River while fishing is only allowed on the river corridor plus 20 feet above the high water line on either bank.
- c. Discharge of firearms or bows is prohibited except while hunting.
- d. OHV and snowmobile use is prohibited.
- e. Camping is allowed in designated areas only.
- f. Fires are allowed within a containment structure in designated campgrounds.

**107. Groundhog Reservoir State Wildlife Area - Dolores County**

- a. Launching and use of vessels may be allowed as posted. Contact the Durango CPW office for current information. When allowed, trailered vessels must be launched from CPW boat ramp. When allowed, operating a vessel in a manner that creates a whitewater wake is prohibited.
- b. Snowmobiles are allowed only as an aid in ice fishing.
- c. Dogs are allowed but must be kept under control on a physical leash by the handler at all times, except as authorized in #900(C)(15).
- d. Public access to Groundhog Reservoir State Wildlife Area is exempt from requirements set forth in section #900(C)1 of these regulations.

**108. Gunnison River State Wildlife Area (Van Tuyl and Redden) - Gunnison County**

- a. Bicycles are allowed on the Van Tuyl trail system except as stated in these regulations.
- b. Public access to the Gunnison River is by foot only from the Van Tuyl trail intersection at the Y-gate.
- c. Discharge of firearms or bows is prohibited, except for waterfowl hunting on the Van Tuyl tract only.
- d. Dogs are allowed but must be kept under control on a physical leash by the handler at all times, except when used as an aid in hunting waterfowl.

**109. Gunnison State Wildlife Area - Gunnison County**

- a. Public access is prohibited from December 1 through April 30.
- b. Public access is allowed year-round on the West Beaver Creek trail that originates from National Park Service lands, and crosses the corner of the Gunnison SWA onto Bureau of Land Management lands along the southwest property boundary.
- c. Public access to the Blinberry Gulch parcel is prohibited from December 1 through June 30.
- d. Public access is prohibited from one (1) hour after sunset to one (1) hour before sunrise, except for lawful hunting activities.
- e. Beaver Creek Trail is restricted to foot and horseback travel only.
- f. Camping is allowed in designated areas by licensed hunters during an established big game season plus three (3) days before and three (3) days after each season.
- g. Fires are allowed within a containment structure in designated camping areas.
- h. Archery range users must comply with archery range rules as posted.

**110. Gypsum Ponds State Wildlife Area - Eagle County**

- a. Public access is prohibited between sunset and sunrise, except while hunting or fishing.
- b. Parking and public access is allowed through designated points as posted only.
- c. Launching and take out of vessels prohibited.

- d. Dogs are prohibited from March 15 through July 15. When allowed dogs must be kept under control on a physical leash by the handler at all times except as authorized in #900(C)(15).

**111. Hardeman State Wildlife Area (Fishing Easement) – Lake County**

- a. Public access is prohibited, except while fishing.
- b. Launching and take out of vessels is prohibited.
- c. Hunting and the discharge of firearms or bows is prohibited.
- d. Dogs are prohibited.
- e. Mining activities and panning are prohibited.

**112. Harmon State Wildlife Area (Fishing Easement) - Chaffee County**

- a. Public access is prohibited, except while fishing.
- b. Public access is prohibited from one (1) hour after sunset to one (1) hour before sunrise.
- c. Hunting and the discharge of firearms or bows is prohibited.
- d. Dogs are prohibited.

**113. Haviland Lake State Wildlife Area - La Plata County**

- a. Vessel use is prohibited, except for hand-launched vessels that are propelled by hand, wind or electric motor.
- b. Discharge of firearms or bows is prohibited, except while hunting.
- c. Dogs are allowed but must be kept under control on a physical leash by the handler at all times except as authorized in #900(C)(15).

**114. Hayden Shooting Range – Routt County**

- a. Public access is prohibited from sunset to sunrise.
- b. Exploding targets and any targets other than paper and cardboard are prohibited.
- c. All rounds must impact designated berms, except for shotguns using bird shot.

**115. Headwaters Ranch State Wildlife Fishing Easement – Lake County**

- a. Public access is prohibited, except while fishing.
- b. Parking and access is allowed from designated parking areas only.
- c. Dogs are prohibited.

**116. Heckendorf State Wildlife Area - Chaffee County**

- a. Parking and access is allowed from designated parking areas only.

- b. Public access is prohibited from August 15 through April 30, except while hunting or while wildlife viewing from established parking areas.

**117. Hereford Haven State Wildlife Area – Routt County**

- a. Public access is allowed by foot only.
- b. Waterfowl hunting is allowed by reservation only.
- c. All hunters must comply with the Hunter Reservation System and reservations must be made through the Hunter Reservation System in accordance with #901.A of these regulations.
- d. Big game and small game hunting prohibited.
- e. Discharge of firearms or bows is prohibited, except while hunting.
- f. Fishing is prohibited during established big game seasons.
- g. Dogs are allowed but must be kept under control on a physical leash by the handler at all times, except when used as an aid in hunting.

**118. Higel State Wildlife Area - Alamosa County**

- a. Public access is prohibited from September 1 through February 14, except on Saturdays, Sundays, Wednesday, and state and federal holidays.
- b. From September 1 through February 14, a valid access permit must be obtained. A maximum of 25 permits will be issued per day and are available at no charge on a first-come, first-served basis. Permits may be obtained by emailing [montevista.wildlife@state.co.us](mailto:montevista.wildlife@state.co.us) or by calling (719) 587-6900.
  - 1. Reservations may be made up to 14 days in advance, but not less than two days before the date requested.
- c. Public access is prohibited from February 15 through July 15 annually.
- d. The Area Wildlife Manager may authorize special use of the area during closures to accommodate educational or scientific uses if it will not be detrimental to nesting or migrating water birds.

**119. Hohnholz Lakes State Wildlife Area - Larimer County**

- a. Boating is prohibited, except for craft propelled by hand, wind or electric motor.
- b. Camping is prohibited, except within the Laramie River camping area.
- c. Public access is prohibited on the Grace Creek access road except to licensed hunters, beginning August 16 through the last day of the fourth rifle season.
- d. Sail surfboards are prohibited.

**120. Holbrook Reservoir State Wildlife Area - Otero County**

- a. Discharge of firearms or bows is prohibited in the designated safety zones, or as posted.

- b. Launching and use of all vessels is allowed.
- c. Water contact activities are allowed.
- d. Camping is allowed in designated and established camping areas.
- e. Fires are allowed within an established containment structure in designated areas.

**121. Holly State Wildlife Area - Prowers County**

- a. Discharge of firearms or bows is prohibited in the designated safety zones, or as posted.

**122. Holyoke State Wildlife Area - Phillips County**

- a. Public access is prohibited from 9:00 p.m. – 4:00 a.m.

**123. Home Lake State Wildlife Area - Rio Grande County**

- a. Public access is prohibited from sunset to sunrise, except for fishing.
- b. Hunting and the discharge of firearms or bows is prohibited.
- c. Vessel use is prohibited, except for launching and use of vessels that are propelled by hand, wind, electric motor, or motorboats up to 10 horsepower.
- d. Dogs are allowed but must be kept under control on a physical leash by the handler at all times, except as authorized in #900(C)(15).
- e. Public access to Home Lake State Wildlife Area is exempt from requirements set forth in section #900(C)1 of these regulations.

**124. Horse Creek Reservoir State Wildlife Area (Timber Lake) - Bent & Otero Counties**

- a. Public access is prohibited from one (1) hour after sunset to one (1) hour before sunrise daily, except while fishing.
- b. Public access to the frozen surface of the lake is prohibited.
- c. Public access to the dams, inlets, and outlet structures is prohibited, except while fishing.

**125. Horsethief Canyon State Wildlife Area - Mesa County**

- a. Public access is prohibited from March 15 through July 15 as posted except while spring turkey hunting.
- b. Public access is prohibited between sunset and sunrise, except while fishing and hunting.
- c. All turkey hunting; and waterfowl hunting west of Blind #1 south of the Colorado River are allowed by reservation only.
- d. All turkey hunters; and waterfowl hunters west of Blind #1 south of the Colorado River must comply with the Hunter Reservation System and reservations must be made through the Hunter Reservation System in accordance with #901.A of these regulations.
- e. Waterfowl hunting is prohibited from Wednesday through Friday of each week, except for on Thanksgiving Day, Christmas Day, and New Year's Day.

- f. Hunting is allowed with shotguns, hand-held bows, and muzzle-loading rifles or by falconry.
- g. Quail hunting is prohibited.
- h. Discharge of firearms or bows is prohibited in the designated safety zones, or as posted.
- i. Dogs are allowed but must be kept under control on a physical leash by the handler at all times except as authorized in #900(C)(15).
- j. Public access to Horsethief Canyon State Wildlife Area is exempt from requirements set forth in section #900(C)1 of these regulations.

**126. Hot Creek State Wildlife Area - Conejos County**

- a. Vehicles are prohibited from January 1 through April 30.
- b. Snowmobile use is prohibited.
- c. Camping is allowed by licensed hunters during an established big game season plus three (3) days before and three (3) days after each season.
- d. Fires are allowed within a containment structure.

**127. Hot Sulphur Springs State Wildlife Area - Grand County**

- a. Public access is prohibited on the Byers Canyon Rifle Range, except between sunrise and sunset.
- b. Public access on the Byers Canyon Rifle Range is prohibited from January 1 through April 30.
- c. Discharge of firearms or bows is prohibited, except while hunting or on the designated shooting range.
- d. Camping is allowed in designated campgrounds, in designated sites from May 15 through December 15.
- e. Fires are allowed within an established containment structure in designated areas.
- f. Dogs are allowed but must be kept under control on a physical leash by the handler at all times except as authorized in #900(C)(15).

**128. Huerfano State Wildlife Area - Huerfano County**

- a. Camping is allowed by licensed hunters during an established big game season or spring and fall turkey season plus three (3) days before and three (3) after each season or when engaged in fishing activities.

**129. Hugo State Wildlife Area - Lincoln County**

- a. Camping is allowed by licensed hunters during an established big game season or spring and fall turkey season plus three (3) days before and three (3) days after each season or while actively fishing.
- b. Fires are allowed within an established containment structure in designated areas.

**130. Indian Run State Wildlife Area - Routt County**

- a. Discharge of firearms or bows is prohibited, except while hunting.
- b. Discharge of firearms or bows is prohibited in designated safety zones, or as posted.
- c. Camping is allowed in designated areas only.
- d. Fires are allowed within a containment structure.

**131. Jackson Lake State Wildlife Area - Morgan County**

- a. Public access is prohibited from 9:00 p.m. – 4:00 a.m., except while fishing.
- b. Fishing is prohibited from October 1 through the dark goose season.
- c. Ice fishing is prohibited.
- d. Discharge of firearms or bows is prohibited, except while hunting.
- e. Hunting with centerfire rifles is prohibited.
- f. Vessels and hunting are prohibited on frozen surface of lake.
- g. During the teal season and the first split of the regular duck season, reservations are required on Saturdays, Sundays, and state and federal holidays to hunt waterfowl. Reservations are valid until sunrise and are limited to three (3) per hunter annually. Reservations must be made through the Hunter Reservation System in accordance with #901.A of these regulations. Reservations are not required Monday through Friday, except state and federal holidays, and hunters may check-in on a first-come, first-served basis.
- h. Waterfowl hunters must check-in and out at the check station. Hunters may not check-in until 4:00 a.m. and can only hunt the area reserved. Hunters may check-in on a first-come, first-served basis after a hunter checks out or after sunrise if a hunter has not checked in. A maximum of four (4) hunters are allowed per hunting area.

**132. Jackson State Wildlife Area (Fishing Lease) - Garfield County**

- a. Public access is prohibited, except while fishing.
- b. Public access is allowed from designated points as posted only.
- c. Dogs are prohibited.

**133. James M. John State Wildlife Area - Las Animas County**

- a. Public access is prohibited from December 1 through June 30.
- b. Hunting access is prohibited during the archery, muzzleloader and regular rifle bear, deer and elk seasons, except for licensed big game hunters that have a hunting access permit. Permits are issued through a drawing process. Applications for fall hunting access permits are available July 1 online. Applications are due July 21. Permit holders must comply with all provisions of the hunting access permit.
- c. Camping is allowed by licensed hunters during an established big game or turkey season plus three (3) days before and three (3) days after each season.

- d. Camping is prohibited within one-hundred (100) feet of any stream.
- e. Dogs are prohibited.

**134. James Mark Jones State Wildlife Area - Park County**

- a. Public access is prohibited January 1 through May 1.
- b. Camping is allowed from May 2 through August 13.
- c. Camping is allowed by licensed hunters from August 14 through the end of the late elk season.
- d. Fires are allowed within an established containment structure in designated areas.
- e. Dog training and field trials are prohibited.

**135. Jean K. Tool State Wildlife Area - Morgan County**

- a. Public access is prohibited from 9:00 p.m. – 4:00 a.m.
- b. All recreational activities, except deer hunting, are prohibited on the opening weekend of the regular plains rifle deer season and on the opening day and first weekend of the late plains rifle deer season.
- c. The launching or takeout of vessels is prohibited during waterfowl seasons.

**136. Jensen State Wildlife Area - Rio Blanco County**

- a. Public access is prohibited from January 1 through July 15.
- b. Discharge of firearms or bows is prohibited, except while hunting.
- c. Camping is allowed in designated areas only.
- d. Fires are allowed within a containment structure.

**137. Jerry Creek Reservoirs State Wildlife Area (Jerry Creek Reservoirs #1 and #2) Mesa County**

- a. Public access to the frozen surface of the lake is prohibited.
- b. Vessel use is prohibited, except for launching and use of float tubes for fishing.
- c. Hunting is prohibited.
- d. Discharge of firearms or bows is prohibited.

**138. Jim Olterman/Lone Cone State Wildlife Area - Dolores County**

- a. Snowmobile use is prohibited.

- b. Camping is allowed in designated areas by licensed hunters during an established big game season or spring turkey season plus (3) days before and (3) days after each season.

**139. Joe Moore Reservoir State Wildlife Area - Montezuma County**

- a. Launching and use of vessels may be allowed as posted. Contact the Durango CPW office for current information. When allowed, operating a vessel in a manner that creates a whitewater wake is prohibited.
- b. Discharge of firearms or bows is prohibited, except while hunting.
- c. Dogs are allowed but must be kept under control on a physical leash by the handler at all times, except as authorized in #900(C)(15).

**140. Jumbo (Julesburg) Reservoir State Wildlife Area - Logan and Sedgwick Counties**

- a. Property is limited to 250 vehicles.
- b. Hunting is prohibited from the frozen surface of the lake.
- c. Discharge of firearms or bows is prohibited, except while hunting.
- d. Launching and use of all vessels is allowed.
- e. Waterskiing is prohibited from 7:00 p.m. – 10:00 a.m., Friday through Monday of Memorial Day weekend.
- f. Vessels are prohibited within 50 feet of outlet structure.
- g. Launching of motorized vessels or sailboats is prohibited if the Aquatic Nuisance Species (ANS) inspection station is closed.
- h. Hand-launched and hand-powered vessels shall only be used for fishing, to set-up/pick-up decoys or retrieve downed waterfowl after the ANS inspection station closes for the year or until the reservoir is frozen.
- i. Camping is allowed in designated areas in designated number sites.
- j. One camping unit is allowed per campsite.
- k. Quiet hours will be enforced from 10:00 p.m. – 6:00 a.m. Legal hunting activities are except from quiet hours.
- l. Fires are allowed within a containment structure in designated camping areas.
- m. Dogs are allowed but must be kept under control on a physical leash by the handler at all times except as authorized in #900(C)(15).

**141. Jumping Cow State Wildlife Area - Elbert County**

- a. Hunting access is allowed by permit only. Hunters must have a valid license for their activity prior to applying for a permit. Permit holders shall have their permit on their person at all times while on the property. Permits may designate specific geographic hunting zones; in this case permits are restricted to the listed zone and are not valid property-wide. Access permits for hunters will be issued free of charge. Permits may be obtained via a drawing process. Permits on the Woodard Unit will be issued with priority

given to mobility-impaired hunters and youth (accompanied by one hunting mentor). Applications are available from the CPW in Denver (303)291-7227. Application due dates are as follows:

1. Applications for fall hunting access are due the 3rd Monday in August.
  2. Spring turkey applications are due the 3rd Monday in March.
- b. Hunting is restricted to dove, turkey, doe pronghorn, antlerless elk, antlerless white-tailed deer, and antlerless mule deer. Hunting on the Woodard Unit is restricted to waterfowl, small game (excluding dove, turkey, and coyote), doe pronghorn, antlerless mule deer, and antlerless white-tailed deer.
  - c. Permitted hunters may take one other person (an observer) who is not hunting with them onto the property; however that person must remain with the permit holder at all times. On the Woodard Unit, a mobility-impaired person may bring two non-hunting companions.
  - d. Permitted hunters may not enter the property prior to the first Monday after the opening day of their individual season. Permits valid for hunting dove, wild turkey, or that are valid for the Woodard Unit only, may access the property on opening day of their season.
  - e. Vehicular access to the property is restricted. Motor vehicle use is only allowed on marked existing roadways that lead to marked parking areas. All other access is restricted to foot and horseback only. On the Woodard Unit, mobility-impaired hunters are allowed to use an Off-highway vehicle (OHV) for hunting and game retrieval as specified on their permit.
  - f. All gates on the property shall be left in the condition in which they are found after passing through the gateway.
  - g. Public access is allowed from two hours prior to sunrise to one hour after sunset except that when an animal is harvested the successful hunter is allowed to remain as long as is necessary to remove the animal.
  - h. Dogs are prohibited on the Woodard Unit.

**142. Junction Butte State Wildlife Area - Grand County**

- a. Vehicles are prohibited, except from the day after Labor Day through December 31.

**143. Karney Ranch State Wildlife Area - Bent County**

- a. Public access is prohibited from one (1) hour after sunset until one (1) hour before sunrise, except when an animal is harvested the successful hunter may remain as long as necessary to remove the animal.
- b. Public access is prohibited in the designated safety zones, or as posted.
- c. Parking and access is allowed from designated parking areas only.
- d. Ornate box turtle collection and/or release is prohibited.
- e. Night hunting with artificial light may be permitted as provided in regulation #303.E.10.

**144. Karval Reservoir State Wildlife Area - Lincoln County**

- a. Camping is allowed by licensed hunters during an established big game season or spring and fall turkey season plus three (3) days before and three (3) days after each season or while actively fishing.
- b. Fires are allowed within an established containment structure in designated areas.

**145. Kemp-Breeze State Wildlife Area - Grand County**

- a. Public access on the Breeze Unit hay meadow wetland is prohibited from March 15 through July 15.
- b. Fishing at the Breeze Unit Kids Pond is restricted to youth fishing only and those anglers with mobility impairments.
- c. Dogs are allowed but must be kept under control on a physical leash by the handler at all times except as authorized in #900(C)(15).

**146. Kinney Lake State Wildlife Area- Lincoln County**

- a. Camping is allowed by licensed hunters during an established big game season or spring and fall turkey season plus three (3) days before and three (3) days after each season or while actively fishing.
- b. Fires are allowed within an established containment structure in designated areas.

**147. Knight-Imler State Wildlife Area - Park County**

- a. Public access is prohibited beyond 25 feet from the center line of the stream.

**148. Knudson State Wildlife Area - Logan County**

- a. Public access is prohibited from 9:00 p.m. – 4:00 a.m.
- b. All recreational activities, except deer hunting, are prohibited on the opening weekend of the regular plains rifle deer season and on the opening day and first weekend of the late plains rifle deer season.
- c. Landowner permission required to hunt deer on access easement.
- d. Discharge of firearms or bows is prohibited, except while hunting.
- e. Horse use is prohibited, except when used as an aid in hunting.
- f. The launching or takeout of vessels is prohibited during waterfowl seasons.

**149. La Jara Reservoir State Wildlife Area - Conejos County**

- a. Camping is allowed, except during established big game seasons when camping is allowed only by licensed big game hunters plus three (3) days before and three (3) days after each season.
- b. Fires are allowed within a containment structure.

**150. La Jara Creek State Wildlife Area - Conejos County**

- a. Vehicles are prohibited from January 1 through the last Thursday prior to Memorial Day.
- b. Snowmobile use is prohibited.
- c. Camping is allowed while engaged in hunting or fishing activities.
- d. Fires are allowed within a containment structure.

**151. Lake Beckwith State Wildlife Area - Pueblo County**

- a. Ice fishing and all public access to the frozen surface of the lake is prohibited.
- b. Hunting and the discharge of firearms or bows is prohibited.
- c. Vessel use is prohibited except for hand-launched vessels that are propelled by hand, wind or electric motor.
- d. Dogs are allowed but must be kept under control on a physical leash by the handler at all times.
- e. Public access to Lake Beckwith State Wildlife Area is exempt from requirements set forth in section #900(C)1 of these regulations.

**152. Lake Dorothea State Wildlife Area - Las Animas County**

- a. Public access to trails A & B is allowed by foot, bicycle, and horseback use only.
- b. Public access to trails C & D is allowed by foot and horseback only. Public access to these trails is prohibited from December 1 through April 30 and from May 15 through June 30, except for licensed spring turkey hunters.
- c. Parking and access is allowed from designated parking areas only.
- d. Hunting access is prohibited during the archery, muzzleloader, and regular rifle bear, deer and elk seasons, except for licensed big game hunters that have a hunting access permit. Permits are issued through a drawing process. Applications for fall hunting access permits are available July 1 online. Applications are due July 21. Permit holders must comply with all provisions of the hunting access permit.
- e. Trapping is prohibited.
- f. Vessel use is prohibited, except for hand-launched vessels that are propelled by hand when used as an aid for fishing.
- g. Camping is allowed by licensed hunters during an established big game, spring and fall turkey season plus three (3) days before and three (3) days after each season.
- h. Camping is prohibited within two hundred (200) yards of Lake Dorothea or one-hundred (100) feet of any stream, except in designated areas.

**153. Lake John State Wildlife Area - Jackson County**

- a. Discharge of firearms or bows is prohibited, except while hunting.

- b. Camping is allowed west of Lake John Dam.
- c. Fires are allowed within an established containment structure in designated areas.
- d. Dogs are allowed but must be kept under control on a physical leash by the handler at all-time except as authorized in #900(C)(15).

**154. Lake Pueblo State Wildlife Area - Pueblo County**

- a. Discharge of firearms or bows is prohibited, except shotguns or bows may be used while hunting or bowfishing.
- b. Launching and use of all vessels is allowed.
- c. Water contact activities are allowed.
- d. Jumping, diving, or swinging from cliffs, ledges or man-made structures is prohibited, including, but not limited to, boat docks, marina infrastructure, and the railroad trestle in Turkey Creek.
- e. Bicycles are prohibited.
- f. Field trials may be authorized during February, March, August, and September only.

**155. Leatha Jean Stassen State Wildlife Area - Mesa County**

- a. Public access is prohibited between sunset and sunrise except while fishing.
- b. Hunting is prohibited.

**156. Lennartz State Wildlife Area - Logan County**

- a. Public access is prohibited.

**157. Little Snake State Wildlife Area - Moffat County**

- a. The placing of a portable blind, marker, stand or related structure is prohibited prior to August 1 annually.
- b. Camping is allowed in self-contained camping trailers or campers by licensed hunters during any deer, elk, or pronghorn season plus three (3) days before and (3) days after each season.

**158. Loma Boat Launch State Wildlife Area - Mesa County**

- a. Parking and access is allowed from designated areas only.
- b. Launching and use of vessels is allowed, except that the launching and take out of personal watercraft (PWC) is prohibited.
- c. Discharge of firearms or bows is prohibited.
- d. Dogs are allowed.

**159. Lon Hagler State Wildlife Area - Larimer County**

- a. Public access is prohibited from one (1) hour after sunset to one (1) hour before sunrise, except while fishing.
- b. Parking is allowed in designated parking areas only.
- c. Fishing is prohibited in the inlet structure and the annex pond.
- d. Vessel use is prohibited, except when used as an aid for fishing. Sailboats are prohibited.
- e. Operating a vessel in a manner that creates a whitewater wake is prohibited.
- f. Horse use is prohibited.
- g. Target practice is prohibited.
- h. Dogs are allowed but must be kept under control on physical leash by the handler at all times unless on a vessel.
- i. Dogs are prohibited west of the lake side parking lots except between September 1 and the last day of February when used as an aid to hunting.
- j. Dogs are prohibited on the annex pond and adjacent lands, as posted, to protect wildlife habitat and nesting wildlife.

**160. Lone Dome State Wildlife Area - Montezuma and Dolores counties**

- a. Overnight parking is prohibited, except in designated areas.

**161. Louisiana Purchase Ranch State Wildlife Area (Access Easement) – Moffat County**

- a. Public access is prohibited, except while deer or elk hunting.
- b. Hunting allowed by reservation only.
- c. All hunters must comply with the Hunter Reservation System and reservations must be made through the Hunter Reservation System in accordance with #901.A of these regulations.
- d. Discharge of firearms or bows is prohibited, except while hunting.
- e. Vehicle use is prohibited, except for on designated roadways or through permission of the ranch owners. All other access is allowed by foot only.
- f. Fishing is prohibited.

**162. Love Meadow Watchable Wildlife Area - Chaffee County**

- a. Public access is prohibited, except while wildlife viewing from established parking area.
- b. Public access to Love Meadow Watchable Wildlife Area is exempt from requirements set forth in section #900(C)1 of these regulations.

**163. Manville State Wildlife Area (Fishing Lease) - Jackson County**

- a. Public access is prohibited, except while fishing.
- b. Discharge of firearms or bows is prohibited.

**164. Mason Family State Wildlife Area – Hinsdale County**

- a. Camping is allowed in designated areas only.
- b. Fires are allowed within a containment structure in designated camping areas.
- c. Food, trash or other attractants must be stored or secured in bear-resistant containers or inside vehicles.
- d. Dogs are allowed but must be kept under control on a physical leash by the handler at all times, except as authorized in #900(C)(15).

**165. McCluskey State Wildlife Area - Delta County**

- a. Public access is prohibited, except while hunting or trapping.
- b. Public access is prohibited from the day after the conclusion of the annual big game seasons through April 30.
- c. Dogs are prohibited.

**166. Meeker Pastures State Wildlife Area - Rio Blanco County**

- a. Hunting big game is allowed with archery equipment only.

**167. Melon Valley State Wildlife Area - Otero County**

- a. Hunting is prohibited on weekends, except for youth mentor hunting only. No more than one mentor per youth hunter may engage in hunting.
- b. Camping is allowed from August 15 through May 31.

**168. Messex State Wildlife Area - Washington and Logan Counties**

- a. Public access is prohibited from 9:00 p.m. – 4:00 a.m.
- b. All recreational activities, except deer hunting, are prohibited on the opening weekend of the regular plains rifle deer season and on the opening day and first weekend of the late plains rifle deer season.
- c. Landowner permission required to hunt deer on access easement.
- d. The launching or takeout of vessels is prohibited during waterfowl seasons.

**169. Mike Higbee State Wildlife Area - Prowers County**

- a. Public access is prohibited from one (1) hour after sunset until one (1) hour before sunrise, except while camping or while actively hunting or fishing.

- b. Game birds listed in #009(B) of these regulations may be released by the Division or its agent for educational or training purposes without seasonal or numerical restrictions.
- c. Camping is allowed in designated and established camping areas.

**170. Miller Ranch State Wildlife Area - Gunnison County**

- a. Public access is prohibited from March 1 through June 30.
- b. Hunting is prohibited north of Gunnison Co Rd 7 except for mentored youth hunting by permit only. A maximum of four free permits will be available daily on a first-come, first-served basis. Permits are available by reservation through the Gunnison Service Center at [300 W. New York Ave. 200 S. Spruce Street](#), Gunnison, CO, or by calling 970-641-7060. Reservations may be made up to 30 days in advance but not less than two days before the requested hunt date. Upon reservation, the youth hunter and mentor will be provided a map with access points and restrictions. Mentors are not allowed to hunt.
- c. Discharge of firearms or bows is prohibited in the designated safety zones, or as posted.
- d. Dogs are prohibited.

**171. Mitani-Tokuyasu State Wildlife Area - Weld County**

- a. Public access is prohibited from one (1) hour after sunset through 4:00 a.m.
- b. Public access prohibited from the day after the close of the spring turkey season through August 31.
- c. Hunting access is limited to occupants of vehicles legally parked in 1 of 4 spaces in the designated parking area. A reservation is required to occupy a parking space from 4:00 a.m. until noon. Reservations may be made in accordance with #901.A of these regulations. After noon each day, parking spaces are available on a first-come, first-serve basis.
- d. Discharge of firearms or bows is prohibited, except while hunting.
- e. Horse use is prohibited.

**172. Mogensen Ponds State Wildlife (Fishing) Area - Mesa County**

- a. Hunting is prohibited, except for waterfowl hunting from designated blinds.
- b. Discharge of firearms or bows is prohibited, except while hunting.

**173. Mountain Home Reservoir State Wildlife Area - Costilla County**

- a. Launching and use of all vessels is allowed.
- b. Operating a vessel in a manner that create a whitewater wake is prohibited.
- c. Camping is allowed in designated areas.
- d. Fires are allowed within an established containment structure in designated camping areas.

- e. Dogs are allowed but must be kept under control on a physical leash by the handler at all times, except when used as an aid in hunting.

**174. Mount Evans State Wildlife Area - Clear Creek County**

- a. Public access is prohibited from January 1 through June 14.
- b. Public access is restricted to only fishing and hunting activities from the day after Labor Day through the end of the 4th regular rifle season.
- c. Vehicles are prohibited from the day after Labor Day through June 14, except during regular rifle deer and elk seasons.
- d. Groups of 25 or more people must obtain a permit prior to use. Permits shall be issued to limit access to no more than one group at one time.
- e. Camping is allowed but limited to five (5) days in any 45 day period, except during established big game seasons when camping is restricted to licensed big game hunters.
- f. Dogs are allowed but must be kept under control on a physical leash by the handler at all times, except as authorized in #900(C)(15).

**175. Mount Ouray State Wildlife Area - Chaffee County**

- a. Parking and access is allowed from designated parking areas only.
- b. Hunting with centerfire rifles is prohibited.

**176. Mount Shavano State Wildlife Area - Chaffee County**

- a. Public access is prohibited south of Chaffee Co. Rd. 154 and west of Colorado State Highway 291.
- b. From the west end of the Mount Shavano SFU, upstream to the marked property boundary, discharge of firearms or bows is prohibited, except while hunting. Hunting with centerfire rifles is prohibited.
- c. From the east end of the Mount Shavano SFU, downstream to the Colo. Hwy 291 Bridge, discharge of firearms or bows is prohibited except while hunting. Hunting is allowed with hand-held bows only.
- d. Hunting is prohibited from the Colorado State Highway 291 Bridge downstream to Chaffee County Road 175.
- e. Bicycles are allowed.
- f. Dogs are allowed but must be kept under control on a physical leash by the handler at all times.

**177. Mount Werner State Wildlife Area (Fishing Easement) – Routt County**

- a. Public access is prohibited, except while fishing.
- b. Discharge of firearms or bows is prohibited.

**178. Murphy State Wildlife Area (Fishing Lease) - Jackson County**

- a. Public access is prohibited, except while fishing.
- b. Discharge of firearms or bows is prohibited.

**179. Nakagawa State Wildlife Area - Weld County**

- a. Discharge of firearms or bows is prohibited, except when hunting.

**180. Narraquinnep Reservoir State Wildlife Area - Montezuma County**

- a. Public access is prohibited from one (1) hour after sunset to one (1) hour before sunrise, except while fishing.
- b. Launching and use of vessels may be allowed as posted. Contact the Durango CPW office for current information.
- c. Glass containers are prohibited.
- d. Dogs are allowed but must be kept under control on a physical leash by the handler at all times, except as authorized in #900(C)(15).
- e. Public access to Narraquinnep Reservoir State Wildlife Area is exempt from requirements set forth in section #900(C)1 of these regulations.

**181. North Fork State Wildlife Area - Larimer County**

- a. Public access is prohibited, except while fishing.
- b. Public access to North Fork State Wildlife Area is exempt from requirements set forth in section #900(C)1 of these regulations.

**182. North Lake State Wildlife Area - Las Animas County**

- a. Vessel use is prohibited, except for hand-launched vessels that are propelled by hand, wind or electric motor when used as an aid to fishing.

**183. Oak Ridge State Wildlife Area - Rio Blanco County**

- a. Public access is prohibited on the Oak Ridge Unit from December 1 through July 15 except for CPW youth outreach turkey hunts April 1 through 30 and valid GMU 23 turkey license holders and their companion May 1 through 31.
- b. Public access is prohibited on Sleepy Cat Ponds Unit and Sleepy Cat Fishing Easement, except while fishing.
- c. Discharge of firearms or bows is prohibited, except while hunting.
- d. Hunting is allowed south of Rio Blanco Co Rd 8, west of Rio Blanco Co Rd 17, and north and east of Rio Blanco Co Rd 10 by archery equipment only.
- e. Launching and use of vessels not associated with fishing or hunting activities are allowed in designated areas only.

- f. Operating a vessel in a manner that creates a whitewater wake is prohibited on Lake Avery.
- g. Water contact activities are allowed in designated areas only.
- h. Camping is allowed in designated areas only.
- i. Dogs are allowed but must be kept under control on a physical leash by the handler at all times on the Lake Avery Unit except as authorized in #900(C)(15).

**184. Ogden-Treat State Wildlife Area (Fishing Easement) - Fremont County**

- a. Public access is prohibited, except while fishing.
- b. Parking and access is allowed from designated parking areas only.
- c. Dogs are prohibited.

**185. Orchard Mesa Wildlife Area - Mesa County**

- a. Public access is allowed only from the parking area located on "C" Road between 30 and 31 Roads.
- b. Public access is allowed by foot only.
- c. Public access is prohibited from March 15 through July 15.
- d. Small game hunting is prohibited, except for waterfowl hunting.
- e. Big game and waterfowl hunting is allowed by reservation only.
- f. Big game hunting is allowed with archery equipment only.
- g. Waterfowl hunting is allowed from designated blinds only.
- h. All hunters must comply with the Hunter Reservation System and reservations must be made through the Hunter Reservation System in accordance with #901.A of these regulations.
- i. Discharge of firearms or bows is prohibited, except while hunting.

**186. Orient Mine State Wildlife Area – Saguache County**

- a. Public access to adjacent public lands through the property for hunting purposes is allowed October 1 through May 31 annually. Hunters wishing to gain access across the property to adjacent federal lands must contact the Orient Land Trust and adhere to their check-in/out procedures.
- b. Public access through the property for all purposes is prohibited three (3) hours before sunrise and three (3) hours after sunset, except when an animal has been harvested on adjacent public lands.
- c. Public access to the property is allowed by foot only from adjacent public lands.

- d. Hunting and the discharge of firearms or bows is prohibited.
- e. Public access to Orient Mine State Wildlife Area is exempt from requirements set forth in section #900(C)1 of these regulations.

**187. Overland Trail State Wildlife Area - Logan County**

- a. Public access is prohibited from 9:00 p.m. – 4:00 a.m.
- b. All recreational activities, except deer hunting, are prohibited on the opening weekend of the regular plains rifle deer season and on the opening day and first weekend of the late plains rifle deer season.
- c. The launching or takeout of vessels is prohibited during waterfowl seasons.

**188. Owl Mountain State Wildlife Area - Jackson County**

- a. Discharge of firearms prohibited, except while hunting.

**189. Paddock State Wildlife Area - Lake County**

- a. Public access is prohibited from August 15 through November 30, except while hunting with a valid bighorn sheep, deer, elk or bear license.
- b. Fishing access is prohibited, except in Iowa Gulch and Upper Empire Gulch.
- c. Dogs are prohibited.

**190. Parachute Ponds State Wildlife Area - Garfield County**

- a. Public access to the frozen surface of the lake is prohibited.
- b. Vessel use is prohibited, except for launching and use of float tubes for fishing only.
- c. Dogs are allowed but must be kept under control on a physical leash by the handler at all times except as authorized in #900(C)(15).

**191. Parvin Lake State Wildlife Area - Larimer County**

- a. Vessel use is prohibited, except for launching and use of float tubes for fishing only.
- b. Anglers must enter the area on foot through the gate at the check station and must check-in and out at the check station when open.

**192. Pastorius Reservoir State Wildlife Area - La Plata County**

- a. Vessel use is prohibited, except for launching and use of vessels that are propelled by hand, wind or electric motor.
- b. Discharge of firearms or bows is prohibited, except while hunting.
- c. Hunting is prohibited, except on Saturdays, Sundays, and Wednesdays.

- d. Dogs are allowed but must be kept under control on a physical leash by the handler at all times, except as authorized in #900(C)(15).

**193. Perins Peak State Wildlife Area - La Plata County**

- a. Public access is prohibited west of La Plata County Road 208 from December 1 through April 30, except turkey hunters.
- b. Public access is prohibited east of La Plata Co Rd 208 from December 1 through July 31.
- c. Camping is allowed by licensed hunters during an established big game season plus three (3) days before and three (3) days after each season.
- d. Discharge of firearms or bows is prohibited, except while hunting.
- e. Snowmobile use is prohibited.
- f. Dogs are allowed but must be kept under control on a physical leash by the handler at all times from May 1 through September 30 west of CR 208 and from August 1 through September 30 east of CR 208, except as authorized in #900(C)(15).
- g. Dogs are allowed pursuant to #900(C)(15) from October 1 through November 30.

**194. Perkins State Wildlife Area (Access Easement) - Grand County**

- a. Public access is prohibited, except while hunting.

**195. Piceance State Wildlife Area - Garfield/Rio Blanco County**

- a. Discharge of firearms or bows is prohibited in the designated safety zones, or as posted on the Little Hills Unit.
- b. Camping is allowed.
- c. Camping is allowed in designated areas only on the Yellow Creek and Square S Units.
- d. Fires are allowed within in a containment structure.

**196. Pikes Peak State Wildlife Area - Teller County**

- a. Public access is prohibited from April 1 through July 15.
- b. Dogs are prohibited.

**197. Plateau Creek State Wildlife Area - Mesa County**

- a. Public access is prohibited from December 1 through April 30, except for on the shooting range.
- b. Discharge of firearms or bows is prohibited, except while hunting or on the designated shooting range.
- c. Camping is allowed by licensed hunters during an established big game season plus three (3) days before and three (3) days after each season.

- d. Fires are allowed within a containment structure while camping.

**198. Playa Blanca State Wildlife Area - Alamosa County**

- a. Public access is prohibited from February 15 through July 15.
- b. Public access is allowed in designated areas on Tuesdays, Thursdays, and Saturdays from July 16 through February 14.
- c. Camping is allowed during waterfowl hunting seasons by licensed waterfowl hunters and only in parking areas with self-contained camping trailers or campers.

**199. Pony Express State Wildlife Area - Sedgwick County**

- a. Public access is prohibited from 9:00 p.m. – 4:00 a.m.
- b. All recreational activities, except deer hunting, are prohibited on the opening weekend of the regular plains rifle deer season and on the opening day and first weekend of the late plains rifle deer season.
- c. The launching or takeout of vessels is prohibited during waterfowl seasons

**200. Pot Creek State Wildlife Area (Access Easement) – Moffat County**

- a. Public access is prohibited, except while elk hunting.
- b. Hunting allowed by reservation only.
- c. All hunters must comply with the Hunter Reservation System and reservations must be made through the Hunter Reservation System in accordance with #901.A of these regulations.
- d. Discharge of firearms or bows is prohibited, except while hunting.
- e. Motor vehicle use is prohibited, except on designated roadways or through permission of the ranch owners. All other public access is allowed by foot only.
- f. Fishing is prohibited.

**201. Pothook Ranch State Wildlife Area (Fishing Easement) – (Slater Creek) Moffat County**

- a. Public access is prohibited, except for fishing, wildlife viewing and hunting with a limited Ranching for Wildlife big game license valid for this property.
- b. Public access is allowed by foot only from the designated parking areas/access points only.
- c. Public fishing is allowed within 20 feet of the high water line of both banks of Slater Creek only.
- d. Discharge of firearms or bows is prohibited, except while hunting.
- e. Overnight parking is prohibited.

**202. Poudre River State Wildlife Area - Larimer County**

- a. Discharge of firearms or bows is prohibited, except when hunting or bowfishing.
- b. Public access to Poudre River State Wildlife Area is exempt from requirements set forth in section #900(C)1 of these regulations.

**203. Prewitt Reservoir State Wildlife Area - Logan and Washington Counties**

- a. Property limited to 250 vehicles.
- b. From October 1 through the dark goose season, fishing is restricted to the dam, ice fishing is restricted to 50 yards of the dam, and boating is prohibited, except for craft propelled by hand or electric motor used to set and pick up decoys and retrieve downed waterfowl.
- c. Hunting prohibited as posted, including hunting from floating devices.
- d. Discharge of firearms or bows is prohibited, except while hunting.
- e. OHV and snowmobile use is prohibited.
- f. Launching and use of all vessels is allowed. Sailing and windsurfing prohibited, except in July and August.
- g. Operating a vessel in a manner that creates a whitewater wake is prohibited.
- h. Waterskiing and personal watercraft (PWC) use is prohibited.
- i. Camping is allowed only in camping areas at designated campsite markers.
- j. Only one camping unit is allowed per campsite.
- k. Quiet hours will be enforced from 10:00 p.m. – 6:00 a.m. Legal hunting activities are exempt from quiet hours.
- l. Fires are allowed within a containment structure in designated camping areas.
- m. Glass containers are prohibited.
- n. Dogs are allowed but must be kept under control on a physical leash by the handler at all times except as authorized in #900(C)(15).

**204. Pridemore State Wildlife Area (Fishing Lease) - Chaffee County**

- a. Public access is prohibited, except while fishing.
- b. Launching and take out of vessels is prohibited.
- c. Dogs are prohibited.

**205. Puett Reservoir State Wildlife Area - Montezuma County**

- a. Launching and use of vessels may be allowed as posted. Contact the Durango CPW office for current information. When allowed, operating a vessel in a manner that creates a whitewater wake is prohibited.
- b. Dogs are allowed but must be kept under control on a physical leash by the handler at all time, except as authorized in #900(C)(15).

**206. Queens State Wildlife Area (Nee Noshe, Nee So Pah, Nee Gronda, Upper Queens and Lower Queens (Neeskah)) - Kiowa County**

- a. Operating a vessel in a manner that creates a whitewater wake in the channel between Upper Queens and Lower Queens (Neeskah) is prohibited.
- b. Swimming is allowed.
- c. Hunters must check-in and out of fields/pits at the check station during waterfowl season.
- d. Camping is allowed in designated and established camping areas.
- e. Fires are allowed within an established containment structure in designated areas.
- f. Nee Noshe
  - 1. From December 1 through the last day of migratory waterfowl season, vessel use is allowed, as posted, only to retrieve downed waterfowl.
  - 2. Launching and use of all vessels is allowed.
  - 3. All water contact activities are allowed.

**207. Radium State Wildlife Area - Grand, Routt, and Eagle Counties**

- a. Hunting is prohibited in the designated safety zone, or as posted.
- b. Camping is allowed except as posted.
- c. Fires are allowed within a containment structure.

**208. Ralston Creek State Wildlife Area - Jefferson County**

- a. Discharge of firearms or bows is prohibited except while hunting.

**209. Ramah State Wildlife Area - El Paso County**

- a. Discharge of firearms or bows is prohibited, except while hunting or bowfishing. Discharge of archery equipment is allowed on the established archery shooting range.
- b. Hunting with centerfire rifles is prohibited.
- c. Game birds listed in #009(B) of these regulations may be released by the Division or its agent for educational or training purposes without seasonal or numerical restrictions.

**210. Red Lion State Wildlife Area - Logan County**

- a. From September 1 through the regular duck seasons, hunters must check-in and out at check station. Hunters may not check-in until 4:00 a.m.
- b. Hunting prohibited from floating devices and frozen surface of the lake.
- c. Vessel use is prohibited, except for hand-launched vessels that are propelled by hand, wind or electric motor when used as an aid for fishing, or to set and pick up decoys, and retrieve downed waterfowl. Vessels must be launched from a designated area as posted.

**211. Red Mountain State Wildlife Area - Grand County**

- a. Public access is prohibited from December 1 through April 14.
- b. Dogs are allowed but must be kept under control on a physical leash by the handler at all times except as authorized in #900(C)(15).

**212. Reddy State Wildlife Area (Fishing Easement) - Lake County**

- a. Public access is allowed while fishing only.
- b. Public access is allowed only within 30 feet of the high water line, or as otherwise posted.
- c. Parking and access is allowed from designated parking areas only.
- d. Dogs are prohibited.

**213. Rio Blanco Lake State Wildlife Area - Rio Blanco County**

- a. Public access to the Rosenlund Unit is allowed for day use only.
- b. Parking and public access is allowed from designated parking areas only.
- c. Hunting big game is allowed with archery equipment only.
- d. Launching and use of all vessels is allowed.
- e. Water contact activities are allowed.
- f. Camping is allowed.
- g. Fires are allowed within a containment structure.
- h. Dogs are allowed but must be kept under control on a physical leash by the handler at all times except as authorized in #900(C)(15).

**214. Rio Grande River State Wildlife Area (Del Norte Fishing Easements) - Rio Grande County**

- a. Public access is prohibited, except while fishing.
- b. Vessel use is prohibited, except for launching and take out of vessels propelled by hand is allowed at the CR 17 ramp.

**215. Rio Grande State Wildlife Area - Rio Grande County**

- a. Public access is prohibited from February 15 through July 15. The Area Wildlife Manager may authorize access during this closure if the proposed access will not adversely impact nesting or wintering bird populations.
- b. From July 16 through February 14, hiking, horseback riding, and dogs kept under control on a physical leash by the handler are allowed on established roads.
- c. From July 16 through February 14, non-motorized vessels lawfully floating through this property may portage around the Centennial Ditch diversion.
- d. The Area Wildlife Manager may post area specific closures to manage waterfowl hunting pressure during established waterfowl seasons, to protect maintenance and construction equipment and to protect human health and safety.
- e. Camping is allowed during waterfowl hunting seasons by licensed waterfowl hunters in those parking areas with toilet facilities.

**216. Rito Hondo Reservoir State Wildlife Area - Hinsdale County**

- a. Vessel use is prohibited, except for launching and use of vessels that are propelled by hand, wind or electric motor when used as an aid for fishing or hunting.

**217. Road Canyon Reservoir State Wildlife Area - Hinsdale County**

- a. Operating a vessel in a manner that creates a whitewater wake is prohibited.

**218. Roaring Fork/Gianinetti State Wildlife Area (Fishing Lease) - Garfield County**

- a. Public access is prohibited, except while fishing.
- b. Public access is allowed from designated points as posted only.
- c. Dogs are prohibited.

**219. Rock Creek State Wildlife Area - Grand County**

- a. Camping is allowed.
- b. Fires are allowed within an established containment structure.

**220. Rocky Ford State Wildlife Area - Otero County**

- a. Camping is allowed from August 15 through May 31.

**221. Roeber State Wildlife Area - Delta County**

- a. Public access is prohibited, except while hunting and fishing.
- b. Public access is prohibited from the day after the conclusion of the annual big game seasons through April 30.
- c. Hunting and the discharge of firearms or bows is prohibited in the open space easement area.

- d. Dogs are prohibited.

**222. Rosemont Reservoir State Wildlife Area - Teller County**

- a. Public access is prohibited in the dam area, vicinity of the caretaker's house, and north side of the reservoir or as posted.
- b. Parking and access is allowed from designated parking areas only.
- c. Vessel use is prohibited, except launching and use of float tubes for fishing only.
- d. Fishing is prohibited from 9:00 p.m. until 5:00 a.m.
- e. Ice fishing is prohibited.
- f. Discharge of firearms is prohibited.
- g. Dogs are prohibited.

**223. Runyon/Fountain Lakes State Wildlife Area - Pueblo County**

- a. Public access is prohibited from 9:30 p.m. - 7:30 a.m., except while fishing.
- b. Vessel use is prohibited, except for hand-launched vessels that are propelled by hand, wind, or electric motor when used as an aid in fishing.
- c. Bicycles are allowed.
- d. Dogs are allowed but must be kept under control on a physical leash by the handler at all times.

**224. Russell Lakes State Wildlife Area - Saguache County**

- a. Public access is prohibited from February 15 through July 15.
- b. Public access is prohibited, except as posted, to protect wintering and nesting waterfowl, and to protect administrative areas of the property.
- c. Section 29 (Herrance Lake and Island Lake) shall be closed during waterfowl hunting season.
- d. During the first split waterfowl season, Russell Lakes SWA shall close at 1:00 p.m. daily to all recreation.
- e. Parking is allowed in designated parking areas only.
- f. Camping is allowed during waterfowl hunting seasons by licensed waterfowl hunters and only in parking areas with self-contained camping trailers or campers.
- g. Field trials may be authorized during February, March, August, and September only.
- h. Public access to established restroom facilities is exempt from requirements set forth in section #900(C)1 of these regulations.

**225. Sam Caudill State Wildlife Area - Garfield County**

- a. Launching and use of vessel is allowed, except that the launching and take out of personal watercraft (PWC) is prohibited.
- b. Discharge of firearms or bows is prohibited.

**226. Sanchez Reservoir State Wildlife Area - Costilla County**

- a. Public access is prohibited, except while fishing.
- b. Discharge of firearms of bows is prohibited.
- c. Camping is allowed.

**227. Sand Draw State Wildlife Area - Sedgwick County**

- a. Public access is prohibited from 9:00 p.m. – 4:00 a.m.
- b. Hunting is allowed for youth/mentor hunting only. A maximum of one (1) mentor per youth hunter may hunt.

**228. Sands Lake State Wildlife Area - Chaffee County**

- a. Hunting and the discharge of firearms or bows is prohibited.
- b. Bicycles are allowed.
- c. Dogs are allowed but must be kept under control on a physical leash by the handler at all times.

**229. Sandsage State Wildlife Area - Yuma County**

- a. Public access is prohibited from 9:00 p.m. – 4:00 a.m.
- b. Discharge of firearms or bows is prohibited, except shotguns with birdshot or bows may be used while hunting.

**230. Sandy Bluffs State Wildlife Area - Yuma County**

- a. Public access is prohibited from June 1 through August 31.
- b. Public access is prohibited from 9:00 p.m. – 4:00 a.m.
- c. Dog training is prohibited.

**231. San Luis Hills SWA - Costilla County**

- a. Camping is allowed while engaged in hunting or fishing activities.
- b. Fires are allowed within a containment structure when associated with hunting or fishing activities.

**232. San Luis Lakes State Wildlife Area - Alamosa County**

- a. Public access north of the buoy line and east-west fence line is prohibited from February 15 through July 15. From July 16 through February 14:
  - 1. Public access is allowed by foot or horseback only.
  - 2. Bicycles are allowed as an aid in hunting and fishing only.
  - 3. Game carts are allowed.
- b. Operating a vessel north of the buoy line is prohibited.
- c. Camping is allowed in designated areas.
- d. Dogs are allowed but must be kept under control on a physical leash by the handler at all times except as authorized in #900(C)(15).

**233. Sarvis Creek State Wildlife Area - Routt County**

- a. Discharge of firearms or bows is prohibited, except while hunting.
- b. Camping is allowed by licensed hunters during an established big game season plus three (3) days before and three (3) days after each season.
- c. Fires are allowed within a containment structure while camping.

**234. Sawhill Ponds – Boulder County**

- a. Public access is prohibited between midnight and 5:00 a.m.
- b. Other activities may be prohibited as posted, to implement the management agreement between Colorado Parks and Wildlife and the City of Boulder.
- c. Vessel use is prohibited.
- d. Hunting is prohibited.
- e. Horseback riding is allowed on established maintenance roads.
- f. Dogs are allowed but must be kept under control on a physical leash by the handler at all times.
- g. Public access to Sawhill Ponds State Wildlife Area is exempt from requirements set forth in section #900(C)1 of these regulations.

**235. Sedgwick Bar State Wildlife Area - Sedgwick County**

- a. Public access is prohibited from 9:00 p.m. – 4:00 a.m.
- b. All recreational activities, except deer hunting, are prohibited on the opening weekend of the regular plains rifle deer season and on the opening day and first weekend of the late plains rifle deer season.
- c. The launching or takeout of vessels is prohibited during waterfowl seasons.

**236. Sego Springs State Wildlife Area - Conejos County**

- a. Public access is prohibited from February 15 through July 15.
- b. Camping is allowed while engaged in hunting or fishing activities.
- c. Fires are allowed within a containment structure while engaged in hunting or fishing activities.
- d. Field trials may be authorized during August and September only.

**237. Seymour Lake State Wildlife Area - Jackson County**

- a. Operating a vessel in a manner that creates a whitewater wake is prohibited.
- b. Discharge of firearms or bows is prohibited, except while hunting.
- c. Camping is allowed in designated areas only.
- d. Fires are allowed within an established containment structure in designated areas.
- e. Dogs are allowed but must be kept under control on a physical leash by the handler at all times except as authorized in #900(C)(15).

**238. Sharptail Ridge State Wildlife Area - Douglas County**

- a. Public access is allowed from sunrise to sunset.
- b. Public access is allowed by foot only.
- c. Hunting is prohibited except for deer and elk hunting only.
- d. Deer and elk hunting is only allowed by permit with a Sharptail Ridge SWA hunting permit obtained by a separate drawing. Hunters must have a limited deer or elk license for unit 51 before applying. No more than two hunters will be permitted daily. Group applications are allowed for a maximum of two (2) applicants per group. Permits will be valid for a minimum of two (2) days and a maximum of three (3) days beginning after Labor Day, and will be based on the length of the underlying season and maximization of individual hunter opportunity. Permit applications are available from the Division in Denver 303-291-7227.
- e. Permitted hunters may take one other person (an observer) who is not hunting with them while hunting, however that person must remain with the hunter at all times.
- f. Permitted hunters may park inside in the parking area behind the gate during the times for which they are permitted. Driving anywhere else on the property is prohibited.
- g. Public access to Sharptail Ridge State Wildlife Area is exempt from requirements set forth in section #900(C)1 of these regulations.

**239. Shriver-Wright State Wildlife Area - Rio Grande County**

- a. Hunting with centerfire rifles is prohibited.

- b. Discharge of firearms or bows is prohibited except while hunting or bows used on the archery range.
- c. Bows used on the archery range must adhere to the following:
  - 1. Target and field point only (no broadheads).
  - 2. Crossbows are prohibited.
  - 3. All persons must adhere to range safety rules as posted.
- d. Camping is allowed during waterfowl hunting seasons by licensed waterfowl hunters and only in parking areas with self-contained camp trailers or campers.
- e. Dogs are allowed but must be kept under control on a physical leash by the handler at all times, except as authorized by #900(C)(15).
- f. Public access to Shriver-Wright State Wildlife Area is exempt from requirements set forth in section #900(C)1 of these regulations.

**240. Sikes Ranch State Wildlife Area - Baca and Las Animas Counties**

- a. Public access is prohibited from one (1) hour after sunset until one (1) hour before sunrise, except when an animal is harvested the successful hunter may remain as long as necessary to remove the animal or when authorized by a night hunting permit.
- b. Public access is prohibited in the building envelope and designated safety zones, or as posted.
- c. Parking and access is allowed from designated parking areas only.
- d. Trapping is prohibited, except by permit only. Permit holders shall have their permit on their person at all times while trapping. Permits may be obtained by calling the Lamar Service Center.

**241. Simmons State Wildlife Area - Yuma County**

- a. Public access is prohibited from June 1 through August 31.
- b. Public access is prohibited from 9:00 p.m. – 4:00 a.m.
- c. Dog training is prohibited.

**242. Simpson Ponds State Wildlife Area - Larimer County**

- a. Public access is prohibited from one (1) hour after sunset to one (1) hour before sunrise except while fishing or when authorized by a night hunting permit.
- b. Vessel use is prohibited, except for hand-launched vessels that are propelled by hand when used as an aid for fishing or hunting.
- c. Discharge of firearms or bows is prohibited, except while hunting or bowfishing.
- d. Horse use is prohibited.

- e. Bicycle riding is prohibited.

**243. Skaguay Reservoir State Wildlife Area - Teller County**

- a. Operating a vessel in a manner that creates a whitewater wake is prohibited.

**244. SKCK State Wildlife Area (Fishing Access) – Routt County**

- a. Public access is prohibited, except while fishing.
- b. Public access is allowed in the designated “Fishing Access Area” and “Public Access Detour” highlighted on the posted property map.
- c. Public access is allowed to walk-in access only.
- d. Public access is prohibited from one (1) hour after sunset to sunrise daily.
- e. Public access is prohibited from December 1 through March 31.
- f. Hunting and discharge of firearms or bows is prohibited.

**245. Smith Lake State Wildlife Area - Larimer County**

- a. Public access is prohibited from one (1) hour after sunset to one (1) hour before sunrise, except while fishing.
- b. Hunting and the discharge of firearms or bows is prohibited.
- c. Operating a vessel in a manner that creates a whitewater wake is prohibited.
- d. OHV and snowmobile use is prohibited.
- e. Dogs are allowed but must be kept under control on a physical leash by the handler at all times, except as authorized in #900(C)(15).

**246. Smith Reservoir State Wildlife Area - Costilla County**

- a. Public access is prohibited from February 15 through July 15 on the north and east shore areas.
- b. Fishing is prohibited from November 1 through the last day of the waterfowl season, except within two-hundred (200) yards of the dam.
- c. Motor vehicles are prohibited within fifty (50) feet of the water.
- d. Field trials may be authorized during February, March, August and September only.

**247. South Republican State Wildlife Area - Yuma County**

- a. Parking and access is allowed from designated parking areas only.
- b. Field trials may be authorized during February, March, August, and September only. No more than two trials may be authorized during the February-March period and no more than one field trial may be authorized during the August-September period.

- c. Waterfowl hunting is prohibited as posted. Waterfowl hunting access is prohibited on the downstream face of the dam.
- d. Camping is allowed in designated and established camping areas.
- e. Fires are allowed within an established containment structure in designated areas.

**248. Spanish Peaks State Wildlife Area - Las Animas County**

- a. Parking and access is allowed from designated parking areas only.
- b. Camping is allowed by licensed hunters during an established big game, spring and fall turkey season plus three (3) days before and three (3) days after each season.
- c. Fires are allowed within an established containment structure in designated camping areas.

**249. Stalker Lake State Wildlife Area - Yuma County**

- a. After October 31, hunting is prohibited, except in areas east of Stalker Lake dam.
- b. Hunting on the western half of Stalker Lake is prohibited.
- c. Discharge of firearms or bows is prohibited, except for bows on the designated archery range.
- d. Discharge of firearms or bows is prohibited, except shotguns with birdshot, or bows may be used while hunting.
- e. Vessel use is prohibited, except for launching and use of vessels that are propelled by hand or electric motor.

**250. Steamboat Springs State Wildlife Area (Fishing Easement) – Routt County**

- a. Public access is prohibited, except while fishing.
- b. Discharge of firearms or bows is prohibited.

**251. Storm Mountain Access Road - Larimer County**

- a. Public access is prohibited as posted.
- b. Off-highway vehicles (OHV) must be trailered until on US Forest Service land.
- c. Public access to the Storm Mountain Access Road is exempt from requirements set forth in section #900(C)1 of these regulations.

**252. Summit Reservoir State Wildlife Area - Montezuma County**

- a. Launching of vessels may be allowed as posted. Contact the Durango CPW office for current information. When allowed, operating a vessel in a manner that creates a whitewater wake is prohibited.

- b. Dogs are allowed but must be kept under control on a physical leash by the handler at all times, except as authorized in #900(C)(15).

**253. Tamarack Ranch State Wildlife Area - Logan County**

- a. Public access is prohibited from 9:00 p.m. – 4:00 a.m.
- b. All recreational activities, except deer hunting, are prohibited on the opening weekend of the regular plains rifle deer season and on the opening day and first weekend of the late plains rifle deer season.
- c. All hunters must check-in and out at the check station, and must park at the hunting area they are checked into. After 9:00 a.m., hunters may hunt adjacent areas. Deer and turkey hunters are only required to check into East, West, or South Tamarack Area.
- d. From October 25 through the regular duck seasons, reservations are available, but not required, on weekends and state and federal holidays. Reservations must be made in accordance with #901.A of these regulations.
- e. A maximum of three (3) field trials may be authorized during February, March, or August, and one (1) in September.
- f. Vessel use is prohibited during waterfowl seasons.
- g. Camping is allowed in designated areas only.
- h. Augmentation Ponds:
  - 1. From the first day of the second duck season through the dark goose season, waterfowl hunting is allowed only through a lottery drawing.
  - 2. Hunting is limited to a specific pond/hunt area on each day.
  - 3. To enter drawing, hunters must send a letter or postcard postmarked by September 30 to the CPW Brush Service Center, with name, address, phone number, CID number, and desired reservation dates. Hunters must possess a valid license to hunt waterfowl to enter drawing. Hunters may apply for multiple hunt dates on one postcard.
  - 4. Hunters successful in the drawing are required to comply with all hunting restrictions in #901.A of these regulations. All hunters must check-in and out at the check station. Maximum of four (4) hunters allowed per group per day. Hunters must park in designated parking areas, but are allowed to drop off decoys via existing four-wheel-drive only roads, as posted. Hunters must remain on existing roads as posted.
  - 5. During the light goose conservation order season, all hunters must check-in and out at check station.

**254. Tarryall Reservoir State Wildlife Area - Park County**

- a. Public access is prohibited from the dam, spillway and outlet structures.
- b. Operating a vessel in a manner that creates a whitewater wake is prohibited.

- c. OHV and snowmobiles use is prohibited.
- d. Discharge of firearms, pellet guns, or bows is prohibited in established campgrounds.
- e. Camping is allowed in designated campgrounds in designated number sites.
- f. Dogs are allowed but must be kept under control on a physical leash by the handler at all times, except as authorized in #900(C)(15).

**255. Taylor River State Wildlife Area - Gunnison County**

- a. Public access is prohibited from Taylor Dam to 325 yards downstream.
- b. Parking is allowed in designated parking areas only.
- c. Hunting and the discharge of firearms or bows is prohibited.

**256. Thurston Reservoir State Wildlife Area - Prowers County**

- a. Public access is prohibited from one (1) hour after sunset to one (1) hour before sunrise daily, except while fishing.
- b. Public access to the frozen surface of the lake is prohibited.
- c. Public access to the dams, inlets, and outlet structures is prohibited, except while fishing.
- d. Operating a vessel in a manner that creates a whitewater wake is prohibited from November 1 through the last day of the migratory waterfowl season.

**257. Tilman Bishop State Wildlife Area - Mesa County**

- a. Public access is prohibited from March 15 through July 15.
- b. Public access is allowed by foot only.
- c. Hunting is allowed with archery equipment and shotguns with shot-shells or by falconry only.
- d. Big game and waterfowl hunting is allowed by reservation only.
- e. Waterfowl hunting is allowed from designated blinds only.
- f. All hunters must comply with the Hunter Reservation System and reservations must be made through the Hunter Reservation System in accordance with #901.A of these regulations.
- g. Discharge of firearms or bows is prohibited, except while hunting.

**258. Timpas Creek State Wildlife Area - Otero County**

- a. Camping is allowed from August 15 through May 31.

**259. Tomahawk State Wildlife Area - Park County**

- a. Dog training and field trials are prohibited.

**260. Tomichi Creek State Wildlife Area - Gunnison County**

- a. Public access is prohibited from the end of the waterfowl season through June 30, except while fishing.
- b. Dog training and field trials are prohibited.

**261. Totten Reservoir State Wildlife Area - Montezuma County**

- a. Public access is prohibited along the north shore from March 1 through May 31, as posted
- b. Public access is prohibited from one (1) hour after sunset to one (1) hour before sunrise, except while fishing.
- c. Glass containers are prohibited.
- d. Hunting is prohibited in the inlet area as posted.
- e. Launching and use of vessels may be allowed as posted. Contact the Durango CPW office for current information. When allowed, operating a vessel in a manner that creates a whitewater wake is prohibited.
- f. Dogs are allowed but must be kept under control on a physical leash by the handler at all times, except as authorized in #900(C)(15).
- g. Public access to Totten Reservoir State Wildlife Area is exempt from requirements set forth in section #900(C)1 of these regulations.

**262. Trujillo Meadows State Wildlife Area - Conejos County**

- a. Launching and use of all vessels is allowed.
- b. Operating a vessel in a manner that creates a whitewater wake is prohibited.

**263. Turk's Pond State Wildlife Area - Baca County**

- a. Vessel use is prohibited, except for launching and use of vessels that are propelled by hand, or electric motor when used as an aid in fishing or hunting.
- b. All human activity is prohibited within a one-quarter (1/4) mile of the high water line around Turk's Pond including the administrative buildings, from the opening day of the regular duck season through the last day of the regular dark goose season as posted. Hunters are allowed inside the closure only to retrieve downed waterfowl. Hunters must leave firearms outside of the closure.

**264. Twenty Mile Pond State Wildlife Area (Fishing Easement) – Routt County**

- a. Public access is prohibited, except while fishing.
- b. Discharge of firearms or bows is prohibited.

**265. Twin Spruce Ponds State Wildlife Area- Montezuma County**

- a. Public access is prohibited from sunset to sunrise.
- b. Parking and public access is allowed from designated parking areas only.
- c. Glass containers are prohibited.
- d. Hunting and discharge of firearms or bows is prohibited.
- e. Vessel use is prohibited, except for hand-launched vessels that are propelled by hand.

**266. Two Buttes Reservoir State Wildlife Area - Baca and Prowers Counties**

- a. Vessel use is prohibited, except for hand-launched vessels that are propelled by hand, or electric motor in the ponds below the dam.
- b. Launching and use of all vessels is allowed on the reservoir.
- c. Water contact activities are allowed on the reservoir only.
- d. Camping is allowed in designated and established camping areas.
- e. Fires are allowed within an established containment structure in designated areas.

**267. Upper Red Cliff Ranch State Wildlife Area - Custer County**

- a. Public access is prohibited from December 1 through April 30, except for properly licensed hunters and one non-hunting companion.
- b. Parking and access is allowed from designated parking areas only.
- c. Hunting access is allowed by reservation only.
- d. All hunters must comply with the Hunter Reservation System and reservations must be made through the Hunter Reservation System in accordance with #901.A of these regulations.
- e. Discharge of firearms or bows is prohibited, except while hunting.
- f. Camping is allowed by licensed hunters during an established big game or turkey season plus three (3) days before and three (3) days after each season. Camping is prohibited within one hundred (100) feet of any stream.
- g. Dog training and field trials are prohibited.

**268. Verner State Wildlife Area (Fishing Lease) - Jackson County**

- a. Public access is prohibited, except while fishing.
- b. Discharge of firearms or bows is prohibited.

**269. Wahatoya State Wildlife Area - Huerfano County**

- a. Hunting and the discharge of firearms or bows is prohibited.
- b. Vessel use is prohibited, except for hand-launched vessels that are propelled by hand, wind or electric motor when used as an aid for fishing.
- c. Dogs are allowed but must be kept under control on a physical leash by the handler at all times.

**270. Walker State Wildlife Area - Mesa County**

- a. Public access is prohibited between sunset and sunrise except for on the paved portion of the Riverfront trail and while fishing.
- b. Overnight parking is prohibited.
- c. Discharge of firearms or bows is prohibited, except while bowfishing.
- d. Hunting is prohibited.
- e. Dogs are allowed on the paved portion of the Riverfront Trail, but must be kept under control on a physical leash by the handler at all times.

**271. Watson Lake State Wildlife Area - Larimer County**

- a. Public access is prohibited from one (1) hour after sunset to one (1) hour before sunrise, except while fishing.
- b. Public access onto the fish passage structure located on the northeast side of Watson Lake State Wildlife Area is prohibited.
- c. Public access is prohibited to the northwest side as posted to prevent access to the water outtake and fish disposal area.
- d. Fishing from the walls of the fish passage or fishing in the fish passage is prohibited.
- e. The use or possession of live minnows is prohibited.
- f. Vehicle parking is prohibited on the South Dam.
- g. Launching and take out of vessels is prohibited.
- h. Hunting and discharge of firearms or bows is prohibited.
- i. Ice fishing is prohibited.
- j. Ice skating is prohibited.
- k. Dogs are allowed but must be kept under control on a physical leash by the handler at all times, except as authorized in #900(C)(15).

**272. Waunita Watchable Wildlife Area - Gunnison County**

- a. Public access is allowed from April 1 through April 30 annually only, except during the second full week (Sunday through Sunday) of the month when public access is prohibited. Public access is prohibited at all other times.
- b. Discharge of firearms or bows is prohibited.
- c. Dogs are prohibited.

**273. Webster State Wildlife Area - Weld County**

- a. Public access is prohibited, except from September 1 through the last day of spring turkey season.
- b. Public access is allowed only for licensed hunters or members of a hunting party, and only on Saturdays, Sundays, Wednesdays and state and federal holidays.
- c. Public access is prohibited from one (1) hour after sunset to 4:00 a.m.
- d. Hunters may only access the property by parking in a designated, numbered parking spot inside the parking lot. Parking along the access road or Weld Co Rd 394 is prohibited.
- e. Discharge of firearms or bows is prohibited, except while hunting.
- f. Hunting with centerfire rifles and muzzleloaders is prohibited.
- g. Hunting is prohibited in the inflow or outflow canals.
- h. Horse use is prohibited.

**274. Wellington State Wildlife Area - Larimer and Weld Counties**

- a. Public access is prohibited on the Wellington and Schware Units from March 15 through July 15.
- b. Public access is prohibited on the Wellington Unit from the first day of the regular waterfowl season to the first day of the pheasant season, except on Saturday, Sundays, Wednesday and state and federal holidays.
- c. Hunting with centerfire rifles is prohibited.
- d. Target practice is prohibited, except when authorized by the area wildlife manager.
- e. Vessel use is prohibited, except for launching and use of vessels that are propelled by hand and used for waterfowl hunting, dog training or field trials.
- f. Field trials may be authorized on the Wellington and Schware units during February, March 1 through 14, and August only. Field trials may be authorized on the Cobb Lake Unit year-round.
- g. Game birds listed in #009(B) of these regulations may be released on the Cobb Lake Unit by the Division or its agent for educational or training purposes without seasonal or numerical restrictions.

- h. Domestic birds, feral birds, or privately-owned game birds may be released year-round for dog training on the Cobb Lake Unit by permit only, in accordance with the provisions of this chapter and other applicable regulations, including, but not limited to, #007, #008, #009, #801 and #804 of these regulations. All such birds taken during training activities shall be removed from the State Wildlife Area by the dog training permittee and all privately-owned game birds shall be prepared for human consumption.
- i. Horse use is prohibited, except at the Cobb Lake Unit, where horses may be used during field trials.
- j. The Division is authorized to implement a dog training reservation system should overcrowding become an issue on the State Wildlife Area.

**275. West Lake State Wildlife Area - Larimer County**

- a. Vessel use is prohibited, except for launching and use of vessels that are propelled by hand, wind or electric motor.
- b. Public access to West Lake State Wildlife Area is exempt from requirements set forth in section #900(C)1 of these regulations.

**276. West Rifle Creek State Wildlife Area - Garfield County**

- a. Public access is prohibited on the designated shooting range between sunset and sunrise.
- b. Discharge of firearms or bows is prohibited, except while hunting or on the designated shooting range.
- c. Camping is allowed by licensed hunters during an established big game season plus three (3) days before and three (3) days after each season.
- d. Fires are allowed within a containment structure while camping.

**277. Whitehorse State Wildlife Area - Adams County**

- a. Public access is limited to youth and mentors who have received certification to use the property as participants in the youth hunting program.
- b. Public access is limited to dates specified by the program.
- c. Parking and access is allowed from designated parking areas only.
- d. Reservations are available to authorized participants for waterfowl hunting. Reservations must be made in accordance with #901.A of these regulations. Hunters with reservations may only hunt the area specified on the reservation, except when hunting areas which are unreserved and unoccupied.
- e. Waterfowl hunters must check-in and check-out at the designated check station and the reservation holder must be present while hunting.

**278. Williams Creek Reservoir State Wildlife Area - Hinsdale County**

- a. Launching and use of all vessels is allowed.
- b. Operating a vessel in a manner that creates a whitewater wake is prohibited.
- c. Discharge of firearms or bows is prohibited, except while hunting.
- d. Snowmobiles are allowed only as an aid in ice fishing.
- e. Dogs are allowed but must be kept under control on a physical leash by the handler at all times, except as authorized in #900(C)(15).

**279. Willow Creek State Wildlife Area (Fishing and Hunting Lease) - Yuma County**

- a. Public access is prohibited from June 1 through August 31.
- b. Public access is prohibited from 9:00 p.m. – 4:00 a.m.
- c. Dog training is prohibited.
- d. Horse use is prohibited.

**280. Willow Creek Reservoir State Wildlife Area (Fishing/Hunting Lease) - Grand County**

- a. Public access is prohibited, except while fishing, small game, and waterfowl hunting.
- b. Public access is allowed only through designated access points as posted.
- c. Hunting with centerfire rifles prohibited.

**281. Wind in the Willows State Wildlife Area - Hinsdale County**

- a. Public access to the Easement Area is allowed from a single point located at the southerly end of the property, just north of the bridge on Hinsdale Co Rd 33, near the intersection of Hinsdale Co Rd 33 and Hinsdale Co Rd 30. Public access to the Easement Area from any other portion of the property is prohibited.
- b. Public access is prohibited, except while fly fishing only.
- c. Public access is prohibited from one (1) hour after sunset to one (1) hour before sunrise.
- d. Public access is allowed by foot only.
- e. Fishing access is allowed only on the Lake Fork of the Gunnison River, including twenty (20) feet on either side of the riverbank.
- f. Dogs are prohibited.

**282. Windy Gap Watchable Wildlife Area - Grand County**

- a. Public access is prohibited outside of the viewing area.
- b. Public access is prohibited from sunset to sunrise.
- c. Discharge of firearms or bows is prohibited.

- d. Hunting is prohibited.
- e. Fishing is prohibited.
- f. Dogs are allowed but must be kept under control on a physical leash by the handler at all times.
- g. Public access to Windy Gap Watchable Wildlife Area is exempt from requirements set forth in section #900(C)1 of these regulations.

**283. Woods Lake State Wildlife Area - San Miguel County**

- a. Vessel use is prohibited, except for launching and use of vessels that are propelled by hand, wind or electric motor.
- b. Dogs are allowed but must be kept under control on a physical leash by the handler at all times, except as authorized in #900(C)(15).

**284. Yampa River State Wildlife Area - Routt County**

- a. Discharge of firearms or bows is prohibited, except while hunting.
- b. Launch or take out of vessels, except those being actively used for fishing, hunting or wildlife viewing is prohibited.

**285. Yarmony Ranch State Wildlife Area (Hunting and Fishing Easement) - Jackson County**

- a. Public access is prohibited, except while hunting or fishing.
- b. Hunting is allowed for elk, moose and pronghorn with a limited public access permit only.
- c. Limited public access permits may be obtained by contacting the CPW Steamboat Springs Service Center at 970-870-3333.
- d. To obtain a limited public access permit, hunters must already possess a big game license for one of the specific hunt codes permitted on the property.
- e. Limited access permits will be valid starting the 1st day of the season of the license.
- f. Hunters may only access the property during the dates specified on their limited public access permit and may be accompanied by up to two (2) people who are not hunting.
- g. Public access by hunters with a limited public access permit is prohibited prior to two (2) hours before sunrise and after one (1) hour following sunset, except that when an animal has been harvested, the successful hunter and their non-hunter companion shall be allowed to remain as long as necessary to remove it.
- h. Fishing is prohibited during established big game hunting seasons.
- i. Parking and public access is allowed from designated parking areas only.
- j. Public access is allowed by foot and horseback only.
- k. Discharge of firearms or bows is prohibited in the designated safety zones, or as posted.

- I. Discharge of firearms or bows is prohibited, except while hunting.
- m. Building blinds is prohibited.

**APPENDIX B**

**2. State Trust Lands governed by regulation #902**

Properties leased from the State Land Board (state trust lands) governed by general provisions contained in regulation #902 include those listed in the following table and any new properties acquired during the year for which property specific regulations have not been adopted:

<b>Property Name</b>	<b>County</b>
Adelaide	Fremont
Agate Mountain	Park
Agua Ramon	Rio Grande
Alamosa Canyon	Conejos
Alkali Arroyo	Otero
Alta	Conejos
American Gulch	Rio Grande
Antelope Flats	Morgan
Antelope Tank	Las Animas
Arrowhead	Larimer
Aspen Ridge	Chaffee
Aubury Creek	Baca
Badger Basin	Park
Badger Flats	Park
Badito	Huerfano
Bear Creek	Huerfano
Beaver Brook	Clear Creek
Beecher Island	Yuma
Ben Morgan Canyon	Moffat
Black Wolf Creek	Yuma
Bloom Hills	Otero
Bonny Creek	Yuma
Box Elder	Moffat
Boxelder North	Moffat
Brammer	Morgan
Briggsdale	Weld
Brush Hollow	Fremont
Buffalo Gulch	Park
Bull Pasture	Otero
Burns Canyon	Chaffee
Bustos Flat	Huerfano
Carrica	Otero
Chiquito Peak	Conejos
Cimarron River	Baca

<b>Property Name</b>	<b>County</b>
Citadel	Moffat
Copper Mountain	Grand
Crooked Arroyo	Otero
Cross Mountain	Moffat
Crow Valley	Weld
David Canyon	Otero
Dead Horse Creek	San Miguel
Dearfield	Weld
Delmonica Gulch	Lake
Disappointment Creek	Dolores
Disappointment Valley	San Miguel
Dixie Bluffs	Otero
Dry Creek Basin	San Miguel
Dry Creek North	Larimer
Eagle Canyon	Larimer
East Alamosa	Alamosa
East Bend	Conejos
East Carrizo Creek	Las Animas
East Timpas	Otero
Eastman Basin	Weld
Ecklund	Yuma
Edler	Baca
Eleven Mile	Park
Elk Springs #1	Moffat
Flagler	Kit Carson
Flying A	Pueblo
Foster Gulch	Custer
Gallegos	Conejos
Geary Creek	Weld
Gerrard	Rio Grande
Guillermo Ranch	Huerfano
Haight	Otero
Hamilton Mesa	San Miguel
Hartsel	Park
Hartsel South	Park
Hay Gulch Overlook	Yuma
Higbee Canyon	Otero
Howard Creek	Weld
Hungerford	Pueblo
Iles Grove	Moffat
Iron Springs	Otero
Jack Canyon	Otero
Jacks Creek	Saguache
Jeffway Gulch	Moffat
Jimmy Creek	Larimer
Johnson Gulch	Custer

<b>Property Name</b>	<b>County</b>
Jubb Creek	Moffat
Juniper Hot Springs	Moffat
Keller	Bent
Keota	Weld
Kerber Creek	Saguache
Kinney Lake	Lincoln
Kirkwell	Baca
Klondike Basin	San Miguel
La Junta	Otero
Las Mesitas	Conejos
Laughlin Gulch	Saguache
Lazy D	Weld
Little Muddy	Adams
Little Snake	Moffat
Lone Rock	Baca
Maitland	Huerfano
Manhattan Creek	Larimer
McKenna Peak	San Miguel
Middle Creek	Saguache
Miner's Draw	Moffat
Mirage	Saguache
Moore Draw	Baca
Morgan Gulch	Moffat
North Devils Canyon	Otero
North Pawnee Creek	Weld
Oil Well Flats	Fremont
Old Man's Gulch	Eagle
Old Woman Creek	Saguache
Orchard	Weld
Ortiz	Conejos
Packers Gap	Otero
Pawnee Coal Creek	Weld
Pawnee Valley	Logan
Pine Arroyo	Huerfano
Pinon Ridge	Moffat
Point of Rocks	Weld
Poison Spyder	San Miguel
Poitrey Canyon	Las Animas
Poitrey Creek	Las Animas
Poncha Pass	Chaffee
Punche Valley	Conejos
Queens	Kiowa
Railroad Gulch	Chaffee
Rattlesnake	Huerfano
<del>Red Mountain</del>	<del>Grand</del>
Red Rock	Otero

<b>Property Name</b>	<b>County</b>
Robinson Creek	Weld
Rock Creek	Saugache
Rock Fall	Otero
Romeo	Conejos
Rosener	Morgan
Round Top	Otero
Russell Creek	Saguache
Rye Slough	Park
Saddle Mountain	Park
San Antonito	Conejos
Sand Arroyo	Baca
Sand Canyon	Baca
Sand Creek Central	Chaffee
Sand Creek South	Baca
Savory East	Las Animas
Settlement	Kit Carson
Shelf Road	Teller
Simmons	Yuma
Simsberry Draw	Moffat
Sixteen Ditch	Jackson
Skull Creek	Moffat
Sleeping Giant	Routt
Slide Mountain	Grand
Snyder Prairie	Washington
South Duffy Mountain	Moffat
South Fork Republican	Kit Carson, Yuma
South Fork Spring Canyon	Yuma
South Gardner	Huerfano
South Mountain	Dolores
South Pawnee Creek	Weld
South Pinon Hills	Conejos
South Roggen	Weld
Spinney	Park
Spring Creek Basin	San Miguel
Spring Gulch	Saguache
Spring Valley	Kit Carson
Sterling Prairie	Logan
Steven's Gulch	Larimer
Stone Corral	Weld
Sugar Loaf	Conejos
Sultan Creek	San Juan
Sunny Moon	Baca
Taos Valley	Conejos
Tecolote Creek	Las Animas
Temple Canyon	Moffat
Texas Creek #2	Fremont

<b>Property Name</b>	<b>County</b>
The Hogback	Huerfano
The Poso	Conejos
Thornburg Draw	Moffat
Three Mile Mountain	Park
Timberlake	Otero
Tinaja Canyon	Huerfano
Tobe Creek	Las Animas
Treasurevault Mountain	Park
Treetop	Bent
Triangle	Moffat
Troublesome Valley Ranch	Grand
Trujillo Canyon	Conejos
Tunnel Drive	Fremont
Turkey Ridge	Pueblo, Huerfano
Two Buttes	Prowers
Twomile Creek	Weld
Uteyville	Baca
Villa Grove	Saguache
Weldon Valley	Morgan
West Lime Creek	San Juan
Whiskey Creek	Eagle
Whiterock	Otero, Pueblo
Wild Horse	Weld

**Basis and Purpose:**

**Miller Ranch State Wildlife Area**

Cleanup to update the Gunnison Service Center address.

**Red Mountain State Trust Land**

Red Mountain State Trust Land is about 623 acres in Grand County, bordering the City of Kremmling. Colorado Parks and Wildlife has in the past held the recreation lease from September 1 through the end of February for very minimal hunting opportunities. In addition, there is confusion over the legal use of the STL by the public during periods of lease by CPW and when it is not leased by CPW. The property has been used by people in town as a park to walk/run their dogs, ride bikes, and/or just drive around. However, those uses are not the priority of the State Trust Lands Hunting and Fishing Access Program, which is to increase seasonal public hunting and fishing opportunities. There is no fishing opportunities, hunting opportunity is limited at best on this property. Also, enforcement efforts here are causing a strain on the relationships with the people of Kremmling who want to acquire the property and change the designated use. For these reasons the property will no longer be enrolled in the State Trust Lands Hunting and Fishing Access Program and the lease will end.

The statements of basis and purpose for these regulations can be obtained from the Colorado Division of Parks and Wildlife, Office of the Regulations Manager by emailing [dnr\\_cpw\\_planning@state.co.us](mailto:dnr_cpw_planning@state.co.us) or by visiting the Division of Parks and Wildlife headquarters at 6060 Broadway, Denver, CO, 80216.

**The statutory authority for these regulations includes, but is not limited to:**

- § 24-4-103, C.R.S.
- §§ 33-1-101 to 33-6-209, C.R.S., particularly §§ 33-1-105, -106, -107, and 33-4-102, C.R.S.
- § 33-9-102, C.R.S.

**EFFECTIVE DATE - THESE REGULATIONS SHALL BECOME EFFECTIVE SEPTEMBER 1, 2025 AND SHALL REMAIN IN FULL FORCE AND EFFECT UNTIL REPEALED, AMENDED OR SUPERSEDED.**

**APPROVED AND ADOPTED BY THE PARKS AND WILDLIFE COMMISSION OF THE STATE OF COLORADO THIS 17TH DAY OF JULY 2025.**

**APPROVED:**  
Richard Reading  
Chair

**ATTEST:**  
Eden Vardy  
Secretary

## ISSUES SUBMITTAL FORM

Date: July 3, 2025

<b>ISSUE:</b>	Should Red Mountain STL in Grand Co. be removed from the STL Hunting and Fishing Access Program?
---------------	--

**DISCUSSION (FACTS AND FIGURES, EXPLANATION OF ISSUE):**

Red Mountain State Trust Land is about 623 acres in Grand County, bordering the Town of Kremmling. Colorado Parks and Wildlife has the hunting recreation lease from September 1 through the end of February. Hunting opportunities are limited to rabbit, coyote, pronghorn, deer, and elk. Realistically, big game hunting opportunities are rare, as big game primarily utilize the area for winter range after established hunting seasons. There is no livestock leasee. Bureau of Land Management borders the east and north side of this property and access to the BLM is not dependent on the STL access. The town of Kremmling borders to the south, and another development borders to the west.

The Town of Kremmling asked for a meeting with the SLB and CPW to discuss the possibility of taking over the recreation lease. That meeting occurred in late March 2025. The town revealed they would like to lease the property, eventually making it a park. The town owns a neighboring property on the southwest corner of the STL and is seeking an additional access point to that property.

There are plans to build apartments on the property south of the STL next to Hwy 40, as Kremmling is a bedroom community for people who work in Summit County. Current residential expansion in other areas of town is limited and selling out.

There is often confusion among the public over the legal use of the STL (limited to only hunting access) when CPW leases the property and when we do not lease it. It is often used by people from the town as a park to walk/run their dogs, ride bikes, and/or just drive around. There is a private RV Park adjacent to the STL property and a storage area for OHVs (which actually may be on STL). Hence, there is significant illegal use by the public year-round, including the recreational use of OHVs on the property. This illegal use occurs during the hunting seasons, affecting hunting opportunities, and continues during the winter. The surrounding BLM property is “non-motorized” during the winter months.

The priority of the State Trust Lands Hunting and Fishing Access Program is to increase seasonal public hunting and fishing opportunities. There are no fishing opportunities, and hunting opportunities are limited at best. The restrictions placed on STL properties enrolled in the STL Hunting Access Program (type of activity and timing restrictions) are regularly violated. Enforcement efforts here are straining the relationships with the people of Kremmling, who want to acquire the property and change the designated use.

Based on discussions with State Land Board Staff, SLB supports leasing the property to the town of Kremmling. CPW is facing an uphill battle with the public on us enforcing the use regulations, and support is growing for the town to assume the recreation lease. The return on CPW dollars spent for limited hunting access is a concern, particularly when factoring in future development next to the property that diminishes the value to the intended use

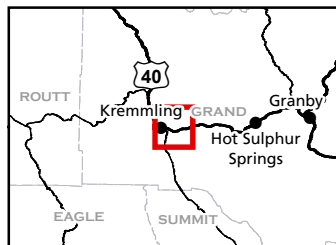
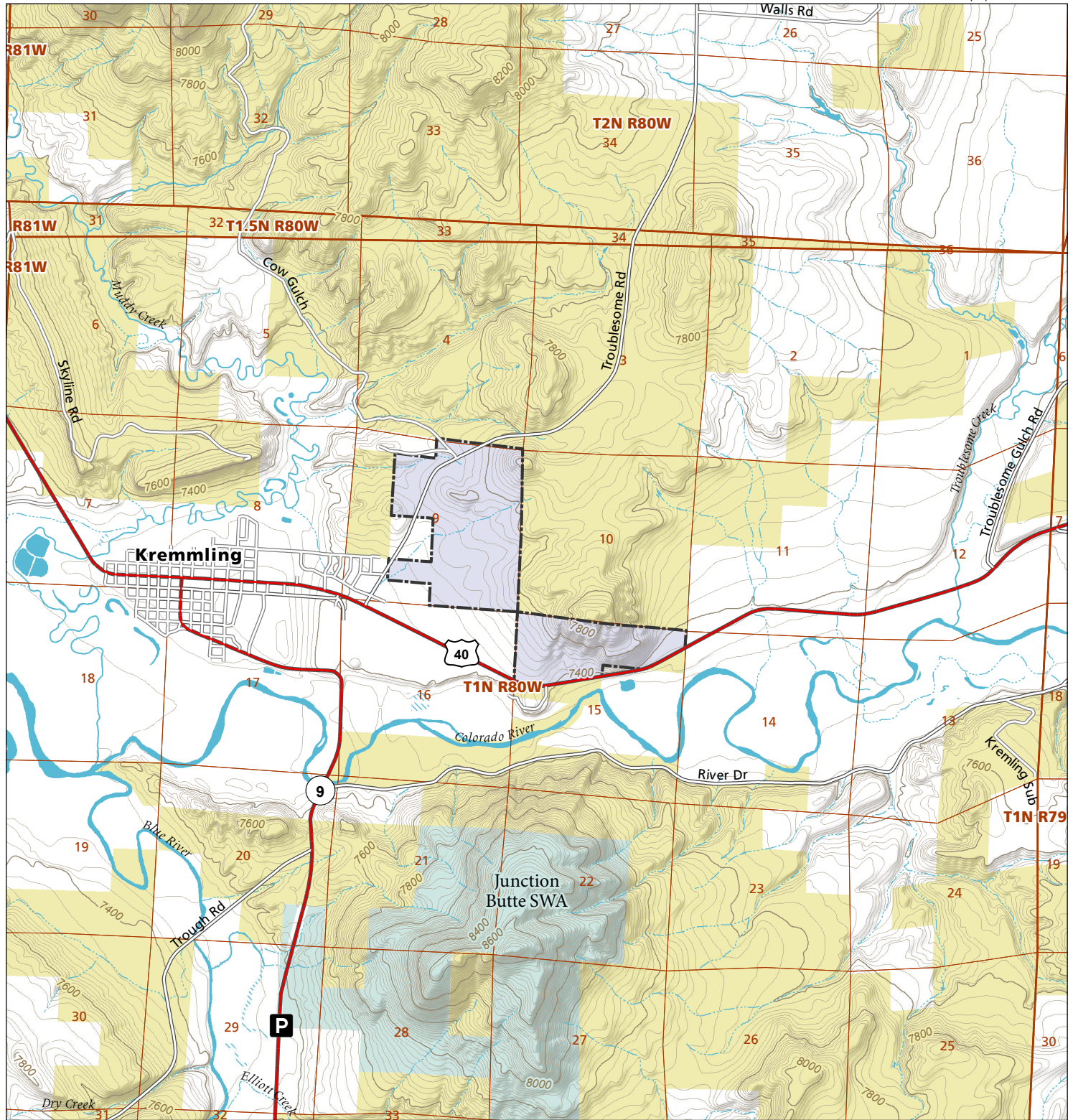
within the Hunting Access Program, along with safety concerns as land around the STL continues to be developed.	
<b>STATE LAW REQUIRES CPW TO SOLICIT INPUT FROM STAKEHOLDERS THAT MAY BE AFFECTED POSITIVELY OR NEGATIVELY BY THE PROPOSED RULES. THE FOLLOWING STAKEHOLDERS HAVE BEEN ADVISED OF AND INVITED TO PROVIDE INPUT ON THE REGULATORY CHANGES PROPOSED IN THIS ISSUE PAPER:</b>	
<b>*IT IS ASSUMED THAT ALL NECESSARY INTERNAL PARTIES HAVE BEEN NOTIFIED*.</b>	
<b>[List stakeholder groups and briefly summarize comments received]</b>	
<p>The Town of Kremmling wants the recreation lease for public use other than hunting; Citizens of Kremmling support the town taking over the lease. It is very rare to see hunters utilizing the property, indicating that the Red Mountain STL offers little opportunity to find and hunt game. Hunters hunt other public lands where game is more likely to be found.</p> <p>SLB staff support removing this STL from the STL Hunting and Fishing Access Program and supports the Town of Kremmling taking over the Recreation Lease.</p>	
<b>ALTERNATIVES: (POSSIBLE OUTCOMES or POSSIBLE REGULATIONS):</b>	
<p>1. <b>*Preferred Alternative*:</b></p> <p style="text-align: center;"><b>Remove Red Mountain STL from STL Hunting and Fishing Access Program.</b></p> <p>2. Status quo</p>	
<b>Issue Raised by:</b>	<b>Area 9 Staff, Dan Coil –AAWM, Jeromy Huntington-AWM</b>
<b>Author of the issue paper (if different than person raising the issue):</b>	
<b>CC:</b>	<b>Travis Black, Jacob Bray, Zach Spezze, Abe Medina - SLB</b>
<b>APPROVED FOR FURTHER CONSIDERATION BY:</b>	
<b>REQUIRES NEW SPACE IN THE BROCHURE?</b>	<b>NO</b>
<b>ARE ADEQUATE STAFF AND FUNDING RESOURCES AVAILABLE TO IMPLEMENT?</b>	<b>YES</b>
<b>REGION, BRANCH, OR SECTION LEADING IMPLEMENTATION</b>	<b>Area 9 and STL HFAP</b>
<b>RECOMMENDED FOR CONSENT AGENDA?</b>	<b>YES</b>






# Red Mountain

## STL Hunting and Fishing Access Program

Please see the current Colorado State Recreation Lands brochure for listing of land use regulations and access points for this property and other SLB parcels open for wildlife related recreation. Also refer to the CPW Fishing and Hunting information brochure for current hunting and fishing regulations.

Map Updated: 8/14/2023



-  STL Boundary
-  SWA
-  Parking
-  BLM
-  No Public Access

