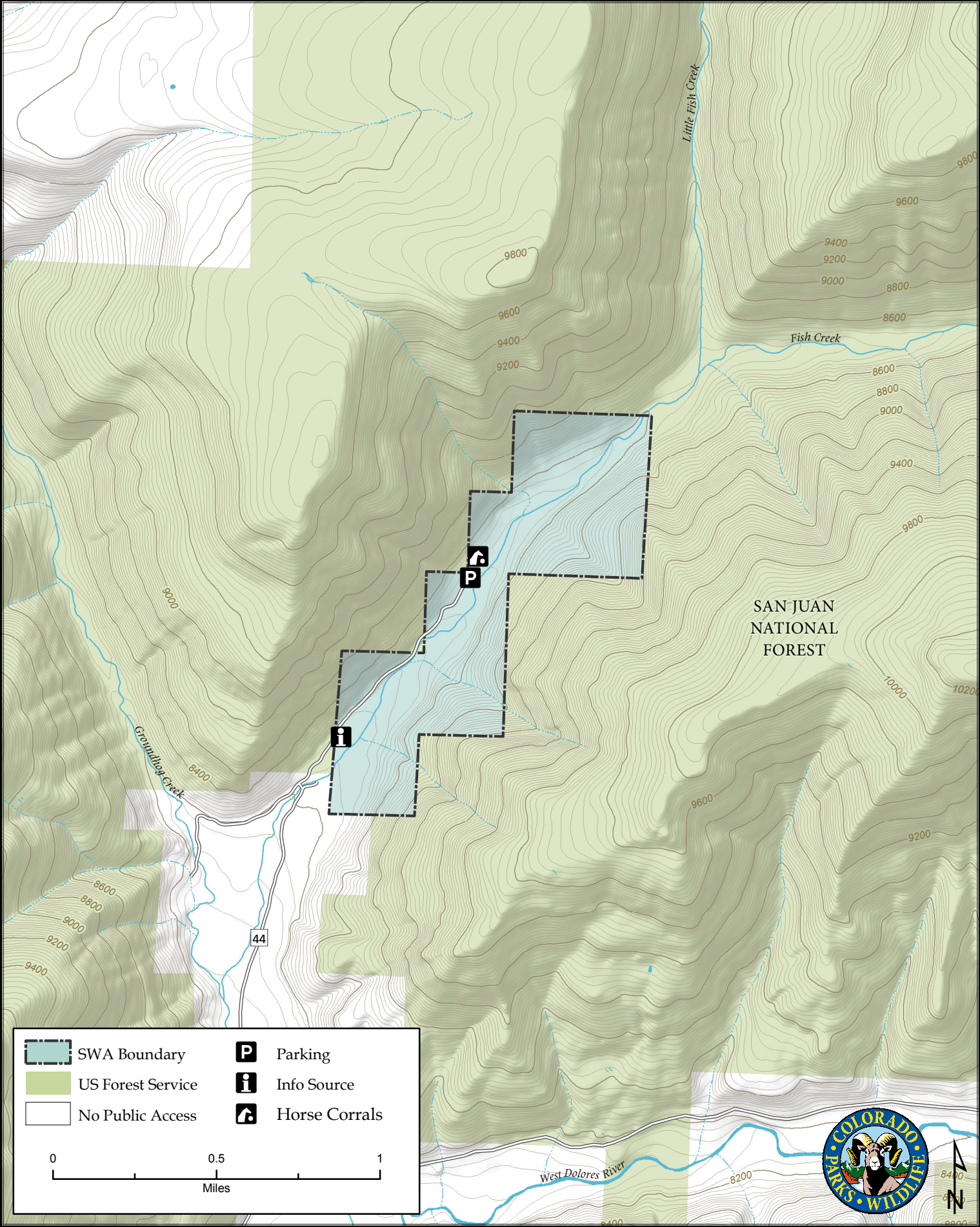
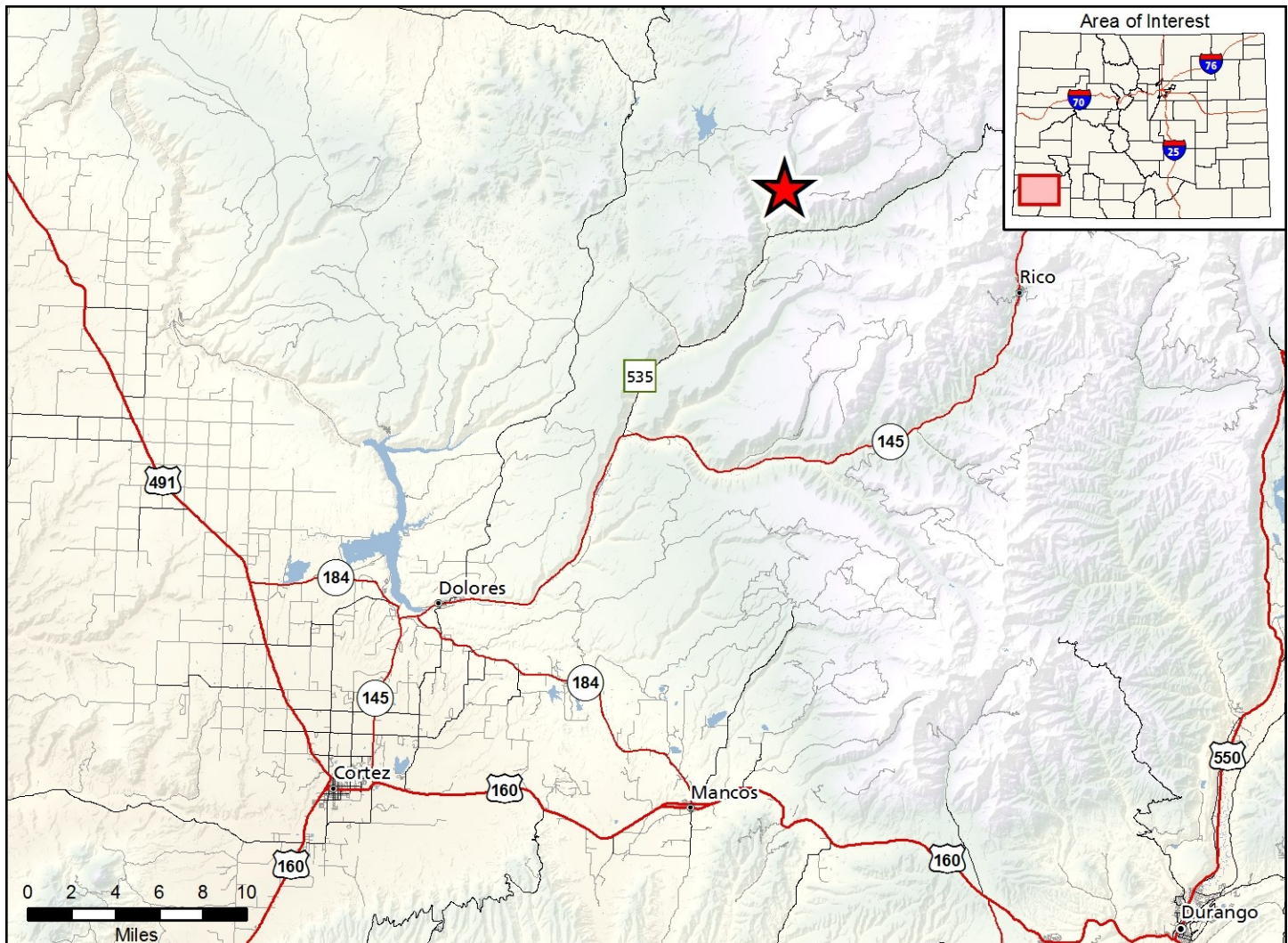


# Fish Creek State Wildlife Area

Map Updated: 5/15/2019







### Fish Creek SWA - Dolores County

From Dolores, go 12 miles north on Highway 145 to Forest Service Road 535, then 12 miles north (left) to the access road on the left. Cross the cattle guard and drive past the private residences 1 1/2 miles to the parking area.

#### Wildlife Area Offers:

Hunting: Deer, elk, rabbit, dusky (blue) grouse, snowshoe hare

Fishing: Coldwater stream

Recreation: Hiking, Wildlife Viewing

#### Regulations:

In addition to or in place of those restrictions listed in regulation #900 the below listed provisions or restrictions apply (see Ch. 9, <http://cpw.state.co.us/aboutus/Pages/Regulations.aspx>).

- Public access is prohibited from December 1 through June 30.
- Camping is allowed in designated parking areas by licensed hunters during an established big game season plus three (3) days before and three (3) days after each season.

#### More Information:

CPW Office (Durango): (970) 247-0855

CPW Website: <http://cpw.state.co.us/>