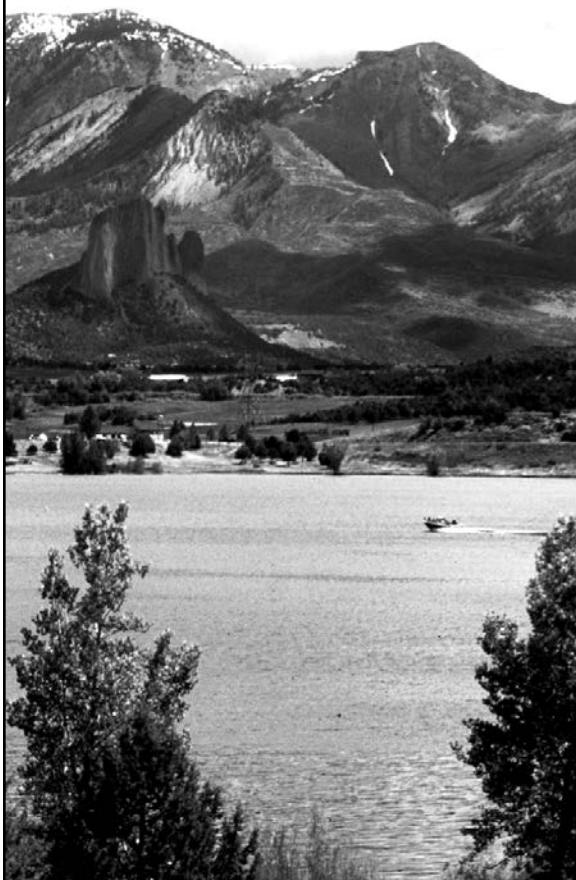


COLORADO PARKS & WILDLIFE

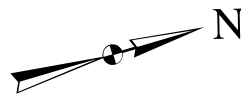
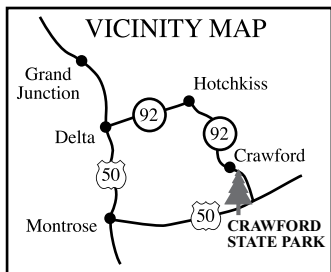
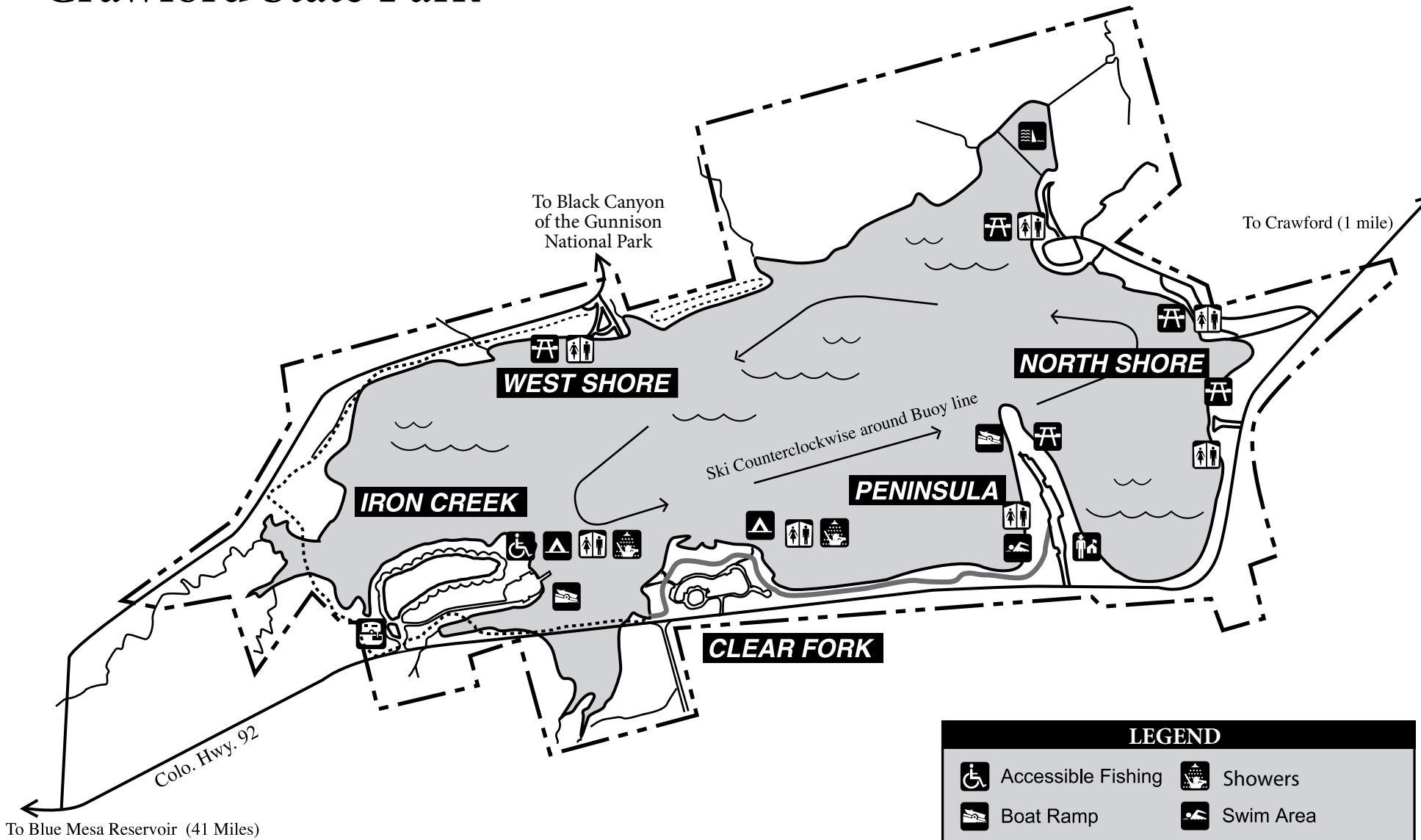
Crawford State Park

ENJOY YOUR STATE PARKS



cpw.state.co.us

Crawford State Park



1,000 FT SCALE

LEGEND			
	Accessible Fishing		Showers
	Boat Ramp		Swim Area
	Dam		Camping
	Dump Station		Water Skiing
	Park Office		Water-Skiing Area
	Picnic Area		Accessible Trail
	Restrooms		Nature Trail
			Park Boundary

Crawford State Park offers its visitors camping, fishing, watersports, hunting and numerous other leisure time activities in scenic mountainous terrain. The area around the park is almost exclusively cattle country. As the center of the cattle industry in the North Fork area, the nearby town of Crawford sees hundreds of cows herded down main street on their way either to market or mountain pasture. Ranches and farms still surround the park, drawing water from the same reservoir that affords visitors so many recreational opportunities year-round. The park's 6,600 ft. elevation guarantees visitors a mild climate at any season.

The famous and spectacular Black Canyon of the Gunnison is only 12 miles from the park. Nearer landmarks visible from Crawford State Park are Needle Rock, Castle Rock and Saddle Mountain.

Within the boundaries of Crawford State Park are 337 land acres and the 400-acre reservoir, which was built in 1963 by the US Bureau of Reclamation. Colorado Parks & Wildlife has administered the area since 1965.



Regulations

Crawford State Park is maintained for your use and enjoyment. In the interests of safety and for preservation of the park, we ask that you:

1. Place trash in the receptacles provided.
2. Keep your vehicle on designated roads and parking lots.
3. Pets must be kept on a leash of no more than six feet long at all times.
4. Use the fire grills or rings provided and be sure your fire is out completely before you leave it.
5. Report any problems to a Park Ranger.

Passes and Permits

All vehicles entering the park are required to display a current Colorado State Parks Pass on the auto windshield or Keep Colorado Wild vehicle registration. A daily pass is valid from the day purchased until noon the following day. An annual pass is valid at any Colorado State Park. For annual pass holders who own another car, a multiple pass is available for an additional fee. Passes are available at main park entrances and self-service dispensers.

Colorado residents 64 or older qualify for a special Aspen Leaf annual pass, available at a discounted rate. These allow admission to all state parks every day and reduced-fee camping on weekdays. The regular fee is charged on weekends and holidays.

Colorado disabled veterans displaying Colorado Disabled Veteran (DV) license plates are admitted free without a pass, however, camping fees still apply.

In addition to a parks pass, campers are required to make a reservation prior to occupying a campsite.

Camping

Two separate campgrounds, named Iron Creek and Clear Fork can accommodate tents, trailers, and campers; and each has comfortable shower facilities. Iron Creek Campground has electrical and water hookups at each individual campsite. Clear Fork campground has fifteen (15) full hook-up RV sites and five (5) tent sites

Campers must make a reservation before occupying a campsite as well as a parks pass. Daily park passes are available at the park entrances. Please camp only in designated campsites. The campgrounds are patrolled for your safety and to ensure quiet after 10 p.m.



For camping reservations please call 1 (800) 244-5613 or visit cpwshop.com

Trails

You can hike from the visitor center to the west shore day use area for a total of 3.5 miles. There are six starting points around the park to make shorter hikes along this trail.

Picnicking

Several picnic sites are located throughout the park, each with a grill or ring for fires.



Boating & Water Recreation

Boaters at Crawford State Park are subject to Colorado boating statutes and regulations, which are available in pamphlet form at the Park Office.

Water-skiing season at Crawford usually begins in mid-May and ends in mid-August. Scuba diving is permitted in any safe area. A diver's flag is required.

Swimming is permitted in designated areas.



Fishing

Crawford State Park is well known as a quality rainbow trout, perch and crappie fishery. Largemouth bass and catfish are stocked in the reservoir. Fishing is permitted anywhere on the reservoir. Use or possession of live minnows or fish for bait is prohibited.



Accessible Features

Crawford State Park offers a multitude of accessible features such as eight accessible campsites, accessible camper services buildings with accessible showers. There are also accessible fishing sites and accessible trails.



Wildlife

Beavers, chipmunks, rabbits, skunks and mule deer live in or around the park and may frequently be seen at shoreline late in the evening.

A variety of waterfowl, from western grebes to graceful Canada geese, may be seen at Crawford State Park, either stopping off during migrations or nesting.



Winter Recreation

Cold weather enthusiasts come to Crawford State Park for ice fishing and cross-country skiing.



Dump Station

A holding tank dump station is located in Iron Creek Campground. Please use this facility. It is illegal to dump waste and sewage anywhere else.



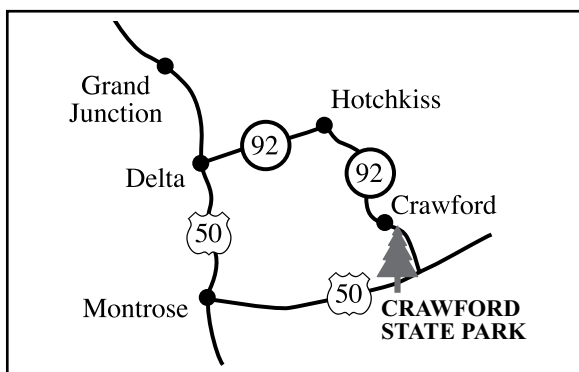
Community Facilities

All commercial and religious facilities are available in the town of Crawford, one mile north of the park. Medical facilities are found in Paonia, Hotchkiss and Delta.



► LOCATION

From Delta: take Colorado Highway 92 east to Hotchkiss. Stay right on 92 where it intersects Colorado Highway 133, and drive 10 miles to Crawford. The park is one mile south of town.



Crawford State Park

PO Box 147, 40468 Hwy. 92, Crawford, CO 81415

(970) 921-5721 • crawford.park@state.co.us

cpw.state.co.us

@COPARKSWILDLIFE



This program receives Federal financial assistance from the U.S. Fish and Wildlife Service. Under Title VI of the 1964 Civil Rights Act, Section 504 of the Rehabilitation Act of 1973, Title II of the Americans with Disabilities Act of 1990, the Age Discrimination Act of 1975, and Title IX of the Education Amendments of 1972, the U.S. Department of the Interior prohibits discrimination on the basis of race, color, national origin, age, sex, or disability. If you believe that you have been discriminated against in any program, activity, or facility, or if you need more information, please write to: Office of Diversity, Inclusion and Civil Rights, U.S. Department of the Interior 1849 C Street, NW Washington, D.C. 20240



Funded in part by Great Outdoors Colorado through Colorado Lottery proceeds.