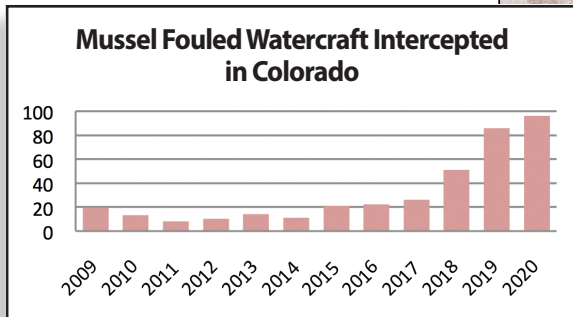
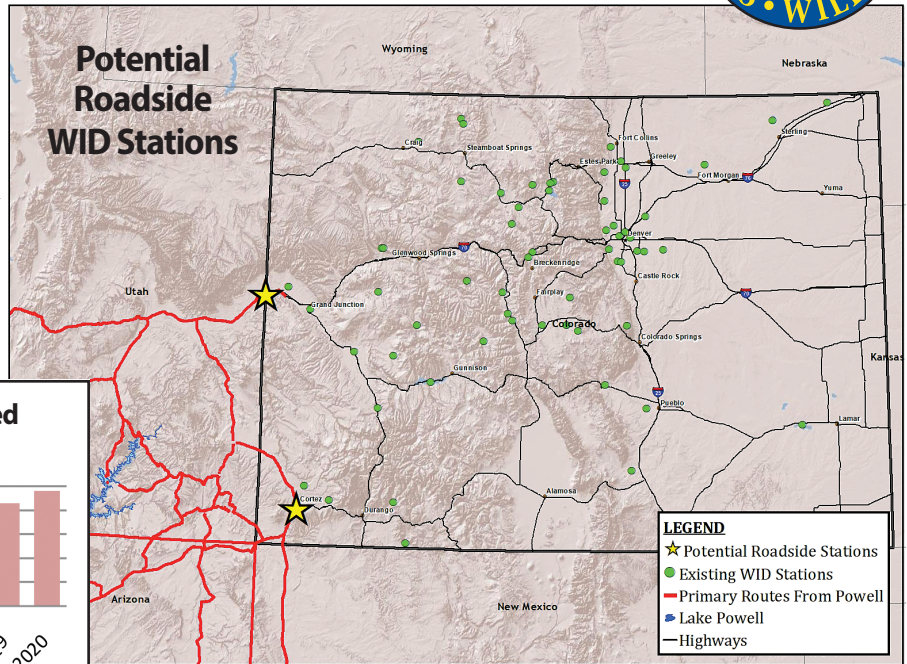


# Roadside Watercraft Inspection & Decontamination Stations



## ZEBRA AND QUAGGA MUSSELS

Colorado Parks & Wildlife’s watercraft inspection & decontamination (WID) program is experiencing a significant increase in the amount of mussel fouled watercraft being intercepted at lakes and reservoirs across the state. Thus far in 2020, **100** watercraft have been intercepted at Colorado’s network of WID stations. This increase strains resources and undoubtedly increases the risk of introduction at waters across the state.



## Targeting The Highest Risk Pathways For Introduction

While these mussel fouled watercraft are coming in from all directions, the majority of these vessels are originating from Lake Powell (72%). Representatives from the Utah Division of Wildlife Resources have stated that 65%–70% of the boats leaving Lake Powell have mussels on or in them when inspected leaving Lake Powell.

Lake Powell is a popular recreational destination for Colorado residents. There are over 500 Colorado registered watercraft



being inspected leaving Lake Powell on a weekly basis. Despite the greatest efforts at that location, many boats are still leaving Powell with mussels on board.

The burden of inspecting & decontaminating all of these boats at existing WID stations is challenging and resource intensive. Developing roadside WID stations at Colorado’s borders to supplement existing stations, may help to alleviate some of the pressure and provide some assurance that the vast majority of vessels coming in to Colorado are not transporting invasive mussels into the state.

## Legal Authority

Current authority only exists for performing inspections at the water body access point. Legal authority would have to be amended to allow for qualified peace officers as well as civilian inspectors and decontaminators to operate on roadsides. Additionally, mandatory requirements for watercraft to stop at these stations for inspection must be enacted to achieve the highest possible compliance.