

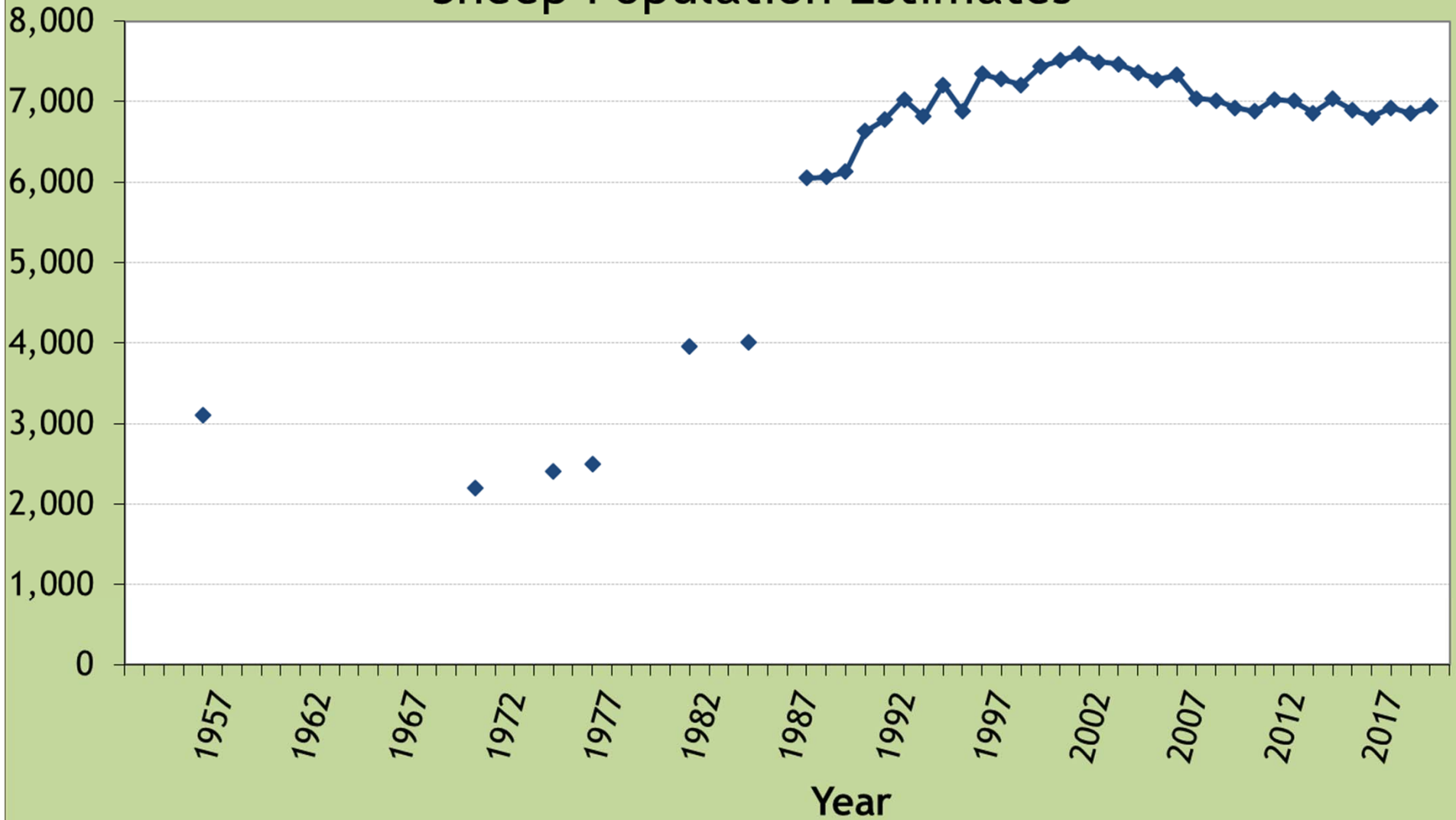
Bighorn Sheep and Mountain Goat License Recommendations

Andy Holland - Colorado Parks and Wildlife
Big Game Manager

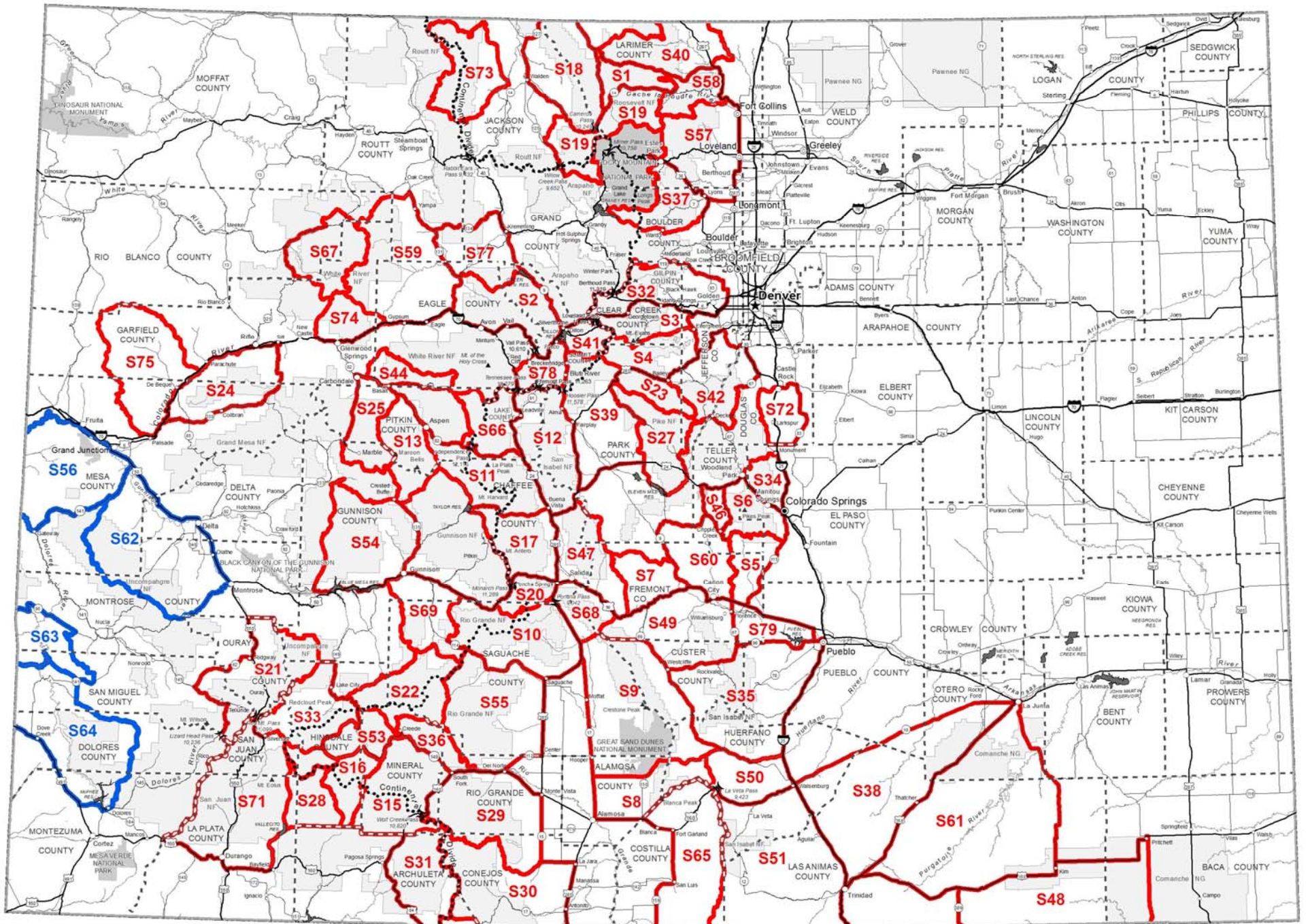


LIVE LIFE
OUTSIDE

Colorado Statewide Rocky Mountain Bighorn Sheep Population Estimates



LIVE LIFE
OUTSIDE



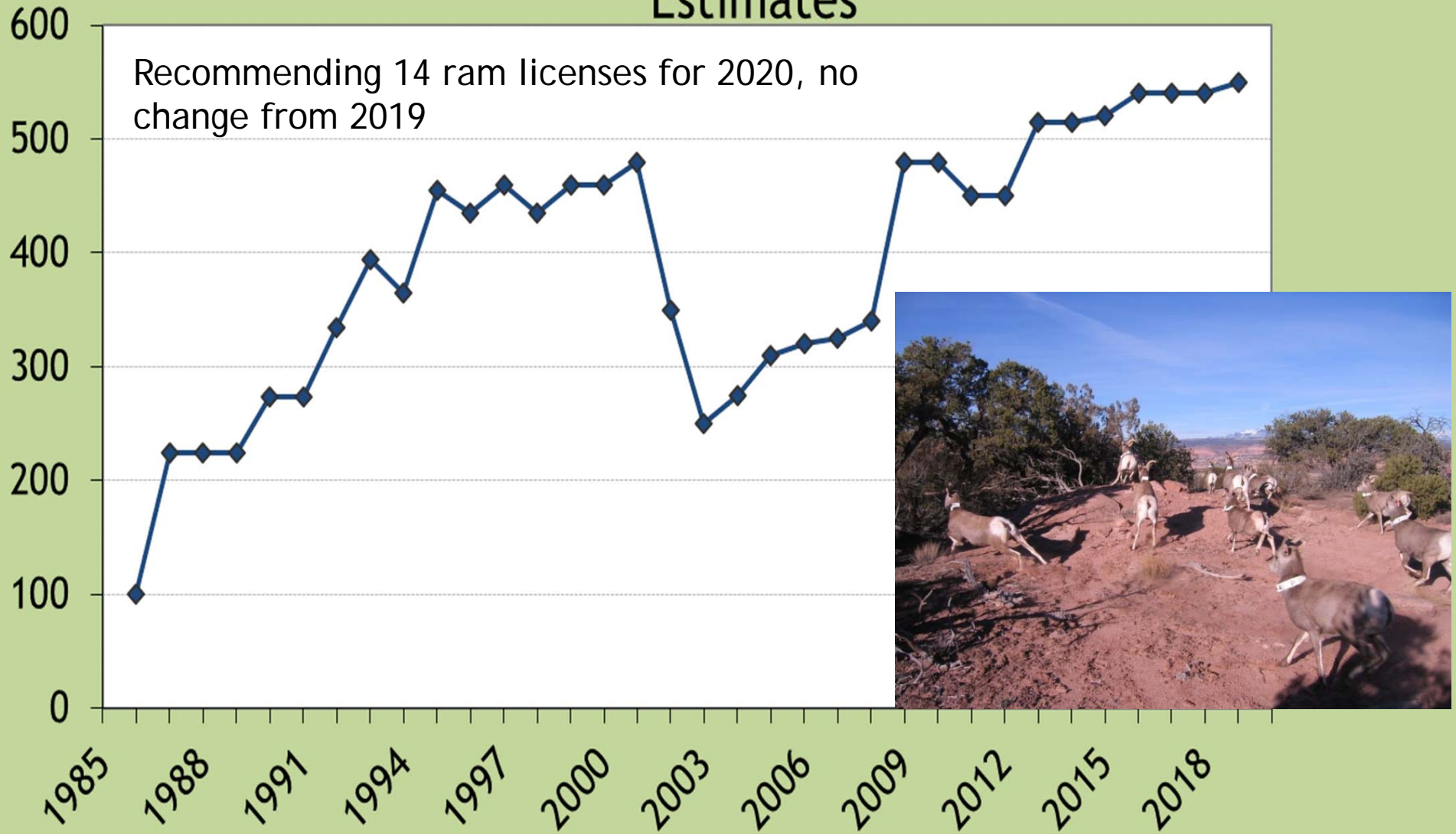
Rocky Mountain Bighorn Sheep License Recommendations

- Recommending an increase from 309 to 319 licenses for 2020
- 236 ram licenses (+4)
- 83 ewe licenses (+6)
- 28,380 applicants in 2019



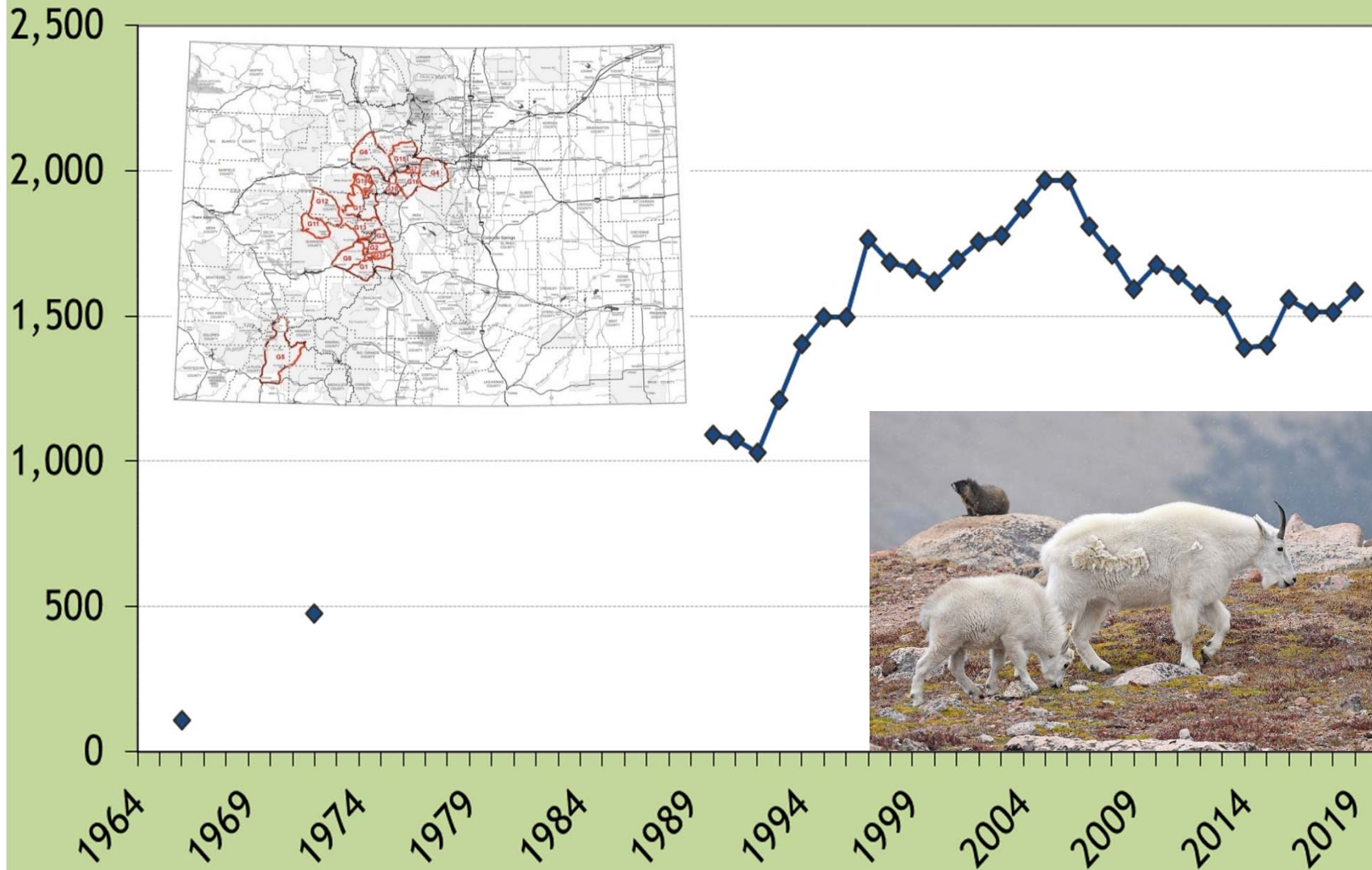
LIVE LIFE
OUTSIDE

Colorado Statewide Desert Bighorn Sheep Population Estimates



LIVE LIFE
OUTSIDE

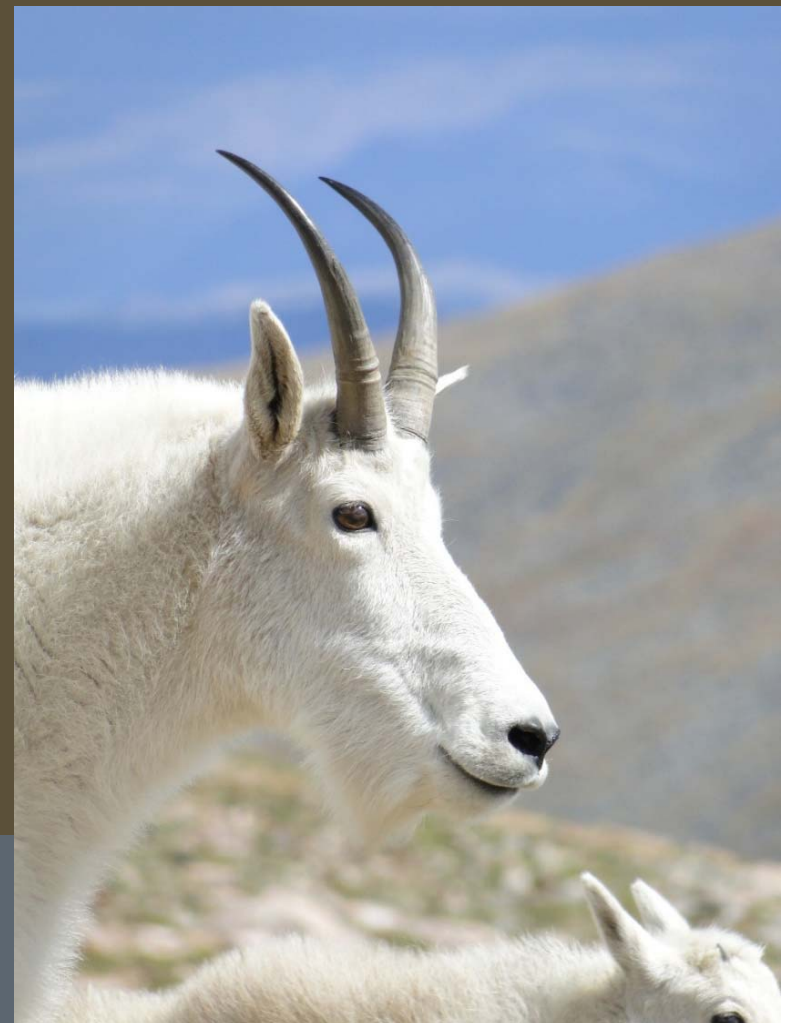
Colorado Statewide Mountain Goat Population Estimates



LIVE LIFE
OUTSIDE

Mountain Goat License Recommendations

- Recommending a decrease of 17 licenses for 2020
- Total down from 236 to 219 licenses
- 20,898 applicants for 236 licenses in 2019



LIVE LIFE
OUTSIDE