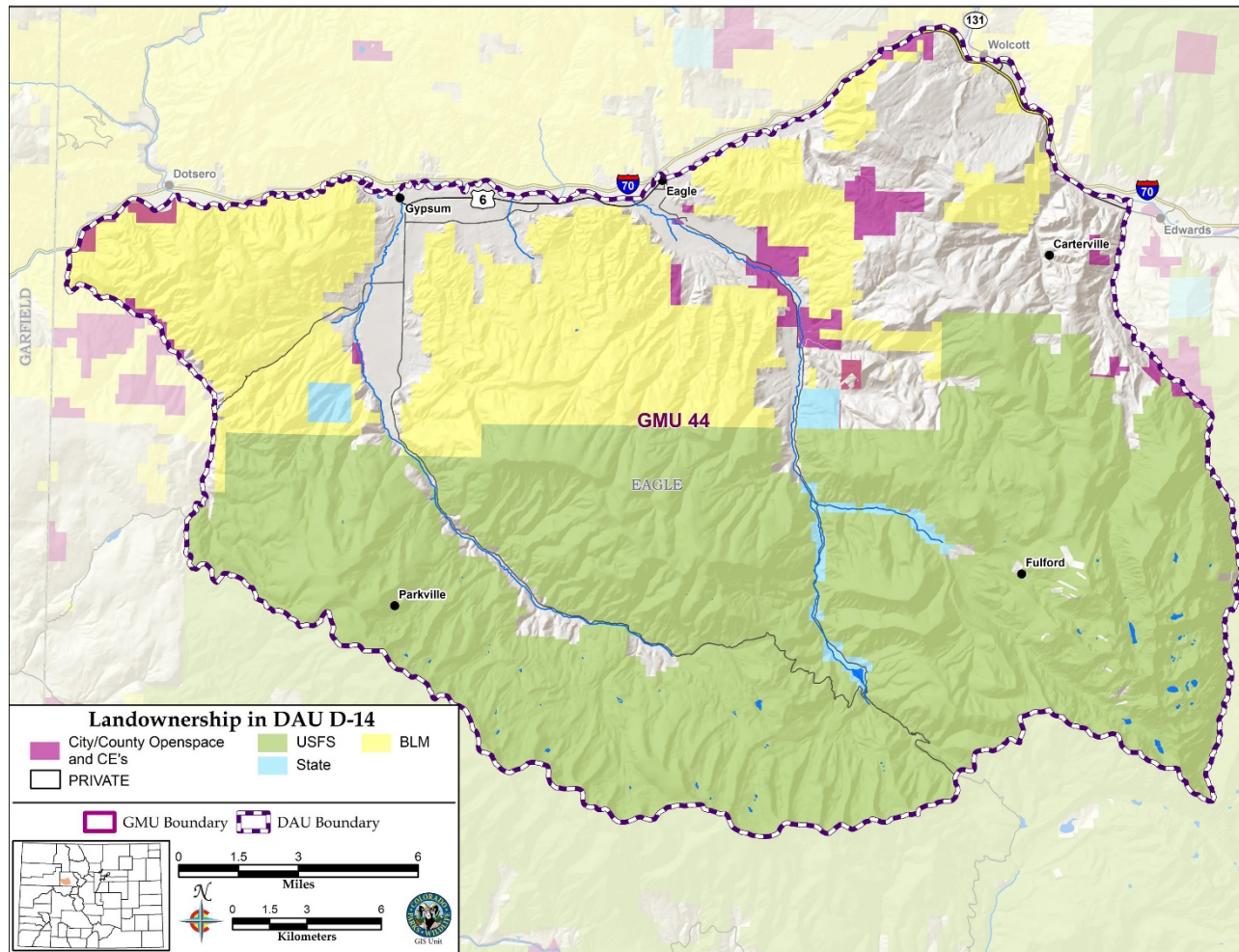


Brush Creek Mule Deer Herd Management Plan

Data Analysis Unit (DAU) D-14



GMU 44

377 square miles
(21% Private, 79%
Public)

Eagle County

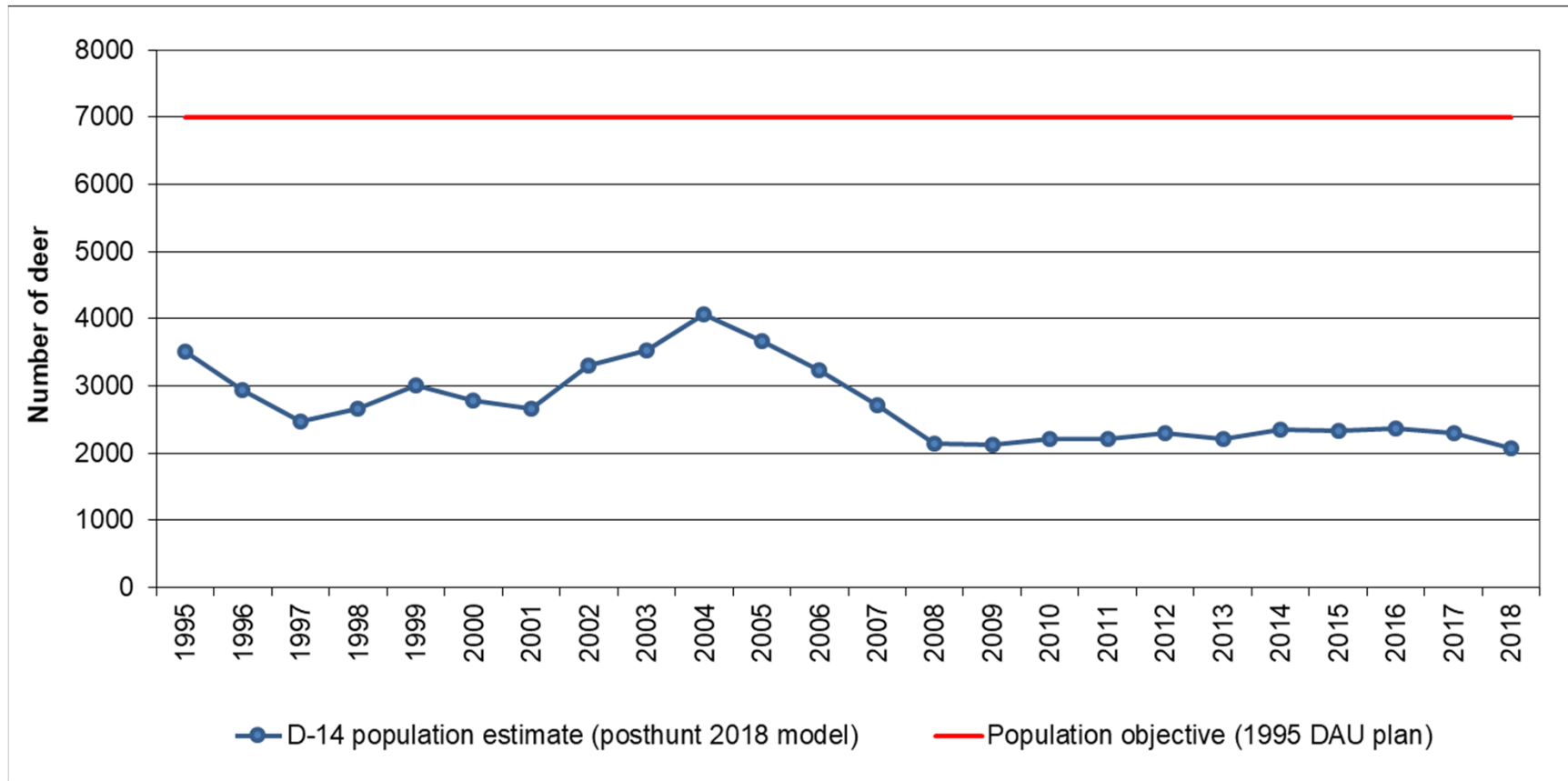
Piñon-juniper, oak,
mountain shrub,
sagebrush, deciduous
& subalpine forests,
alpine habitats

“Quality” buck unit



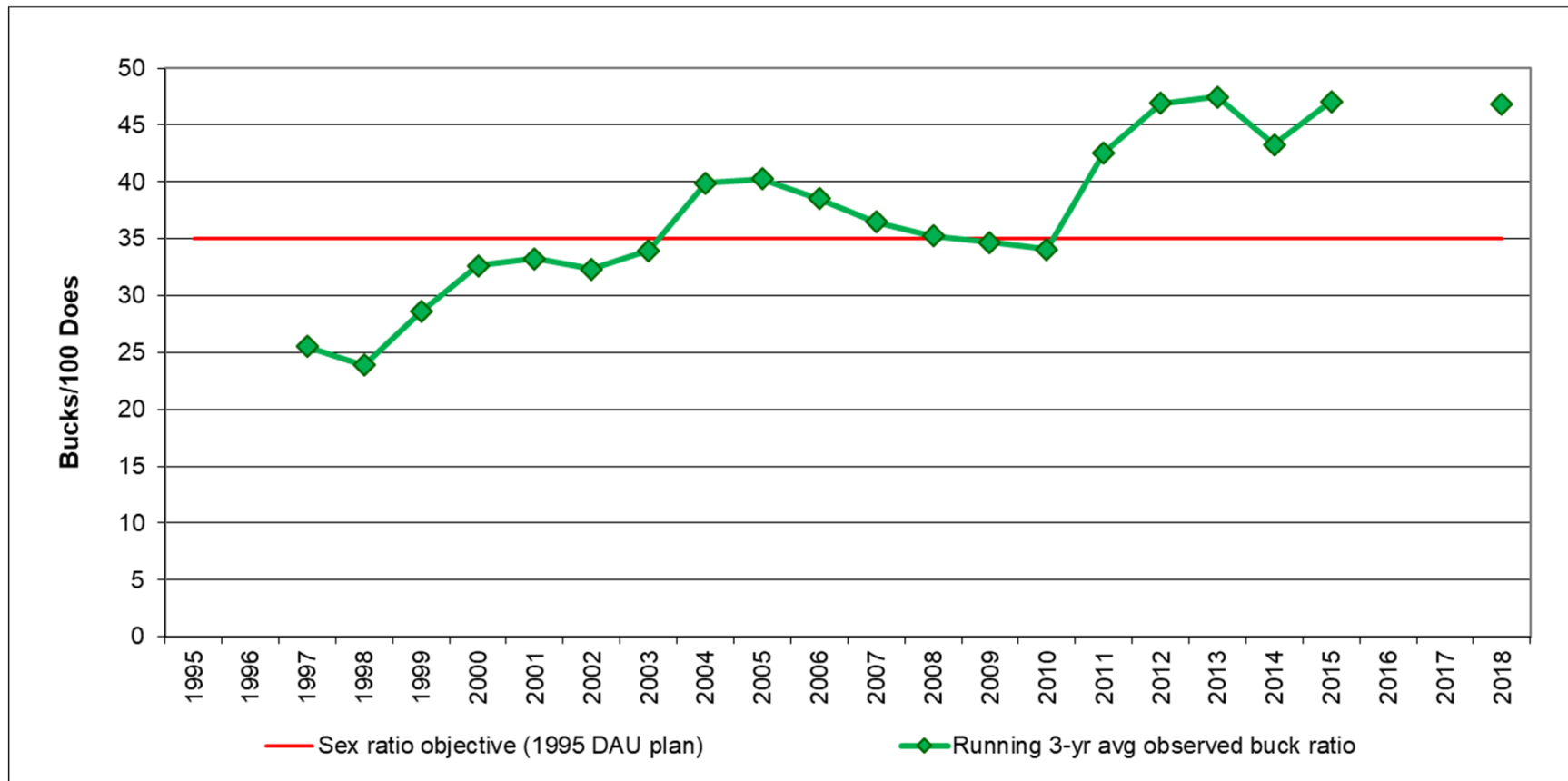
Julie Mao, Wildlife Biologist, Glenwood Springs, Area 8

Post-hunt Population Estimates



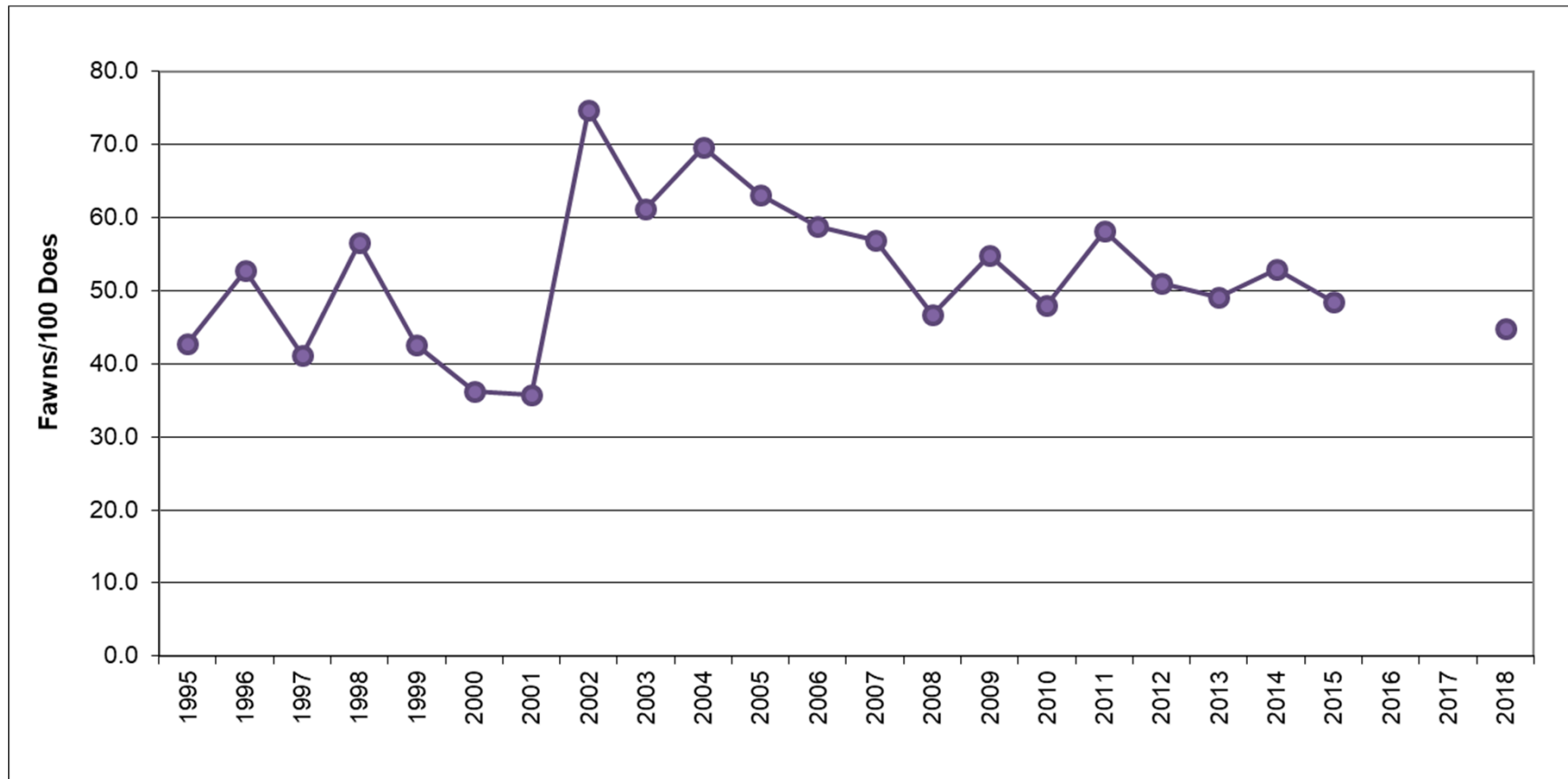
LIVE LIFE
OUTSIDE

Post-hunt Buck:Doe Ratios



LIVE LIFE
OUTSIDE

Post-hunt Fawn:Doe Ratios

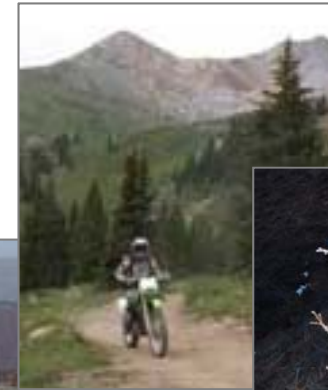


LIVE LIFE
OUTSIDE

Important Issues

Low and stagnant deer population

- Human disturbance
 - Land development
 - Recreation activity
- Habitat condition



Consequences of high buck:doe ratio

- Preference point creep
- Chronic Wasting Disease potential
- Potential trade-offs with other sex/age classes



Herd Management Objectives

Public input was solicited from hunters, landowners, general public, county commissioners, USFS, BLM, and Habitat Partnership Program.

	Population size	Sex ratio (3-year average)
Current objective (1995 plan)	7,000 deer	35 bucks:100 does
Current estimate (post-hunt 2018)	2,070 deer	47 bucks:100 does
Preferred new objective range	1,500 – 3,500 deer	35-45 bucks:100 does



LIVE LIFE
OUTSIDE

Strategies To Achieve Herd Management Objectives

Set license quotas accordingly

- Population size and sex ratio relative to the objectives
- Chronic Wasting Disease prevalence
- Hunting quality vs. opportunity



Protect and enhance mule deer habitat

- Habitat treatment projects
- Conservation easements
- Landscape connectivity
- Seasonal recreation closures



LIVE LIFE
OUTSIDE