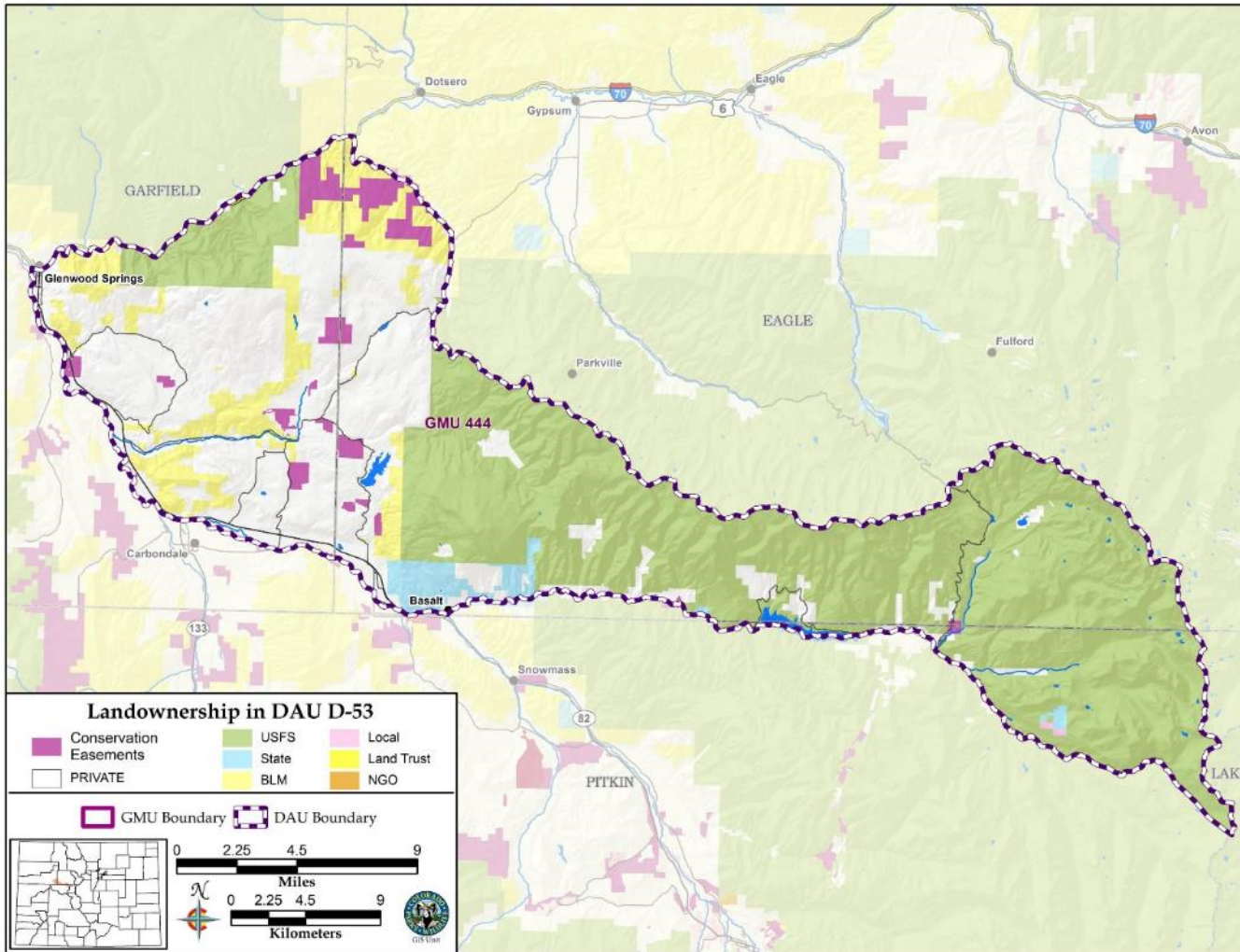


Basalt Mule Deer Herd Management Plan

Data Analysis Unit (DAU) D-53



GMU 444

371 square miles
(35% Private, 65% Public)

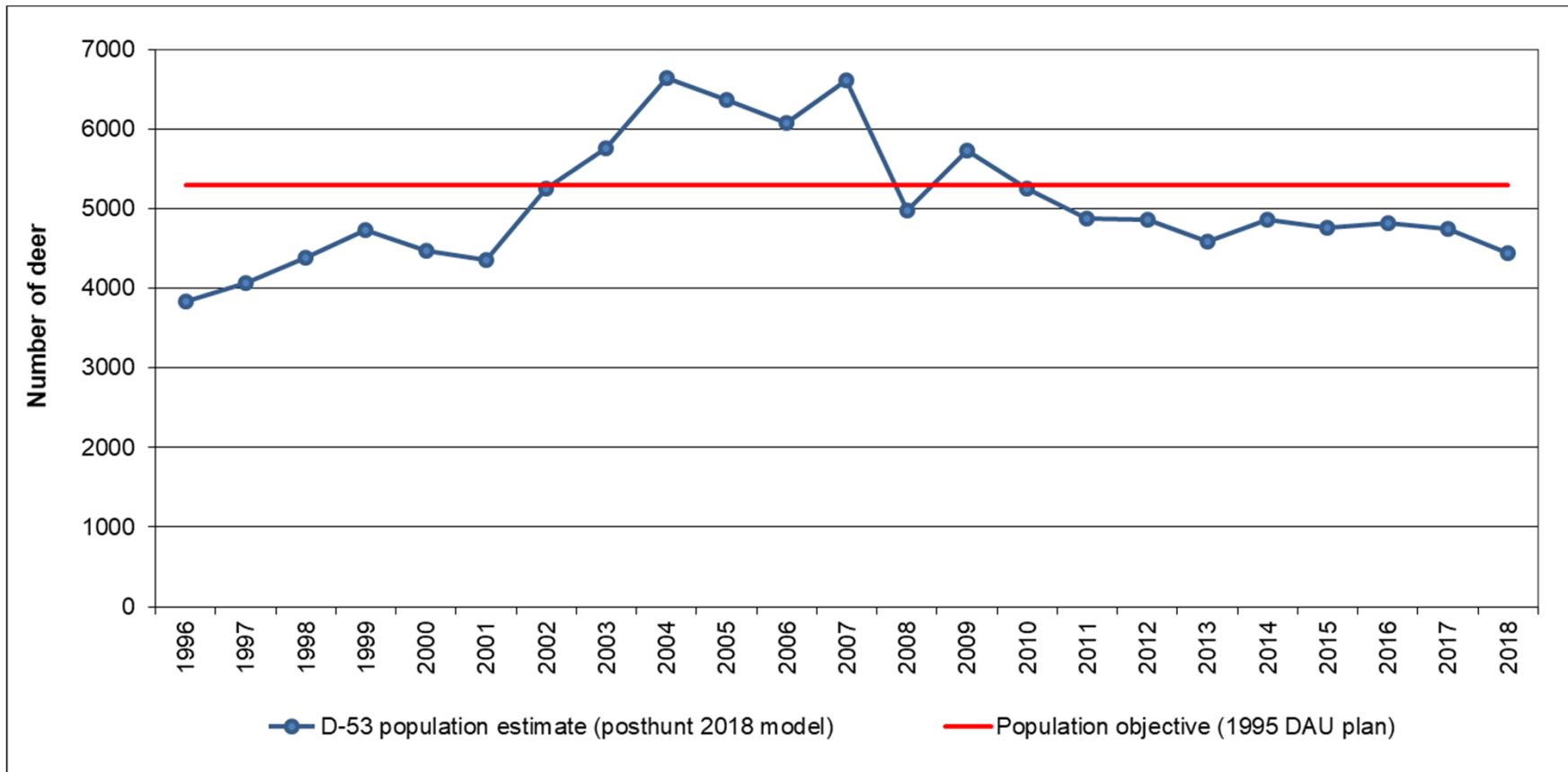
Eagle, Garfield, and Pitkin Counties

Piñon-juniper, oak, mountain shrub, sagebrush, deciduous & subalpine forests, alpine habitats



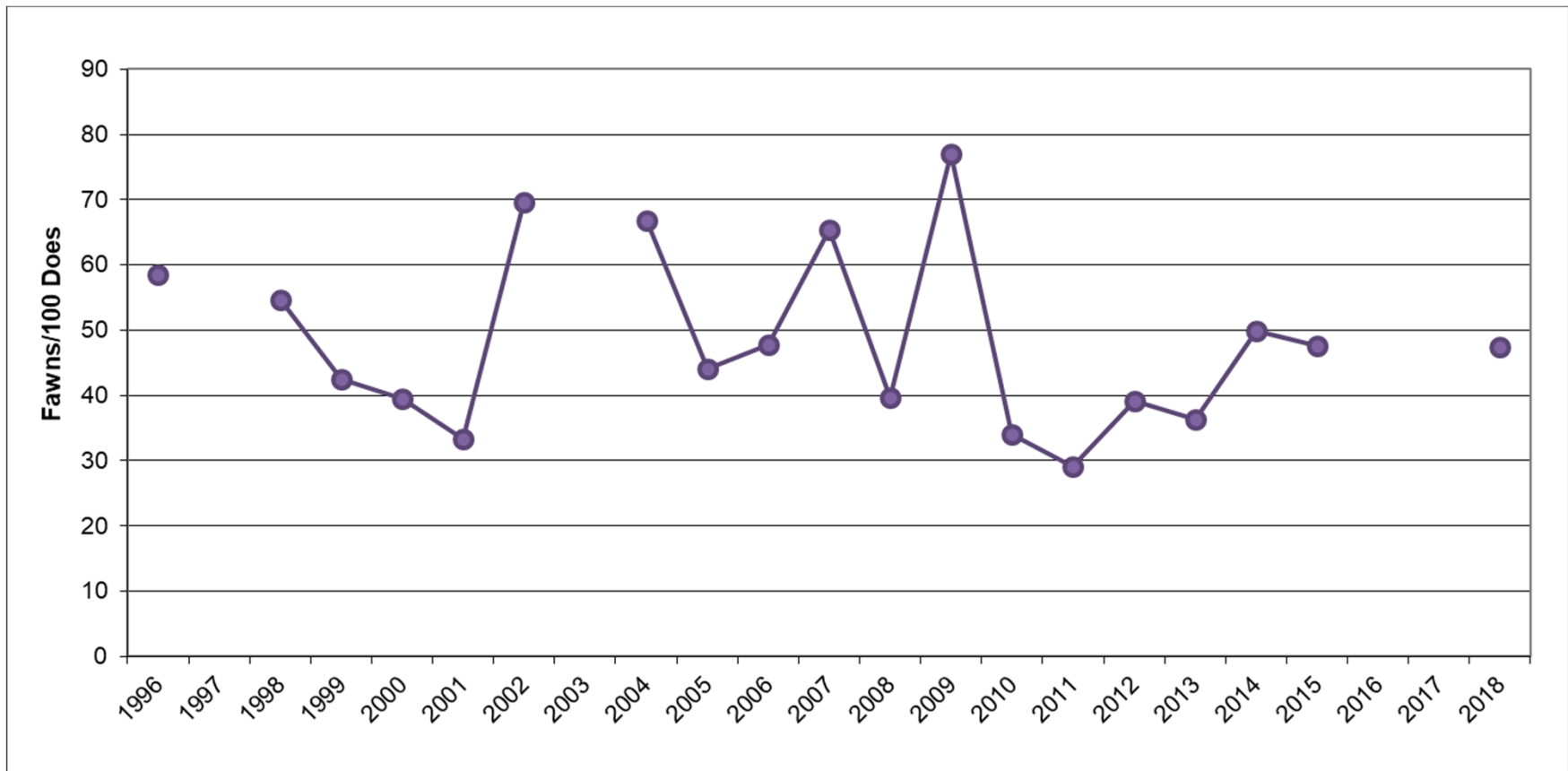
Julie Mao, Wildlife Biologist, Glenwood Springs, Area 8

Post-hunt Population Estimate



LIVE LIFE
OUTSIDE

Post-hunt Fawn:Doe Ratios



LIVE LIFE
OUTSIDE

Important Issues

Low and stagnant deer population

- Human disturbance
 - Land development
 - Recreation activity
- Habitat condition



- Lake Christine fire (2018)



LIVE LIFE
OUTSIDE

Herd Management Objectives

Public input was solicited from hunters, landowners, general public, county commissioners, USFS, BLM, and Habitat Partnership Program.

	Population size	Sex ratio (3-year average)
Current objective (1995 plan)	5,300 deer	30 bucks:100 does
Current estimate (post-hunt 2018)	4,400 deer	42 bucks:100 does
Preferred new objective range	4,000 – 6,000 deer	32-40 bucks:100 does



LIVE LIFE
OUTSIDE

Strategies to achieve herd management objectives

Set license quotas accordingly

- Population size and sex ratio relative to the objectives
- Main immediate change: restore doe license quotas

Protect and enhance mule deer habitat

- Habitat treatment projects
- Conservation easements or land purchases
- Landscape connectivity and movement corridors
- Seasonal recreation closures on winter ranges



LIVE LIFE
OUTSIDE