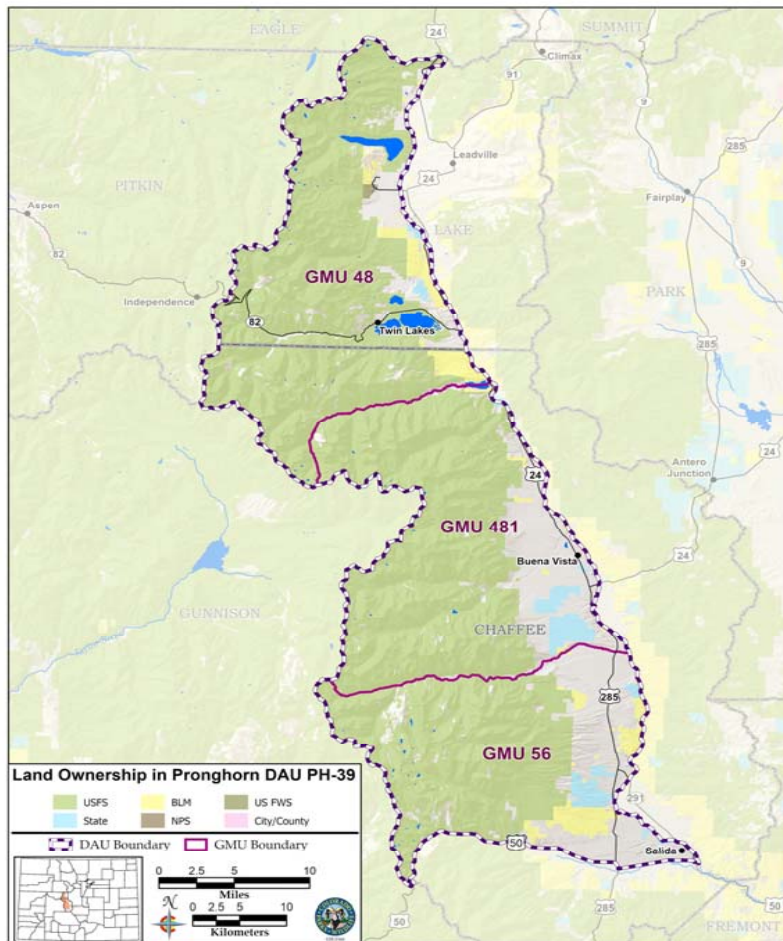


Collegiate Range Pronghorn Herd Management Plan Data Analysis Unit PH-39

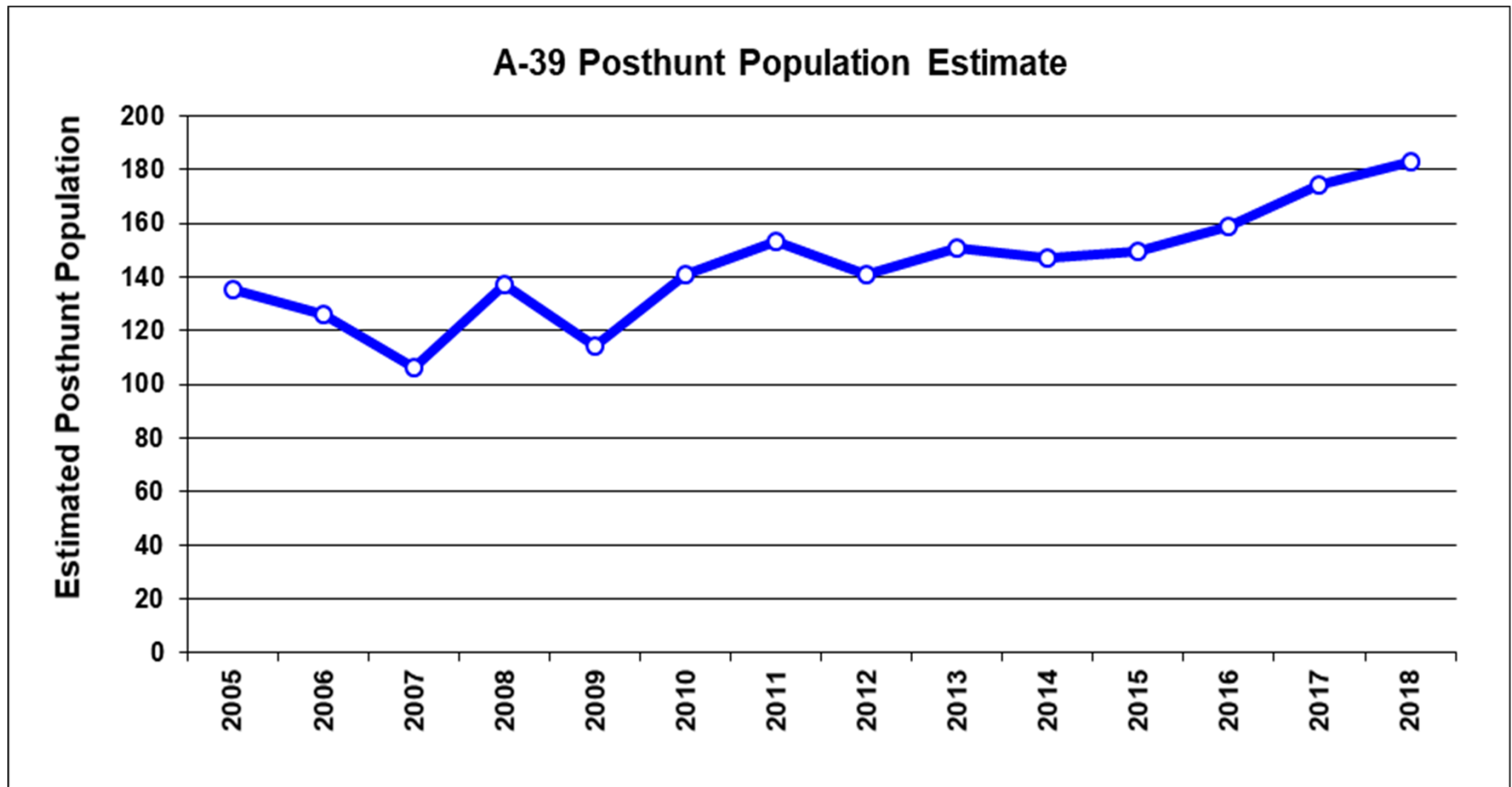


- 820 mi²
- 80% public, but only 12% considered pronghorn habitat
- GMUs 48, 56, 481
- Portions of Chaffee and Lake Counties
- Unlimited archery, limited rifle and muzzleloader



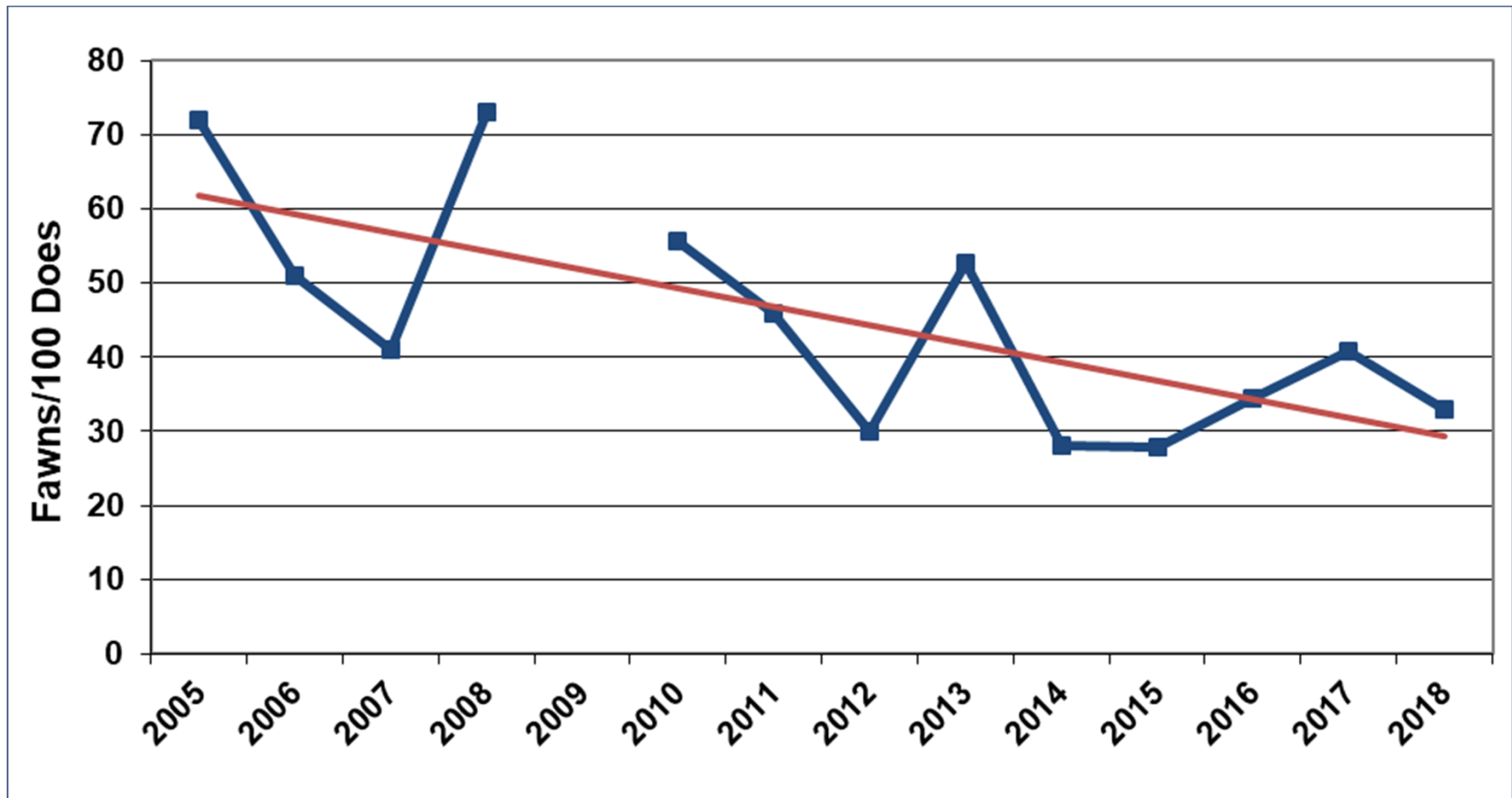
Jamin Grigg, Wildlife Biologist, Salida, Area 13

PH-39 Post-Hunt Population



LIVE LIFE
OUTSIDE

PH-39 Pre-Hunt Observed Fawn:Doe Ratios



LIVE LIFE
OUTSIDE

PH-39 Collegiate Range Pronghorn Herd

Important Issues

- Housing development and loss of agriculture
- Invasive weeds and other habitat changes
- Pronghorn taking refuge on private lands
- Hunter access



LIVE LIFE
OUTSIDE

Public Outreach

- Surveyed Local Landowners and PH-39 Hunters
- Presented to Local Habitat Partnership Program Committee
- Posted on CPW Website
- Results
 - Landowners & hunters supported current population size. Desire to go limited for archery.



LIVE LIFE
OUTSIDE

Current Status and Alternatives

- Current Post-Hunt Population Estimate
 - Objective: 150 Pronghorn
 - Estimate: 200 Pronghorn
- Post-Hunt Population Alternatives
 - Alternative 1: 150 Pronghorn (Status Quo)
 - Alternative 2: 100-150 Pronghorn
 - Alternative 3: 150-200 Pronghorn
- Post-Hunt Sex Ratio Alternatives
 - Alternative 1: 30-35 bucks: 100 does
 - Alternative 2: 20-25 bucks: 100 does



Strategies to Address Management Concerns and Objectives

Addressing Management Concerns

- Land and habitat protection
- Public hunting access
- Mitigate game damage and landowner concerns

Managing to Objectives

- Population currently within preferred alternatives
- Examine harvest annually
 - Adjust buck/doe licenses as necessary
 - Switch from unlimited archery to limited archery?



LIVE LIFE
OUTSIDE