

Draft West Slope Mountain Lion Management Plan

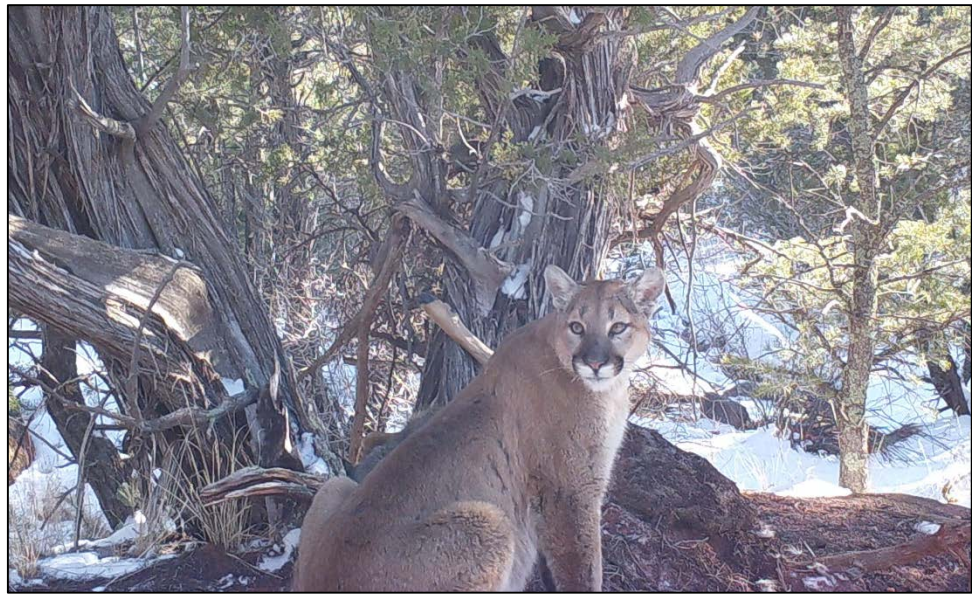
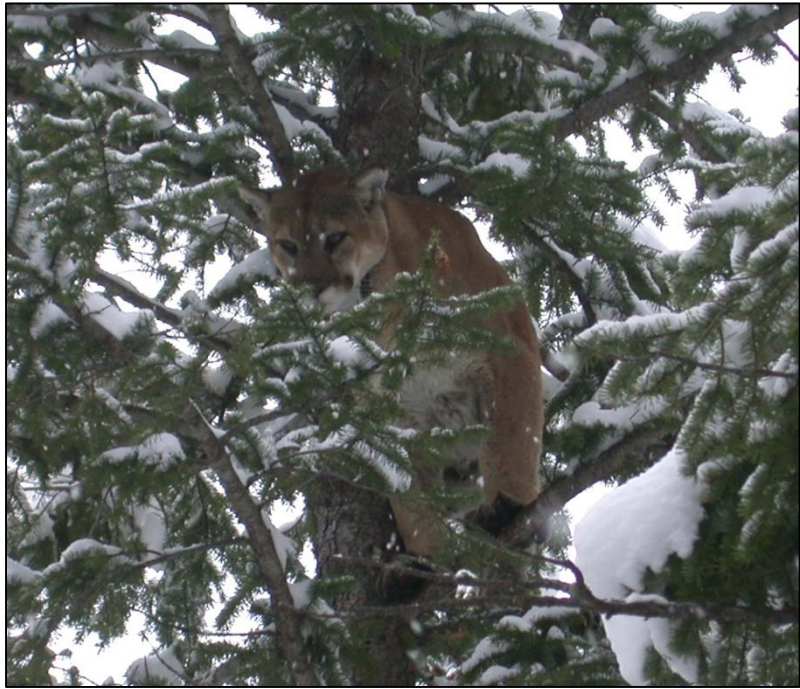


July 16-17 2020
Virtual PWC Meeting
Mark Vieira

Carnivore and Furbearer Program Manager

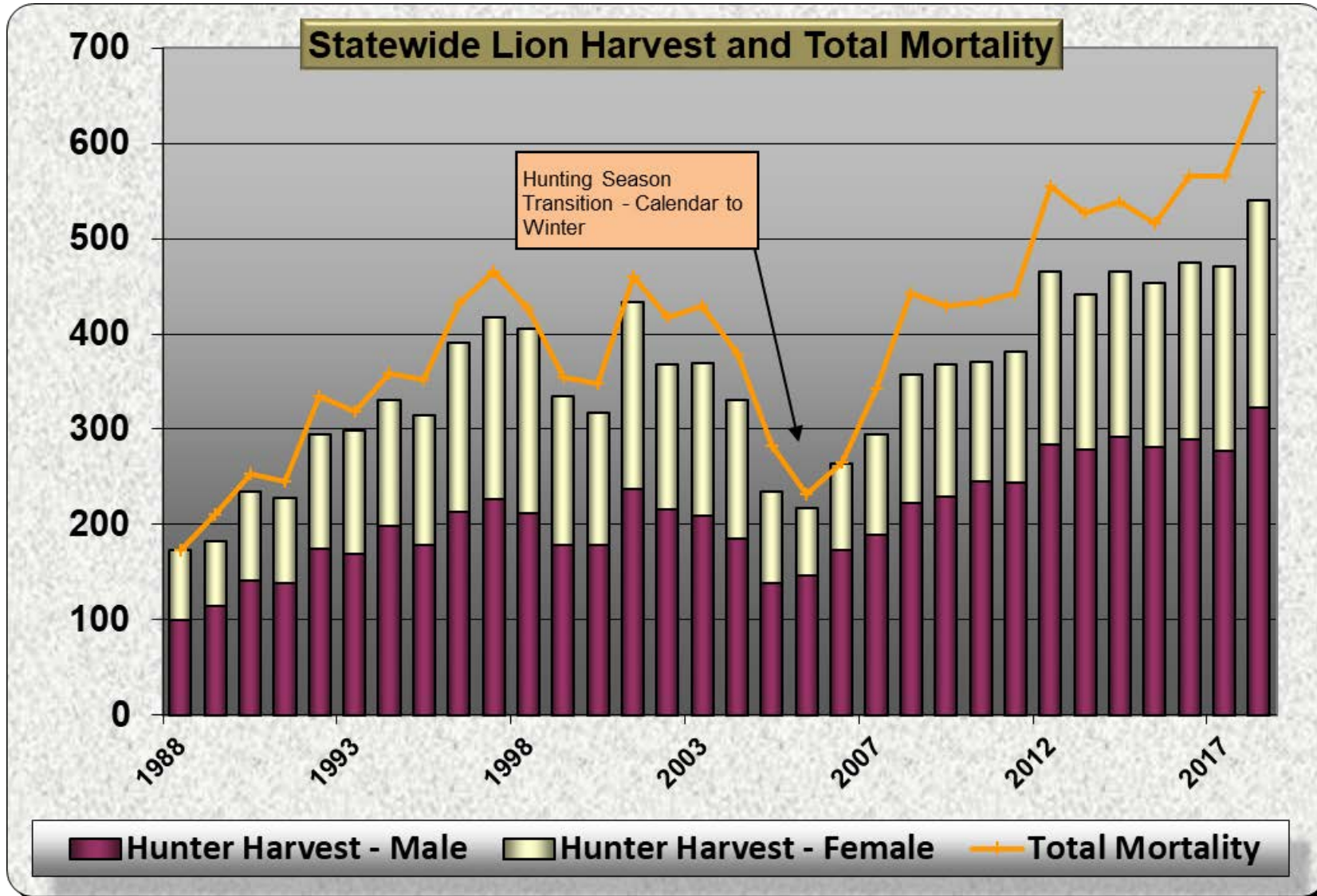


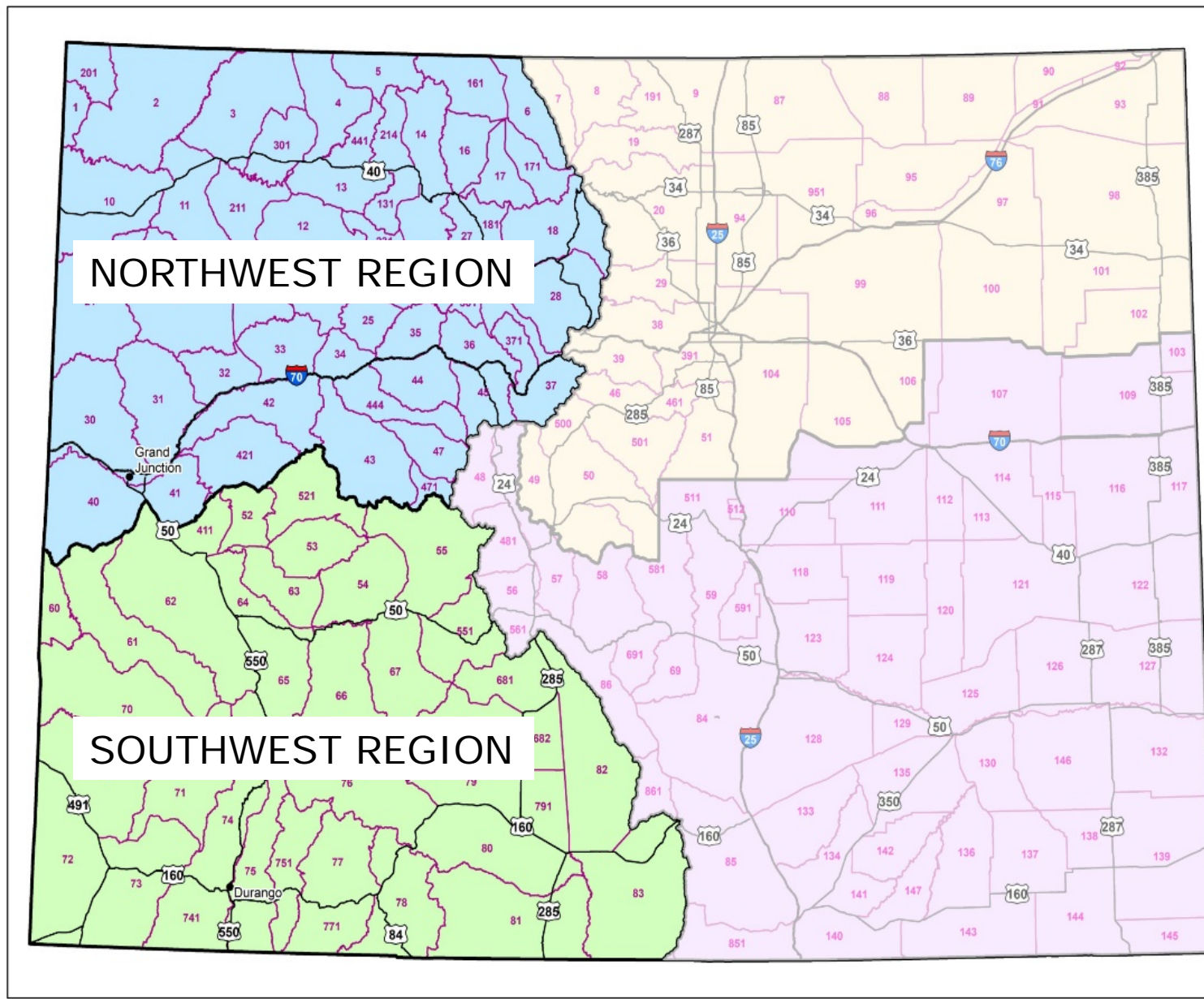
LIVE LIFE
OUTSIDE



LIVE LIFE
OUTSIDE

Colorado Mortality History

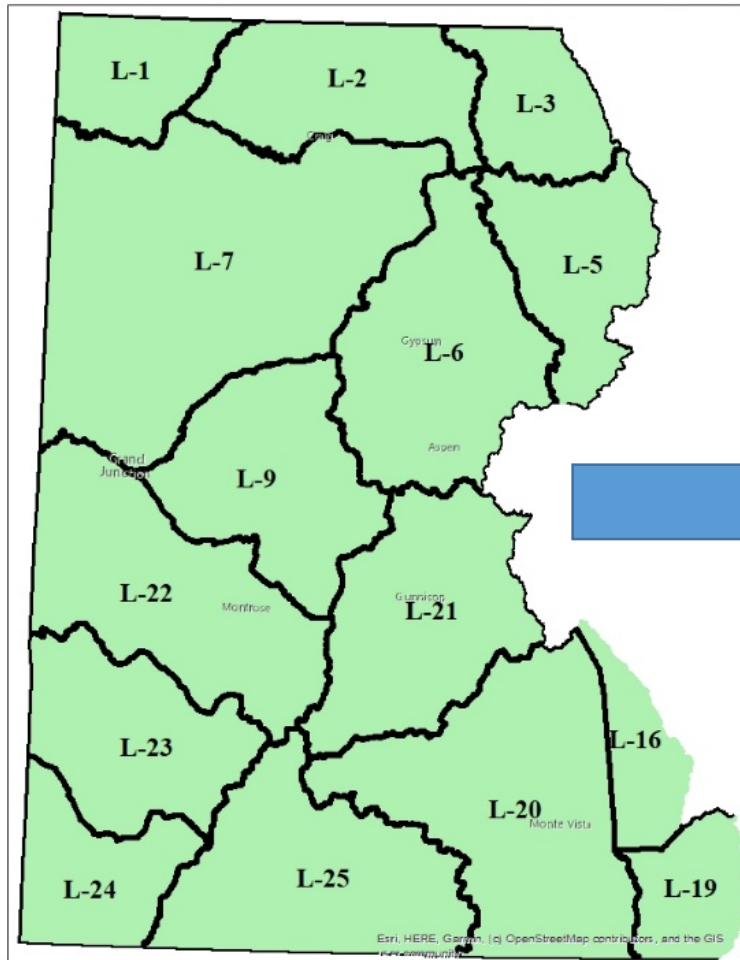




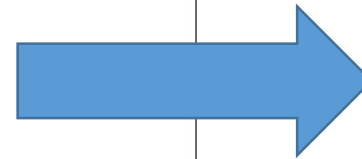
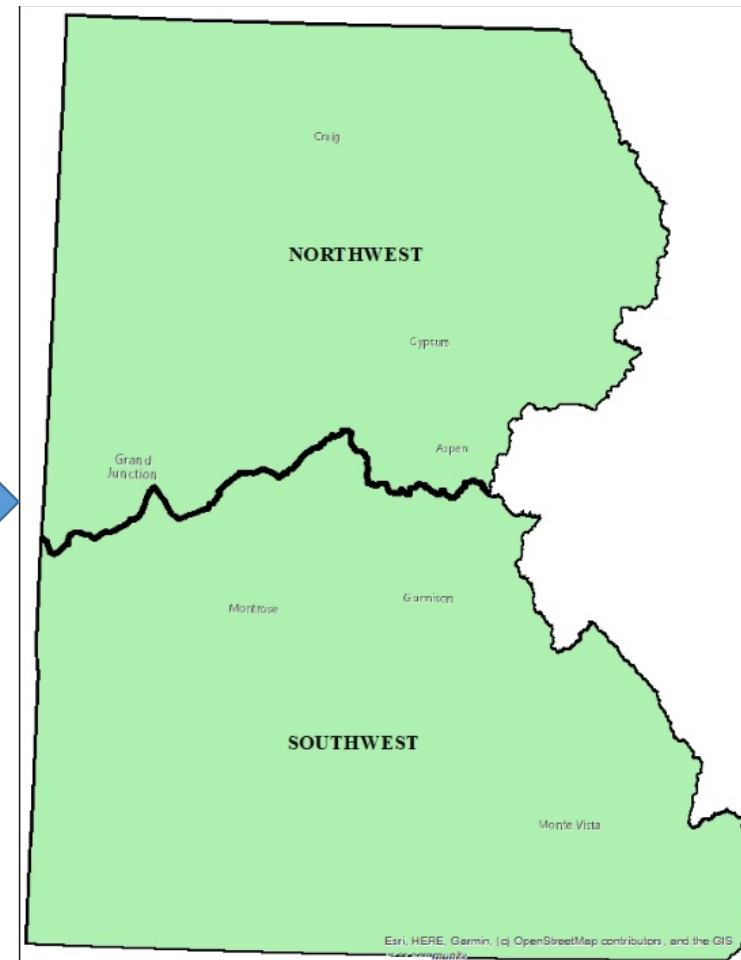
LIVE LIFE
OUTSIDE

Increasing Spatial Scales and Stable Objectives

Current West Slope DAUs

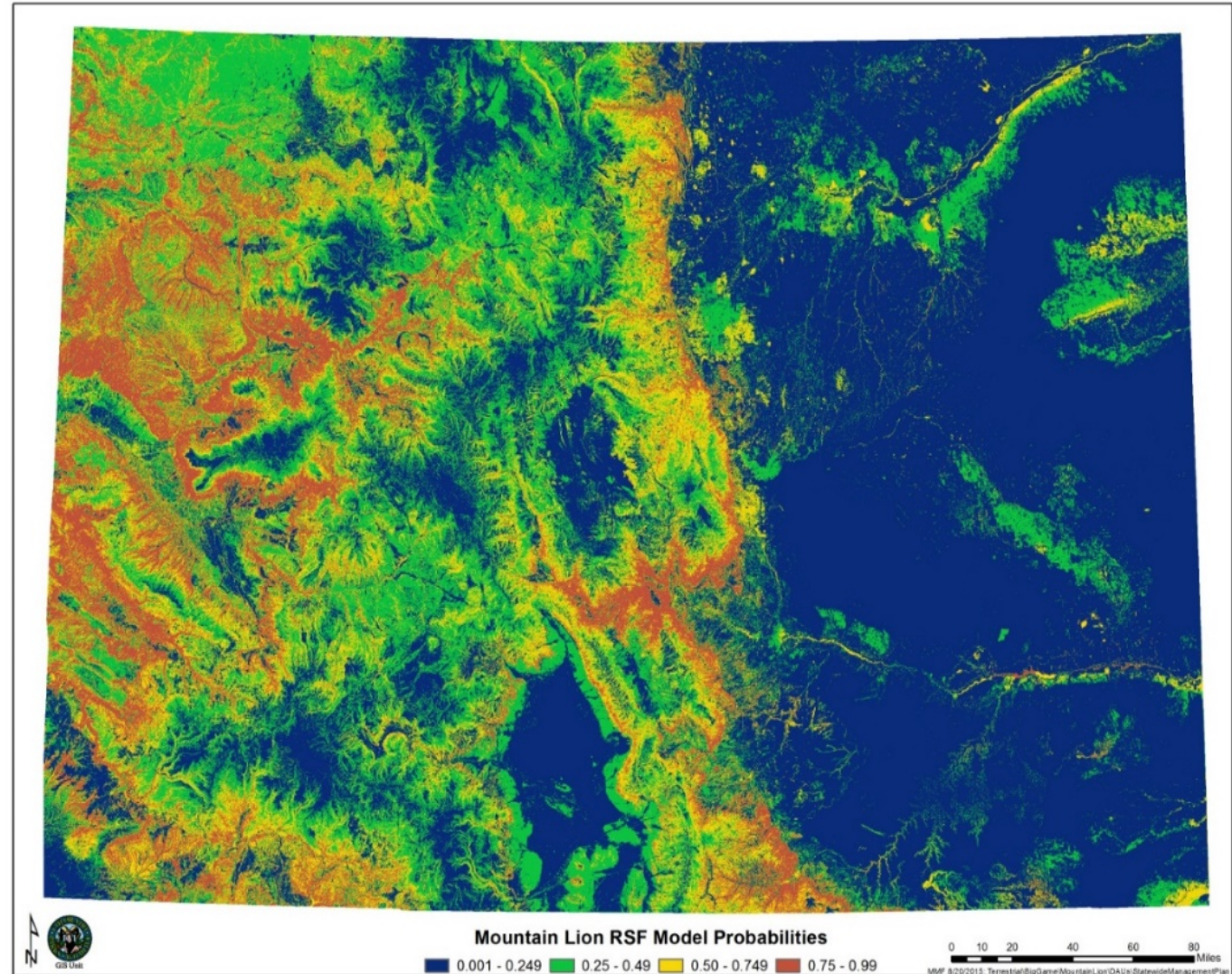


Proposed West Slope DAUs



Resource Selection Function Model

- Snapshot of a potential lion population projection
- Applies a range of independent lion densities to different qualities of habitat on the West Slope



Plan Objective and Management Thresholds

- West Slope Plan Objective: Stable Lion Population in each Region (excluding Glenwood SMA)
- Two independent thresholds, evaluated annually, to keep population at this Stable Objective



LIVE LIFE
OUTSIDE

Adult Female Composition Threshold

- The adult female proportion in harvest will not exceed 22% of the total Regional harvest composition (in any single year)
- Studies indicate 22-25% of adult females in total harvest is an inflection point for population
- Voluntary female harvest reduction
- Importance of use of hounds



Total Human-caused Mortality Threshold

- Total human-caused mortality will not exceed 17% of projected lion population in the Region (using a running 3-year average)



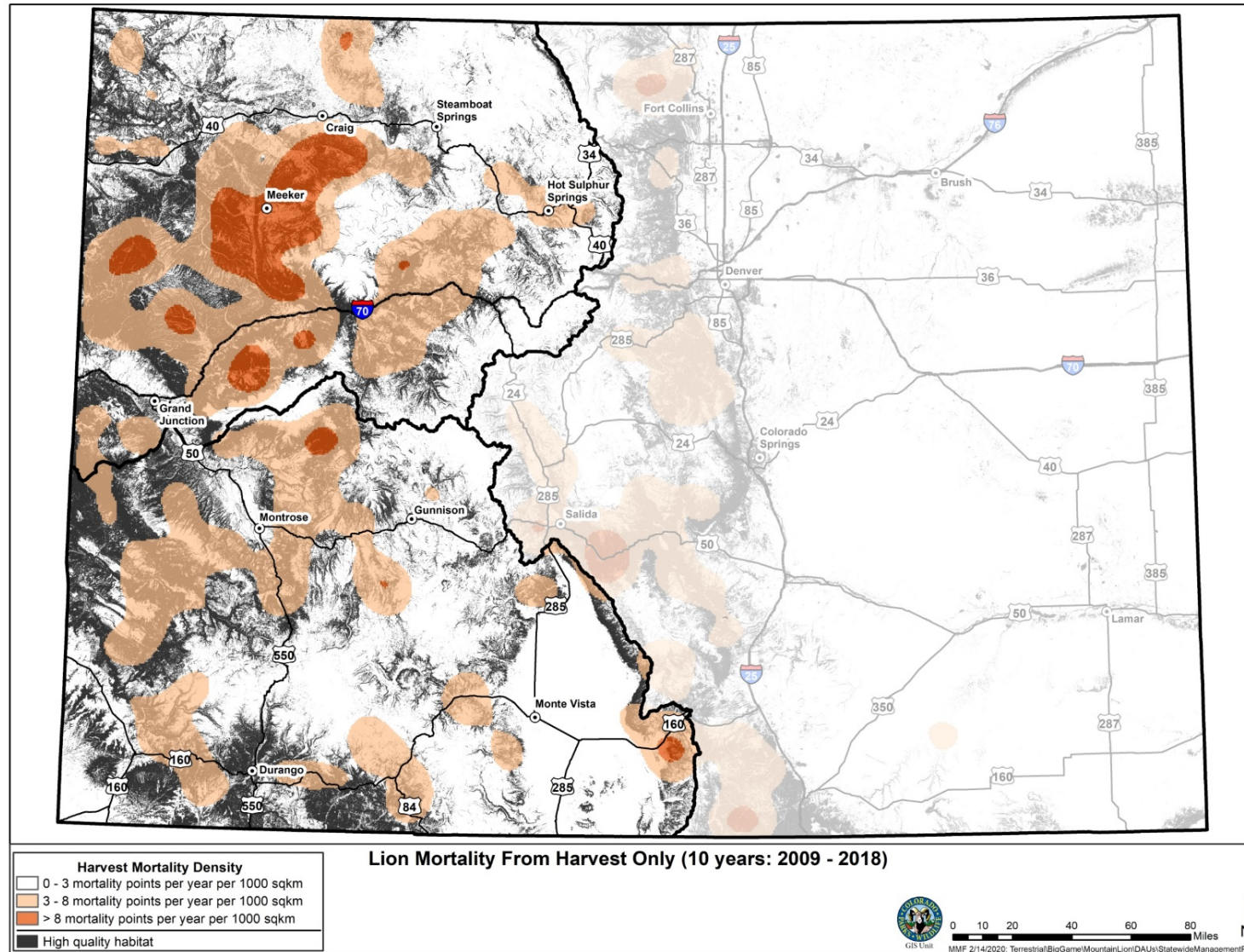
LIVE LIFE
OUTSIDE

Glenwood Springs Special Management Area

- Defined in space (4 GMUs) and time (life of plan)
- Exempted from Regional Thresholds
- Has defined Objectives and Adaptive Management Monitoring approach
- Full suite of management tools to reduce conflicts
- More detailed presentation from AWM Matt Yamashita



Lion Resiliency to Harvest



Lion Density Surveys



Use mark-resight survey areas on West Slope to confirm and align RSF model and refine densities applied

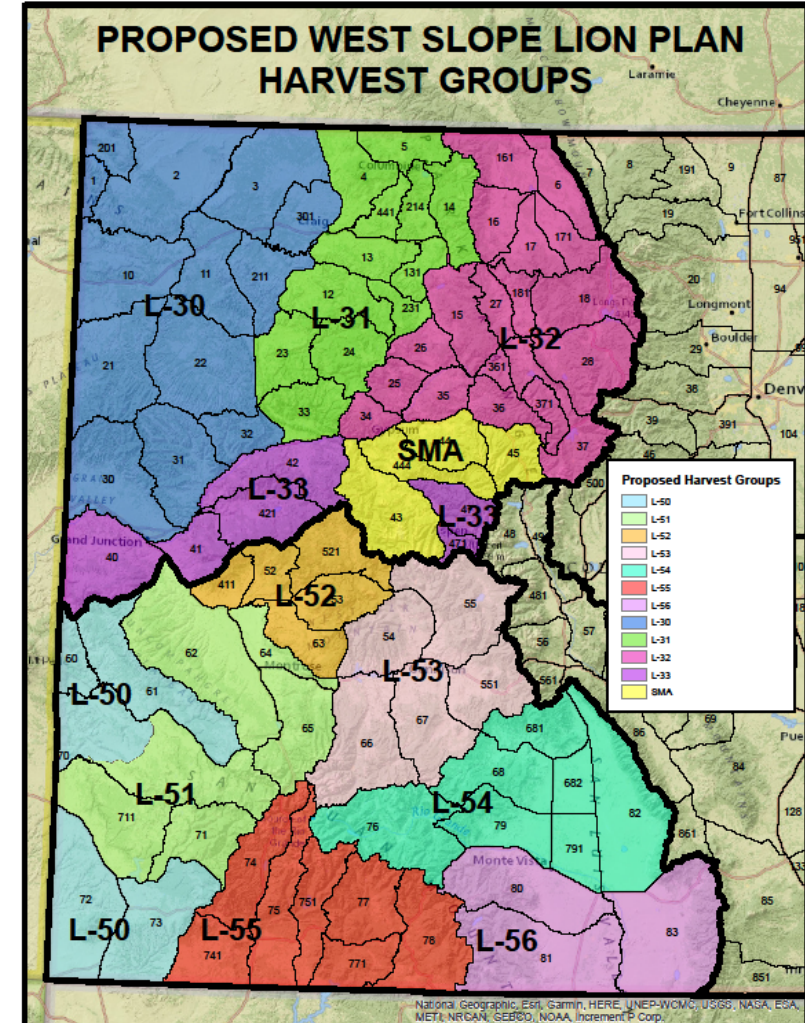


LIVE LIFE
OUTSIDE

New Regulations for 2021 Under Approved West Slope Lion Plan

Regulations to implement the plan:

- Reduction in harvest limits
 - ✓ Regional harvest objectives in 2021 will represent a *reduction* from current totals in both Regions
- Change in harvest limit groups
 - ✓ Harvest limit groups will group more GMUs
- Electronic calls legal in new L-50 and Glenwood Springs SMA
- Harvest opportunity in Glenwood Springs SMA during deer/elk season
- April season only in Glenwood Springs SMA



Timeline and Process for Plan Approval and Implementation

- Two-step PWC approval process for West Slope Lion Plan in July and September
- Draft regulations needed for implementation presented at September PWC meeting along with final West Slope Lion Plan
- Harvest Limits proposed in Plan approved in January
- Implementation of Plan beginning for April 2021-March 2022 lion season

