



LIVE LIFE
OUTSIDE

Jon Holst
CPW Southwest Region
Energy Liaison
(970) 759-9588
Jon.Holst@state.co.us

CPW Energy & Land Use

Staff Involvement, Procedures, & Processes for Land Use Reviews and Commenting

A photograph of two deer in a field of tall, golden-brown grass. One deer is on the left, partially obscured by the grass, and the other is on the right, standing and looking towards the camera. A large white circle with the word "No!" in blue text is superimposed over the center of the image.

No!

Does CPW regulate energy development and land use?



LIVE LIFE
OUTSIDE





“To perpetuate the wildlife resources of the state, to provide a quality state parks system, and to provide enjoyable and sustainable outdoor recreation opportunities that educate and inspire current and future generations to serve as active stewards of Colorado’s natural resources.” (C.R.S. § 33-9-101(12)(b))



LIVE LIFE
OUTSIDE

WHO REGULATES LAND USE IN CO?

- **272** Local Municipalities
- **64** Counties
- **28** Open Space Departments

- **8** Colorado Oil & Gas Conservation Commission (COGCC) Well Specialists
- **7** State Land Board (SLB) Offices (6 Districts & 1 State Office)
- **5** Colorado Department of Transportation (CDOT) Regional Offices
- **2** Division of Reclamation Mining and Safety (DRMS) Offices

- **11** Forest Service (USFS) National Forests (33 Ranger Districts & Grasslands)
- **10** Bureau of Land Management (BLM) Field Offices (4 Districts & 1 State Office)
- **10** National Parks, Monuments and Recreation Areas
- **4** Army Corps of Eng. (ACOE) Districts (Sacramento, Omaha, Kansas City & ABQ)

- **38** Land Trusts



LIVE LIFE
OUTSIDE

CPW'S ROLE IN LAND USE IS TO PROVIDE INPUT TO REGULATORY AGENCIES



ASSESS impacts to wildlife, habitat, and recreational opportunities from individual development proposals and land use planning efforts



RECOMMEND measures to *avoid*, *minimize*, and *mitigate* impacts to wildlife

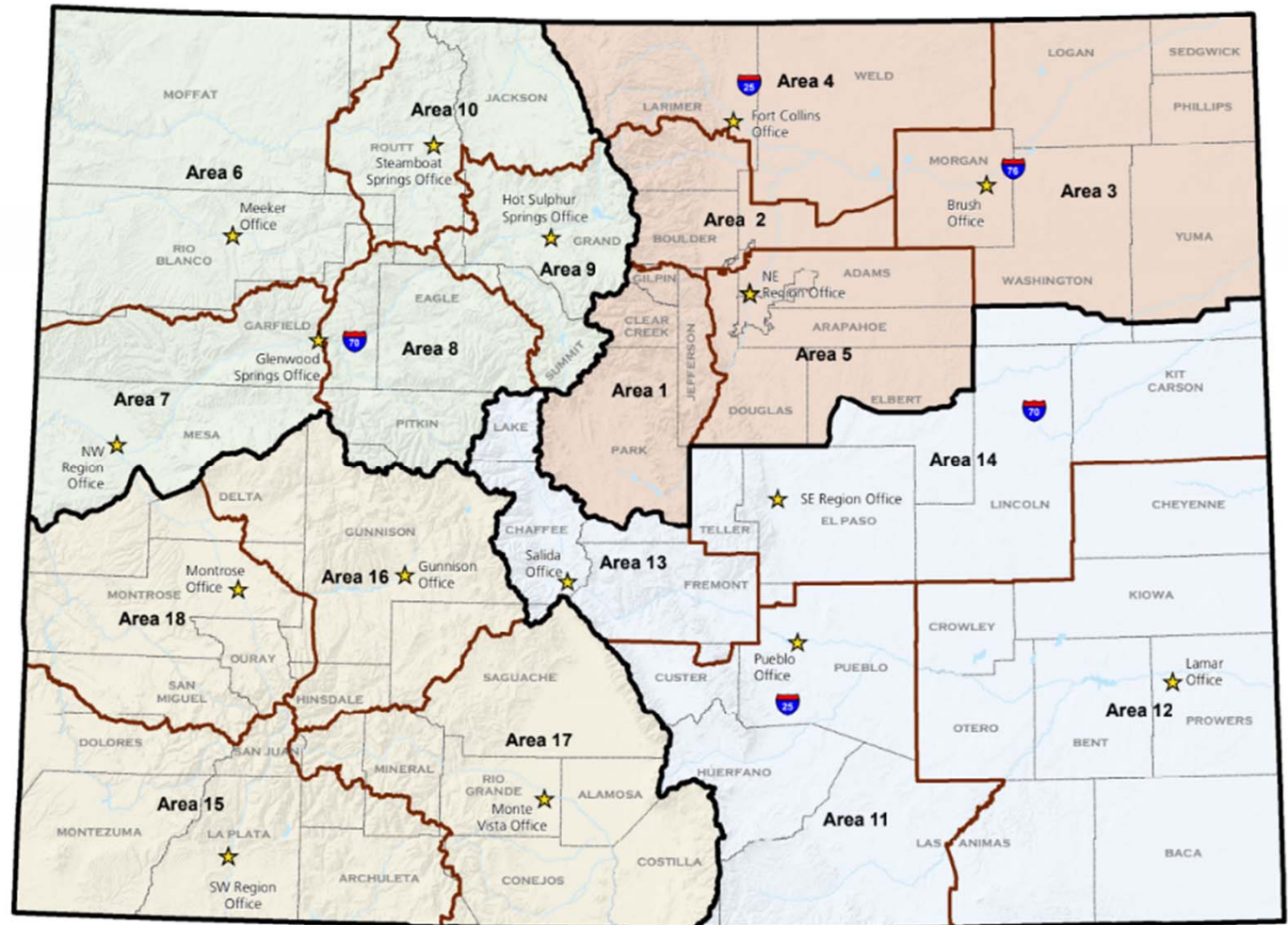


COORDINATE implementation of mitigation efforts to offset impacts from development activities



LIVE LIFE
OUTSIDE

CPW Regions & Areas

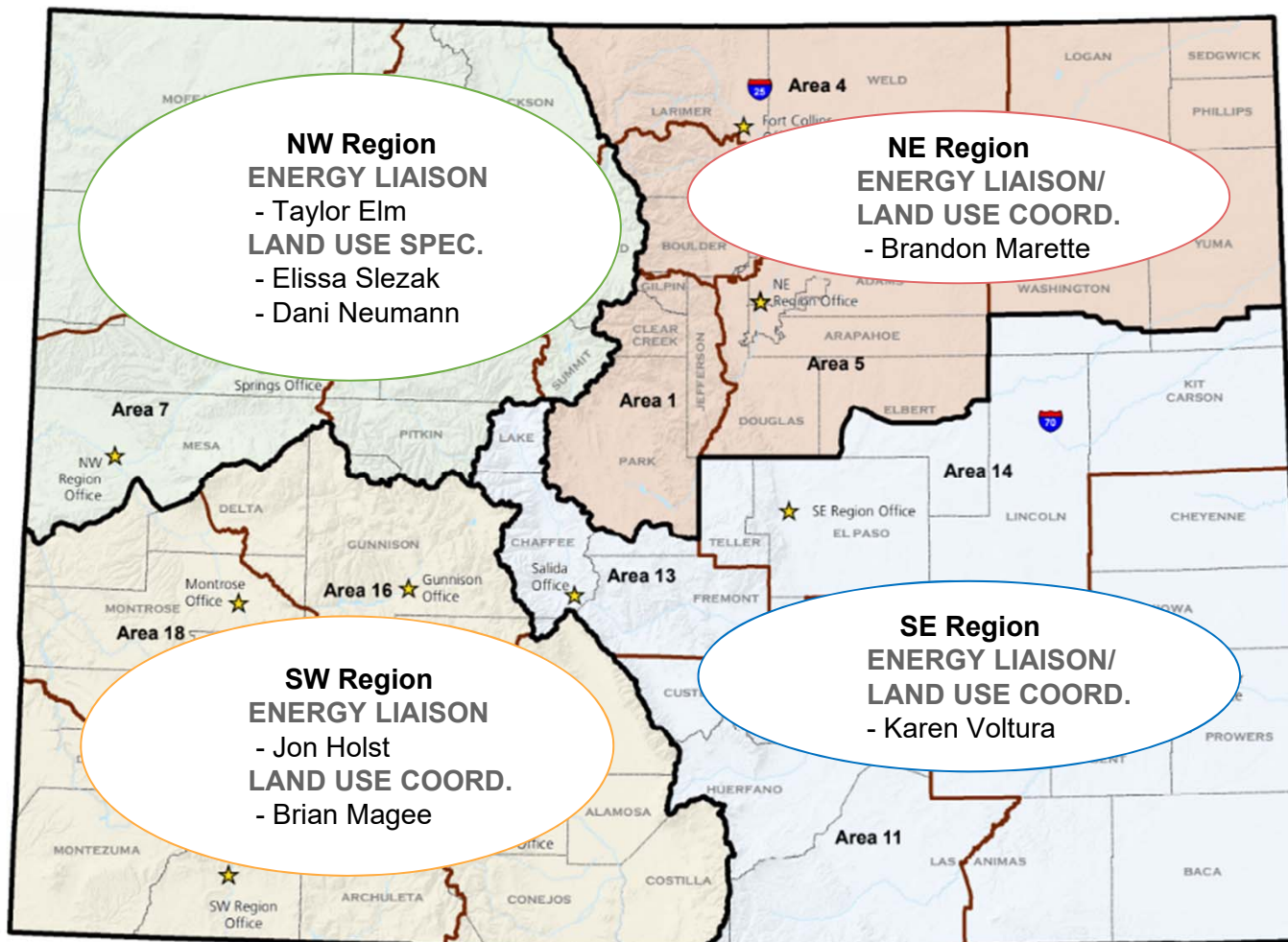


LIVE LIFE
OUTSIDE

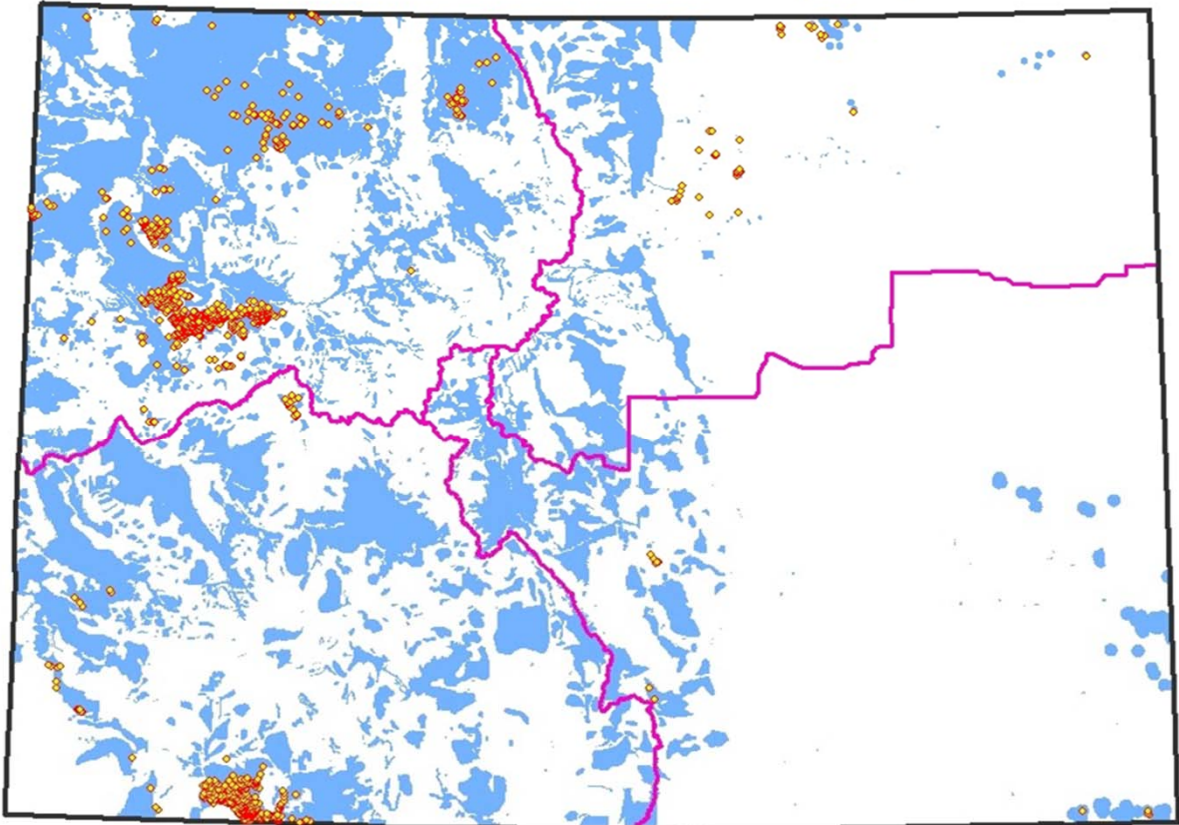
8,000
Wells Per
Year



LIVE LIFE
OUTSIDE



5,505
Wells Drilled in
Sensitive Wildlife
Habitat Since
January 2009



● SWH Wells Drilled Since 2009 □ CPW Regions ■ HB 1298 SWH

0 30 60 120 Miles



AVERAGE STATEWIDE LAND USE REQUESTS AND REFERRALS FOR CPW STAFF PER YEAR

Oil and Gas Form 2A Consultations (<i>per COGCC Rules</i>)	70 - 150*
Federal Agency Referrals & NEPA Processes	83 - 108
Other State Agency Referrals (<i>excluding O&G consults</i>)	104 - 126
County and Local Municipality Referrals	380 - 470
Renewable Energy (<i>Utility-Scale Wind & Solar</i>)	48 - 61
State Trail Grant Application Reviews	100
Miscellaneous Requests & Committee Involvements	57 - 74
TOTAL:	~ 965 per year

*Form 2A oil and gas consultations vary widely from year-to-year based on commodity prices and market conditions that influence permitting for new oil and gas facilities. Since 2009, there have been 5,505 oil and gas wells drilled in SWH in CO.



LIVE LIFE
OUTSIDE

Speak Softly and Carry a Big Stick



“WINS” FOR WILDLIFE

- San Juan USFS Plan (2013)
 - ✓ 1 mile/sq. mile moto route density limit in big game habitats
- BLM White River FO Resource Management Plan Amendment (2015)
 - ✓ O & G disturbance threshold to protect functionality of big game habitats
- BLM Tres Rios FO Resource Management Plan (2015)
 - ✓ O & G density limit to protect functionality of big game habitats
- Rio Grande USFS Plan (2020)
 - ✓ 1 mile/sq. mile moto and non-moto route density limit in big game habitats



LIVE LIFE
OUTSIDE

“WINS” FOR WILDLIFE (cont.)

- BLM Uncompahgre FO Resource Management Plan (2020)
 - ✓ Preparation of WMP for O & G development in big game habitats
- 19 COGCC WMPs covering 734,722 acres, incorporating \$3,351,169 of compensatory mitigation to offset adverse impacts and an additional \$3,749,743 for mule deer, sage-grouse, and habitat research
- BLM statewide “No Surface Occupancy” lease stipulation for SWAs
- Formation of the CO Wildlife and Transportation Alliance
- Process improvements (e.g. increased early coordination on BLM and SLB lease sales, and on any upcoming planning documents)



LIVE LIFE
OUTSIDE

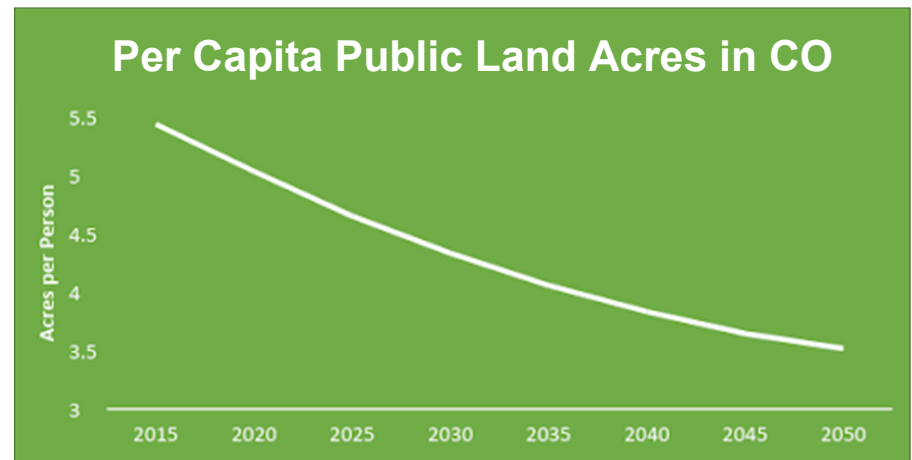
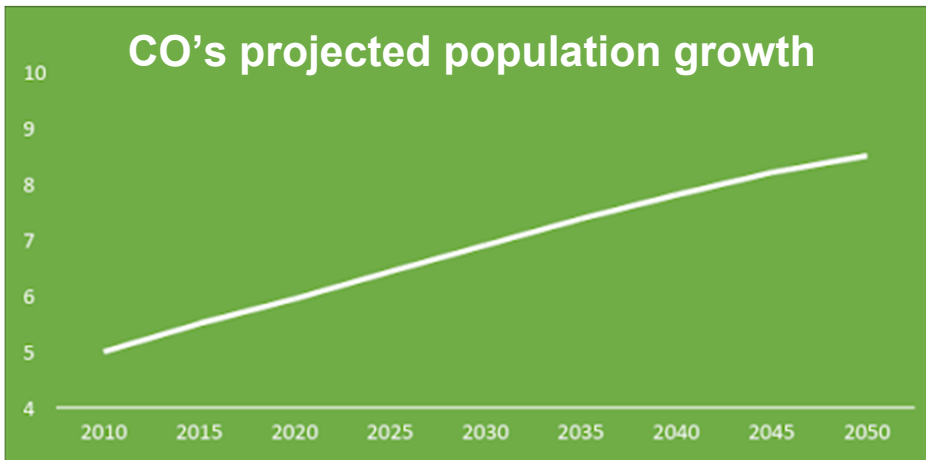
WHAT'S NEXT?

- BLM Royal Gorge FO Resource Management Plan (2020?)
 - ✓ Backcountry Conservation Areas concept
 - ✓ WMP requirement for O & G development in big game habitats
- Grand Mesa, Uncompahgre and Gunnison USFS Plan (2020?)
 - ✓ Wildlife Management Areas concept
 - ✓ Limitations on moto and non-moto route density
- COGCC SB 19-181 implementation with increased protections and compensatory mitigation requirements
- BLM statewide Resource Management Plan Amendment to limit density of facilities/routes in big game habitats



LIVE LIFE
OUTSIDE

COLORADO'S CHALLENGE/OPPORTUNITY



How long
can we
continue to
provide this
opportunity?





QUESTIONS?



LIVE LIFE
OUTSIDE