



Eldorado Canyon State Park Draft Management Plan

Mark Leslie

NE Region Manager

Scott Roush

NE Region Deputy Manager

John Carson

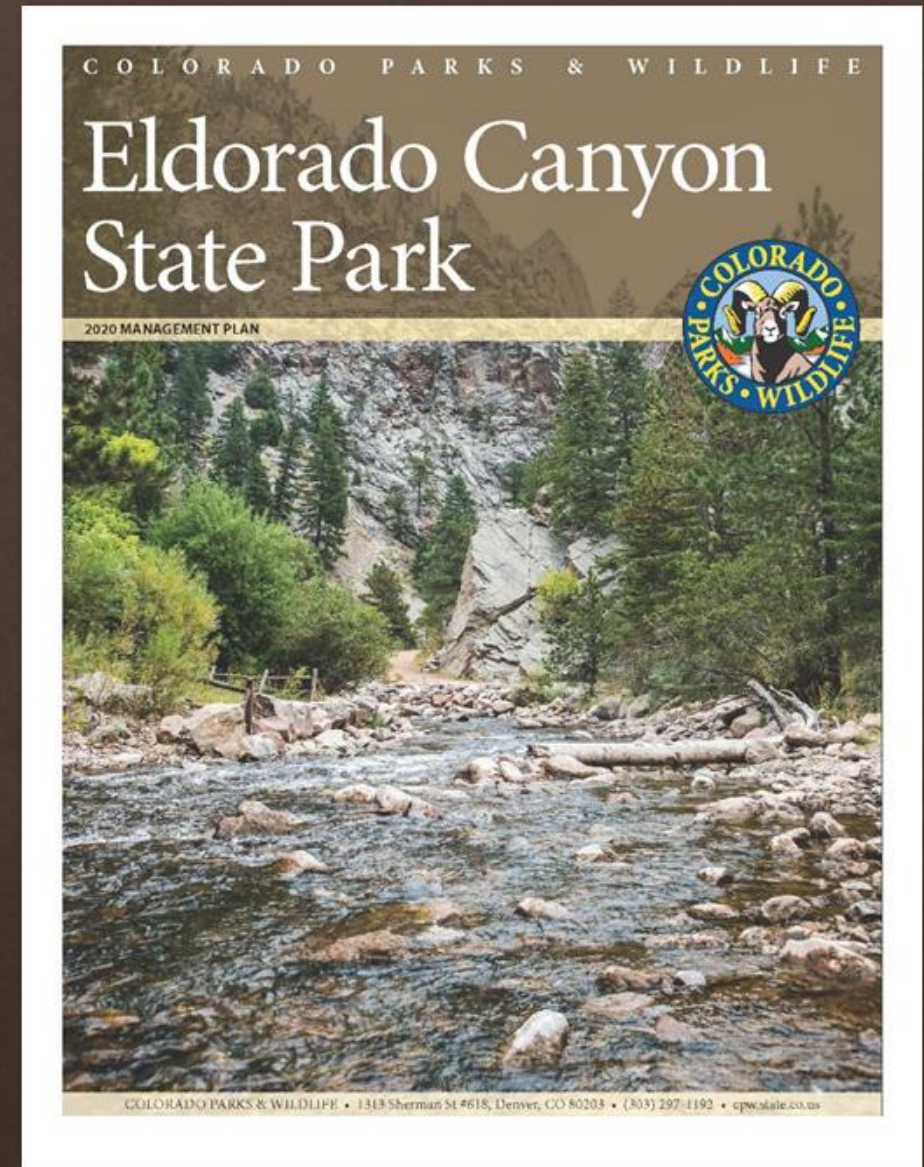
Park Manager

Kacie Miller

Planning Manager

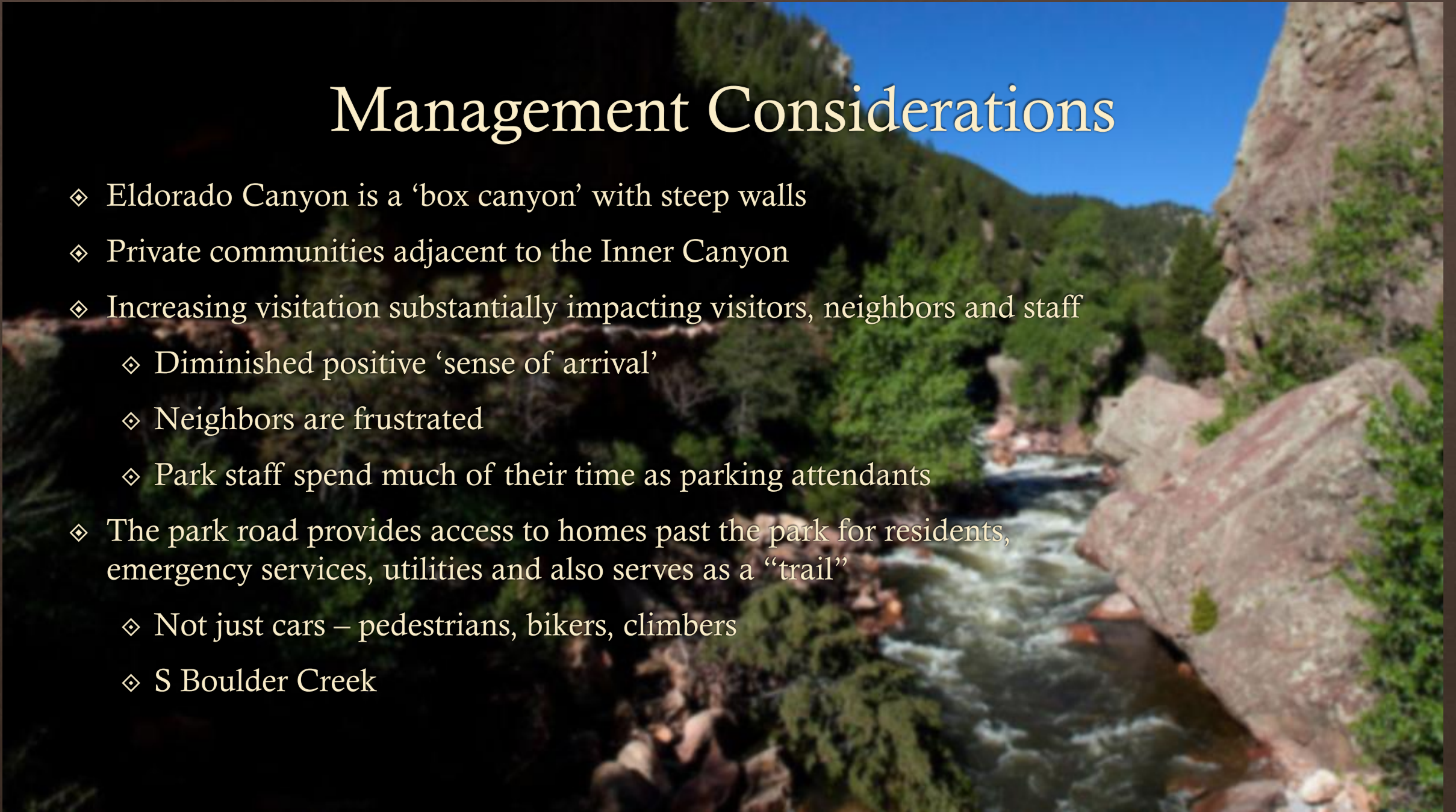
Park Management Plans

- ❖ 10 year plans
- ❖ Outlines short and long term vision for:
 - ❖ visitor experiences,
 - ❖ protection of natural and cultural resources, and
 - ❖ recreation, facilities and other infrastructure management
- ❖ Storehouse of information
- ❖ Proactive decision making

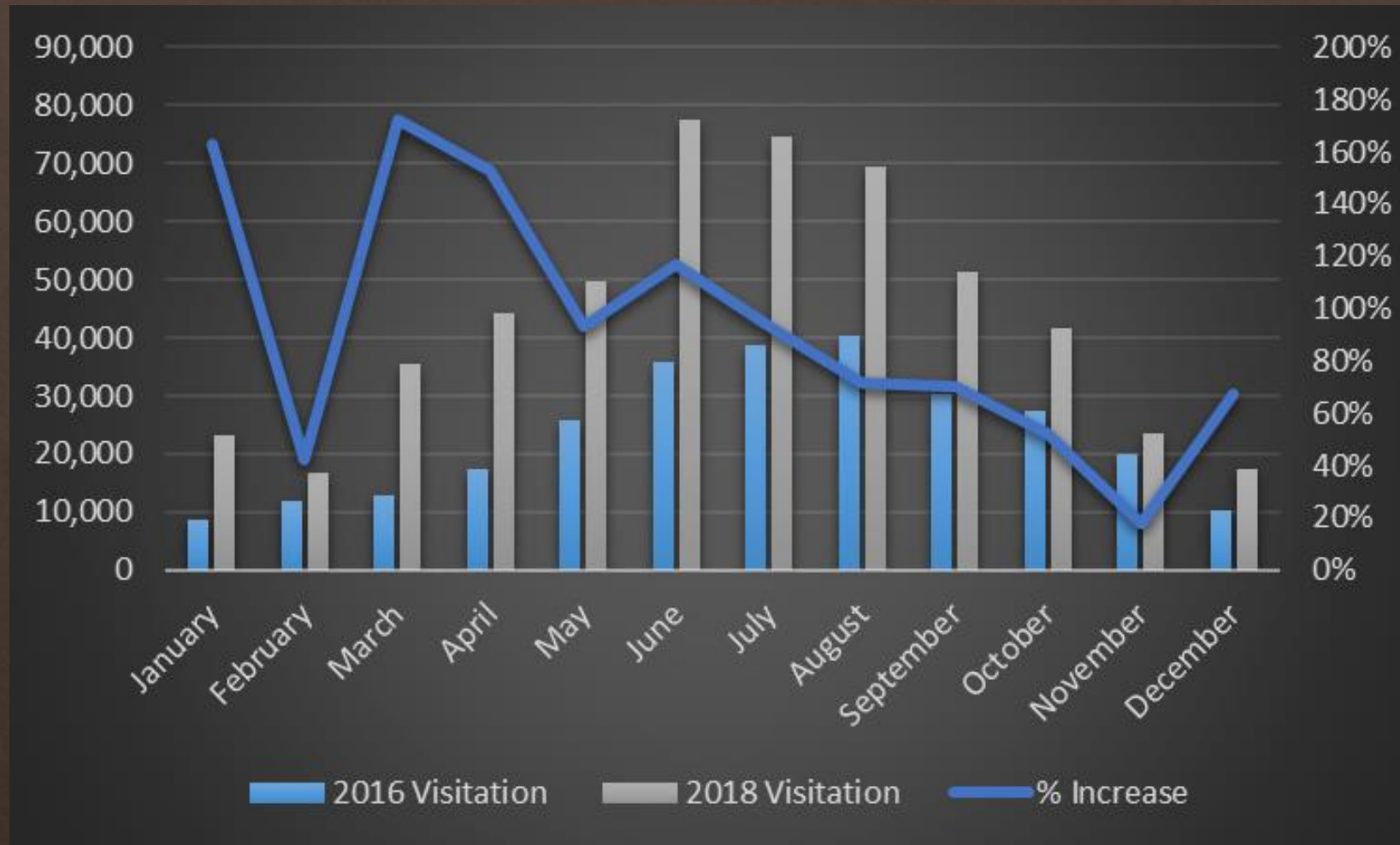


Management Considerations

- ◆ Eldorado Canyon is a 'box canyon' with steep walls
- ◆ Private communities adjacent to the Inner Canyon
- ◆ Increasing visitation substantially impacting visitors, neighbors and staff
 - ◆ Diminished positive 'sense of arrival'
 - ◆ Neighbors are frustrated
 - ◆ Park staff spend much of their time as parking attendants
- ◆ The park road provides access to homes past the park for residents, emergency services, utilities and also serves as a "trail"
 - ◆ Not just cars – pedestrians, bikers, climbers
 - ◆ S Boulder Creek

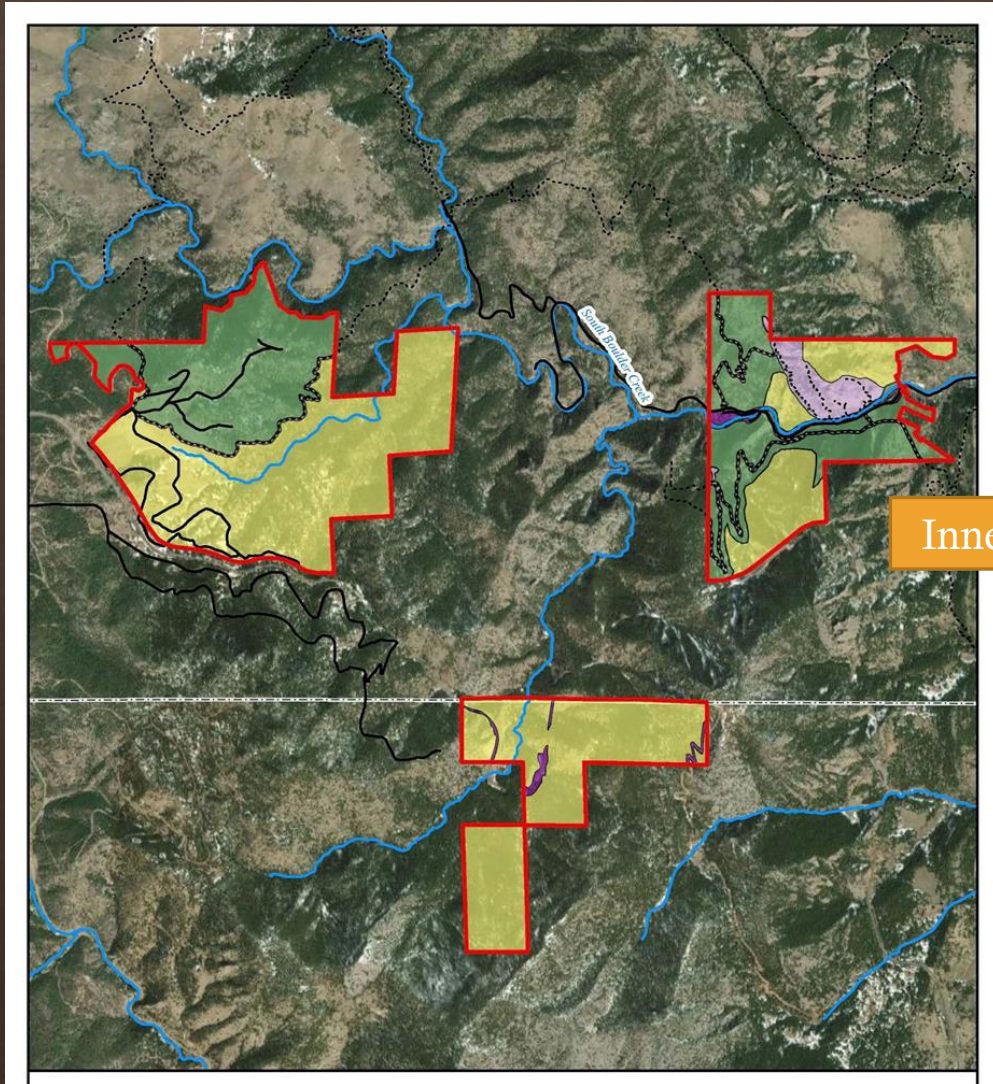


Rising Visitation: Not only in summer!

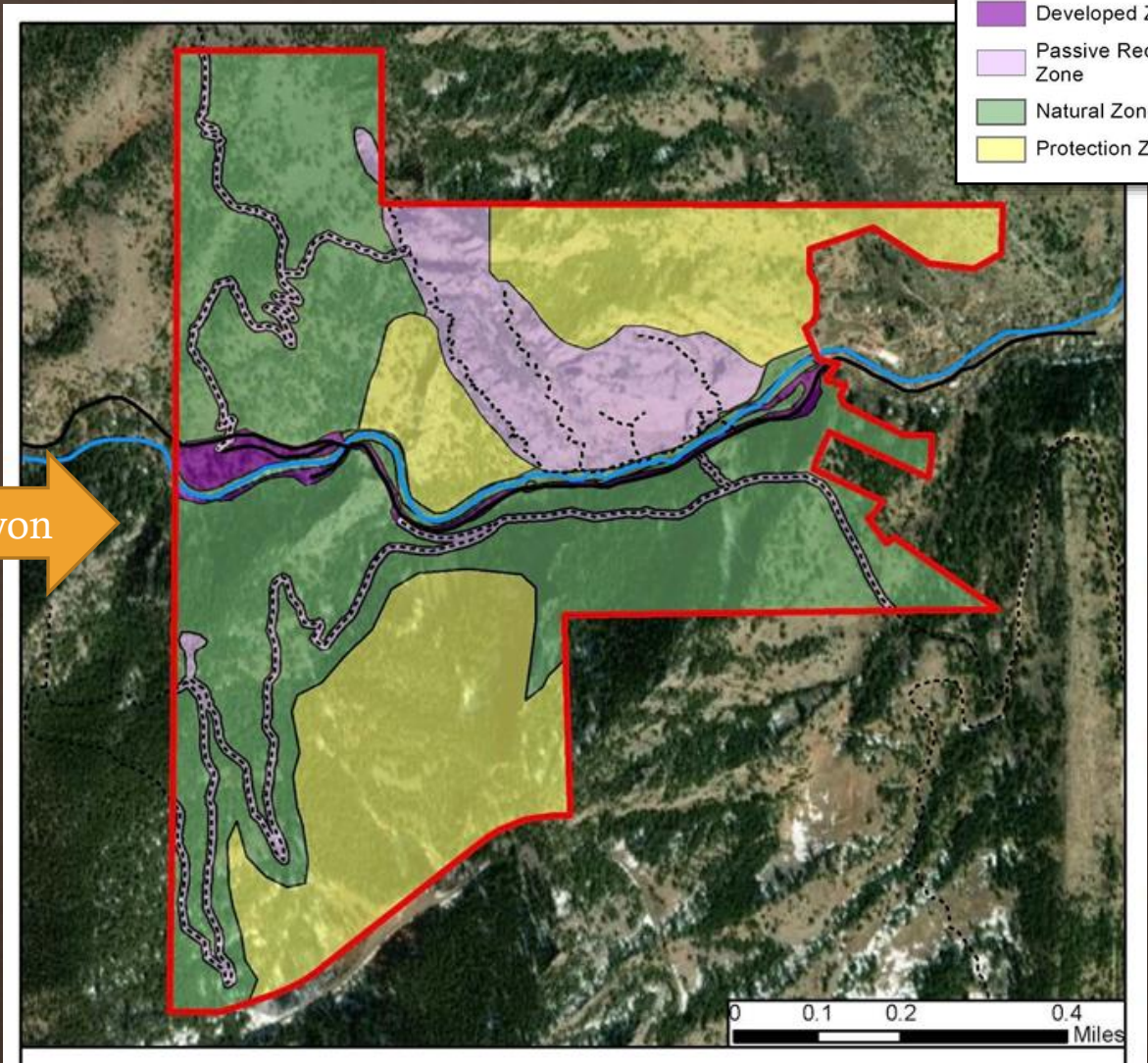




Management Zones



Inner Canyon



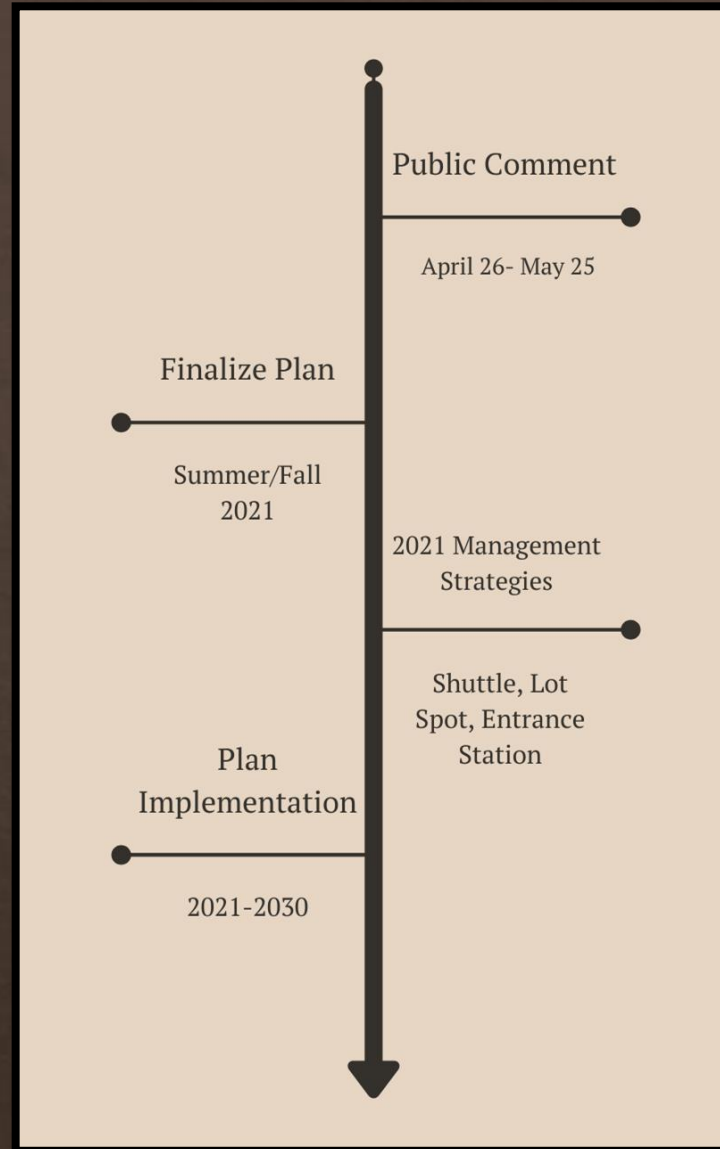
- Park Boundary
- Trails
- Roads
- Streams
- Management Zones**
- Developed Zone
- Passive Recreation Zone
- Natural Zone
- Protection Zone

Parking and Access

- ❖ High priority for short term
- ❖ Continued engagement to ensure equitable access (to process and park)
- ❖ Gradual shifts from each strategy leading to long term change
 - ❖ For access
 - ❖ Support other needs (ex., resource protection)
- ❖ Monitoring effectiveness has to fit with park operations

Strategy	Indicators of Success	Outcomes	Impacts
Trip Planning		Number of days cars are turned around	Improved arrival experience
Parking Data Collection Tool	Awareness, Usage, Influence on Trip Planning	Number of vehicles passing through town	Continued visitor satisfaction
Strategic Communications			
Reservations	Percentage of slots used	Entrance station wait time	Protection for Natural and Cultural Resources
Shuttle	Ridership	Dispersed Visitation	
Site Management			Reduced frustration for neighbors, visitors and staff
Parking spot delineation	Appropriate utilization of all spaces	Webpage/app hits and downloads	Progress in support of Park Goals and towards Desired Future Conditions
Entrance Station redesign	Wait time	Visitor Satisfaction	

What's Next?



Eldorado Canyon State Park Management Plan

Once finalized, the Eldorado Canyon State Park (ECSP) Management Plan will serve as the guiding document for the park by providing a framework for management of park resources and visitor experience.

Provide Feedback on the Draft ESCP Management Plan

Colorado Parks and Wildlife invites you to comment on the draft ESCP plan. The plan is the result of extensive information gathering and collaboration with stakeholders.

Please review the following sections of the plan which highlight key plan components and then fill out the accompanying surveys.

› What information was used to create the draft plan?

› Existing Conditions: What did CPW hear, learn and confirm?

› Proposed Management Approach

Do you want to see the entire draft plan?

- Here is the full [draft ECSP Management Plan](#) PDF.
- Here is the [draft plan appendices \(A-D\)](#) PDF.

Would you like to provide additional comments to CPW?

Please [fill out this survey](#) to give any additional feedback on the plan.

› What information was used to create the draft plan?

Establishing the plan's purpose and Eldorado Canyon State Park's vision and goals helped CPW to determine what information was needed and create the planning process. The plan inputs (information used to craft the draft plan included the Resource Stewardship Plan, and public and partner engagement) are described in Chapter 1.

The resulting Management Plan and its use will lead to results that support the park's vision and goals.

- [Plan Inputs: Chapter 1](#)

› Existing Conditions: What did CPW hear, learn and confirm?

In addition to the inputs summarized in Chapter 1, Chapters 2-4 detail the park's resources (natural, cultural, scenic, recreational, facilities and infrastructure) and visitation trends.

Stakeholders (local residents, recreation and conservation groups, park visitors and more) had important but differing views on the increasing visitation to ESCP and the potential impacts to the community, visitor experience and park resources. The 'perception gaps' in these differing viewpoints needed to be bridged through listening, data gathering and documenting existing conditions.

Please review the information in Chapters 2-4:

- [Park Setting & Resources \(Chapters 2 & 3\)](#)
- [Visitation \(Chapter 4\)](#)

Fill out this survey to give feedback on chapters 2-4.

› Proposed Management Approach

Chapter 5 explores using Management Zones (designated areas within the park) to create a spatial framework for long-term management of the park. Zone types and boundaries are based on "Desired Future Conditions" ([see Chapter 1](#)).

Consider the following questions while reviewing Chapter 5:

- Beyond the timeframe of this plan, what should the park resources, management focus and visitor experience be into the future?
- How did CPW use the inputs? What are we going to do? What are indicators of success for plan implementation?

Please review the information in Chapter 5:

- [Management Zones \(Chapter 5\)](#)

Fill out this survey to give feedback on chapter 5.

Chapter 6 outlines ongoing and new efforts to minimize the impacts of high visitation to neighbors, visitors and staff.

In order to (1) maintain a quality visitor experience, (2) avoid surpassing CPW's ability to maintain the high quality resource conditions in the park, and (3) improve working conditions for staff and volunteers, management strategies in the following focus areas are being considered for implementation:

1. Health, Safety and Staffing
2. Natural and Cultural Resource Protection
3. Communication
4. Access and Parking
5. Trails and Picnic Area
6. Other Facilities and Infrastructure

Please review the information in Chapter 6:

- [Management Strategies \(Chapter 6\)](#)

Fill out this survey to give feedback on chapter 6.

Acknowledgements

- ◆ **Collective Ecological Consulting, SE Group, Keystone Policy Center**
- ◆ **Interagency Team: Boulder County Parks & Open Space, Boulder County Community Planning and Permitting, and City of Boulder Open Space and Mountain Parks**
- ◆ **Task Force:**
 - ◆ **Action Committee for Eldorado • Boulder Area Trail Coalition • Boulder Climbing Community 13 • Boulder County Nature Association • Boulder County Parks & Open Space • Boulder County Community Planning and Permitting • Boulder Mountainbike Alliance • Brown Girls Climb • City of Boulder Open Space & Mountain Parks • Colorado Department of Transportation • Colorado Mountain Club • Colorado Parks & Wildlife • Eldorado "Valley" Residents • Eldorado Artesian Springs, Inc. • Eldorado Springs - east residents • Eldorado Springs - Kneale Road (west residents) • Islamic Center of Boulder • Rising Routes • Rocky Mountain Fire • Rocky Mountain Rescue Group**

