

2021 Black Bear License Recommendations



Parks and Wildlife Commission
May 5-6, 2021
In-person & Virtual Meeting

Mark Vieira- CPW Carnivore and Furbearer Program Manager



LIVE LIFE
OUTSIDE

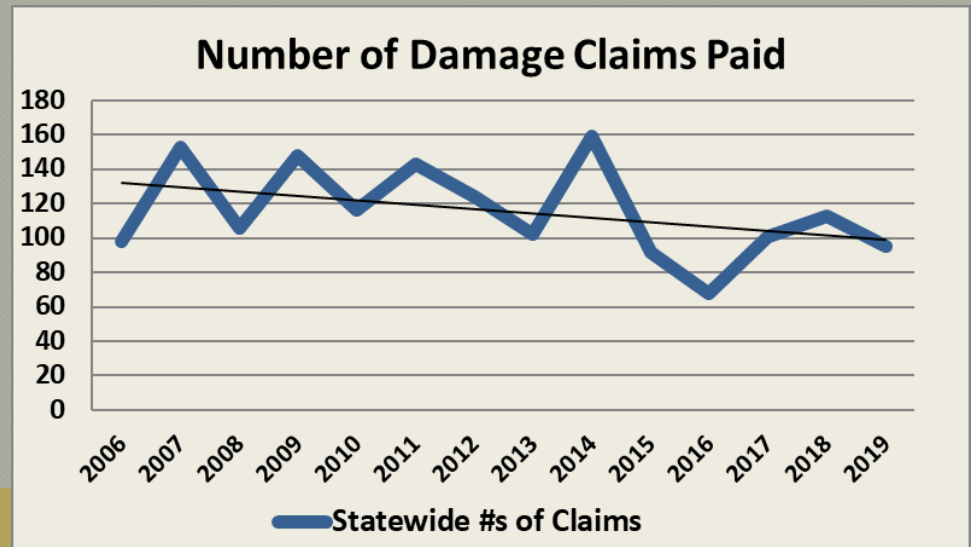
Information Supporting Recommendations

- Harvest Composition (Age Classes & Gender)

Harvest Composition Monitoring Standards			
Age/Gender Class	Decreasing	Stable	Increasing
Adult Male Harvest in All Harvest	< 25%	25-35%	> 35%
Total Female Harvest in All Harvest	> 40%	30-40%	< 30%
Adult Female in Total Female Harvest	> 55%	45-55%	< 45%

- Bear Damage Claims

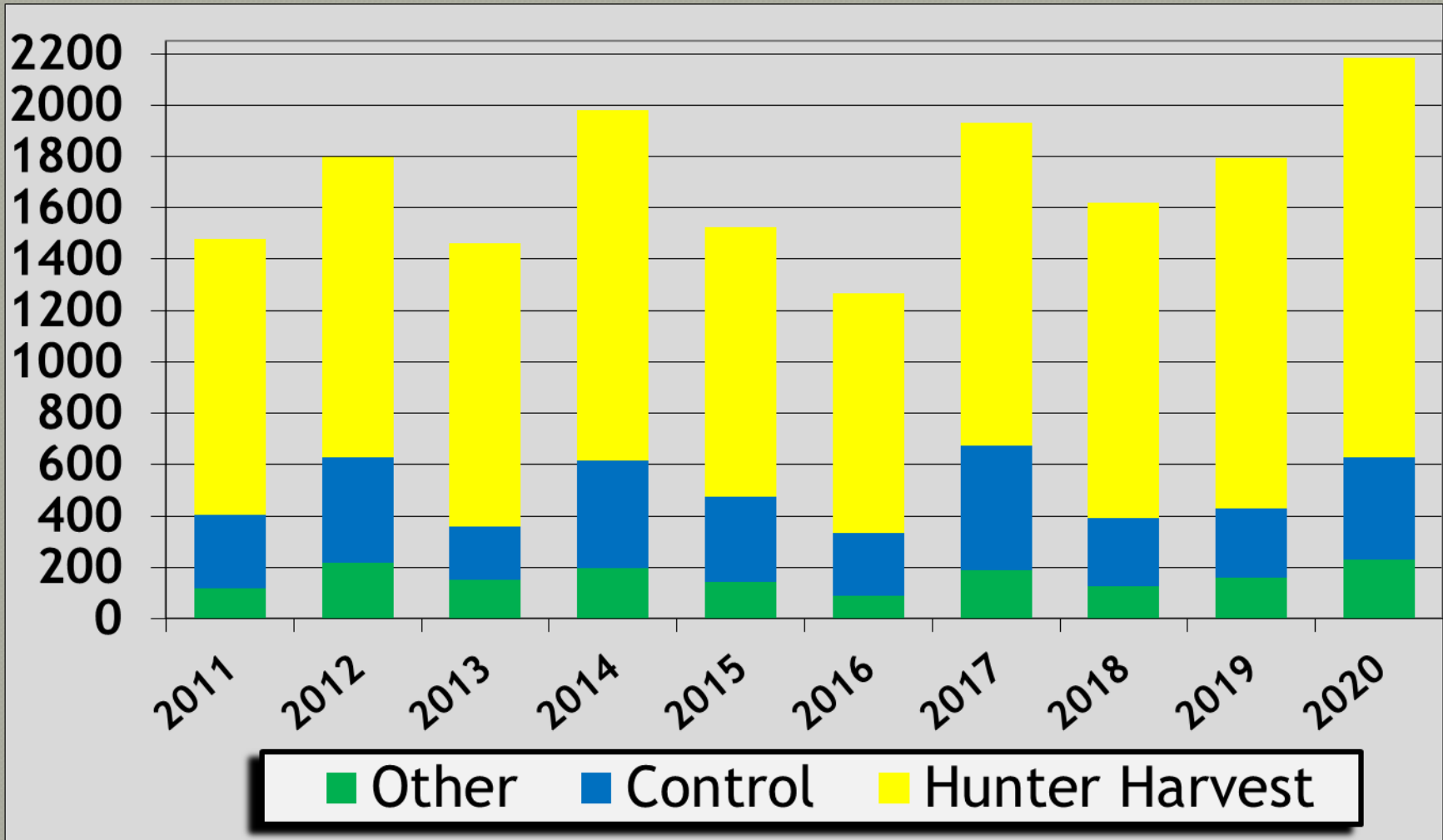
- Human Conflicts and Other Data



LIVE LIFE OUTSIDE

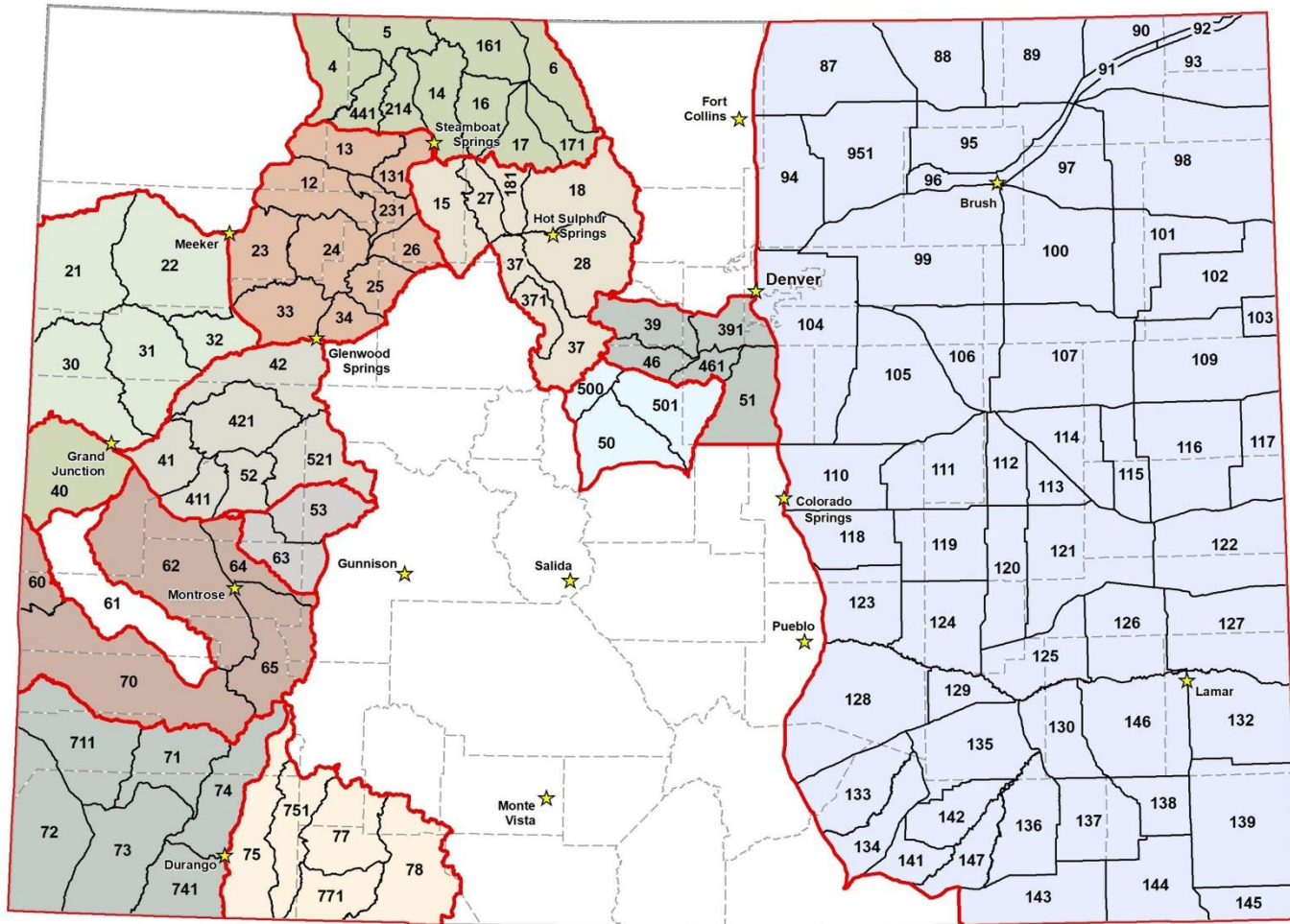
Bear Mortality by Mortality Type

2011-2020



LIVE LIFE
OUTSIDE

2021 Bear Management License Strategy



Units with OTC and OTC Add-on Black Bear Licenses 2021



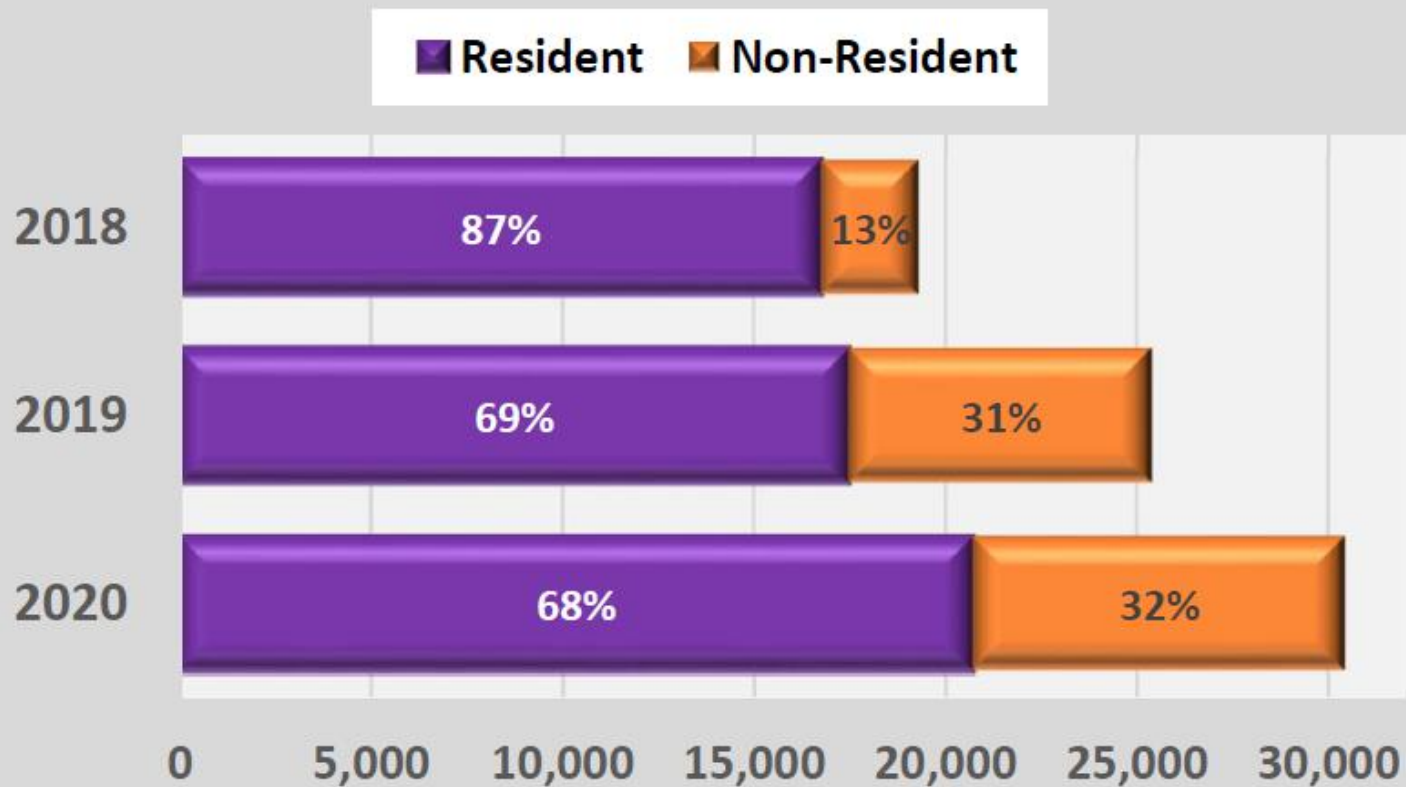
- ★ CPW offices
- Only limited licenses available
- ▭ Grouped units boundary

Units shaded the same color are part of the same unit grouping. See the archery, muzzleloader and rifle tables.



NR Fee Reduction (2019) and BGSS OTC Opportunities (2020)

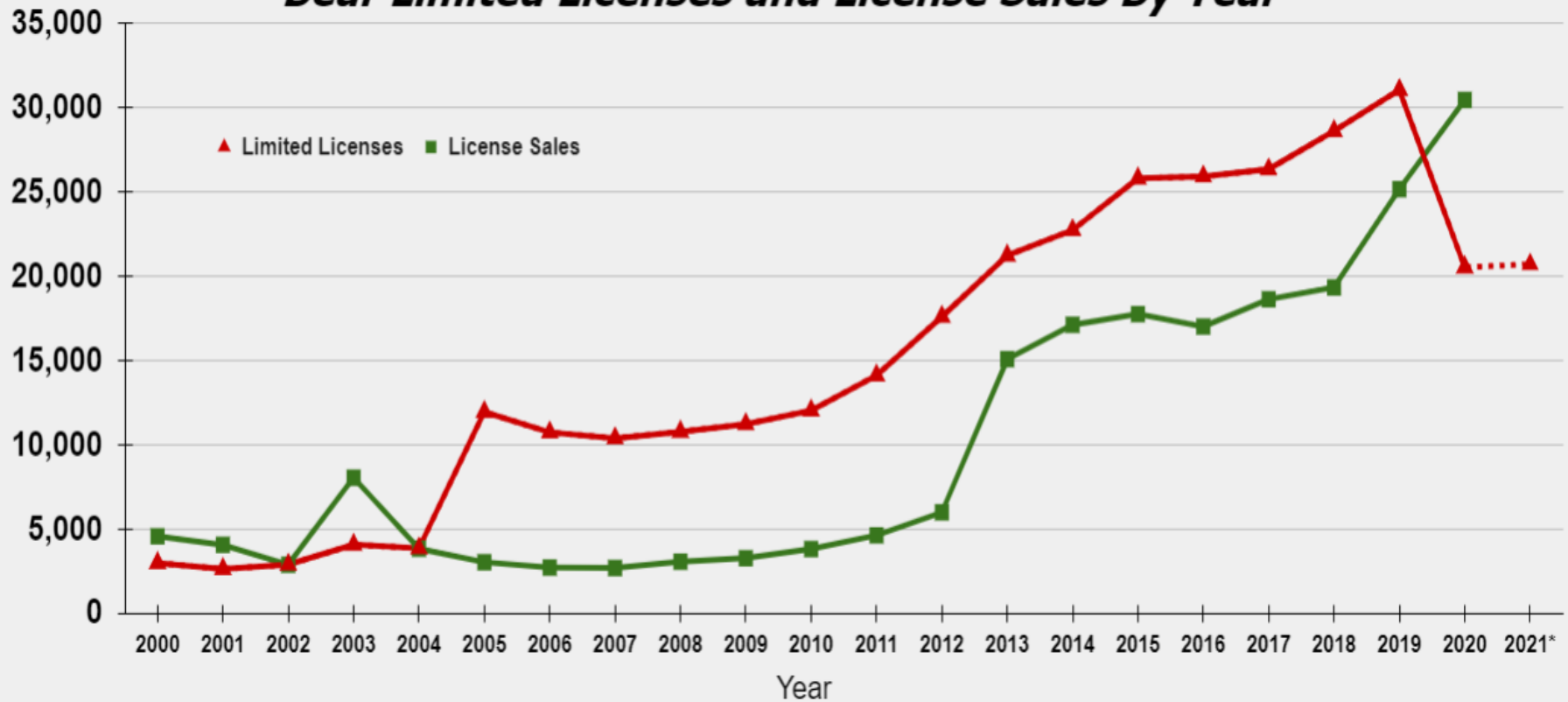
Total Bear License Sales



LIVE LIFE
OUTSIDE

License History

Bear Limited Licenses and License Sales By Year



**2021 quota recommendation is 20,700 limited licenses
(+1% from 2020)**



LIVE LIFE
OUTSIDE