

## ISSUES SUBMITTAL FORM

Date: 10/13/2021	
<b>ISSUE:</b>	<b>Should five preference point or more licenses and public Ranching for Wildlife licenses returned or not paid for in the Primary Draw be excluded from the Secondary Draw?</b>
<b>DISCUSSION (FACTS AND FIGURES, EXPLANATION OF ISSUE):</b>	
<p>Regulation W-2 Article I, #206 B(7)(a) states that elk, deer, pronghorn, and bear licenses which are not issued through the regular drawing will be issued through a secondary drawing process if the number of remaining licenses is sufficient to justify the administrative cost. Each year Primary Draw licenses that are not paid for (i.e. failed-to-pay licenses) include licenses that qualify for manual reissue (those licenses that required five or more points to draw in the Primary Draw and Ranching For Wildlife (RFW) licenses). Chapter W-16 Article IV #1670 A(9)(a) &amp; (c) states all licenses that require 5 or more points and all RFW licenses will be reissued by the Division manually. These two regulations currently conflict. Manually reissuing licenses encourages the use of points for high demand licenses, which helps with point creep. Additionally, the Secondary Draw occurs too late in the calendar for CPW to inform the RFW ranches in a timely manner of hunters who drew a public RFW license, as required per the RFW contracts.</p> <p>Since its inception in 2020, the Secondary Draw has not included licenses that qualify for manual reissue, unless none of the next five unsuccessful applicants from the limited draw order accepted the manual reissue. Therefore modifying Chapter W-2 to align with Chapter W-16 will not change current established practices, but will ensure the two regulations do not conflict with each other.</p> <p>Additionally, as a part of this W-2 issue paper, all previous references to a leftover draw should be removed as the leftover draw was replaced with a Secondary Draw in 2020.</p>	
<b>STATE LAW REQUIRES CPW TO SOLICIT INPUT FROM STAKEHOLDERS THAT MAY BE AFFECTED POSITIVELY OR NEGATIVELY BY THE PROPOSED RULES. THE FOLLOWING STAKEHOLDERS HAVE BEEN ADVISED OF AND INVITED TO PROVIDE INPUT ON THE REGULATORY CHANGES PROPOSED IN THIS ISSUE PAPER:</b>	
<b>*IT IS ASSUMED THAT ALL NECESSARY INTERNAL PARTIES HAVE BEEN NOTIFIED*.</b>	
All public big game hunters, particularly those that apply in the Secondary Draw. This proposed regulatory change does not change system processes, just clarifies the process regarding which unpaid licenses will be included in the Secondary Draw.	
<b>ALTERNATIVES: (POSSIBLE OUTCOMES or POSSIBLE REGULATIONS):</b>	
<ol style="list-style-type: none"> <li>1. <b>Preferred Alternative*</b>. Modify W-2 Article I, #206 B(7)(a) to exclude any licenses that required five or more resident preference points to draw and all RFW licenses from being included in the Secondary Draw unless the next five unsuccessful applicants on the limited draw order refused to accept the manual reissue prior to the opening of the Secondary Draw application period.</li> <li>2. Status Quo. No change.</li> </ol>	
<b>Issue Raised by:</b>	<b>LRCO Section</b>
<b>Author of the issue paper (if different than person raising the issue):</b>	<b>Danielle Isenhart and Mike Lloyd</b>
<b>CC:</b>	
<b>APPROVED FOR FURTHER CONSIDERATION BY:</b>	<b>Danielle Isenhart</b>
<b>REQUIRES NEW SPACE IN THE BROCHURE?</b>	<b>X YES <input type="checkbox"/> NO</b>
<b>ARE ADEQUATE STAFF AND FUNDING RESOURCES AVAILABLE TO IMPLEMENT?</b>	<b>X YES <input type="checkbox"/> NO</b>

REGION, BRANCH, OR SECTION LEADING IMPLEMENTATION	LRCO
RECOMMENDED FOR CONSENT AGENDA?	X YES NO

## ISSUES SUBMITTAL FORM

Date:

10/13/2021

<b>ISSUE:</b>	<b>Should regulation #206.B.4.d.1 be modified to clarify that youth only hunt codes also fall into the youth preference draw and the same hunt code choice stipulations for youth preference apply?</b>
<b>DISCUSSION (FACTS AND FIGURES, EXPLANATION OF ISSUE):</b>	
<p>Colorado Parks and Wildlife's primary big game drawing has two preference systems, landowner preference and youth preference. To issue limited licenses and accommodate these preferences, the draw is broken out into three sections. The landowner preference allocation is drawn out first, followed by the youth preference allocation. Any licenses remaining after these two drawings feed into the general Primary Draw.</p> <p>The license system sorts applications by species and preference before running the draw. In preparation for the youth preference draw, the system checks whether all hunt codes entered on each youth application are eligible for youth preference. If any hunt codes entered are not eligible for youth preference, the system kicks that application out of the youth preference drawing and moves it into the general Primary Draw. Although this hunt code stipulation is mentioned in the brochures under youth preference and codified in regulation #206.B.4.d.1., youth applications occasionally include ineligible hunt codes. Consequently, there are instances where youth with fewer preference points draw a license (application eligible for youth preference draw) over youth with more preference points competing for the same hunt code (application ineligible for youth preference draw).</p> <p>Hunt codes that are eligible for youth preference are defined in regulation as <i>any limited doe pronghorn, limited either-sex or antlerless deer, and limited antlerless elk license established for each GMU, except for public Ranching for Wildlife or Air Force Academy licenses</i>. Besides these youth preference eligible hunt codes, the only other hunt codes that are issued in the youth preference drawing are <b><u>all youth only hunt codes</u></b>. However, regulation #206.B.4.D does not mention anything related to youth only hunt codes.</p> <p>After the 2021 Draw Recap Reports were published, several customers realized other youth applicants with fewer preference points drew the license they applied for, so they contacted CPW. Customers pointed out that the hunt code they applied for was not eligible for youth preference as they were either-sex elk or Ranching for Wildlife, and argued that regulation #206.B.4.D does not apply to them (hunt codes were EE851K3R, EE851W4R, EF085W2R and EF005W1R). The customers are correct in that neither the regulation nor the brochure mentions this stipulation applying to youth only hunt codes.</p> <p>To correct this discrepancy, this issue paper proposes adding "youth only hunt codes, including youth only RFW licenses" to regulation #206.B.4.d.1 (as proposed in the preferred alternative) as well as clarify this application requirement in the Big Game brochure. This regulatory change is administrative in nature, but will provide clarification to customers on these stipulations moving forward, particularly as more youth only hunt codes are approved.</p>	
<b>STATE LAW REQUIRES CPW TO SOLICIT INPUT FROM STAKEHOLDERS THAT MAY BE AFFECTED POSITIVELY OR NEGATIVELY BY THE PROPOSED RULES. THE FOLLOWING STAKEHOLDERS HAVE BEEN ADVISED OF AND INVITED TO PROVIDE INPUT ON THE REGULATORY CHANGES PROPOSED IN THIS ISSUE PAPER:</b>	
<b>*IT IS ASSUMED THAT ALL NECESSARY INTERNAL PARTIES HAVE BEEN NOTIFIED*.</b>	
Youth big game applicants. This proposed regulatory change does not change system processes, just clarifies this requirement/stipulation for youth applicants who are applying for youth only hunt codes.	
<b>ALTERNATIVES: (POSSIBLE OUTCOMES or POSSIBLE REGULATIONS):</b>	

1. **\*Preferred Alternative\***: Any eligible hunter, ages 12-17 is entitled to youth hunt preference for all seasons and methods of take for the license types listed in the preceding paragraph, except that public, non-youth only Ranching for Wildlife and Air Force Academy licenses shall not be included in this preference. The applicant must submit an individual application for the desired, eligible license on forms provided by the Division. Group applications will not be accepted for youth preference. Where more than one (1) hunt code choice is shown on the application, all hunt codes must be youth preference-eligible hunt codes or youth only hunt codes.
2. Status Quo. Not recommended in order to administratively run the youth preference draw with youth only hunt codes.

<b>Issue Raised by:</b>	<b>Danielle Isenhart</b>
<b>Author of the issue paper (if different than person raising the issue):</b>	
<b>CC:</b>	<b>Lauren Truitt, John Frano, Brian Dreher, Matt Eckert</b>
<b>APPROVED FOR FURTHER CONSIDERATION BY:</b>	<b>Lauren Truitt</b>
<b>REQUIRES NEW SPACE IN THE BROCHURE?</b>	<input checked="" type="checkbox"/> YES <input type="checkbox"/> NO
<b>ARE ADEQUATE STAFF AND FUNDING RESOURCES AVAILABLE TO IMPLEMENT?</b>	<input checked="" type="checkbox"/> YES <input type="checkbox"/> NO
<b>REGION, BRANCH, OR SECTION LEADING IMPLEMENTATION</b>	<b>LICR</b>
<b>RECOMMENDED FOR CONSENT AGENDA?</b>	<input checked="" type="checkbox"/> YES <input type="checkbox"/> NO

## ISSUES SUBMITTAL FORM

Date: 10/13/2021

**ISSUE:** Should Game Management Units (22, 23, 211, 11, 12, 13, 3, 301, 4, 32 and 33) boundary descriptions be modified?

### DISCUSSION (FACTS AND FIGURES, EXPLANATION OF ISSUE):

Currently there are several wording issues in the boundary descriptions in many of the Area 6 Game Management Units (GMU). There is a GMU overlap between GMU 211 and GMU 23. Many GMU boundaries (22, 23, 211, 12, 13, 3, 301 and 4) use old highway numbers (Colo. 13/789) that are no longer in use. The boundary between GMUs 11 and 211 uses common names for roads instead of using county road numbers.

#### **GMU 23 and 211 boundary overlap:**

Currently there is an overlap between GMU 211 and 23. GMU 211's southern boundary is the White River and GMU 23's northwest boundary is Colo. Highway 13. The land that lies North of the White River and South of Colorado Highway 13 currently falls within the boundary description of both GMU 211 and GMU 23.

Currently the 211 GMU boundary description reads: *bounded on N by U.S. 40 and Yampa River; on E by Colo. 13/789; on S by White River; on W by Strawberry Creek-Deception Creek Rd.*

The GMU 23 boundary description reads: *bounded on N by Rio Blanco CRs 30, 15 & 48 and USFS 250; on E by USFS 250, Rio Blanco CRs 8 & 17 and USFS Primary Forest Rd. 245 (Buford-Newcastle Rd.); on S by White River-Colorado River divide; on W by Colo. 13/789.*

Staff recommends that the boundary description for GMU 211 be changed to Colo 64 and Colo. 13 so there is no longer an overlap between two units. GMU 23 West boundary would stay as Colo. 13.

(See New boundary Descriptions Below)

#### **Remove Colo. 13/789 from GMU descriptions in GMUs 22, 23, 211, 12, 13, 3, 301, 4, 32 and 33 and replace with Colo. 13:**

Currently all units bounded by Colo. Highway 13 are described as Colo. 13/789. Highway 789 is the highway that runs North from the Colorado Wyoming boarder to I-80. There are no road signs along Colo. 13 that refer to it as 789. To clarify the unit boundaries, staff recommends removing the 789 from the Colo. 13 descriptions in GMUs 22, 23, 211, 12, 13, 3, 301, 4, 32 and 33..

#### **Clarify the GMU boundary between 11 and 211 using county roads:**

Currently the boundary between GMUs 11 and 211 is the Deception Creek-Strawberry Creek Road. The Deception Creek-Strawberry Creek Roads are Rio Blanco County Rd. 7 and Moffat County Rd. 57. To make the language consistent with other GMU boundaries and to clarify the boundary for the public, staff recommends using county roads and changing the use of Deception Creek-Strawberry Creek Rd to Rio Blanco County Rd. 7 and Moffat County Rd. 57.

#### **Change south boundary of GMU 211:**

Currently the western boundary of GMU 211 is the Deception Creek-Strawberry Creek Rd (Rio Blanco County Rd 7 and Moffat County Rd 57) and the southern boundary is the White River. Rio Blanco County Rd 7 (Strawberry Creek) does not touch the White River and there is no definable boundary between the county road and the river. Staff recommends adding Colo. Highway 64 to Colo. Highway 13 as the new southern boundary for GMU 211 so that the western boundary (CR 7) touches the southern boundary (Colo. 64).

### **New GMU Boundary Descriptions**

Staff Recommends the following changes:

**GMU 22:** Remove the use of Colo. 13/789 and replace with Colo. 13

- Bounded on N by White River; **on E by Colo. 13**; on S by White River-Colorado River divide; on W by Rio Blanco CRs 26 & 103, Monument Gulch Road., Colo. 64 and Monument Gulch.

**GMU 23:** Remove the use of Colo. 13/789 and replace with Colo. 13.

- Bounded on N by Rio Blanco CRs 30, 15 & 48 and USFS 250; on E by USFS 250, Rio Blanco CRs 8 & 17 and USFS Primary Forest Rd. 245 (Buford-Newcastle Rd.); on S by White River-Colorado River divide; **on W by Colo. 13.**

**GMU 211:** Remove the use of Colo. 13/789 and replace with Colo. 13. Change south boundary from the White River to Colo. 13 so there is no longer an overlap with GMU 23. Include Colo. 64 in the south boundary. Change west boundary description from Deception Creek-Strawberry Creek Road to Rio Blanco County Road 7 and Moffat County Road 57.

- Bounded on N by U.S. 40 and Yampa River, **on E by Colo. 13; on S by Colo. 13 and Colo. 64; on W by Rio Blanco CR 7 and Moffat CR 57.**

**GMU 12:** Remove the use of Colo. 13/789 and replace with Colo. 13.

- Bounded on N by Colo. 317, Routt CRs 29 & 55, Rio Blanco CRs 10 & 8; on E by Williams Fork-Yampa River divide; on S by Williams Fork-White River divide, USFS 250 and Rio Blanco CRs 48, 15 & 30; **on W by Colo. 13.**

**GMU 13:** Remove the use of Colo. 13/789 and replace with Colo. 13.

- Bounded on N by U.S. 40; on E by Routt CR 179, Trout Creek, Fish Creek; on S by Routt CR 29 and Colo. 317; **on W by Colo. 13.**

**GMU 3:** Remove the use of Colo. 13/789 and replace with Colo. 13.

- Bounded on N by WY; **on E by Colo. 13** and CRs 108, 3, 5 & 17; on S by Yampa River, U.S. 40 and Colo. 318; on W by Little Snake River.

**GMU 301:** Remove the use of Colo. 13/789 and replace with Colo. 13.

- Bounded on N by CRs 5, 3 & 108; **on E by Colo. 13**; on S by Yampa River; on W by CR 17.

**GMU 4:** Remove the use of Colo. 13/789 and replace with Colo. 13.

- Bounded on N by WY; on E by Moffat CR1, Routt CR 82, USFS 150 and Elkhead Creek; on S by U.S. 40; **on W by Colo. 13.**

**GMU 11:** Change the east boundary from Deception Creek-Strawberry Creek Road to Rio Blanco County Road 7 and Moffat County Road 57.

- Bounded on N by Colo. 318 and U.S. 40; **on E by Moffat CR 57 and Rio Blanco CR 7**; on S by White River; on W by Wolf Creek, Coal Creek, Winter Valley Gulch to Drill Hole to Elk Springs Ridge to mile marker 38.8 on U.S. 40, Twelvemile Gulch Rd., Yampa River and Little Snake River.

**GMU 32:** Remove the use of Colo. 13/789 and replace with Colo. 13.

- Bounded on N by Parachute Creek-Piceance Creek divide; **on E by Colo 13**; on S by Colorado River; on W by Kelly Gulch and Roan Creek-Parachute Creek divide.

**GMU 33:** Remove the use of Colo. 13/789 and replace with Colo. 13.

- Bounded on N by White River-Colorado River divide; on E by Canyon Creek; on S by Colorado River; **on W by Colo 13**.

**STATE LAW REQUIRES CPW TO SOLICIT INPUT FROM STAKEHOLDERS THAT MAY BE AFFECTED POSITIVELY OR NEGATIVELY BY THE PROPOSED RULES. THE FOLLOWING STAKEHOLDERS HAVE BEEN ADVISED OF AND INVITED TO PROVIDE INPUT ON THE REGULATORY CHANGES PROPOSED IN THIS ISSUE PAPER:**

**\*IT IS ASSUMED THAT ALL NECESSARY INTERNAL PARTIES HAVE BEEN NOTIFIED\*.**

Landowners who have land between the White River and Colo. 13 on the boundary of GMU 211 and 23. These landowners have property that falls within the boundaries of two GMUs and they wanted clarification on which licenses were valid on the property between the river and the highway.

**ALTERNATIVES: (POSSIBLE OUTCOMES or POSSIBLE REGULATIONS):**

**1. \*Preferred Alternative\*: Change unit boundary descriptions as follows:**

GMU 22: Remove the use of Colo. 13/789 and replace with Colo. 13

- Bounded on N by White River; **on E by Colo. 13**; on S by White River-Colorado River divide; on W by Rio Blanco CRs 26 & 103, Monument Gulch Road., Colo. 64 and Monument Gulch.

GMU 23: Remove the use of Colo. 13/789 and replace with Colo. 13.

Bounded on N by Rio Blanco CRs 30, 15 & 48 and USFS 250; on E by USFS 250, Rio Blanco CRs 8 & 17 and USFS Primary Forest Rd. 245 (Buford-Newcastle Rd.); on S by White River-

- Colorado River divide; **on W by Colo. 13**.

GMU 211: Remove the use of Colo. 13/789 and replace with Colo. 13. Change south boundary from the White River to Colo. 13 so there is no longer an overlap with GMU 23. Include Colo. 64 in the south boundary. Change west boundary description from Deception Creek-Strawberry Creek Road to Rio Blanco County Road 7 and Moffat County Road 57.

- Bounded on N by U.S. 40 and Yampa River, **on E by Colo. 13; on S by Colo. 13 and Colo. 64; on W by Rio Blanco CR 7 and Moffat CR 57**.

GMU 12: Remove the use of Colo. 13/789 and replace with Colo. 13.

- Bounded on N by Colo. 317, Routt CRs 29 & 55, Rio Blanco CRs 10 & 8; on E by Williams Fork-Yampa River divide; on S by Williams Fork-White River divide, USFS 250 and Rio Blanco CRs 48, 15 & 30; **on W by Colo. 13**.

GMU 13: Remove the use of Colo. 13/789 and replace with Colo. 13.

- Bounded on N by U.S. 40; on E by Routt CR 179, Trout Creek, Fish Creek; on S by Routt CR 29 and Colo. 317; *on W by Colo. 13.*

GMU 3: Remove the use of Colo. 13/789 and replace with Colo. 13.

- Bounded on N by WY; *on E by Colo. 13* and CRs 108,3,5 &17; on S by Yampa River, U.S. 40 and Colo. 318; on W by Little Snake River.

GMU 301: Remove the use of Colo. 13/789 and replace with Colo. 13.

- Bounded on N by CRs 5,3 & 108; *on E by Colo. 13*; on S by Yampa River; on W by CR 17.

GMU 4: Remove the use of Colo. 13/789 and replace with Colo. 13.

- Bounded on N by WY; on E by Moffat CR1, Routt CR 82, USFS 150 and Elkhead Creek; on S by U.S. 40; *on W by Colo. 13.*

GMU 11: Change the east boundary from Deception Creek-Strawberry Creek Road to Rio Blanco County Road 7 and Moffat County Road 57.

- Bounded on N by Colo. 318 and U.S. 40; *on E by Moffat CR 57 and Rio Blanco CR 7*; on S by White River; on W by Wolf Creek, Coal Creek, Winter Valley Gulch to Drill Hole to Elk Springs Ridge to mile marker 38.8 on U.S. 40, Twelvemile Gulch Rd., Yampa River and Little Snake River.

GMU 32: Remove the use of Colo. 13/789 and replace with Colo. 13.

- Bounded on N by Parachute Creek-Piceance Creek divide; *on E by Colo 13*; on S by Colorado River; on W by Kelly Gulch and Roan Creek-Parachute Creek divide.

GMU 33: Remove the use of Colo. 13/789 and replace with Colo. 13.

- Bounded on N by White River-Colorado River divide; on E by Canyon Creek; on S by Colorado River; *on W by Colo 13.*

## 2. Status Quo

<b>Issue Raised by:</b>	<b>Area 6 DWM Ross McGee</b>
<b>Author of the issue paper (if different than person raising the issue):</b>	
<b>CC:</b>	<b>Area 6 AWM Bill deVergie, A6 AAWM Mike Swaro, Terrestrial Biologist Darby Finley, A6 DWM Bailey Franklin, A6 DWM Tom Knowles, JT Romatzke, Brad Banulis, Matt Kanode</b>
<b>APPROVED FOR FURTHER CONSIDERATION BY:</b>	<b>NW Region</b>
<b>REQUIRES NEW SPACE IN THE BROCHURE?</b>	<b>X YES <input type="checkbox"/> NO</b>
<b>ARE ADEQUATE STAFF AND FUNDING RESOURCES AVAILABLE TO IMPLEMENT?</b>	<b>X YES <input type="checkbox"/> NO</b>
<b>REGION, BRANCH, OR SECTION LEADING IMPLEMENTATION</b>	<b>NW Region</b>
<b>RECOMMENDED FOR CONSENT AGENDA?</b>	<b>X YES <input type="checkbox"/> NO</b>



## ISSUES SUBMITTAL FORM

Date: 10/13/2021

**ISSUE:** Update verbiage in regulation W-2 257.5 – C Units 80, 82, and 83 – San Luis Valley US Fish and Wildlife Refuge Permits.

**DISCUSSION (FACTS AND FIGURES, EXPLANATION OF ISSUE):**

**History:**

Starting in 2016, the United States Fish and Wildlife Service (USFWS) began allowing a limited number of elk hunters access to hunt on the Alamosa, Baca, and Monte Vista National Wildlife Refuges. In order for hunters to be eligible for an access permit, they must have a valid elk license in either Game Management Units (GMU) 80, 82, or 83 for the respective refuge:

In 2017, the Baca National Wildlife Refuge no longer required an access permit for hunting elk on the Refuge. Hunters possessing an elk license valid for the public land portions of GMU 82 may hunt elk on the Refuge.

To be entered into the drawing for the Alamosa and Monte Vista Refuges, eligible hunters must send an email to [montevista.wildlife@state.co.us](mailto:montevista.wildlife@state.co.us) for directions on the application process. Entries are accepted the day after left-over license day and are accepted for five days. After the application period ends, a random drawing is performed for each refuge by the area wildlife manager. Successful applicants are notified via email.

Currently, the regulation reads as:

**C. Units 80, 82, and 83 – San Luis Valley US Fish and Wildlife Refuge Permits**

1. Starting in 2016, the United States Fish and Wildlife Service (USFWS) will allow a limited number of elk hunters access to hunt on the Alamosa, Baca, and Monte Vista National Wildlife Refuges. To be eligible for an access permit, hunters must hold one of the following elk licenses in either GMU 80, 82, or 83:

- a. Either-sex archery;
- b. Antlered muzzleloader;
- c. Antlered or either-sex first rifle;
- d. Antlered or either-sex fourth rifle;
- e. Any limited antlerless license.

2. To be entered into the drawing, eligible hunters must email the following address starting the day after left-over license day: [montevista.wildlife@state.co.us](mailto:montevista.wildlife@state.co.us). Emailed entries will only be accepted for five days after left-over license day. Permits for these three refuges will then be issued at the Monte Vista Service Center via a random drawing on August 15, 2018, held under the direct supervision of the area wildlife manager.

**Proposal:**

To update the verbiage of the regulation to accurately depict the revised process of applying for and issuance of the Alamosa and Monte Vista National Wildlife Refuge access permit.

**STATE LAW REQUIRES CPW TO SOLICIT INPUT FROM STAKEHOLDERS THAT MAY BE AFFECTED POSITIVELY OR NEGATIVELY BY THE PROPOSED RULES. THE FOLLOWING STAKEHOLDERS HAVE BEEN ADVISED OF AND INVITED TO PROVIDE INPUT ON THE REGULATORY CHANGES PROPOSED IN THIS ISSUE PAPER:**

**\*IT IS ASSUMED THAT ALL NECESSARY INTERNAL PARTIES HAVE BEEN NOTIFIED\*.**

Internal: Discussions have occurred over the past several years within Area 17 and with USFWS regarding regular season and distribution hunts, including improving the permitting process. Hunts have been added and a revised process tested and put in use.

External: N/A

**ALTERNATIVES: (POSSIBLE OUTCOMES or POSSIBLE REGULATIONS):**

1. **\*Preferred Alternative\***: New verbiage to read as follows:

C. Units 80 and 83 – San Luis Valley US Fish and Wildlife Refuge Permits

1. The United States Fish and Wildlife Service (USFWS) allows a maximum of 5 elk hunters to access and hunt on the Alamosa (GMU 83) and Monte Vista (GMU 80) National Wildlife Refuges at any one time. This application and drawing process creates a hunter list for each season identifying the first 5 hunters and the position of the others on the list. As elk are harvested, hunters from the list are given permits to hunt. To be eligible for an access permit, hunters must hold an elk license that is valid for the season and refuge for which they wish to apply. The following seasons are currently open to permitted hunting on each of these refuges:

- a. Archery;
- b. Muzzleloader;
- c. First rifle;
- d. Second rifle;
- e. Third rifle;
- f. Fourth rifle

2. To be entered into the drawing, eligible hunters must email the following address starting the day after left-over license day: [montevista.wildlife@state.co.us](mailto:montevista.wildlife@state.co.us). Hunters will receive an automatic email response with a link to the Refuge Access Permit Application Form. Hunters must provide the following information to apply:

- The hunter’s name, phone number and email address. We will accept email addresses of another so long as we can contact the hunter directly via the phone number provided
- The hunter must have purchased a license that is valid for both the unit and refuge prior to submitting this application
- The hunt code for the license with which they wish to hunt
- The hunter’s customer identification number (CID)

Hunters will need to complete the Application Form and select the correct refuge for which their license is valid in order to be entered.

Applications will be accepted for five days starting the day after left-over license day. Permits for the refuges will be issued via email after a random drawing held under the direct supervision of the area wildlife manager and no later than Aug. 25.

3. The Baca National Wildlife Refuge (GMU 82) is now open to hunters who have purchased a valid regular season public land elk license for GMU 82. Contact the Monte Vista office for refuge-specific rules and information.

<b>Issue Raised by:</b>	<b>Rick Basagoitia, Brian Bechaver, Tyler Cerny, Traci Geringer</b>
<b>Author of the issue paper (if different than person raising the issue):</b>	
<b>CC:</b>	
<b>APPROVED FOR FURTHER CONSIDERATION BY:</b>	<b>Cory Chick</b>
<b>REQUIRES NEW SPACE IN THE BROCHURE?</b>	<input type="checkbox"/> YES <input checked="" type="checkbox"/> NO

<b>ARE ADEQUATE STAFF AND FUNDING RESOURCES AVAILABLE TO IMPLEMENT?</b>	<input checked="" type="checkbox"/> YES <input type="checkbox"/> NO
<b>REGION, BRANCH, OR SECTION LEADING IMPLEMENTATION</b>	SW Region
<b>RECOMMENDED FOR CONSENT AGENDA?</b>	<input checked="" type="checkbox"/> YES <input type="checkbox"/> NO

## ISSUES SUBMITTAL FORM

Date: 10/13/2021

<b>ISSUE:</b>	<b>Should regulation #209.B.1 be modified to create more flexibility in the process and application deadline for the hunting access permit drawing on the James M. John SWA (Unit 140)?</b>
---------------	---

**DISCUSSION (FACTS AND FIGURES, EXPLANATION OF ISSUE):**

The James M. John State Wildlife Area (JMJ) is located in Game Management Unit (GMU) 140, southeast of Trinidad in Las Animas County. Hunting on the JMJ is restricted to big game hunters holding an access permit for one of the four regular rifle elk and deer seasons. Up to twelve big game hunting access permits are allowed for each of the four seasons, and Colorado Parks and Wildlife (CPW) awards access permits through a hand lottery conducted at the CPW office in Pueblo. Access permit applications are available from the Pueblo office, and the application deadline is July 1st annually.

Elk and deer hunting opportunities in GMU 140 include both 1) over-the-counter unlimited bull elk licenses, and 2) limited elk and deer licenses. Hunters obtain limited licenses through the primary or secondary draw or from the leftover license list. CPW posts the results for the primary draw at the end of May, providing hunters who draw limited GMU 140 elk or deer licenses with sufficient time to submit their applications for the access permit by the July 1st deadline. However, results from the secondary drawing are not available until after July 1st (for example, CPW posted results on July 6th in 2021). Leftover licenses go on sale in early August. Therefore, hunters obtaining limited GMU 140 licenses for elk or deer through the secondary drawing or as leftovers cannot apply for the JMJ access permit. Additionally, the current system for administering the hunting access permit drawing is burdensome for staff because the Customer Service Representatives in Pueblo mail out and collect paper applications for the hand lottery.

Here, we propose modifying the language in #209.B.1 to allow more flexibility in the access permit drawing process. Specifically, we propose removing the July 1st deadline and the references to the hand drawing at the Pueblo office. Creating more flexibility would allow CPW to modify the application deadline and drawing process more easily as changes are made to other regulations and new tools become available. For example, CPW uses an online form to collect information from hunters applying for the big game Special Activity Permits on the adjacent Fishers Peak State Park, also located in GMU 140. The link to the online form is posted on CPW's website, and hunters enter their own information into the form, which requires minimal staff time to administer.

Additionally, while reviewing this regulation, we noted it currently states that 12 hunters are allowed *per day*. However, the intention of the access permit was to only allow 12 hunters *per season*. We propose changing the wording from "day" to "season" to correct this language in #209.B.1.

If these proposed changes are adopted, we would inform interested hunters both in the big game brochure and on CPW's website. Additionally, the Customer Service Representatives in Pueblo would be able to email interested parties the link to the application form.

**STATE LAW REQUIRES CPW TO SOLICIT INPUT FROM STAKEHOLDERS THAT MAY BE AFFECTED POSITIVELY OR NEGATIVELY BY THE PROPOSED RULES. THE FOLLOWING STAKEHOLDERS HAVE BEEN ADVISED OF AND INVITED TO PROVIDE INPUT ON THE REGULATORY CHANGES PROPOSED IN THIS ISSUE PAPER:**

**\*IT IS ASSUMED THAT ALL NECESSARY INTERNAL PARTIES HAVE BEEN NOTIFIED\*.**

Stakeholders include hunters holding valid licenses for elk and/or deer in GMU 140. No formal public outreach has occurred pending internal discussions.

<b>ALTERNATIVES: (POSSIBLE OUTCOMES or POSSIBLE REGULATIONS):</b>	
<p>1. <b>*Preferred Alternative*: Modify #209.B.1 to read:</b></p> <p>Hunting access during the regular rifle deer and elk seasons is restricted to big game hunters only and to no more than twelve (12) permitted hunters per day <b>season</b>. Access permits will be issued <b>to successful applicants through a drawing as provided in these regulations</b> from the Division's Pueblo Office through a hand drawing. Permit applications may be obtained from the Division of Parks and Wildlife, 600 Reservoir Road, Pueblo, Colorado 81005 (telephone (719) 561-5300). Group applications will be accepted. No more than two (2) applicants per group. Application deadline is July 1 annually. Successful applicants will be notified by mail. The date, time and location of the drawing will be included on the application.</p> <p>2. Status Quo.</p>	
<b>Issue Raised by:</b>	<b>Travis Black, SE Deputy Regional Manager</b>
<b>Author of the issue paper (if different than person raising the issue):</b>	<b>Julie Stiver, SE Senior Wildlife Biologist</b>
<b>CC:</b>	<b>B. Ackerman, T. Black, M. Martin, Mike Trujillo, A. Friedel</b>
<b>APPROVED FOR FURTHER CONSIDERATION BY:</b>	<b>Brett Ackerman</b>
<b>REQUIRES NEW SPACE IN THE BROCHURE?</b>	<b>YES <input checked="" type="checkbox"/> NO</b>
<b>ARE ADEQUATE STAFF AND FUNDING RESOURCES AVAILABLE TO IMPLEMENT?</b>	<b><input checked="" type="checkbox"/> YES <input type="checkbox"/> NO</b>
<b>REGION, BRANCH, OR SECTION LEADING IMPLEMENTATION</b>	<b>SE Region</b>
<b>RECOMMENDED FOR CONSENT AGENDA?</b>	<b><input checked="" type="checkbox"/> YES <input type="checkbox"/> NO</b>

## ISSUES SUBMITTAL FORM

	Date: 10/13/2021
<b>ISSUE:</b>	<b>Should hunt code EF073P5R be eliminated?</b>
<b>DISCUSSION (FACTS AND FIGURES, EXPLANATION OF ISSUE):</b>	
<p>This hunt code was created when elk populations were at their peak in numbers and increased harvest of cow elk was a management goal. Since that time elk populations have decreased and are currently below management objective, cow elk harvest is no longer a management goal, and agriculture-elk conflicts are no longer a significant issue. Over time the number of licenses have decreased in the hunt code and in 2021 only 10 licenses were available. There is no longer a need to have this hunt code. Any agriculture-elk conflicts will be addressed through dispersal tags to individual properties experiencing conflict.</p>	
<p><b>STATE LAW REQUIRES CPW TO SOLICIT INPUT FROM STAKEHOLDERS THAT MAY BE AFFECTED POSITIVELY OR NEGATIVELY BY THE PROPOSED RULES. THE FOLLOWING STAKEHOLDERS HAVE BEEN ADVISED OF AND INVITED TO PROVIDE INPUT ON THE REGULATORY CHANGES PROPOSED IN THIS ISSUE PAPER:</b></p>	
<p><b>*IT IS ASSUMED THAT ALL NECESSARY INTERNAL PARTIES HAVE BEEN NOTIFIED*.</b></p> <ul style="list-style-type: none"> <li>- elk hunters</li> <li>- private landowners</li> <li>- wildlife managers</li> </ul>	
<b>ALTERNATIVES: (POSSIBLE OUTCOMES or POSSIBLE REGULATIONS):</b>	
<ol style="list-style-type: none"> <li>1. <b>*Preferred Alternative*:</b> eliminate hunt code EF073P5R</li> <li>2. Status Quo</li> </ol>	
<b>Issue Raised by:</b>	<b>Brad Weinmeister, biologist, Andy Brown, DWM</b>
<b>Author of the issue paper (if different than person raising the issue):</b>	<b>Brad Weinmeister</b>
<b>CC:</b>	<b>Jamin Grigg, Adrian Archuleta</b>
<b>APPROVED FOR FURTHER CONSIDERATION BY:</b>	<b>Cory Chick</b>
<b>REQUIRES NEW SPACE IN THE BROCHURE?</b>	<b>YES x NO</b>
<b>ARE ADEQUATE STAFF AND FUNDING RESOURCES AVAILABLE TO IMPLEMENT?</b>	<b>X YES <input type="checkbox"/> NO</b>
<b>REGION, BRANCH, OR SECTION LEADING IMPLEMENTATION</b>	<b>Terrestrial</b>
<b>RECOMMENDED FOR CONSENT AGENDA?</b>	<b>X YES <input type="checkbox"/> NO</b>

## ISSUES SUBMITTAL FORM

	Date: 10/13/2021
<b>ISSUE:</b>	<b>Should hunt code EF077P5R be eliminated?</b>
<b>DISCUSSION (FACTS AND FIGURES, EXPLANATION OF ISSUE):</b>	
<p>This hunt code was created when elk populations were at their peak in numbers and increased harvest of cow elk was a management goal. Since that time, elk populations have decreased and are currently below management objective, cow elk harvest is no longer a management goal, and agriculture-elk conflicts are no longer a significant issue. Over time the number of licenses have decreased in the hunt code and in 2021 only 20 licenses were available. There is no longer a need to have this hunt code. Any agriculture-elk conflicts will be addressed through dispersal tags to individual properties experiencing conflict.</p>	
<p><b>STATE LAW REQUIRES CPW TO SOLICIT INPUT FROM STAKEHOLDERS THAT MAY BE AFFECTED POSITIVELY OR NEGATIVELY BY THE PROPOSED RULES. THE FOLLOWING STAKEHOLDERS HAVE BEEN ADVISED OF AND INVITED TO PROVIDE INPUT ON THE REGULATORY CHANGES PROPOSED IN THIS ISSUE PAPER:</b></p>	
<p><b>*IT IS ASSUMED THAT ALL NECESSARY INTERNAL PARTIES HAVE BEEN NOTIFIED*.</b></p> <ul style="list-style-type: none"> <li>- elk hunters</li> <li>- private landowners</li> <li>- wildlife managers</li> </ul>	
<b>ALTERNATIVES: (POSSIBLE OUTCOMES or POSSIBLE REGULATIONS):</b>	
<ol style="list-style-type: none"> <li>1. <b>*Preferred Alternative*:</b> eliminate hunt code EF077P5R</li> <li>2. Status Quo</li> </ol>	
<b>Issue Raised by:</b>	Brad Weinmeister, Biologist, Doug Purcell, DWM, Nate Martinez, DWM
<b>Author of the issue paper (if different than person raising the issue):</b>	Brad Weinmeister
<b>CC:</b>	Jamin Grigg, Adrian Archuleta
<b>APPROVED FOR FURTHER CONSIDERATION BY:</b>	Cory Chick
<b>REQUIRES NEW SPACE IN THE BROCHURE?</b>	YES <input checked="" type="checkbox"/> NO
<b>ARE ADEQUATE STAFF AND FUNDING RESOURCES AVAILABLE TO IMPLEMENT?</b>	<input checked="" type="checkbox"/> YES <input type="checkbox"/> NO
<b>REGION, BRANCH, OR SECTION LEADING IMPLEMENTATION</b>	Terrestrial
<b>RECOMMENDED FOR CONSENT AGENDA?</b>	<input checked="" type="checkbox"/> YES <input type="checkbox"/> NO

### ISSUES SUBMITTAL FORM

Date:		10/13/2021
<b>ISSUE:</b>	<b>Should hunt code EM741O4R be eliminated?</b>	
<b>DISCUSSION (FACTS AND FIGURES, EXPLANATION OF ISSUE):</b>		
Currently, antlered elk licenses for GMU 741 for the 4th rifle season are available in two hunt codes, E-M-074-04-R and E-M-741-04-R. In order to simplify hunt codes and decrease the number of hunt codes, it is proposed to eliminate E-M-741-04-R and use the 074 hunt code to make these licenses available in both GMUs.		
<b>STATE LAW REQUIRES CPW TO SOLICIT INPUT FROM STAKEHOLDERS THAT MAY BE AFFECTED POSITIVELY OR NEGATIVELY BY THE PROPOSED RULES. THE FOLLOWING STAKEHOLDERS HAVE BEEN ADVISED OF AND INVITED TO PROVIDE INPUT ON THE REGULATORY CHANGES PROPOSED IN THIS ISSUE PAPER:</b>		
*IT IS ASSUMED THAT ALL NECESSARY INTERNAL PARTIES HAVE BEEN NOTIFIED*.		
GMU 74 and 741 elk hunters		
<b>ALTERNATIVES: (POSSIBLE OUTCOMES or POSSIBLE REGULATIONS):</b>		
<ol style="list-style-type: none"> <li>1. <b>*Preferred Alternative*:</b> eliminate hunt code E-M-741-04-R</li> <li>2. Status Quo</li> <li>3. Change E-M-074-04-R so that licenses are valid only in GMU 74 and have E-M-741-04-R valid only in GMU 741</li> </ol>		
<b>Issue Raised by:</b>	Brad Weinmeister, Biologist, Stephanie Taylor, DWM, Steve McClung, AAWM	
<b>Author of the issue paper (if different than person raising the issue):</b>	Brad Weinmeister	
<b>CC:</b>	Jamin Grigg, Adrian Archuleta	
<b>APPROVED FOR FURTHER CONSIDERATION BY:</b>		Cory Chick
<b>REQUIRES NEW SPACE IN THE BROCHURE?</b>		YES <input checked="" type="checkbox"/> NO
<b>ARE ADEQUATE STAFF AND FUNDING RESOURCES AVAILABLE TO IMPLEMENT?</b>		<input checked="" type="checkbox"/> YES <input type="checkbox"/> NO
<b>REGION, BRANCH, OR SECTION LEADING IMPLEMENTATION</b>		Terrestrial
<b>RECOMMENDED FOR CONSENT AGENDA?</b>		<input checked="" type="checkbox"/> YES <input type="checkbox"/> NO



## ISSUES SUBMITTAL FORM

Date: 10/13/2021

**ISSUE:** Should the hunt code structure be modified for muzzleloader season in DAU PH-30 to be in accordance with the current structure for archery and rifle seasons?

### DISCUSSION (FACTS AND FIGURES, EXPLANATION OF ISSUE):

The South Park pronghorn herd (Data Analysis Unit (DAU) PH-30) includes Game Management Units (GMUs) 49, 50, 57, 58, 500, 501, 511 (currently, not hunted), & 581 (Figure 1). At present, hunt codes exist to separate huntable units into two groups for archery and rifle: AM(F)049, which includes GMUs 49, 50, 500, and 501; and AM(F)057, which includes GMUs 57, 58, and 581 (Figure 2). In contrast, all GMUs are grouped into one hunt code for muzzleloader season (Figure 3).

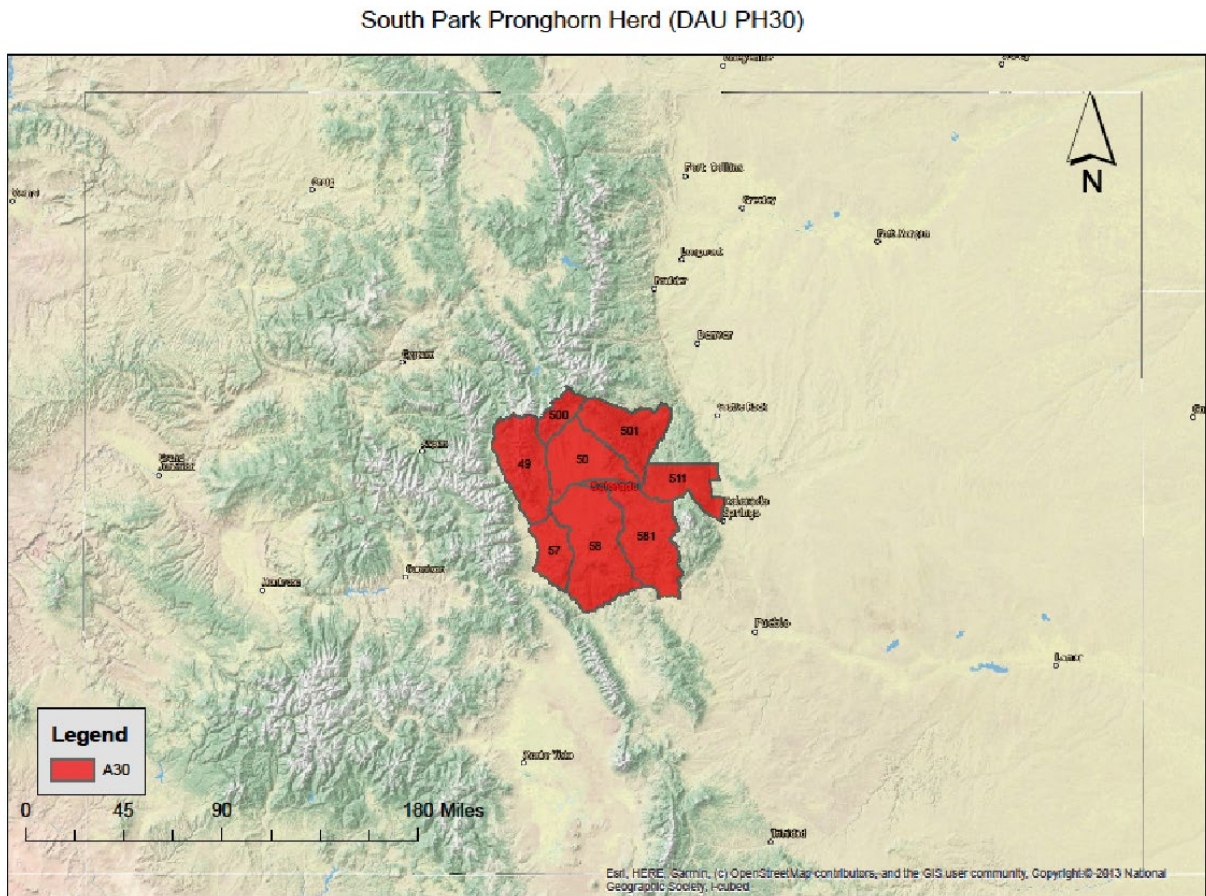


Figure 1. The South Park pronghorn herd is located in central Colorado and includes GMUs 49, 50, 57, 58, 500, 501, 511, and 581.

Current Hunttable GMUs Under Two Huntcodes for Archery and Rifle in PH30

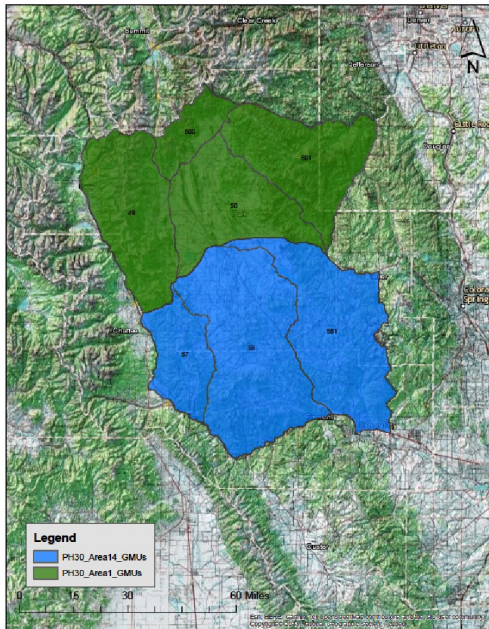


Figure 2. Current GMUs included in archery and rifle hunt codes for PH-30 and proposed hunt code structure change for muzzleloader season.

Current Hunttable GMUs Under a Single Huntcode for Muzzleloader in PH30

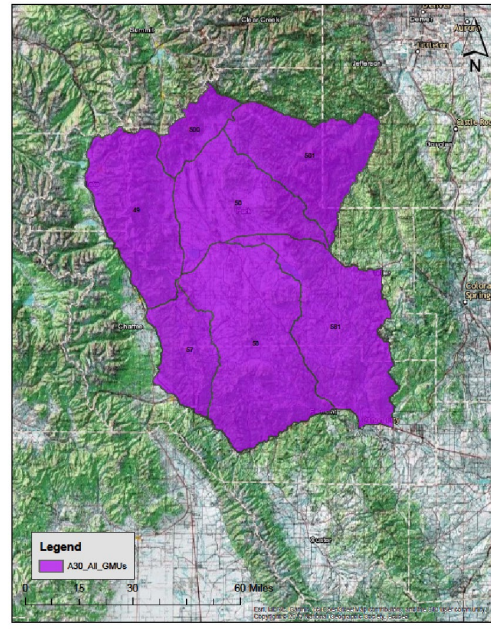


Figure 3. Current GMUs included in muzzleloader hunt codes for PH-30.

Having inconsistent hunttable GMUs per hunt code between archery, rifle, and muzzleloader seasons is a potential source of confusion for hunters. Therefore, we propose modifying the muzzleloader hunt codes to mirror the GMU groupings of archery and rifle seasons by separating the single hunt code into two. This will reduce the potential for hunter confusion, allow CPW staff to adjust license allocation on a finer scale, and better spread hunter pressure between the GMUs. This change will likely allow for increased hunter opportunity while at the same time reducing crowding issues through more targeted license allocation between the new hunt code groupings.

**STATE LAW REQUIRES CPW TO SOLICIT INPUT FROM STAKEHOLDERS THAT MAY BE AFFECTED POSITIVELY OR NEGATIVELY BY THE PROPOSED RULES. THE FOLLOWING STAKEHOLDERS HAVE BEEN ADVISED OF AND INVITED TO PROVIDE INPUT ON THE REGULATORY CHANGES PROPOSED IN THIS ISSUE PAPER:**

**\*IT IS ASSUMED THAT ALL NECESSARY INTERNAL PARTIES HAVE BEEN NOTIFIED\*.**

Pronghorn muzzleloader hunters in PH-30. Outreach efforts did not occur regarding this issue, as this requested action is relatively minor.

**ALTERNATIVES: (POSSIBLE OUTCOMES or POSSIBLE REGULATIONS):**

1. **\*Preferred Alternative\*:** Modify the muzzleloader hunt code structure so that hunt codes include the same hunttable GMUs as rifle and archery.
2. Status Quo

**Issue Raised by:**

**Kirstie Yeager-Wildlife Biologist, Ian Petkash-DWM, Tyler Stoltzfus-DWM, and Bob Carochi-DWM**

**Author of the issue paper (if different than person raising the issue):**

**Kirstie Yeager**

<b>CC:</b>	<b>Areas 1, 13, &amp; 14, Woodward, Lamont, Lamb, Kroening, Wigner, Carpenter, Stiver</b>
<b>APPROVED FOR FURTHER CONSIDERATION BY:</b>	<b>Terrestrial, NE Region</b>
<b>REQUIRES NEW SPACE IN THE BROCHURE?</b>	<b>X YES <input type="checkbox"/> NO</b>
<b>ARE ADEQUATE STAFF AND FUNDING RESOURCES AVAILABLE TO IMPLEMENT?</b>	<b>X YES <input type="checkbox"/> NO</b>
<b>REGION, BRANCH, OR SECTION LEADING IMPLEMENTATION</b>	<b>Terrestrial &amp; Area 1</b>
<b>RECOMMENDED FOR CONSENT AGENDA?</b>	<b>X YES <input type="checkbox"/> NO</b>